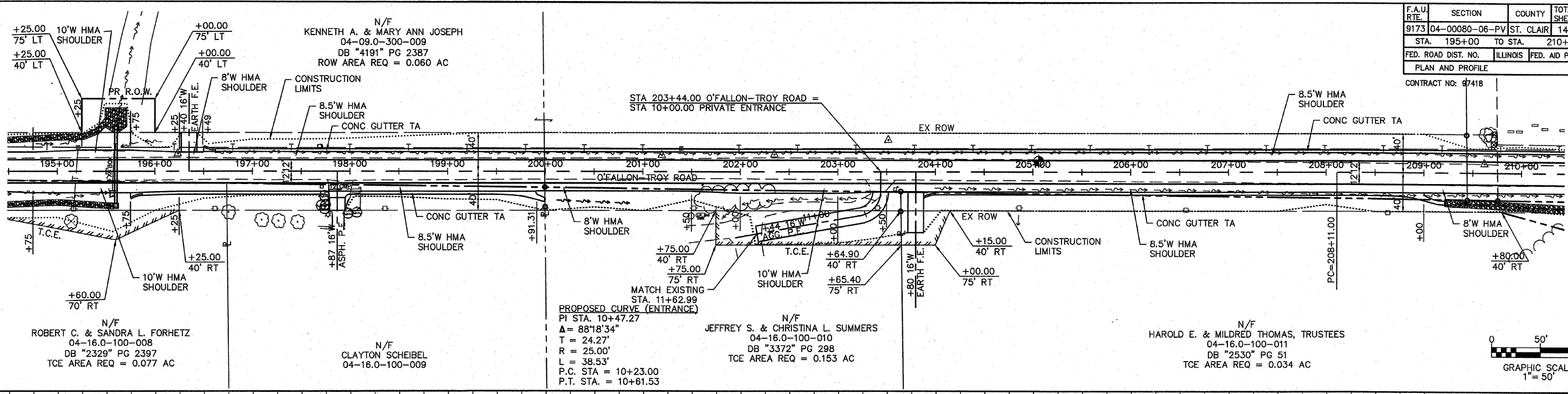


| F.A.U. RTE. | SECTION | COUNTY | TOTAL SHEETS | SHEET NO. |
|----------------------------|----------------|------------------|--------------|-----------|
| 9173 | 04-00080-06-PV | ST. CLAIR | 144 | 23 |
| STA. 195+00 TO STA. 210+00 | | | | |
| FED. ROAD DIST. NO. | ILLINOIS | FED. AID PROJECT | | |
| | | | | |

CONTRACT NO: 97418

| BY | DATE |
|----|------|
| | |
| | |
| | |
| | |

| ORIGINAL SURVEY PLOTTED | DATE |
|-------------------------|------|
| | |
| | |
| | |
| | |



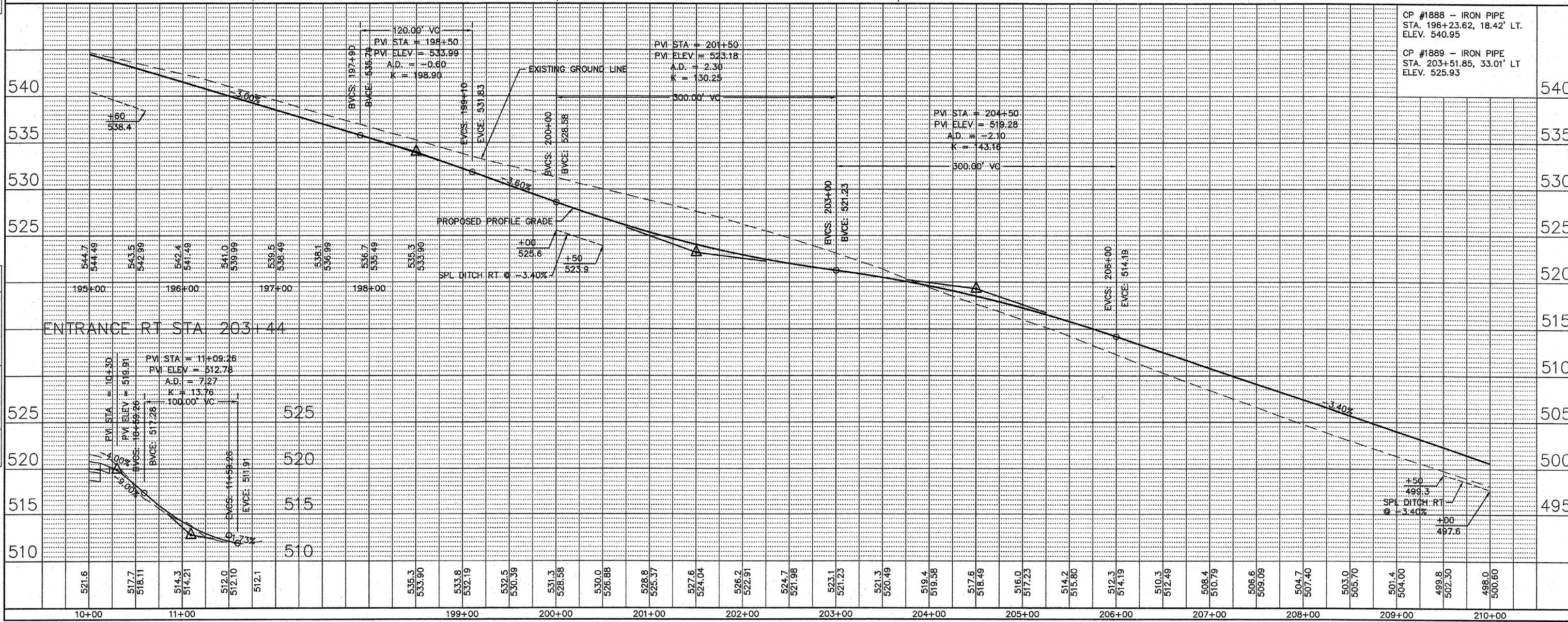
N/F
ROBERT C. & SANDRA L. FORHETZ
04-16.0-100-008
DB "2329" PG 2397
TCE AREA REQ = 0.077 AC

N/F
CLAYTON SCHEIBEL
04-16.0-100-009

PROPOSED CURVE (ENTRANCE)
PI STA. 10+47.27
Δ = 88°18'34"
T = 24.27'
R = 25.00'
L = 38.53'
P.C. STA = 10+23.00
P.T. STA. = 10+61.53

N/F
JEFFREY S. & CHRISTINA L. SUMMERS
04-16.0-100-010
DB "3372" PG 298
TCE AREA REQ = 0.153 AC

N/F
HAROLD E. & MILDRED THOMAS, TRUSTEES
04-16.0-100-011
DB "2530" PG 51
TCE AREA REQ = 0.034 AC



CP #1888 - IRON PIPE
STA. 196+23.62, 18.42' LT.
ELEV. 540.95

CP #1889 - IRON PIPE
STA. 203+51.85, 33.01' LT.
ELEV. 525.93