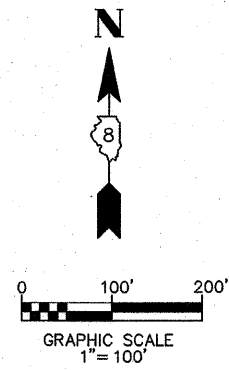
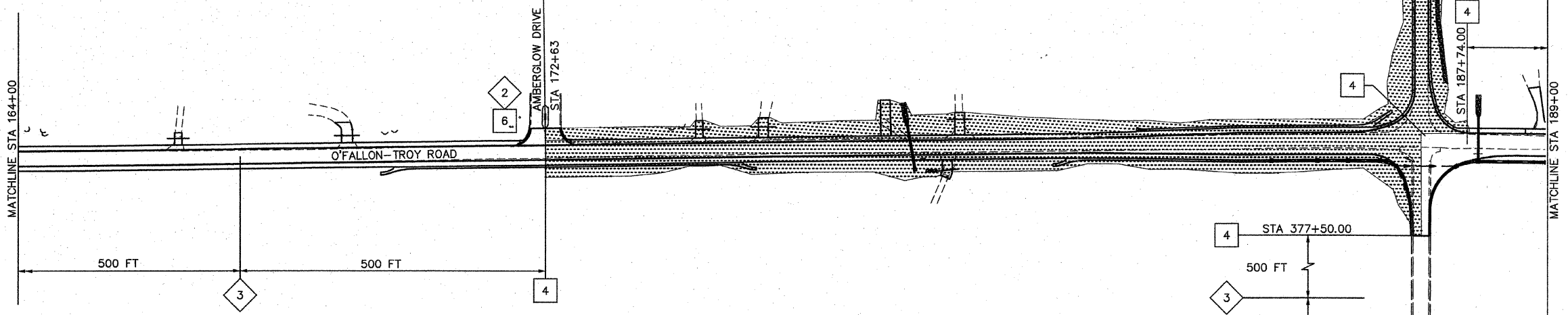
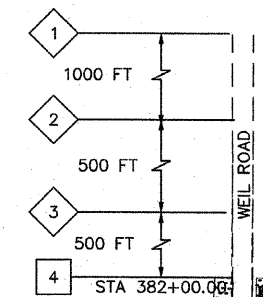
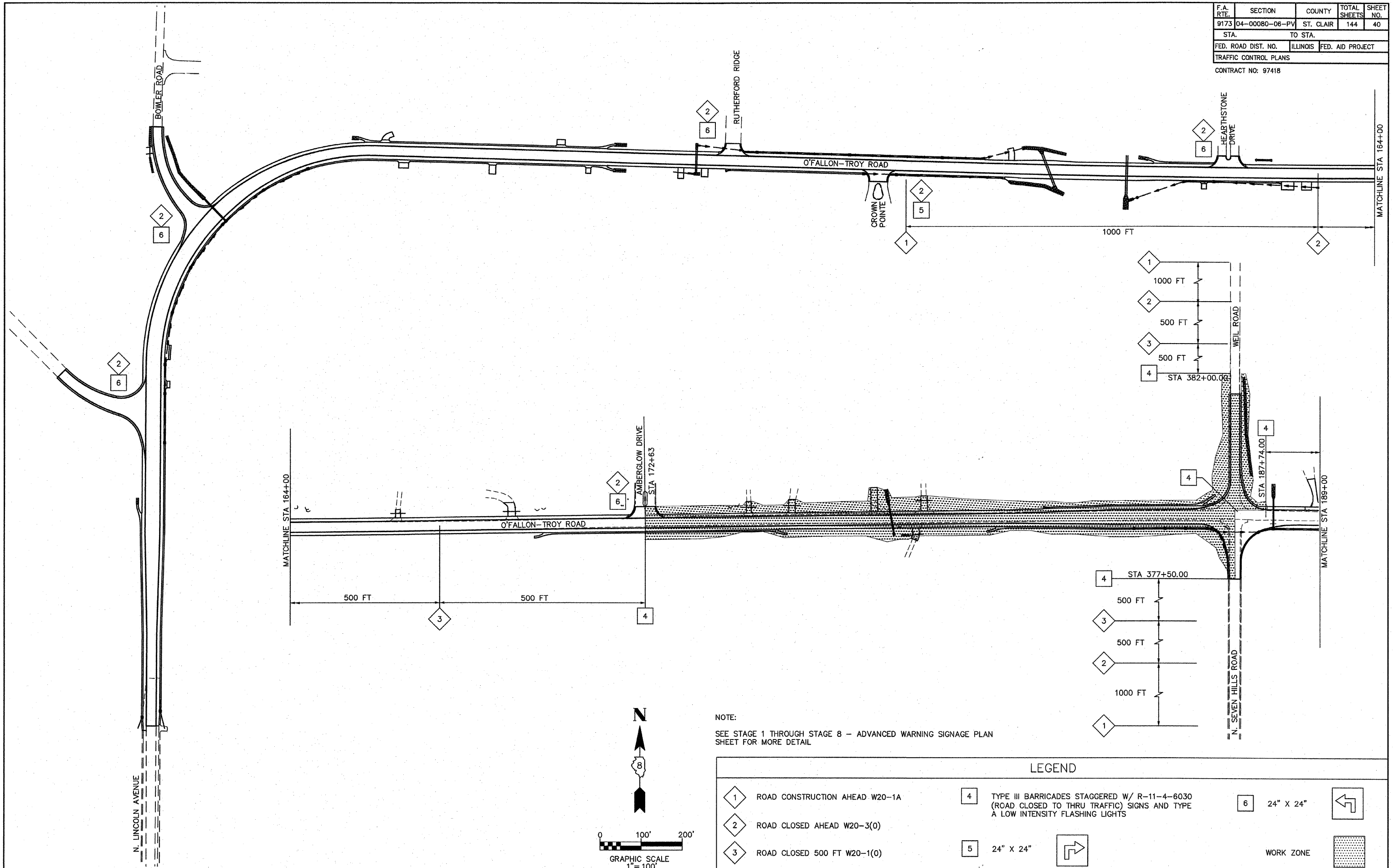

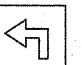


F.A. RTE.	SECTION	COUNTY	TOTAL SHEETS	SHEET NO.
9173	04-00080-06-PV	ST. CLAIR	144	40
STA.		TO STA.		
FED. ROAD DIST. NO.	ILLINOIS	FED. AID PROJECT		
TRAFFIC CONTROL PLANS				
CONTRACT NO: 97418				



NOTE:  
SEE STAGE 1 THROUGH STAGE 8 - ADVANCED WARNING SIGNAGE PLAN SHEET FOR MORE DETAIL

LEGEND			
1	ROAD CONSTRUCTION AHEAD W20-1A	4	TYPE III BARRICADES STAGGERED W/ R-11-4-6030 (ROAD CLOSED TO THRU TRAFFIC) SIGNS AND TYPE A LOW INTENSITY FLASHING LIGHTS
2	ROAD CLOSED AHEAD W20-3(0)	5	24" X 24" 
3	ROAD CLOSED 500 FT W20-1(0)	6	24" X 24" 
			WORK ZONE 