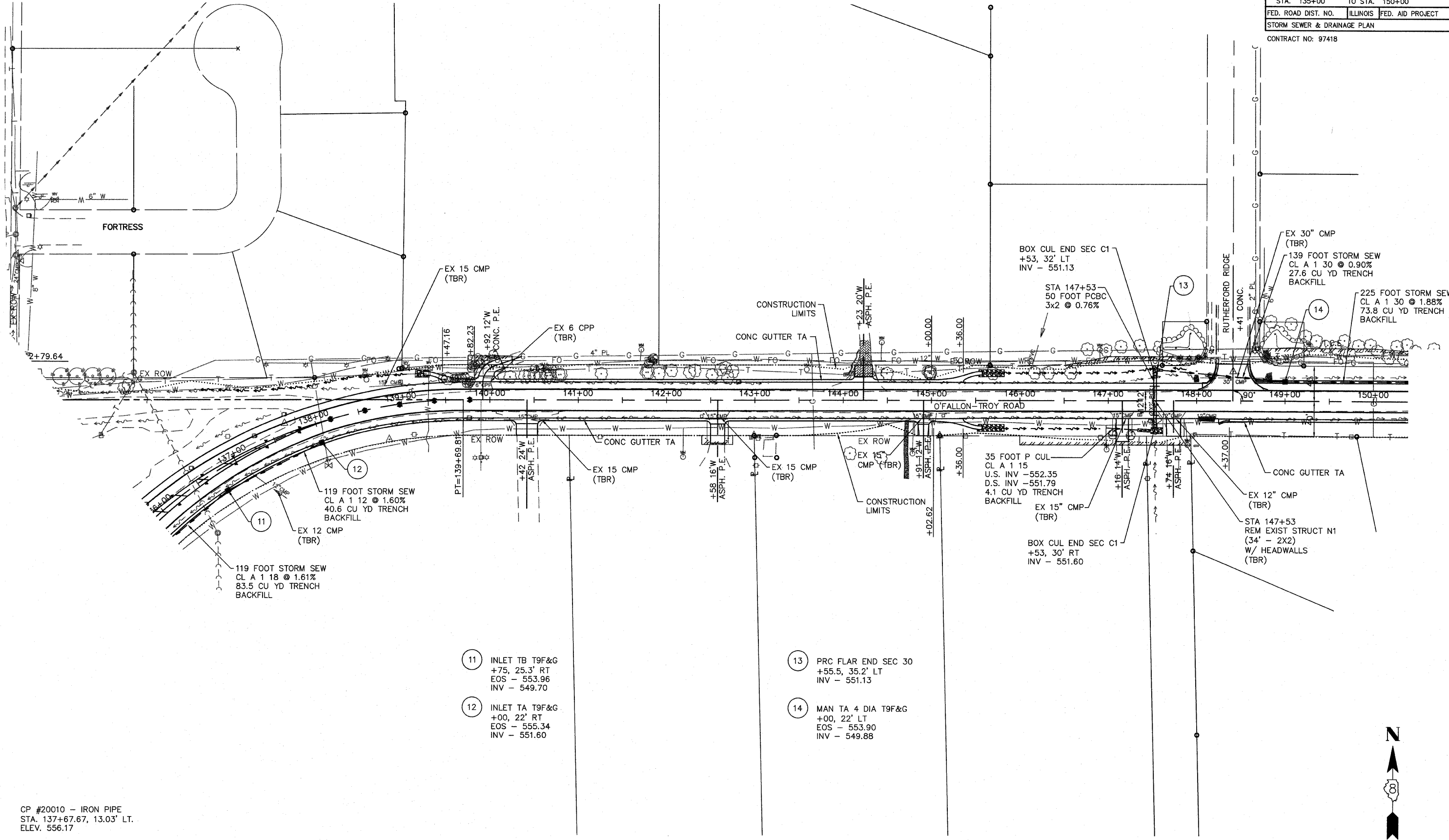


F.A. RTE.	SECTION	COUNTY	TOTAL SHEETS	SHEET NO.
9173	04-00080-06-PV	ST. CLAIR	144	52
STA. 135+00		TO STA. 150+00		
FED. ROAD DIST. NO.		ILLINOIS	FED. AID PROJECT	
STORM SEWER & DRAINAGE PLAN				

CONTRACT NO: 97418



119 FOOT STORM SEW  
CL A 1 12 @ 1.60%  
40.6 CU YD TRENCH  
BACKFILL

EX 12 CMP  
(TBR)

119 FOOT STORM SEW  
CL A 1 18 @ 1.61%  
83.5 CU YD TRENCH  
BACKFILL

- 11 INLET TB T9F&G  
+75, 25.3' RT  
EOS - 553.96  
INV - 549.70
- 12 INLET TA T9F&G  
+00, 22' RT  
EOS - 555.34  
INV - 551.60

- 13 PRC FLAR END SEC 30  
+55.5, 35.2' LT  
INV - 551.13
- 14 MAN TA 4 DIA T9F&G  
+00, 22' LT  
EOS - 553.90  
INV - 549.88

BOX CUL END SEC C1  
+53, 32' LT  
INV - 551.13

STA 147+53  
50 FOOT PCBC  
3x2 @ 0.76%

EX 30" CMP  
(TBR)

139 FOOT STORM SEW  
CL A 1 30 @ 0.90%  
27.6 CU YD TRENCH  
BACKFILL

225 FOOT STORM SEW  
CL A 1 30 @ 1.88%  
73.8 CU YD TRENCH  
BACKFILL

35 FOOT P CUL  
CL A 1 15  
U.S. INV - 552.35  
D.S. INV - 551.79  
4.1 CU YD TRENCH  
BACKFILL

EX 15" CMP  
(TBR)

BOX CUL END SEC C1  
+53, 30' RT  
INV - 551.60

EX 12" CMP  
(TBR)

STA 147+53  
REM EXIST STRUCT N1  
(34' - 2X2)  
W/ HEADWALLS  
(TBR)

CP #20010 - IRON PIPE  
STA. 137+67.67, 13.03' LT.  
ELEV. 556.17

CP #1407 - IRON PIPE  
STA. 142+99.46, 39.97' RT  
ELEV. 561.42

