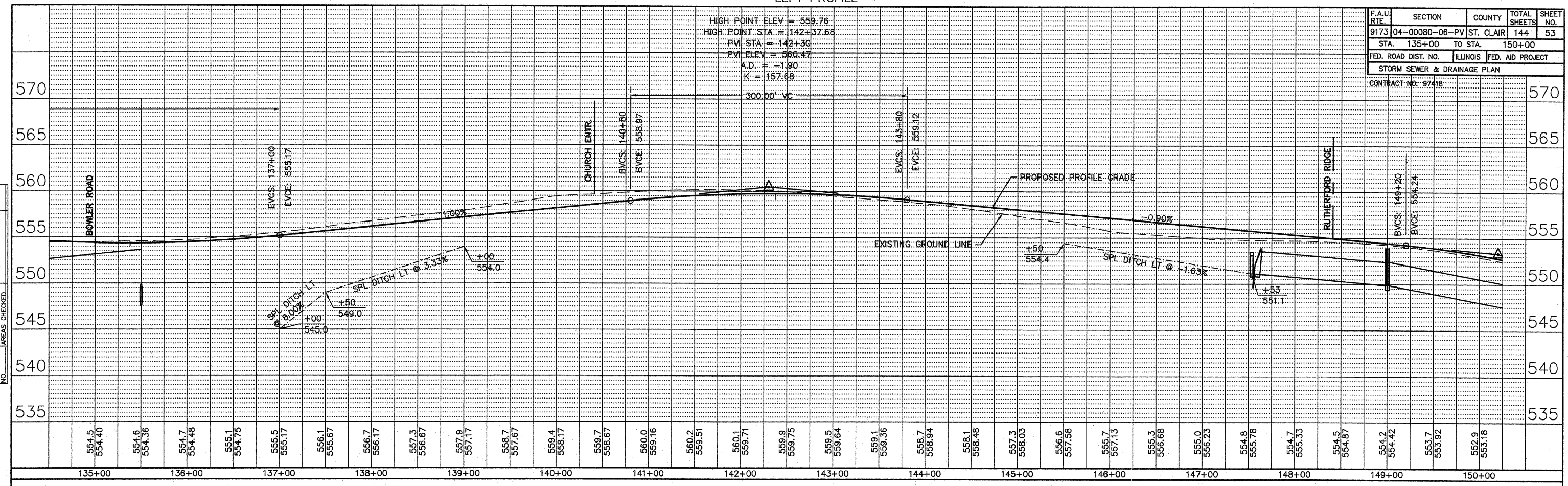


LEFT PROFILE

HIGH POINT ELEV = 559.76
 HIGH POINT STA = 142+37.68
 PVI STA = 142+30
 PVI ELEV = 560.47
 A.D. = -1.90
 K = 157.68

F.A.U. RTE.	SECTION	COUNTY	TOTAL SHEETS	SHEET NO.
9173	04-00080-06-PV	ST. CLAIR	144	53
STA. 135+00		TO STA. 150+00		
FED. ROAD DIST. NO.		ILLINOIS	FED. AID PROJECT	
STORM SEWER & DRAINAGE PLAN				
CONTRACT NO. 97418				

BY	DATE



RIGHT PROFILE

HIGH POINT ELEV = 559.76
 HIGH POINT STA = 142+37.68
 PVI STA = 142+30
 PVI ELEV = 560.47
 A.D. = -1.90
 K = 157.68

BY	DATE

