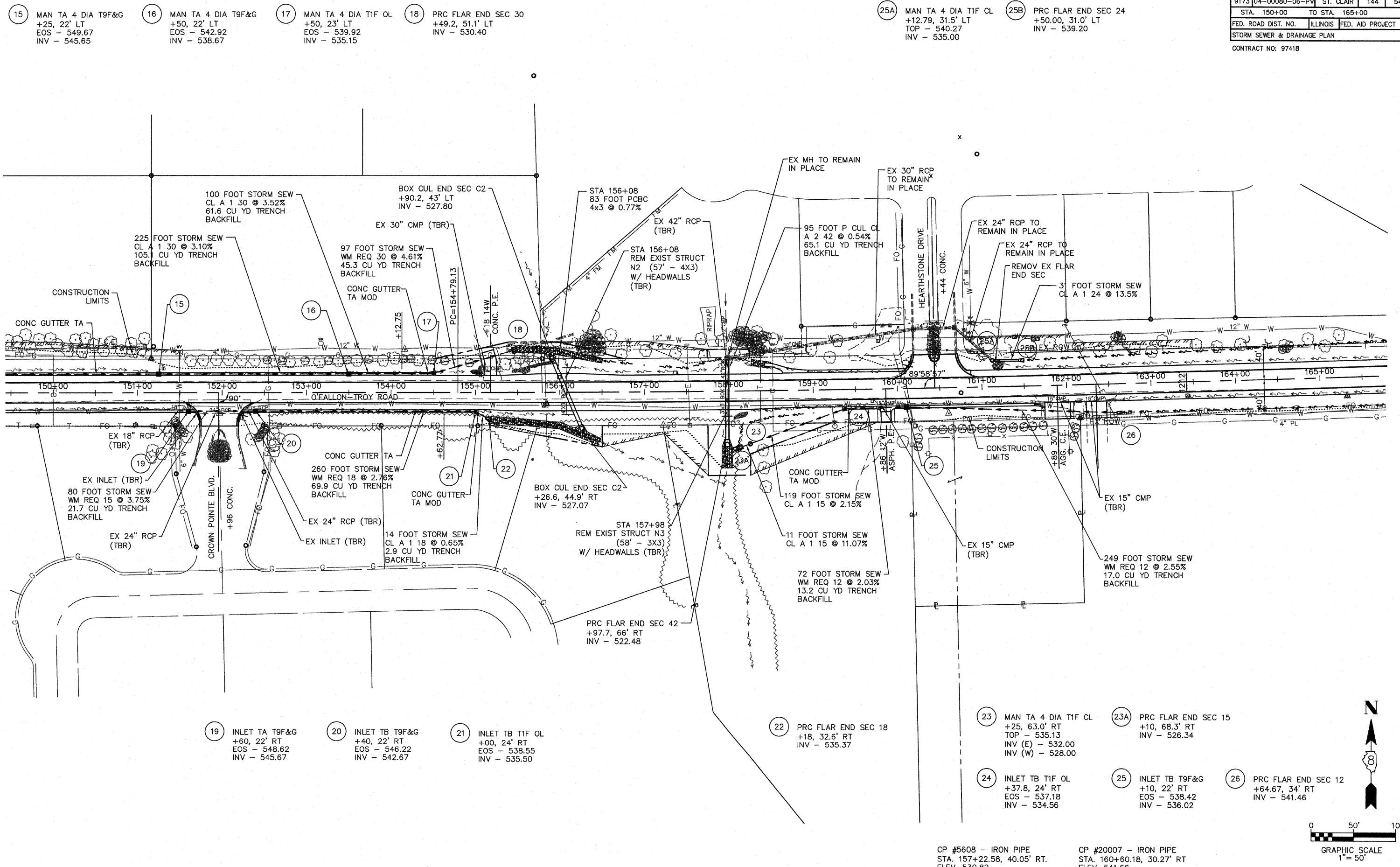


F.A. RTE.	SECTION	COUNTY	TOTAL SHEETS	SHEET NO.
9173	04-00080-06-PV	ST. CLAIR	144	54
STA. 150+00		TO STA. 165+00		
FED. ROAD DIST. NO.		ILLINOIS	FED. AID PROJECT	
STORM SEWER & DRAINAGE PLAN				
CONTRACT NO: 97418				



- 15 MAN TA 4 DIA T9F&G
+25, 22' LT
EOS - 549.67
INV - 545.65
- 16 MAN TA 4 DIA T9F&G
+50, 22' LT
EOS - 542.92
INV - 538.67
- 17 MAN TA 4 DIA T1F OL
+50, 23' LT
EOS - 539.92
INV - 535.15
- 18 PRC FLAR END SEC 30
+49.2, 51.1' LT
INV - 530.40

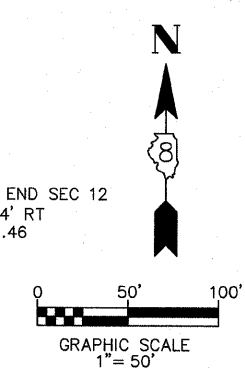
- 25A MAN TA 4 DIA T1F CL
+12.79, 31.5' LT
TOP - 540.27
INV - 535.00
- 25B PRC FLAR END SEC 24
+50.00, 31.0' LT
INV - 539.20

- 19 INLET TA T9F&G
+60, 22' RT
EOS - 548.62
INV - 545.67
- 20 INLET TB T9F&G
+40, 22' RT
EOS - 546.22
INV - 542.67
- 21 INLET TB T1F OL
+00, 24' RT
EOS - 538.55
INV - 535.50

- 22 PRC FLAR END SEC 18
+18, 32.6' RT
INV - 535.37
- 23 MAN TA 4 DIA T1F CL
+25, 63.0' RT
TOP - 535.13
INV (E) - 532.00
INV (W) - 528.00
- 24 INLET TB T1F OL
+37.8, 24' RT
EOS - 537.18
INV - 534.56
- 25 INLET TB T9F&G
+10, 22' RT
EOS - 538.42
INV - 536.02
- 26 PRC FLAR END SEC 12
+64.67, 34' RT
INV - 541.46

CP #5608 - IRON PIPE
STA. 157+22.58, 40.05' RT.
ELEV. 530.82

CP #20007 - IRON PIPE
STA. 160+60.18, 30.27' RT
ELEV. 541.66



O'FALLON-TROY ROAD STORM SEWER & DRAINAGE PLAN