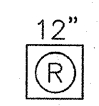
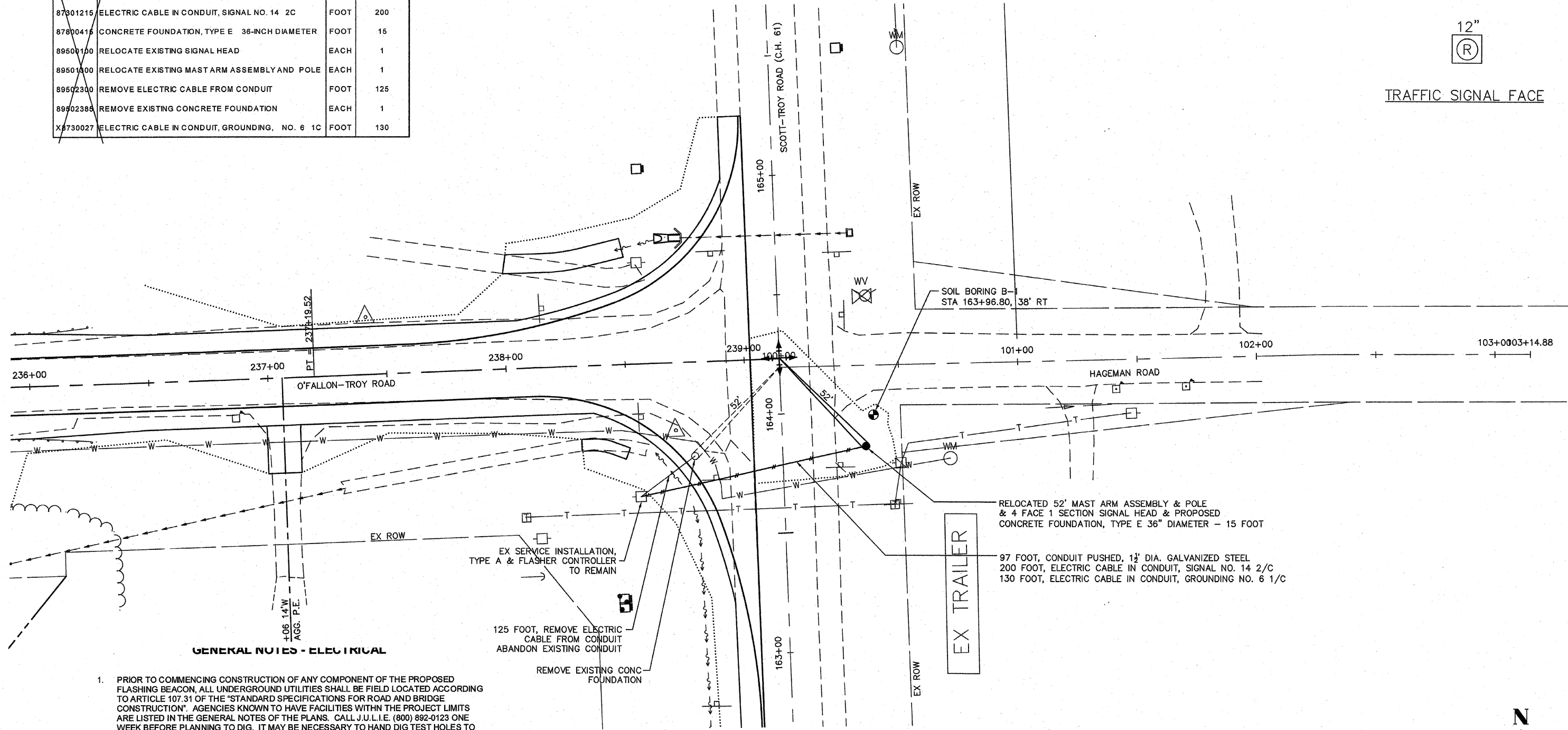


F.A. RTE.	SECTION	COUNTY	TOTAL SHEETS	SHEET NO.
9173	04-00080-06-PV	ST. CLAIR	144	85
STA.		TO STA.		
FED. ROAD DIST. NO.		ILLINOIS FED. AID PROJECT		
FLASHING BEACON RELOCATION PLAN				
CONTRACT NO: _____				



TRAFFIC SIGNAL FACE

SCHEDULE OF QUANTITIES				
CODE NO.	ITEM	UNIT	TOTAL QUANTITIES	
81018400	CONDUIT PUSHED, 1 1/2" DIA., GALVANIZED STEEL	FOOT	97	
87801215	ELECTRIC CABLE IN CONDUIT, SIGNAL NO. 14 2/C	FOOT	200	
87800415	CONCRETE FOUNDATION, TYPE E 36-INCH DIAMETER	FOOT	15	
89500100	RELOCATE EXISTING SIGNAL HEAD	EACH	1	
89501000	RELOCATE EXISTING MAST ARM ASSEMBLY AND POLE	EACH	1	
89502300	REMOVE ELECTRIC CABLE FROM CONDUIT	FOOT	125	
89502385	REMOVE EXISTING CONCRETE FOUNDATION	EACH	1	
X8730027	ELECTRIC CABLE IN CONDUIT, GROUNDING, NO. 6 1/C	FOOT	130	



GENERAL NOTES - ELECTRICAL

- PRIOR TO COMMENCING CONSTRUCTION OF ANY COMPONENT OF THE PROPOSED FLASHING BEACON, ALL UNDERGROUND UTILITIES SHALL BE FIELD LOCATED ACCORDING TO ARTICLE 107.31 OF THE "STANDARD SPECIFICATIONS FOR ROAD AND BRIDGE CONSTRUCTION". AGENCIES KNOWN TO HAVE FACILITIES WITHIN THE PROJECT LIMITS ARE LISTED IN THE GENERAL NOTES OF THE PLANS. CALL J.U.L.I.E. (800) 892-0123 ONE WEEK BEFORE PLANNING TO DIG. IT MAY BE NECESSARY TO HAND DIG TEST HOLES TO EXPOSE EXISTING UTILITIES AT SOME LOCATIONS.
- TRAFFIC SIGNAL CABLES SHALL BE #14 AWG STRANDED COPPER UNLESS OTHERWISE SPECIFIED. TERMINAL ENDS SHALL HAVE CRIMPED-ON RING TOUNGE CONNECTORS.
- THE LOCATION OF MAST ARM SUPPORTS SHALL BE APPROVED BY THE ENGINEER BEFORE FOUNDATIONS ARE CONSTRUCTED. MAST ARM POLES SHALL BE LOCATED A MINIMUM OF 10 FEET FROM THE EDGE OF PAVEMENT OR 2 FEET FROM THE EDGE OF SHOULDER, WHICHEVER DISTANCE IS GREATER. THESE DISTANCES ARE TO THE NEAR FACE OF THE MAST ARM POLE.
- THE FOLLOWING DEPTHS OF CONCRETE FOUNDATIONS FOR MAST ARM POLES HAVE BEEN DETERMINED FROM SOIL BORING DATA:
SE CORNER: 15' 0"
- A 1/4" DIAMETER NYLON PULL ROPE SHALL BE INSTALLED IN ALL NEW CONDUITS.

