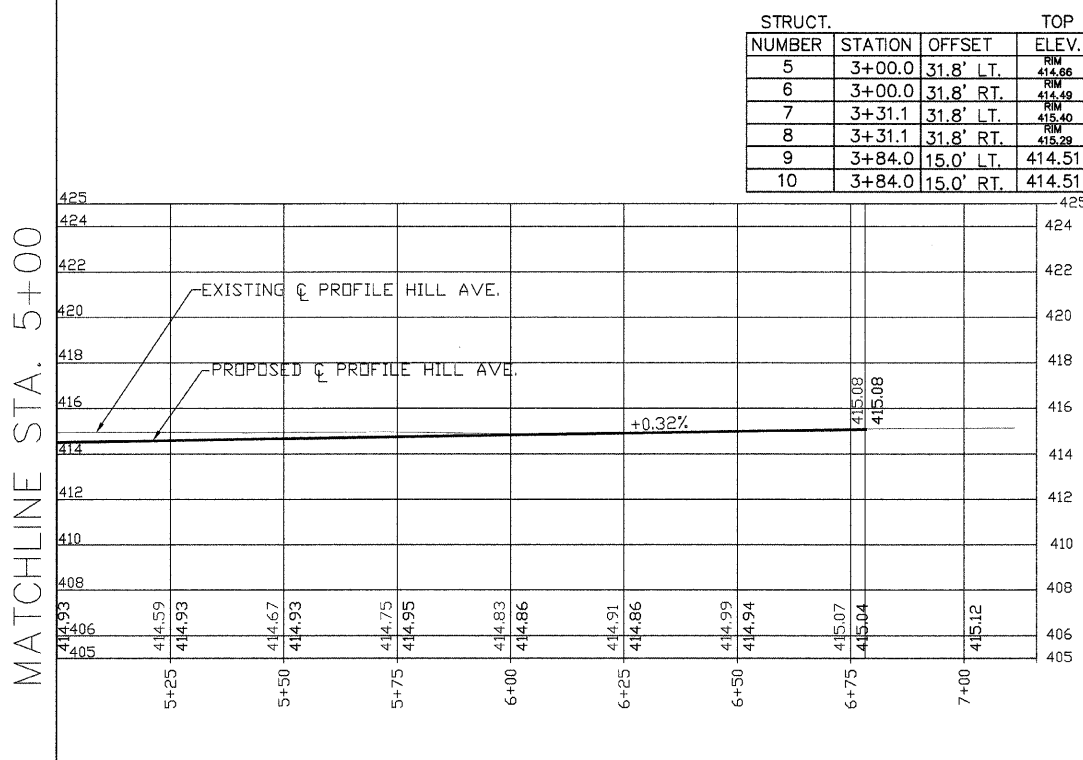
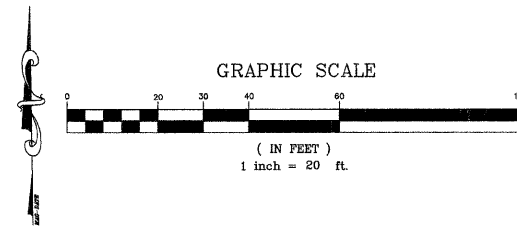
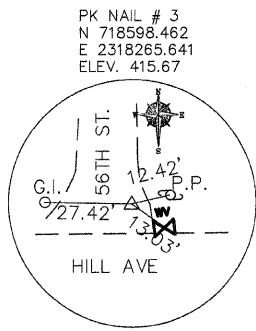
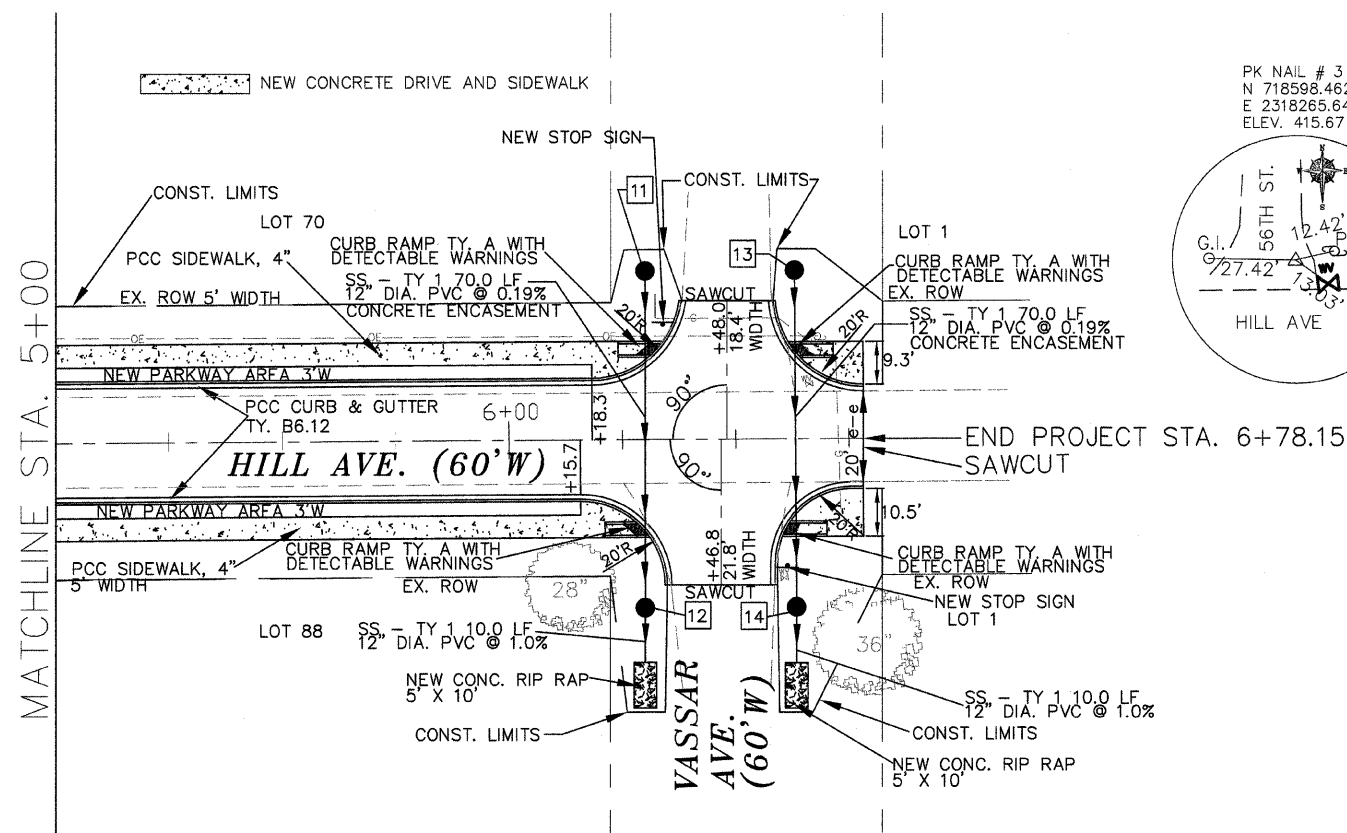
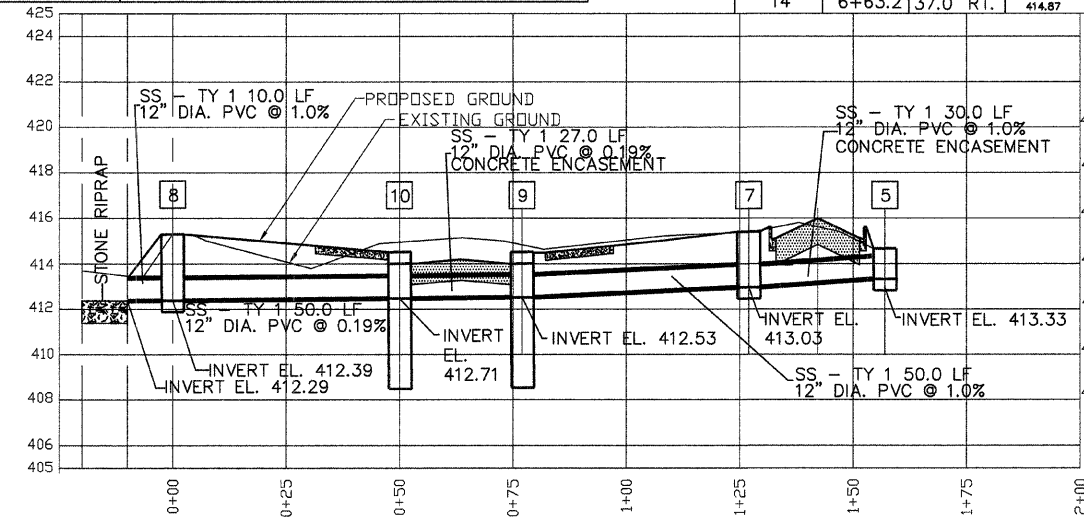


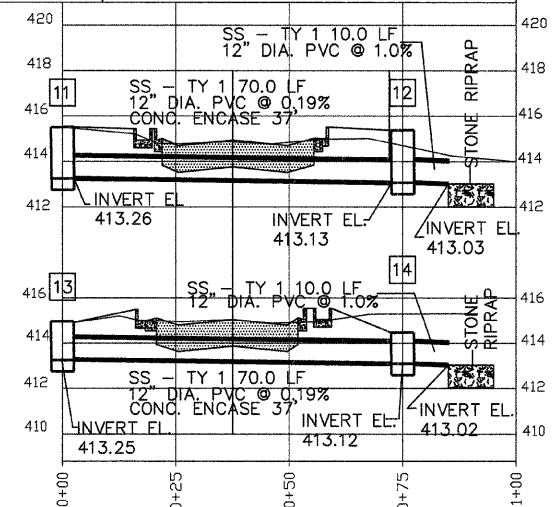
F.A.U. RTE.	SECTION	COUNTY	TOTAL SHEETS	SHEET NO.
9238	09-00022-00-PV	ST. CLAIR	12	5
		ILLINOIS	CONTRACT NO. 97412	



STRUCT. NUMBER	STATION	OFFSET	TOP ELEV.	INVERT ELEV.	STRUCTURE TYPE
5	3+00.0	31.8' LT.	414.66	413.33	INLET TYPE A 4' DIA WITH TYPE 8 FRAME
6	3+00.0	31.8' RT.	414.49	413.16	INLET TYPE A 4' DIA WITH TYPE 8 FRAME
7	3+31.1	31.8' LT.	415.40	413.03	INLET TYPE A 4' DIA WITH TYPE 8 FRAME
8	3+31.1	31.8' RT.	415.28	412.39	INLET TYPE A 4' DIA WITH TYPE 8 FRAME
9	3+84.0	15.0' LT.	414.51	412.53	CATCH BASIN TYPE A 4' DIA SPECIAL FR AND LI
10	3+84.0	15.0' RT.	414.51	412.48	CATCH BASIN TYPE A 4' DIA SPECIAL FR AND LI



STRUCT. NUMBER	STATION	OFFSET	TOP ELEV.	INVERT ELEV.	STRUCTURE TYPE
11	6+30.0	37.0' LT.	415.50	413.26	INLET TYPE A 4' DIA WITH TYPE 8 FRAME
12	6+30.0	37.0' RT.	415.37	414.04	INLET TYPE A 4' DIA WITH TYPE 8 FRAME
13	6+63.2	37.0' LT.	415.00	413.25	INLET TYPE A 4' DIA WITH TYPE 8 FRAME
14	6+63.2	37.0' RT.	414.87	413.12	INLET TYPE A 4' DIA WITH TYPE 8 FRAME



Designed: VILLAGE OF WASHINGTON PARK STREET IMPROVEMENTS
 Drawn: W.C.
 Checked: L.T.
 Prepared: THOMPSON CIVIL, LLC
 7017 GLENMORE AVE., SUITE #4
 ST. LOUIS, MISSOURI, 63121
 PHONE: 314-724-3127
 Date: DEC. 2009
 Sheet: 5 of 12