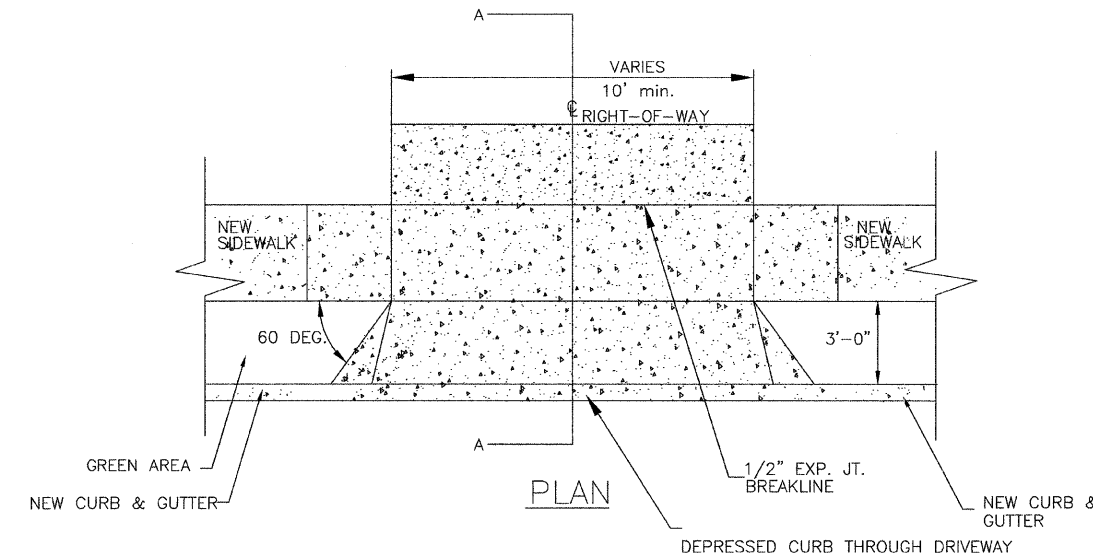
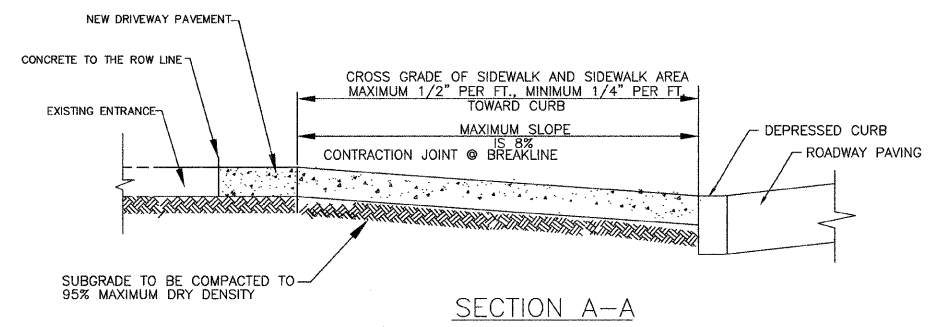
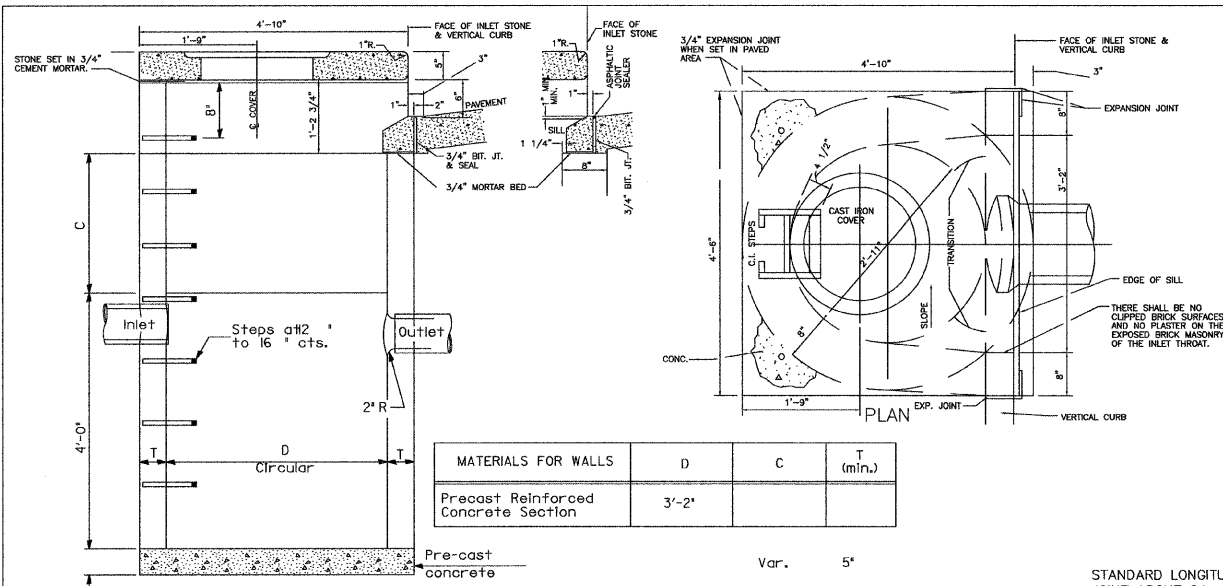
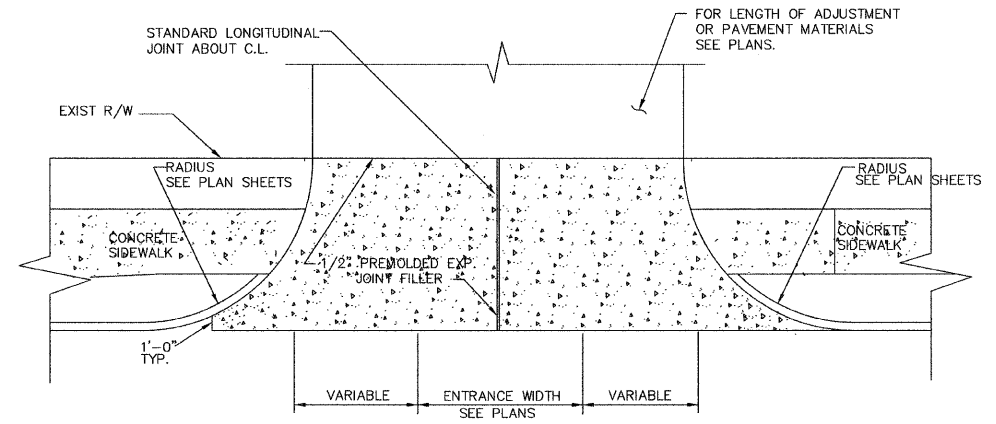


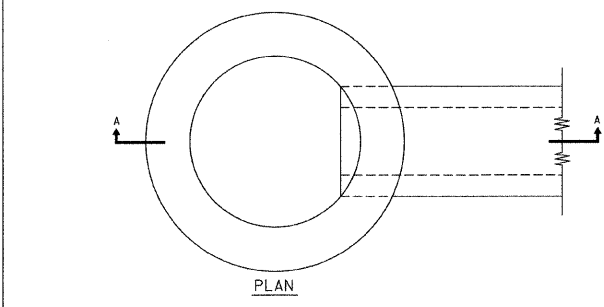
F.A.U. RTE.	SECTION	COUNTY	TOTAL SHEETS	SHEET NO.
9238	09-00022-00-PV	ST. CLAIR	12	8
		ILLINOIS	CONTRACT NO. 97421	



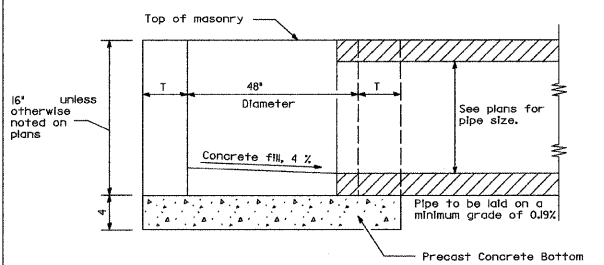
TYPICAL CONCRETE DRIVEWAY DETAIL  
NOTE: CONC. THICKNESS OF RESIDENTIAL DRIVE IS 6 INCHES. N.T.S.



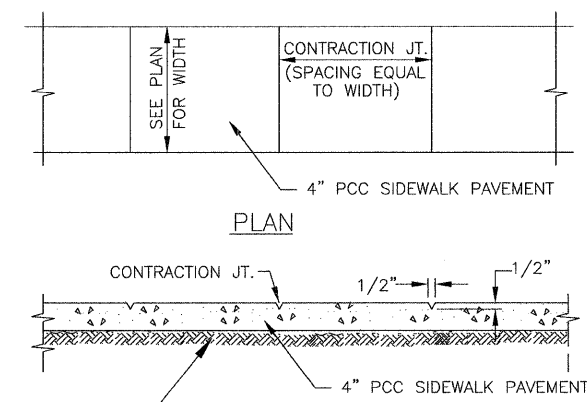
COMMERCIAL & ALLEY ENTRANCE DETAIL  
NOTE: CONC. THICKNESS OF COMMERCIAL & ALLEY ENTRANCE IS 8 INCHES.



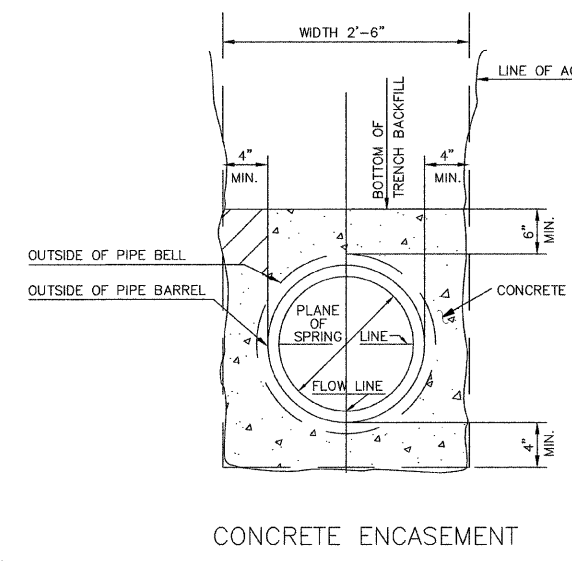
ALTERNATE MATERIALS FOR WALLS	T
BRICK MASONRY	8
CAST-IN-PLACE CONCRETE	6
CONCRETE MASONRY UNIT	5
PRECAST REINFORCED CONCRETE SECTION	3



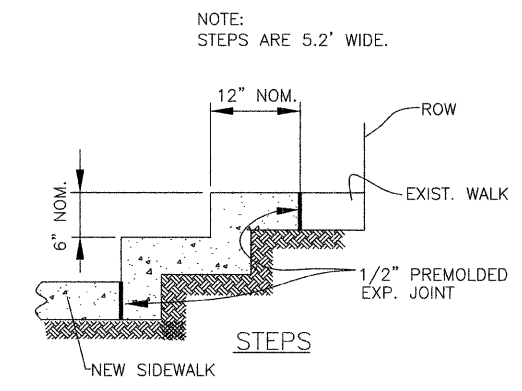
SECTION A-A  
INLETS TYPE A, SPECIAL WITH TYPE 8 GRATE



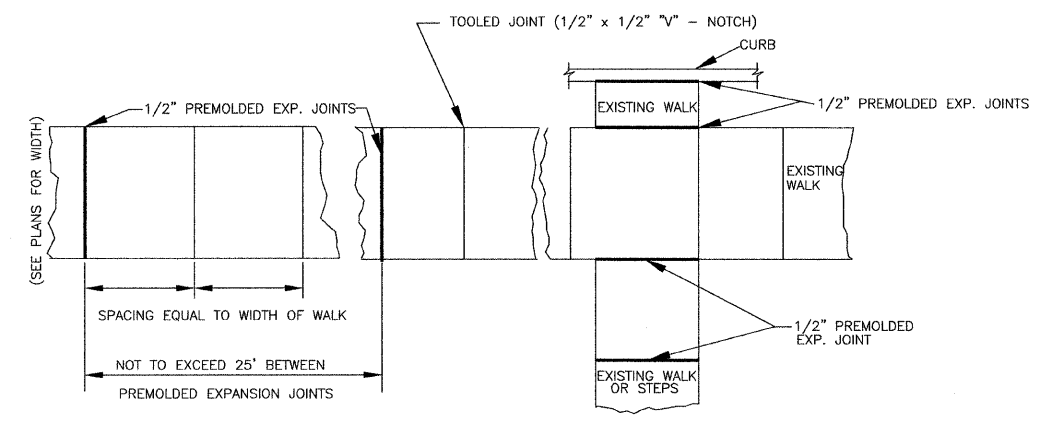
CONCRETE SIDEWALK DETAIL  
N.T.S.



CONCRETE ENCASEMENT



STEPS



CONCRETE SIDEWALK JOINTS  
N.T.S.

NOTE: MAX. JOINT SPACING TO BE 6 FT EITHER DIRECTION.

Designed:	L.T. VILLAGE OF WASHINGTON PARK STREET IMPROVEMENTS	
Drawn:	B.L.	
Checked:		
Prepared:	W.C. THOMPSON CIVIL, LLC 7017 GLENMORE AVENUE, SUITE 4 ST. LOUIS, MISSOURI, 63121 PHONE: 314-724-3127	
Date:	DEC. 2009	
Sheet:	8	of 12