

# VILLAGE OF WASHINGTON PARK

## INDEX OF SHEETS

SHEET NO.	DESCRIPTION
1	COVER SHEET
2	NOTES/SUMMARY OF QUANTITIES
3	TYPICAL SECTION
4-5	PLAN & PROFILES
6	INTERSECTION GEOMETRICS
7	REMOVAL PLANS
8	DETAILS
9-12	CROSS-SECTIONS

## PROPOSED ROADWAY PLANS

FAU 9238

SECTION 09-00022-00-PV

PROJECT NO. ARA-5011 (284)

HILL AVENUE (KINGSHIGHWAY TO VASSAR)

ST. CLAIR COUNTY

JOB NO. C-98-374-09

### IDOT STANDARDS

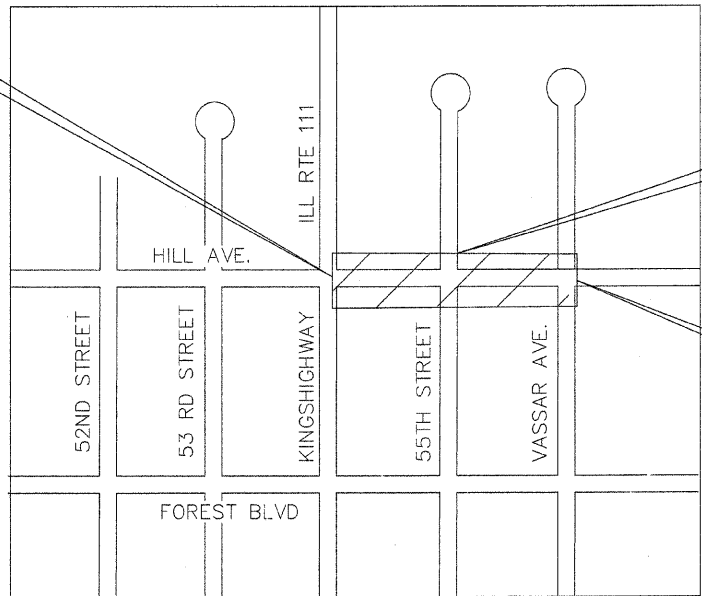
STANDARD NO.	DESCRIPTION
424001-05	SIDEWALK RAMPS ACCESSIBLE TO THE DISABLED
602001-01	CATCH BASIN TYPE A
604001-03	FRAME AND LIDS TYPE 1
604036-02	GRATE TYPE 8
606001-04	CONCRETE CURB TYPE B6.12
701501-05	URBAN LANE CLOSURE 2L, 2W UNDIVIDED
701801-04	LANE CLOSURE, MULTILANE, SIDEWALK CLOSURE
701901-01	TRAFFIC CONTROL DEVICES
780001-02	TYPICAL PAVEMENT MARKINGS

### LEGEND

EXISTING	NEW	
		MANHOLE
		INLET
		GRATE INLET
		DOUBLE INLET
		FENCE
		UNDERGROUND UTILITIES
		TREE
		BUSH
		HEDGE ROW
		STUMP
		UTILITY METER OR VALVE
		POWER POLE
		POWER POLE & GUY
		STREET SIGN
		FIRE HYDRANT
		LIGHT STANDARD
		MAIL BOX
		CONTROL POINT
		WATER METER
		WATER VALVE
		WATER LINE
		GAS LINE
		OVERHEAD ELECTRIC TO BE REMOVED
TBR		TO BE REMOVED & RELOCATED BY OTHERS
TBR&RelBO		TO BE REMOVED & RELOCATED BY OTHERS
TBABO		TO BE ADJUSTED BY OTHERS

100' 200' 300' 1"=100'  
 10' 20' 30' 1"=10'  
 50' 100' 1"=50'  
 50' 100' 1"=40'  
 50' 100' 1"=30'  
 50' 100' 1"=20'



BEGIN IMPROVEMENT  
STA 0+00

PROJECT  
LOCATION

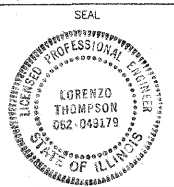
END IMPROVEMENT  
STA 6+78.15

### LOCATION MAP

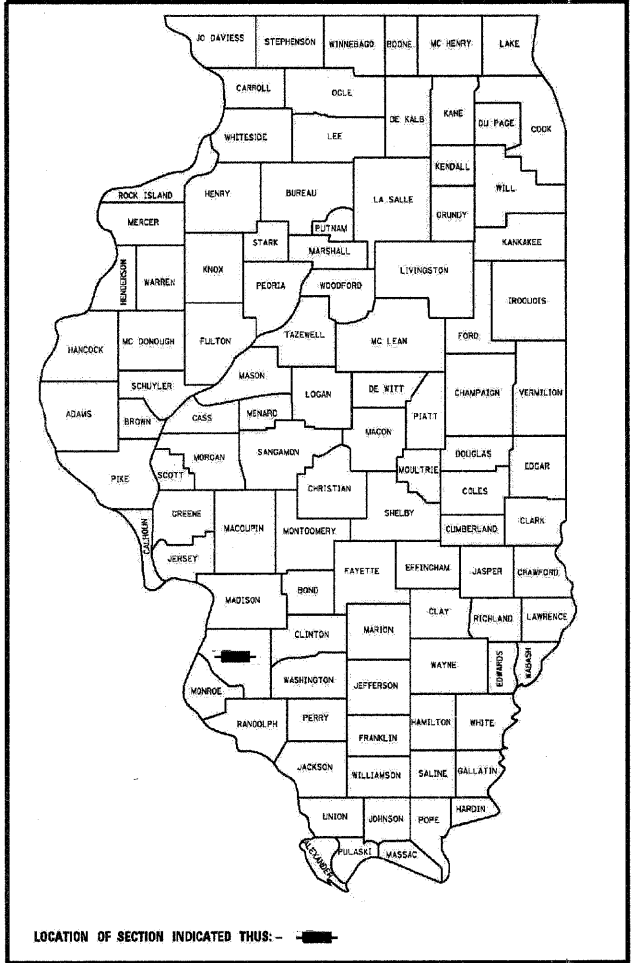
NOT TO SCALE

GROSS LENGTH = 678.15 FT. = 0.128 MILES

SITE DATA:  
DESIGN SPEED: -- 30 MPH  
POSTED SPEED: -- 30 MPH



Signature Lorenzo Thompson Date 1/8/2010  
 Lorenzo Thompson, P.E.  
 License No. 062-049179  
 Expiration Date 11/30/2011



LOCATION OF SECTION INDICATED THUS: -

FUNCTIONAL CLASSIFICATION  
URBAN COLLECTOR  
2009 ADT = 375  
P.V.=95% S.U.=0% M.U.=5%

STATE OF ILLINOIS  
DEPARTMENT OF TRANSPORTATION

Approved John Thornton  
John Thornton, Mayor

Passed Lorenz  
District #8 Engineer of Local Roads & Streets

Releasing for Bid  
Based on Limited  
Review Mary C. Ramirez  
Deputy Director of Highways, Region #5 Engineer

J.U.L.I.E.  
JOINT UTILITY LOCATION INFORMATION FOR EXCAVATION  
1-800-892-0123  
OR 811

**GENERAL NOTES:**

- Site related work, including paving, earthwork, curbing storm sewer and drainage structure cleaning and repair, etc., shall conform to the "Standard Special for Road and Bridge Construction in Illinois", adopted January 1, 2007 "Soil Erosion and Sediment Control in Illinois", or their current editions thereof.
- The Contractor shall dispose of all surplus, unstable and/or unsuitable materials resulting from construction of the project, including those resulting from removal of existing sidewalk, curbs and pavements. Such materials shall be disposed of by the Contractor at his/her own expense in accordance with Article 202.08 of the Standard Specifications.
- The removal of unusable and unstable material in all cut and fill areas and their replacement with satisfactory material, where required, shall be included in cost of the Pay Item for Cubic Yard of EARTH EXCAVATION and in accordance with Article 202.03 and Article 202.08 of the Standard Specifications.
- Existing utilities shown on plans are plotted from available information. Their location is to be considered a approximate only and there may be others not shown. It shall be the Contractors' responsibility to locate and protect all utilities. Any damage to utilities shall be the Contractors responsibility.
- The Contractor is advised that no underground investigation of sewers or other utilities has been performed in connection with this project. Plan information has been obtained from visual surface inspection of available documentation. The Owner and Engineer assume no responsibility for the presence, specific size, location of condition of underground utility and distribution systems.
- In order to avoid damage to underground utilities, the Contractor shall contact all utility companies not belonging to the J.U.L.I.E. system and obtain the location and depth of their respective facilities. A list of known Utilities is presented on this Sheet. J.U.L.I.E. will notify all utility companies (belonging to the J.U.L.I.E. system) involved that their respective utility should be located. A minimum of forty-eight (48) hours advanced notice is required.
- The saw cutting of existing curb to a sufficient depth to create a clean vertical joint shall be considered included in the cost of curb removal. Curb and Sidewalk Removal and Replacement shall be done to the joint nearest to the limit indicated on the plans. Removal of steps shall be paid for as Sidewalk Removal.
- All catch basin lids, frames, grates and storm sewer appurtenances deemed salvageable by the Engineer shall become the property of the Village of Washington Park and stockpiled for reuse within the limits of this project at a location designated by the Engineer. The cost of stockpiling these salvageable items shall be considered included in the cost of to the removal item involved.
- The thickness of H-M-A mixtures shown on plans is the nominal thickness. Deviations from the nominal thickness will be permitted when such deviations occur due to irregularities in the existing surface or based on which the H-M-A mixture is placed.
- The Contractor shall place pavement so that flow along curbs is maintained, including flow through intersections around curb returns. Place and compact fill in horizontal lifts not to exceed 6" when in loose condition. All lifts shall be compacted to 95% of the maximum dry density in accordance with ASTM standards.
- All stations/offsets shown through the plans unless otherwise noted are referenced to the center line.
- All earth areas disturbed, for whatever reason, shall be seeded with Class 1 seeding as described in the IDOT Standard Specifications Section 250. Areas disturbed and seeded beyond the construction limits shall be at the Contractor's expense.

Contractor shall provide erosion and siltation control, as needed to prevent damage of off site properties until the pavement surface has been installed and vegetation in all disturbed areas has been established, at which time he shall be responsible for removal of all temporary erosion control and repair of any eroded areas.

- Seeding for this project shall be Class 1. For the purpose of this contract, Spring seeding is defined as that performed between March 1 and June 1. Fall seeding is defined as that performed between August 1 and November 15. Seeding will not be permitted at any time when the ground is frozen, wet or in an unillable condition. Fertilizing nutrients for Seeding Class 1 shall be applied at the rate of 270 pounds per acre. The fertilizer for Class 1 seeding shall be a ready-mixed material.
- Mulch Method 1 shall be included in the cost of Seeding Class 1 and provided per Section 251 of the Standard Specifications.
- The following constants were used in the calculation of quantities for this project.
 

H-M-A (Surface and Binder)	115 lbs/S.Y./inch
Bituminous Materials Prime Coat	0.40 gal/S.Y./ (paved)
Aggregate Prime Coat	6 lbs/S.Y. (paved)
Granular Materials	2.10 tons/C.Y.
- Intersection radii shall meet the back of existing curb lines.
- Earthwork and material required in connection with excavation, embankments, backfilling behind drives, curbs, sidewalks and drainage structures, and grading and shaping of areas disturbed by the Contractor shall not be paid for separately, but shall be considered included in the cost of various items of work involved and no additional compensation or remuneration will be allowed.
- All intersection are to be constructed to warp and drain to existing or proposed inlets.
- The Contractor shall provide positive drainage to inlets at all time during construction. Excavation for new storm sewer is included in the pay item for new pipe.

**LIST OF UTILITIES:**

Illinois American Water Company  
100 North Water Works Drive  
Belleville, IL 62223  
Phone: 618-996-2202

Metro East Sanitary Sewer District  
1800 Edison Street  
Granite City, IL 62040  
Phone: 618-452-9400

AMEREN-IP (CAS)  
1050 West Blvd.  
Belleville, IL 62222  
Phone: 618-236-4338

AMEREN-UE (ELECTRIC)  
500 E. Broadway Street  
East St. Louis, IL 62201  
Phone: 618-482-2238

Charter Communications  
12405 Powerscourt Drive  
St. Louis, MO 63131  
Phone: 314-965-0555

AT&T Telephone Co.  
203 Coethe Street  
Collinsville, IL 62234  
Phone: 618-346-6494

**HMA MIXTURE TABLE**

	BINDER	SURFACE
AC/PG	PG64-22	PG64-22
RAP%	15%	10%
DESIGN AIR VOIDS	4% @ N50	4% @ N50
MIX COMP	IL 19.0	IL 12.5
GRAD. MIX		
FRIC. AGG.	MIX B	MIX C

**SIGNS AND POSTS**

LOCATION	SIGN	AREA(SQ FT)	POSTS	LENGTH (FOOT)	
HILL AND VASSAR	2-STOP	1-STREET NAME	13.6	3	24
HILL AND 56TH	2-STOP	1-STREET NAME	13.6	3	24
HILL AND KINGSHIGHWAY		1-STREET NAME	3.8	1	8
STATION 4+00	2-SPEED LIMIT		12.5	2	16
		TOTAL	43.5		72.0

F.A.U. RTE.	SECTION	COUNTY	TOTAL SHEETS	SHEET NO.
9238	09-00022-00-PV	ST. CLAIR	12	2

ILLINOIS CONTRACT NO. 97421

**SUMMARY OF QUANTITIES**

CODE NO.	ITEM DESCRIPTION	UNIT	QUANTITY
20100210	TREE REMOVAL (OVER 15 UNIT DIAMETER)	UNIT	42.0
20200100	EARTH EXCAVATION	CU YD	1268.9
20800150	TRENCH BACKFILL	CU YD	83.4
21001000	GEOTECHNICAL FABRIC FOR GROUND STABILIZATION	SQ YD	2360.9
21101615	TOPSOIL FURNISH AND PLACE, 4"	SQ YD	1292.5
25000100	SEEDING, CLASS 1	ACRE	0.27
25000400	NITROGEN FERTILIZER NUTRIENT	POUND	24.3
25000500	PHOSPHORUS FERTILIZER NUTRIENT	POUND	24.3
25000600	POTASSIUM FERTILIZER NUTRIENT	POUND	24.3
28000250	TEMPORARY EROSION CONTROL SEEDINGS	POUND	270.0
28100101	STONE RIPRAP, CLASS A1	SQ YD	22.2
35101100	AGGREGATE BASE COARSE, TYPE A 12 INCH	SQ YD	2360.9
40201000	AGGREGATE FOR TEMPORARY ACCESS	TON	54.0
40600100	BITUMINOUS MATERIAL (PRIME COAT)	GALLON	944.4
40600300	AGGREGATE (PRIME COAT)	TON	7.1
40603080	HOT-MIX ASPHALT BINDER COURSE, IL-19.0, N50	TON	237.6
40603310	HOT-MIX ASPHALT SURFACE COURSE, MIX "C", N50	TON	305.4
42300200	PORTLAND CEMENT CONCRETE DRIVEWAY PAVEMENT 6 INCH	SQ YD	59.8
42300400	PORTLAND CEMENT CONCRETE DRIVEWAY PAVEMENT 8 INCH	SQ YD	178.4
42400100	PORTLAND CEMENT CONCRETE SIDEWALK 4 INCH	SQ FT	5892.6
42400800	DETECTABLE WARNINGS	SQ FT	60.0
44000100	PAVEMENT REMOVAL	SQ YD	1852.9
44000200	DRIVEWAY PAVEMENT REMOVAL	SQ YD	267.1
44000300	CURB REMOVAL	FOOT	33.5
44000500	COMBINATION CURB AND GUTTER REMOVAL	FOOT	122.5
44000600	SIDEWALK REMOVAL	SQ FT	130.3
50300280	CONCRETE ENCASEMENT	CU YD	12.7
550B0050	STORM SEWERS, CLASS B, TYPE 1 12"	FOOT	561.0
55100500	STORM SEWER REMOVAL, 12"	FOOT	173.1
60200205	CATCH BASINS, TYPE A, 4'-DIAMETER, WITH TYPE 1 FRAME, CLOSED LID	EACH	1
60202710	CATCH BASINS, TYPE A, 4'-DIAMETER, WITH SPECIAL FRAME AND GRATE	EACH	5
60239400	INLETS, TYPE A, SPECIAL, TYPE B GRATE	EACH	8
60500040	REMOVING MANHOLES	EACH	2
60500060	REMOVING INLETS	EACH	1
60603800	COMBINATION CONCRETE CURB AND GUTTER, TYPE B-6.12	FOOT	1393.2
60605000	COMBINATION CONCRETE CURB AND GUTTER, TYPE B-6.24	FOOT	89.0
* 66900200	NON-SPECIAL WASTE DISPOSAL	CU YD	35.0
* 66900450	SPECIAL WASTE PLAN AND REPORTS	LSUM	1
* 66900530	SOIL DISPOSAL ANALYSIS	EACH	1
67100100	MOBILIZATION	L. SUM	1
70101700	TRAFFIC CONTROL AND PROTECTION	L. SUM	1
72000100	SIGN PANEL TYPE 1	SQ FT	43.5
73000100	WOOD SIGN SUPPORT	FOOT	72.0
* 78001130	PAINT PAVEMENT MARKING LINE, 6"	FOOT	54
* 78001150	PAINT PAVEMENT MARKING LINE, 12"	FOOT	13
Z0012450	CONCRETE STEPS	CU YD	0.30
XX005696	SEWER CONNECTION TO STRUCTURES	EACH	1

\* SPECIALTY ITEMS

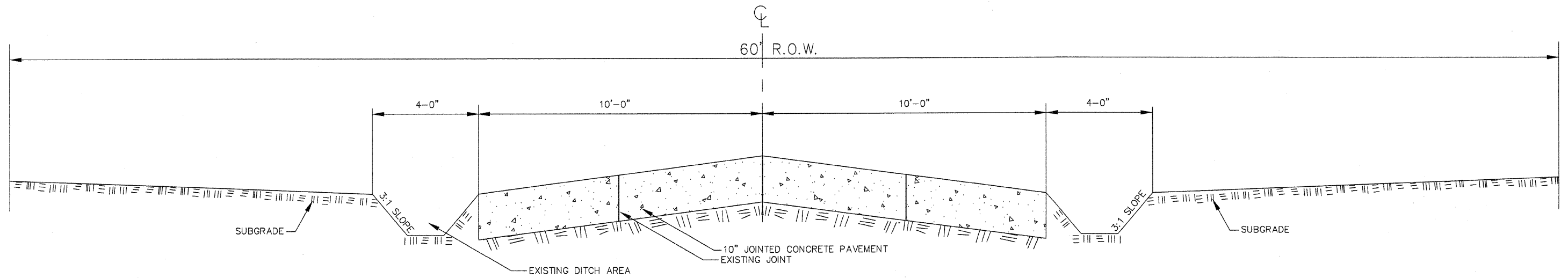
**UTILITY DISCLAIMER**

THE TYPE, SIZE, AND LOCATION OF UTILITIES AS DELINEATED ON THESE TOPOGRAPHIC LAND SURVEY DOCUMENTS AND/OR CIVIL ENGINEERING DESIGN DOCUMENTS HAVE BEEN DETERMINED BY REVIEW OF AVAILABLE EXISTING "AS-BUILT" OR RECORD DRAWINGS; FIELD SURVEY OF J.U.L.I.E. MARKED UTILITIES; OR FIELD SURVEY OF ABOVE GROUND SURFACE UTILITY FEATURES. THE OWNER AND ENGINEER HAVE NOT UNDERTAKEN SUBSURFACE EXPLORATORY INVESTIGATIONS TO CONFIRM OR VERIFY THE UTILITIES SHOWN ON THESE DOCUMENTS, THEREFORE THEIR EXACT LOCATION, SIZE, AND FUNCTION MUST BE CONSIDERED APPROXIMATE AND MUST BE FIELD CONFIRMED BY THE CONTRACTOR.

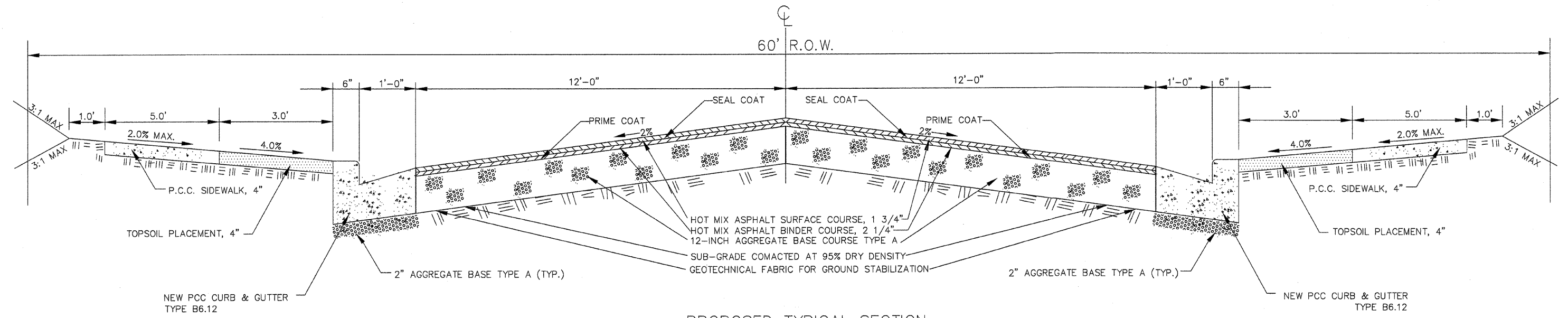
THE ENGINEER AND OWNER FURTHER DO NOT WARRANT THAT ALL UTILITIES HAVE BEEN ILLUSTRATED ON THESE DOCUMENTS. THE CONTRACTOR IS SOLELY RESPONSIBLE FOR CONTACTING J.U.L.I.E. FOR FIELD VERIFICATION OF ALL UTILITIES ON THE SITE PRIOR TO COMMENCEMENT OF CONSTRUCTION. IF THE CONTRACTOR DETERMINES THAT SUBSTANTIAL DISCREPANCY EXISTS BETWEEN FIELD VERIFIED UTILITIES AND THESE PLANS WHICH WOULD SIGNIFICANTLY AFFECT THE FUNCTION, COST, OR PERFORMANCE OF THE PROJECT, THE CONTRACTOR SHALL IMMEDIATELY CONTACT THE ENGINEER FOR CLARIFICATION AND PROJECT DIRECTION.

Designed: L.T.	VILLAGE OF WASHINGTON PARK STREET IMPROVEMENTS	
Drawn: W.C.	GENERAL NOTES & SUMMARY OF QUANTITIES	
Checked: L.T.		
Prepared: THOMPSON CIVIL, LLC 7017 GLENMORE AVE., SUITE 4 ST. LOUIS, MISSOURI, 63121 PHONE: 314-274-3127	Date: DEC. 2009	Sheet 2 of 12

F.A.U. RTE. 9238	SECTION 09-00022-00-PV	COUNTY ST. CLAIR	TOTAL SHEETS 12	SHEET NO. 3
		ILLINOIS CONTRACT NO. 97421		

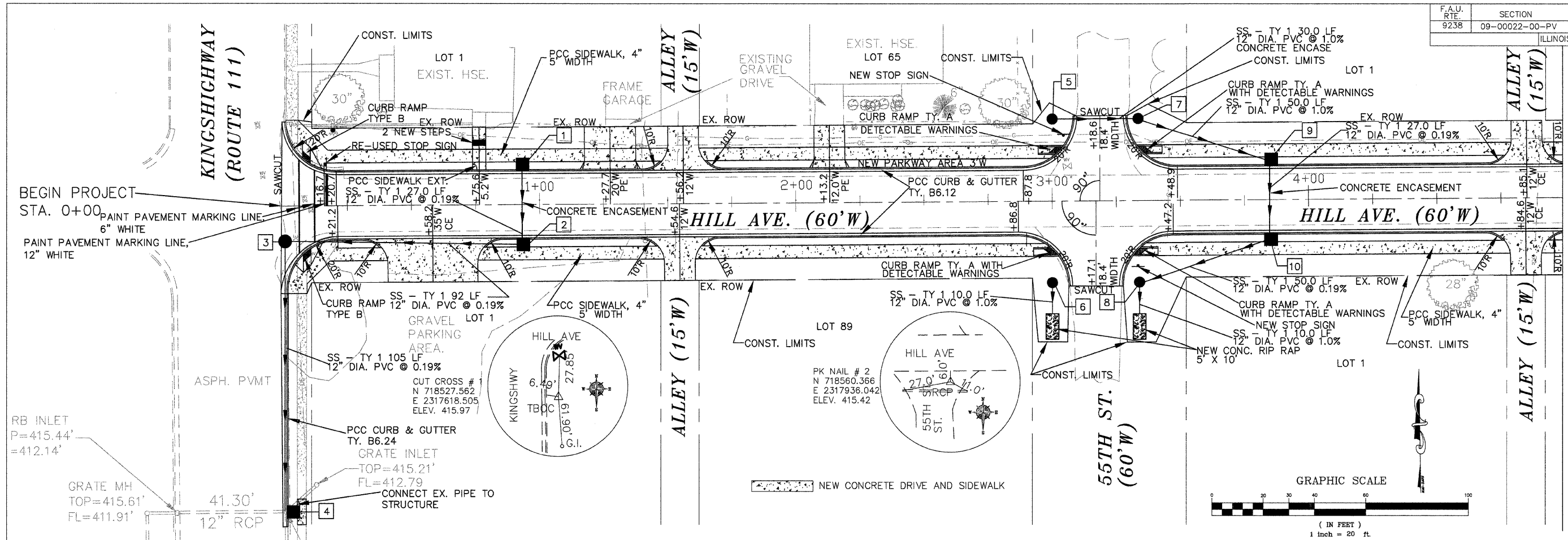


EXISTING TYPICAL SECTION  
HILL AVENUE  
STA. 0+00 TO STA. 6+78.15



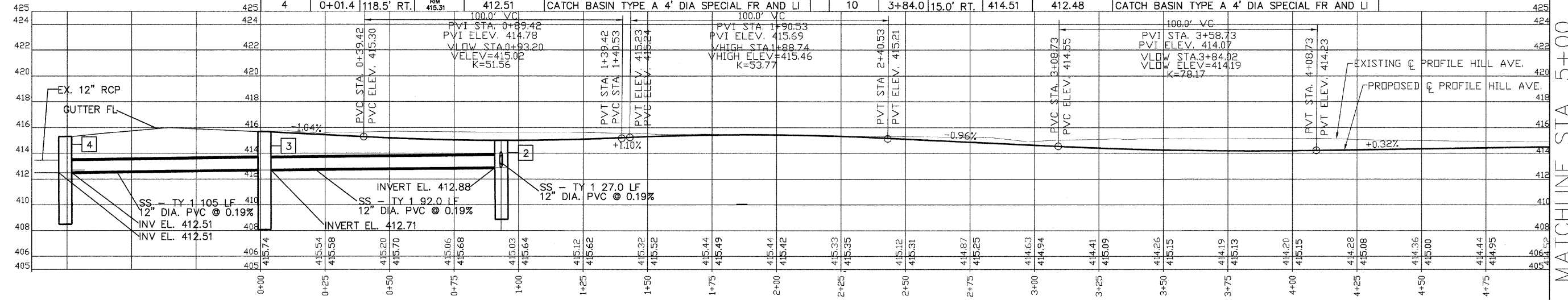
PROPOSED TYPICAL SECTION  
HILL AVENUE  
STA. 0+00 TO STA. 6+78.15

Designed: L.T.	VILLAGE OF WASHINGTON PARK STREET IMPROVEMENTS	
Drawn: W.C.	TYPICAL SECTION	
Checked: L.T.	Prepared: THOMPSON CIVIL, LLC 7017 GLENMORE AVE., SUITE #4 ST. LOUIS, MISSOURI, 63121 PHONE: 314-724-3127	Date: DEC. 2009 Sheet: 3 of 12



STRUCT. NUMBER	STATION	OFFSET	TOP ELEV.	INVERT ELEV.	STRUCTURE TYPE
1	0+93.2	15.0' LT.	415.72	412.93	CATCH BASIN TYPE A 4' DIA SPECIAL FR AND LI
2	0+93.2	15.0' RT.	415.72	412.88	CATCH BASIN TYPE A 4' DIA SPECIAL FR AND LI
3	0+01.4	13.8' RT.	415.45	412.71	CATCH BASIN TYPE A 4' DIA TYPE 1 FR, CL
4	0+01.4	118.5' RT.	415.31	412.51	CATCH BASIN TYPE A 4' DIA SPECIAL FR AND LI

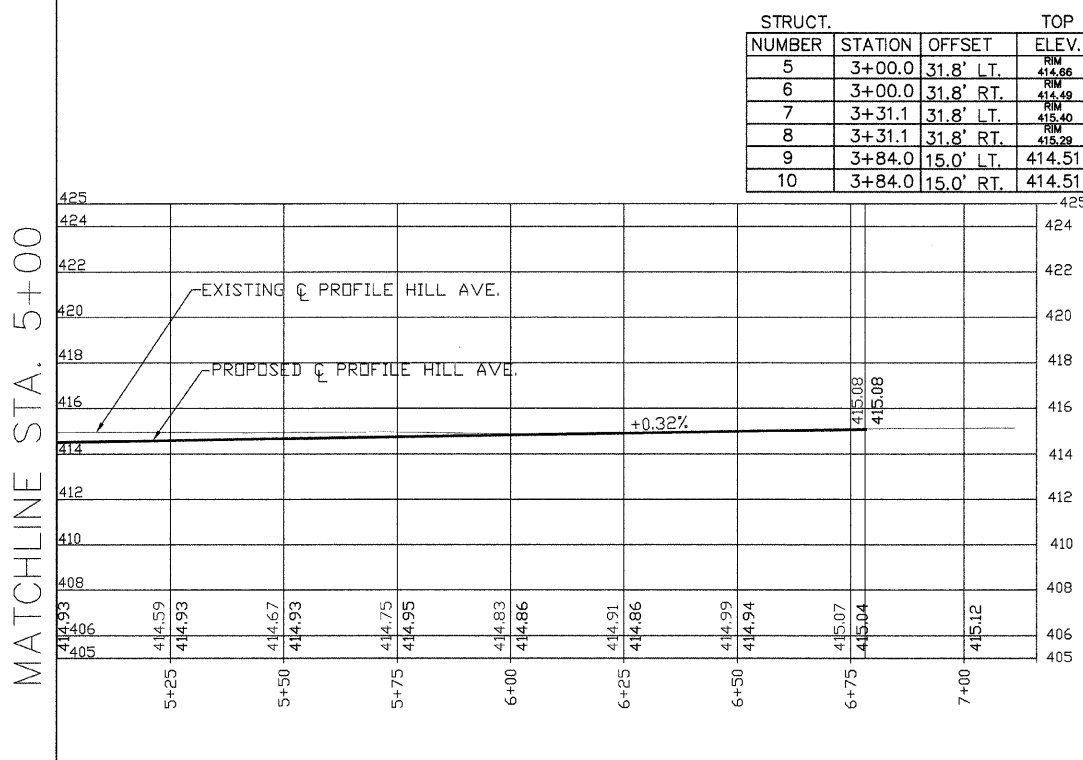
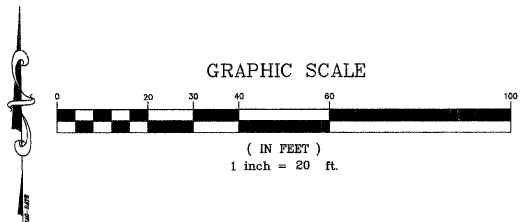
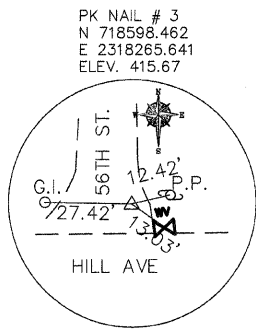
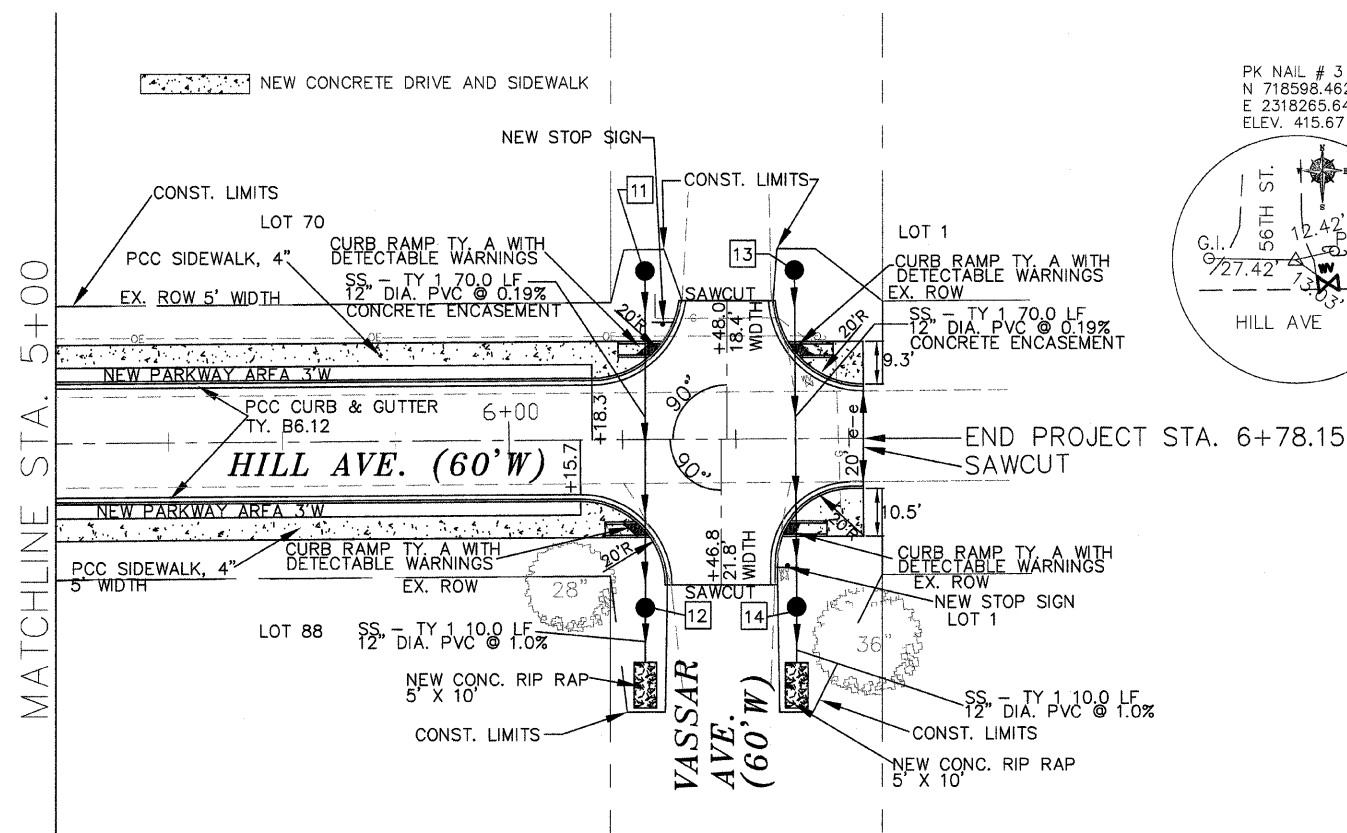
STRUCT. NUMBER	STATION	OFFSET	TOP ELEV.	INVERT ELEV.	STRUCTURE TYPE
5	3+00.0	31.8' LT.	414.86	413.33	INLET TYPE A 4' DIA WITH TYPE 8 FRAME
6	3+00.0	31.8' RT.	414.49	413.16	INLET TYPE A 4' DIA WITH TYPE 8 FRAME
7	3+31.1	31.8' LT.	415.40	413.03	INLET TYPE A 4' DIA WITH TYPE 8 FRAME
8	3+31.1	31.8' RT.	415.40	412.39	INLET TYPE A 4' DIA WITH TYPE 8 FRAME
9	3+84.0	15.0' LT.	414.51	412.53	CATCH BASIN TYPE A 4' DIA SPECIAL FR AND LI
10	3+84.0	15.0' RT.	414.51	412.48	CATCH BASIN TYPE A 4' DIA SPECIAL FR AND LI



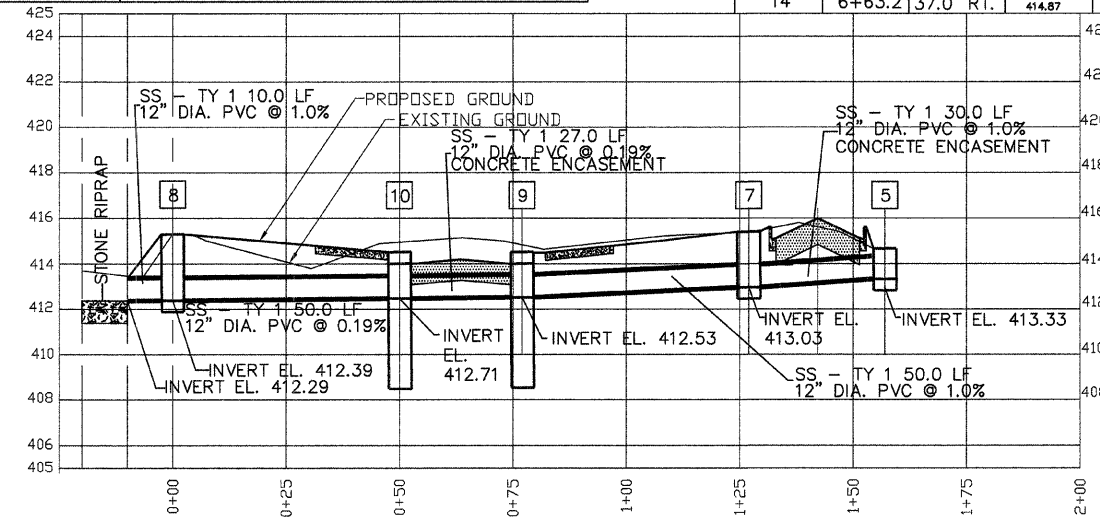
NOTE: SEE SHEET 5 FOR STORM SEWER PROFILE FOR STRUCTURES 8-10-9-7-5..

Designed:	VILLAGE OF WASHINGTON PARK STREET IMPROVEMENTS	
Drawn:	W.C.	
Checked:	L.T.	
Prepared:	THOMPSON CIVIL, LLC 7017 GLENMORE AVE., SUITE #4 ST. LOUIS, MISSOURI, 63121 PHONE: 314-724-3127	
Date:	DEC. 2009	
Sheet:	4 of 12	

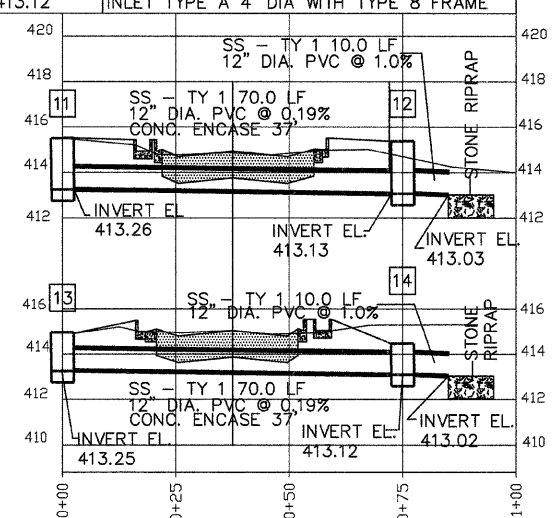
F.A.U. RTE.	SECTION	COUNTY	TOTAL SHEETS	SHEET NO.
9238	09-00022-00-PV	ST. CLAIR	12	5
		ILLINOIS	CONTRACT NO. 97412	



STRUCT. NUMBER	STATION	OFFSET	TOP ELEV.	INVERT ELEV.	STRUCTURE TYPE
5	3+00.0	31.8' LT.	414.66	413.33	INLET TYPE A 4' DIA WITH TYPE 8 FRAME
6	3+00.0	31.8' RT.	414.49	413.16	INLET TYPE A 4' DIA WITH TYPE 8 FRAME
7	3+31.1	31.8' LT.	415.40	413.03	INLET TYPE A 4' DIA WITH TYPE 8 FRAME
8	3+31.1	31.8' RT.	415.28	412.39	INLET TYPE A 4' DIA WITH TYPE 8 FRAME
9	3+84.0	15.0' LT.	414.51	412.53	CATCH BASIN TYPE A 4' DIA SPECIAL FR AND LI
10	3+84.0	15.0' RT.	414.51	412.48	CATCH BASIN TYPE A 4' DIA SPECIAL FR AND LI

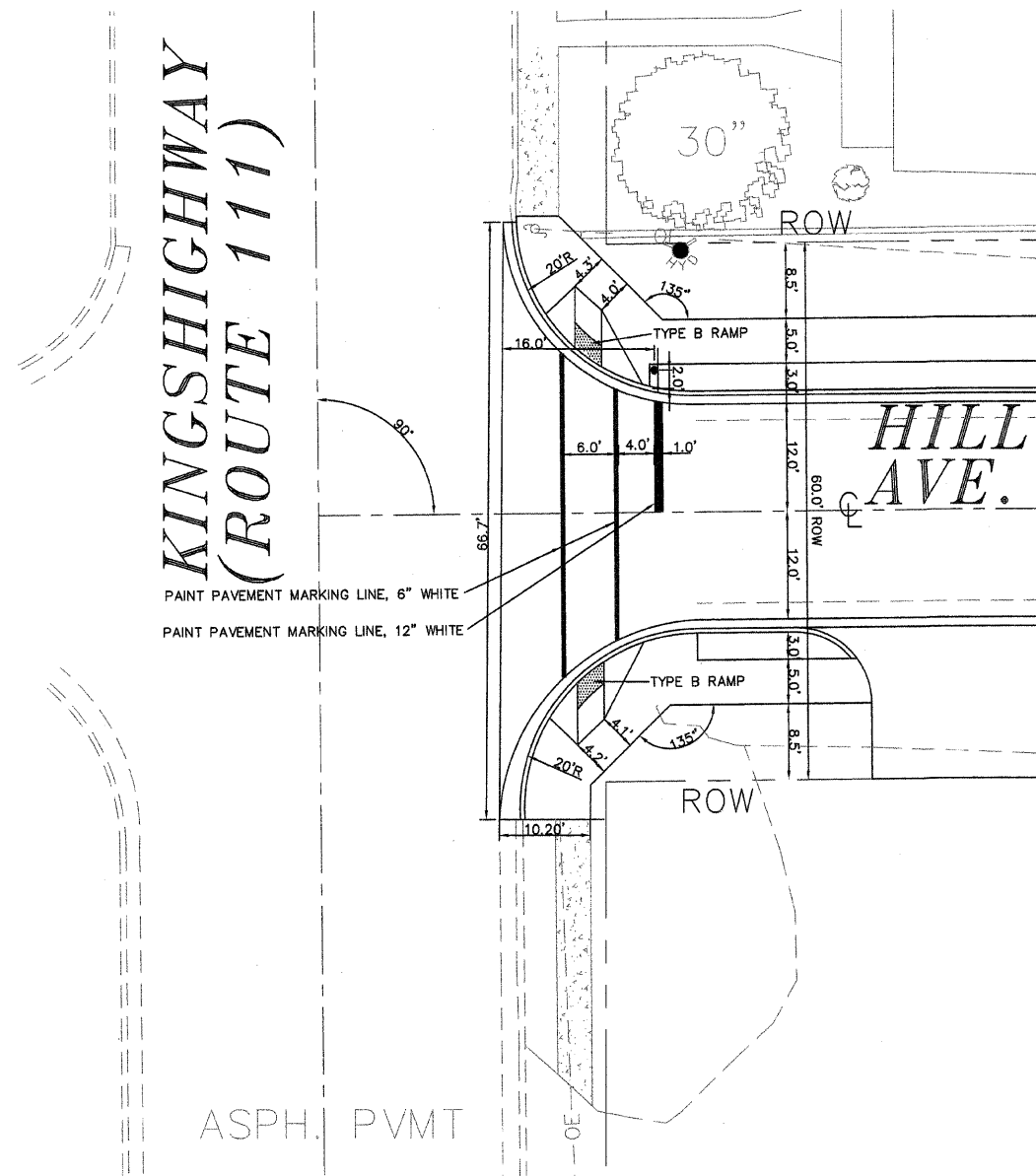
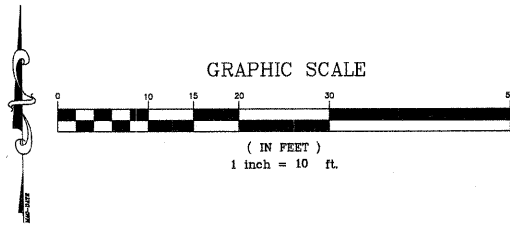


STRUCT. NUMBER	STATION	OFFSET	TOP ELEV.	INVERT ELEV.	STRUCTURE TYPE
11	6+30.0	37.0' LT.	415.50	413.26	INLET TYPE A 4' DIA WITH TYPE 8 FRAME
12	6+30.0	37.0' RT.	415.37	414.04	INLET TYPE A 4' DIA WITH TYPE 8 FRAME
13	6+63.2	37.0' LT.	415.00	413.25	INLET TYPE A 4' DIA WITH TYPE 8 FRAME
14	6+63.2	37.0' RT.	414.87	413.12	INLET TYPE A 4' DIA WITH TYPE 8 FRAME



Designed: VILLAGE OF WASHINGTON PARK STREET IMPROVEMENTS  
 Drawn: W.C.  
 Checked: L.T.  
 Prepared: THOMPSON CIVIL, LLC  
 7017 GLENMORE AVE., SUITE #4  
 ST. LOUIS, MISSOURI, 63121  
 PHONE: 314-724-3127  
 Date: DEC. 2009  
 Sheet: 5 of 12


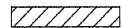
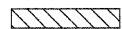
F.A.U. RTE.	SECTION	COUNTY	TOTAL SHEETS	SHEET NO.
9238	09-00022-00-PV	ST. CLAIR	12	6
		ILLINOIS	CONTRACT NO. 97421	

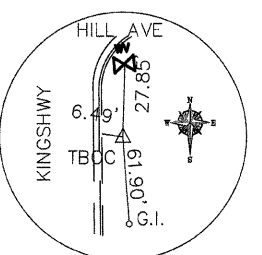
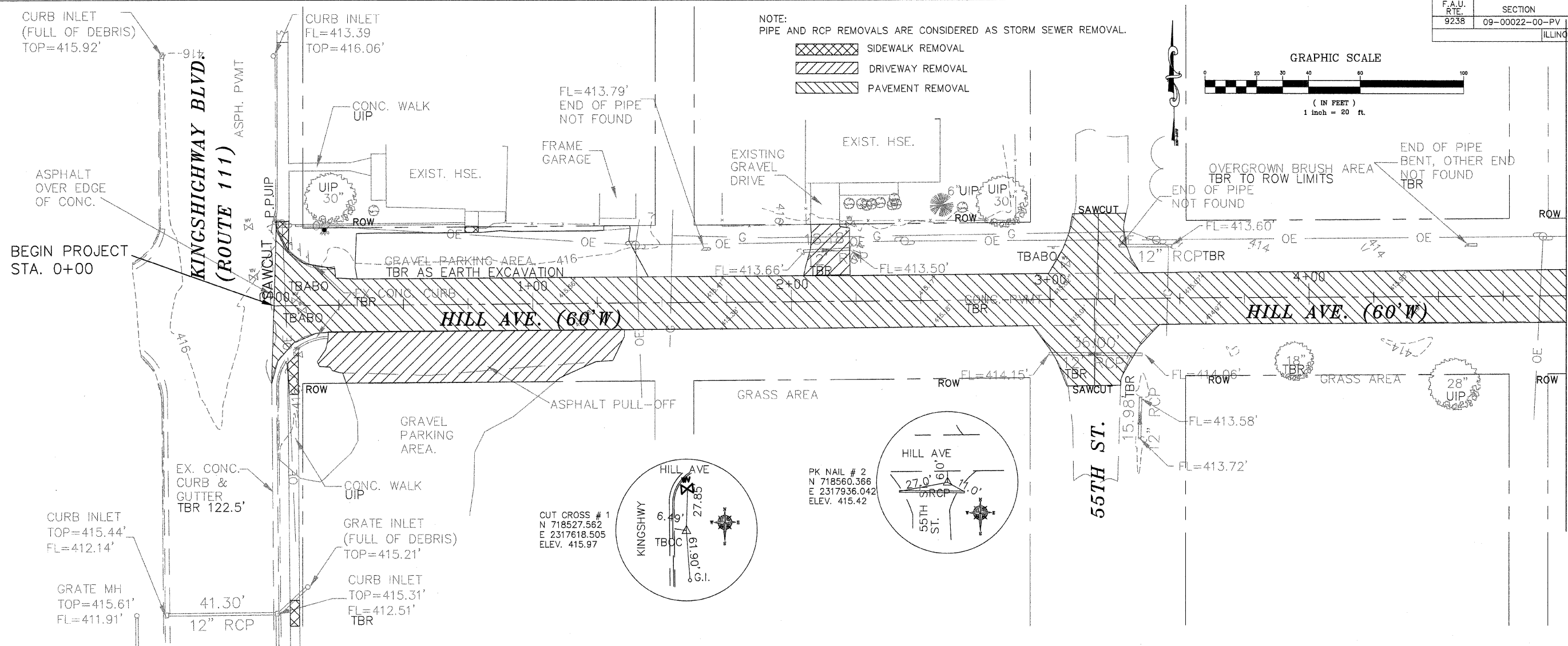
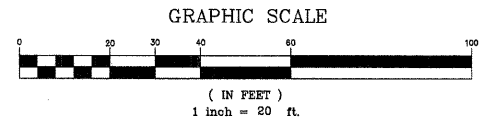


Designed: L.T.	VILLAGE OF WASHINGTON PARK STREET IMPROVEMENTS	
Drawn: W.C.		
Checked: L.T.	INTERSECTION GEOMETRICS	
Prepared:	THOMPSON CIVIL, LLC 7017 GLENMORE AVE., SUITE #4 ST. LOUIS, MISSOURI, 63121 PHONE: 314-724-3127	Date: DEC. 2009
		Sheet: 6 of 12

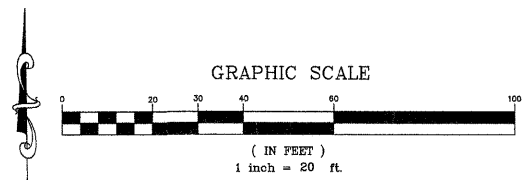
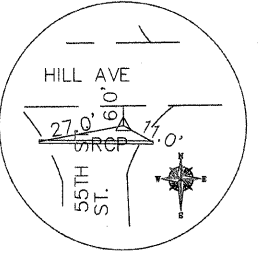
F.A.U. RTE.	SECTION	COUNTY	TOTAL SHEETS	SHEET NO.
9238	09-00022-00-PV	ST. CLAIR	12	7
		ILLINOIS	CONTRACT NO. 97421	


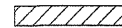
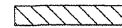
NOTE:  
PIPE AND RCP REMOVALS ARE CONSIDERED AS STORM SEWER REMOVAL.

-  SIDEWALK REMOVAL
-  DRIVEWAY REMOVAL
-  PAVEMENT REMOVAL

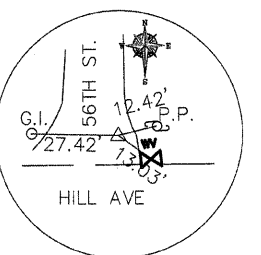
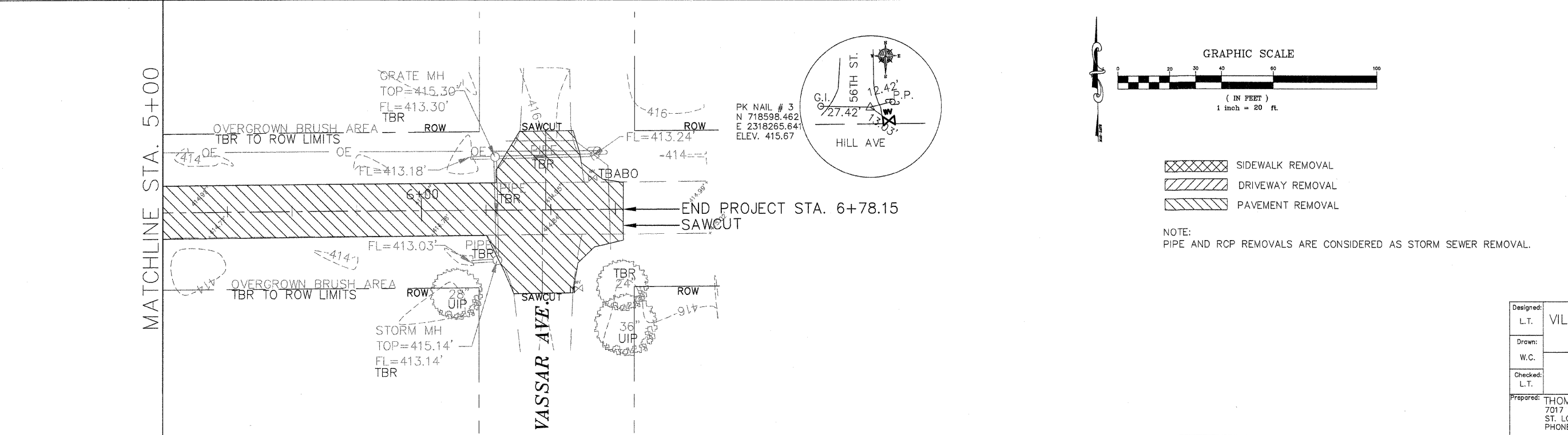


PK NAIL # 2  
N 718560.366  
E 2317936.042  
ELEV. 415.42



-  SIDEWALK REMOVAL
-  DRIVEWAY REMOVAL
-  PAVEMENT REMOVAL

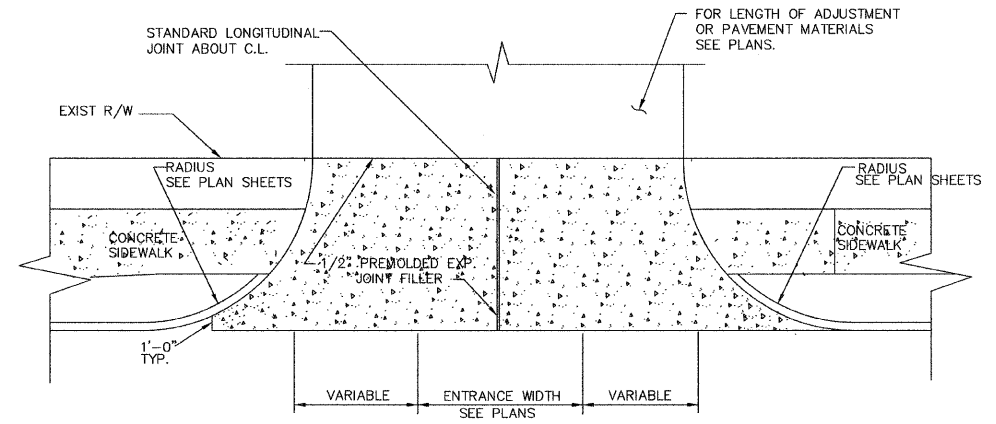
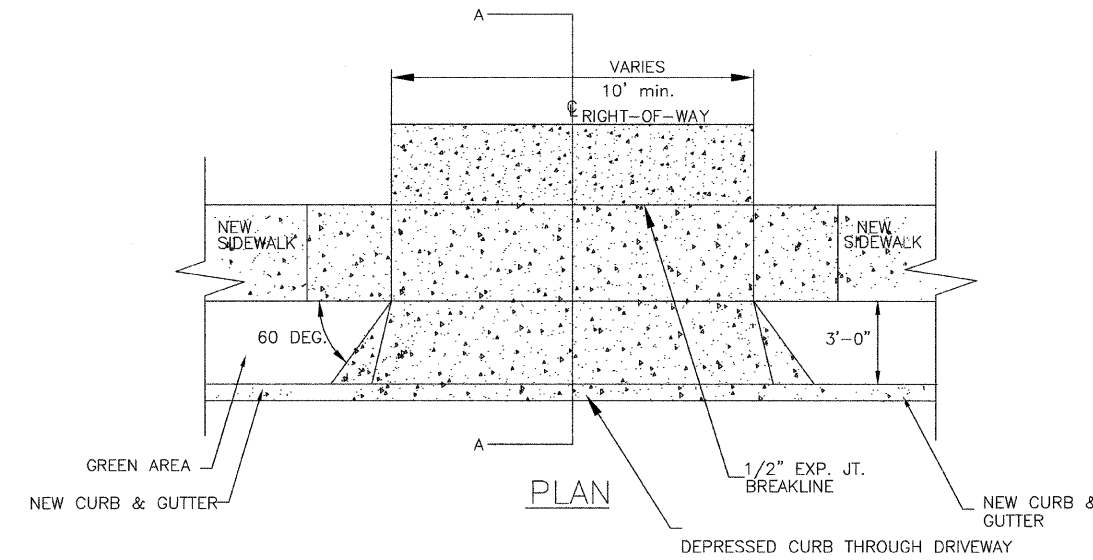
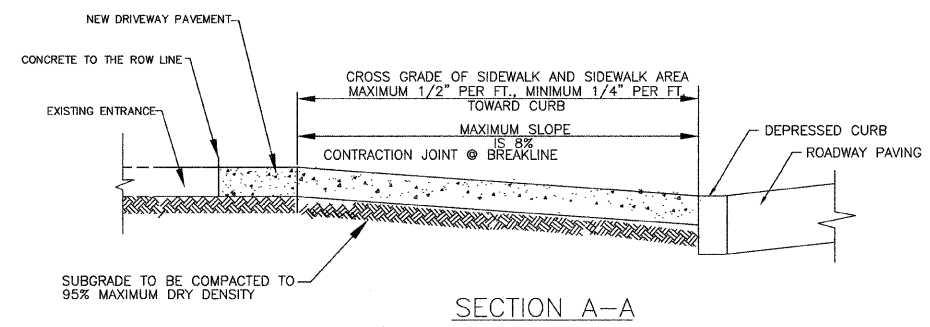
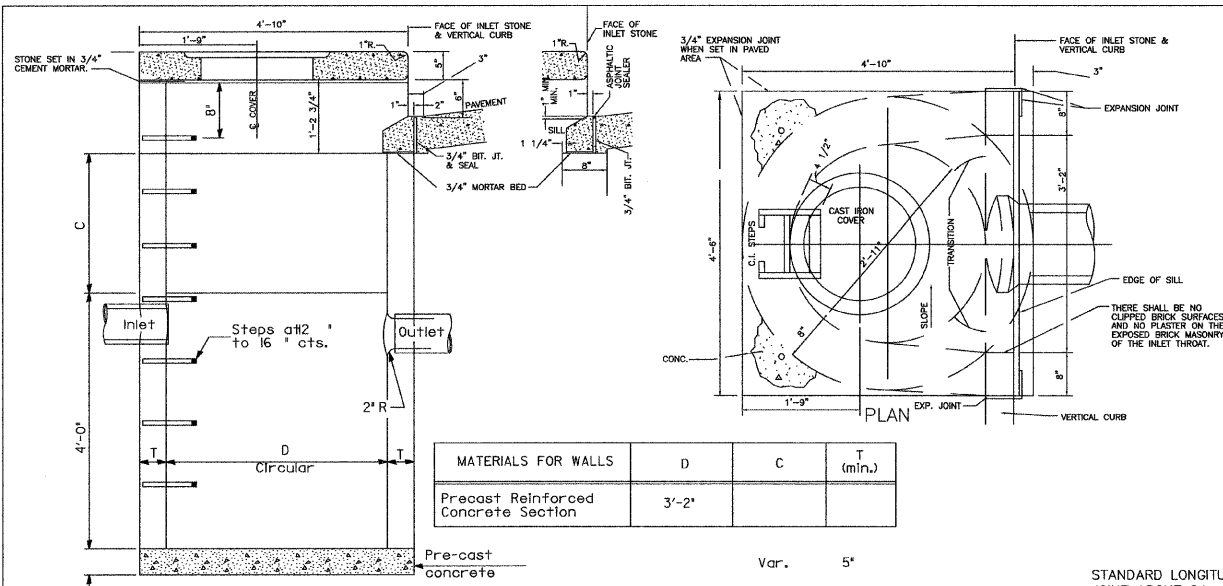
NOTE:  
PIPE AND RCP REMOVALS ARE CONSIDERED AS STORM SEWER REMOVAL.



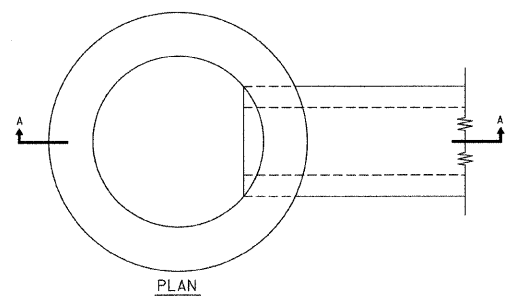
PK NAIL # 3  
N 718598.462  
E 2318265.641  
ELEV. 415.67

Designed:	VILLAGE OF WASHINGTON PARK STREET IMPROVEMENTS	
Drawn:	W.C.	
Checked:	L.T.	
Prepared:	THOMPSON CIVIL, LLC 7017 GLENMORE AVE., SUITE #4 ST. LOUIS, MISSOURI, 63121 PHONE: 314-724-3127	Date: DEC. 2009 Sheet: 7 of 12

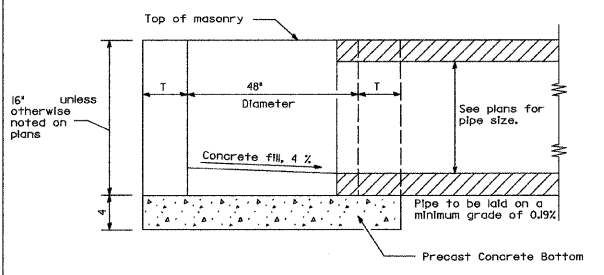
F.A.U. RTE.	SECTION	COUNTY	TOTAL SHEETS	SHEET NO.
9238	09-00022-00-PV	ST. CLAIR	12	8
		ILLINOIS	CONTRACT NO. 97421	



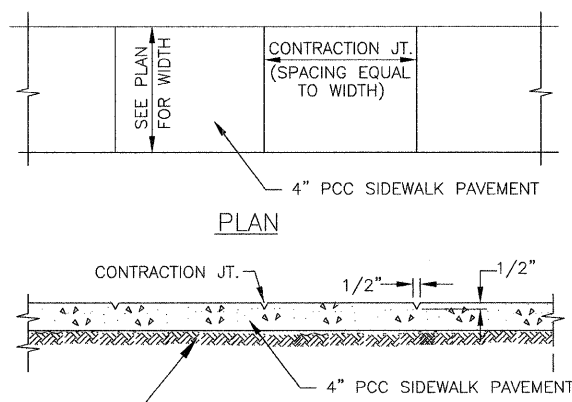
COMMERCIAL & ALLEY ENTRANCE DETAIL  
NOTE: CONC. THICKNESS OF COMMERCIAL & ALLEY ENTRANCE IS 8 INCHES.



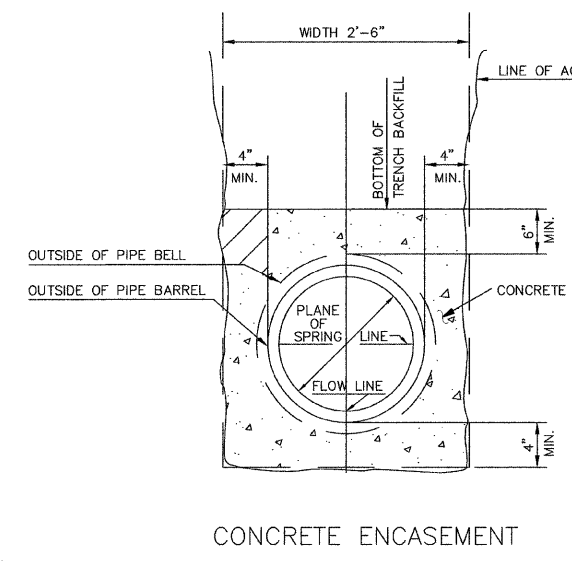
ALTERNATE MATERIALS FOR WALLS	T
BRICK MASONRY	8
CAST-IN-PLACE CONCRETE	6
CONCRETE MASONRY UNIT	5
PRECAST REINFORCED CONCRETE SECTION	3



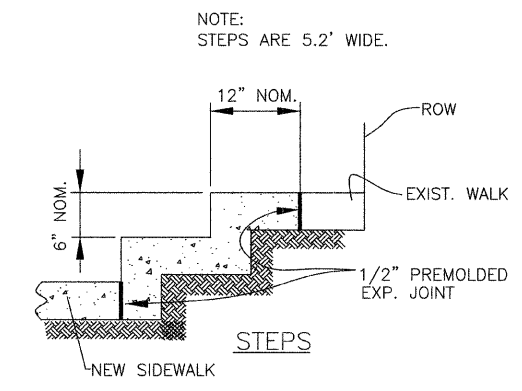
SECTION A-A  
INLETS TYPE A, SPECIAL WITH TYPE 8 GRATE



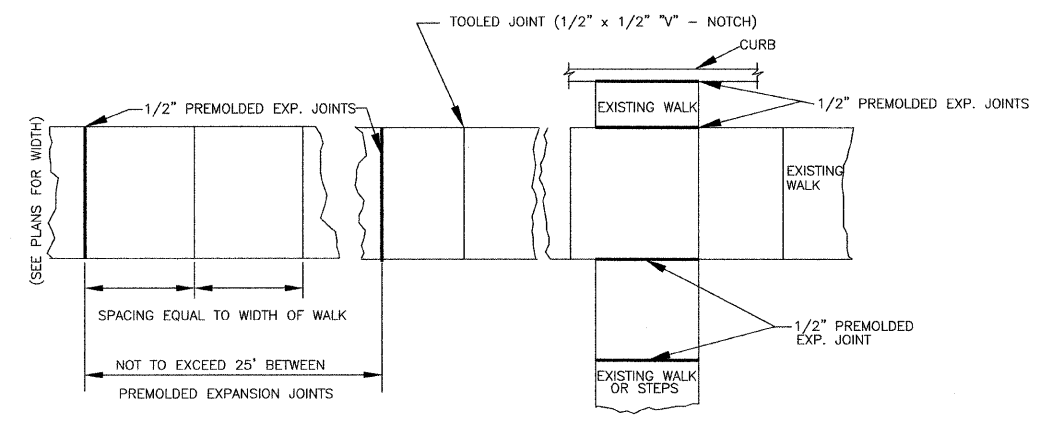
CONCRETE SIDEWALK DETAIL  
N.T.S.



CONCRETE ENCASEMENT



STEPS



CONCRETE SIDEWALK JOINTS  
N.T.S.

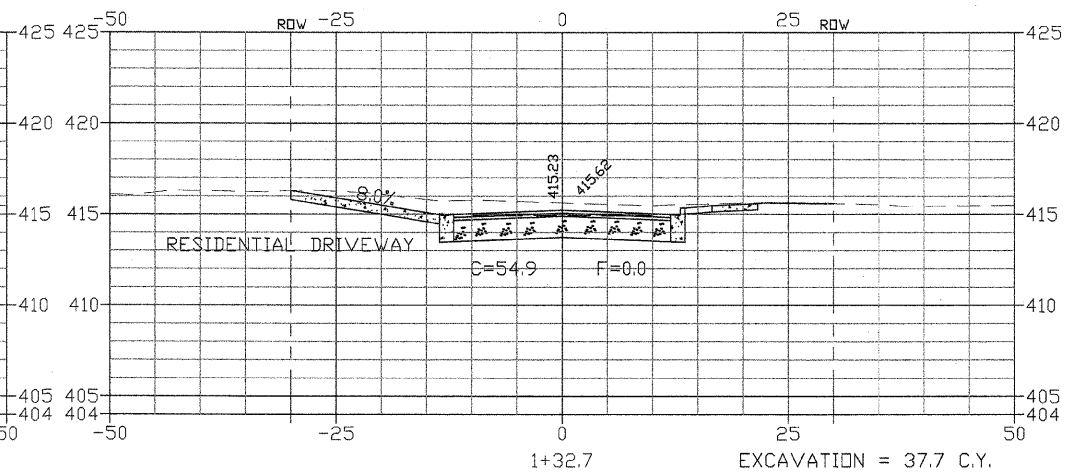
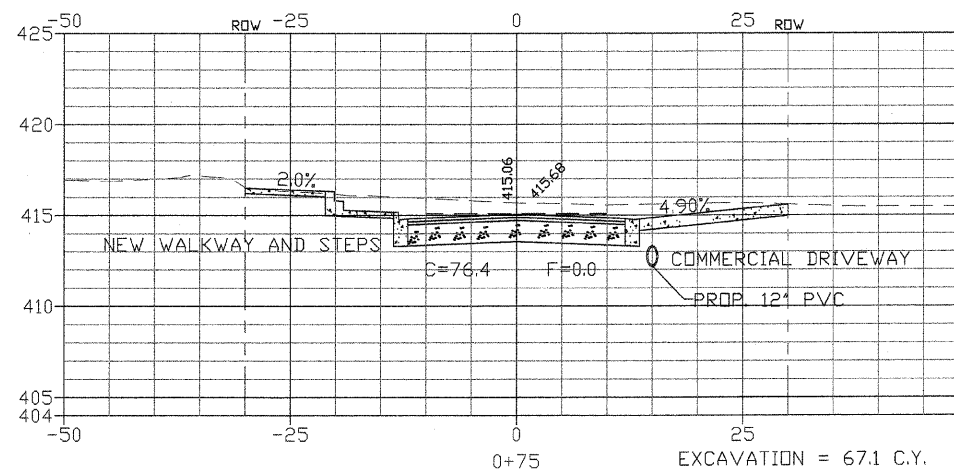
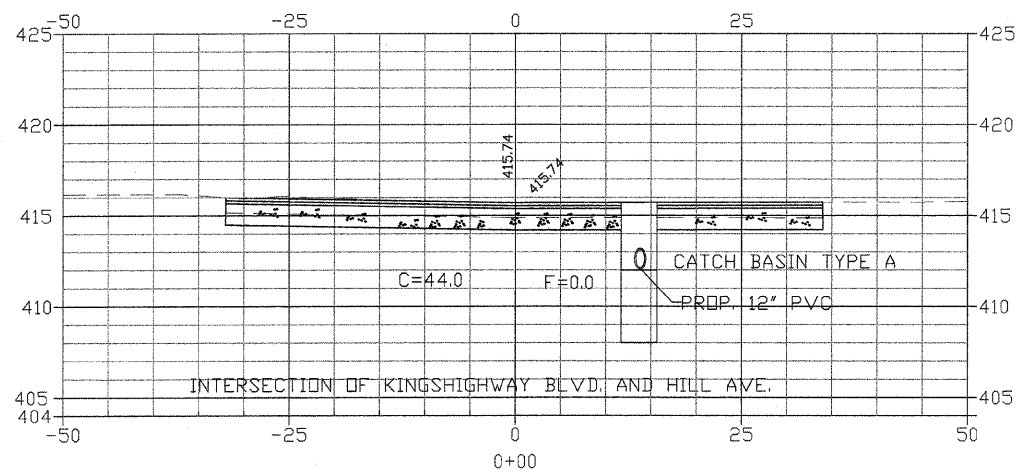
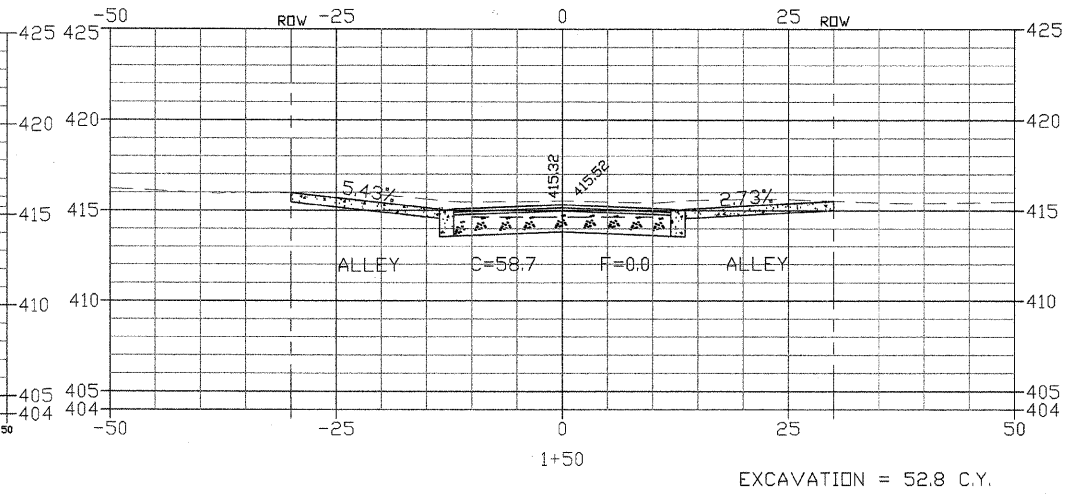
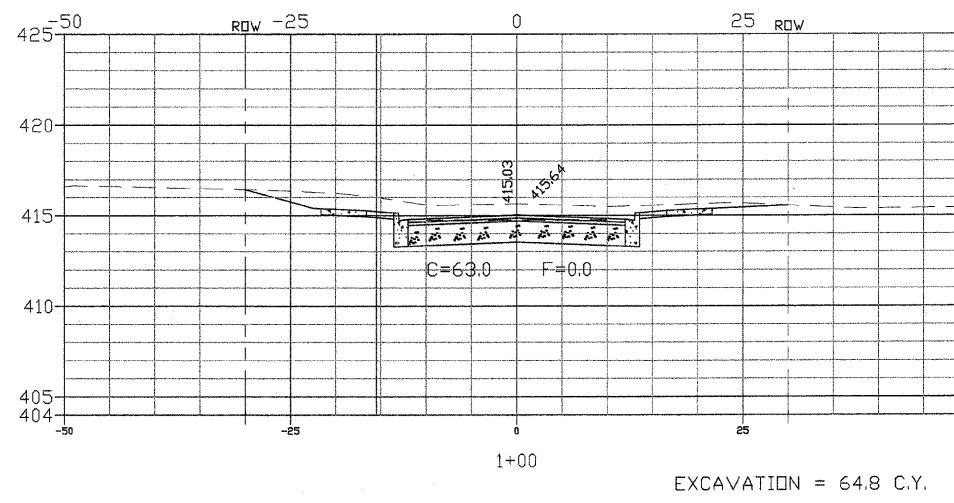
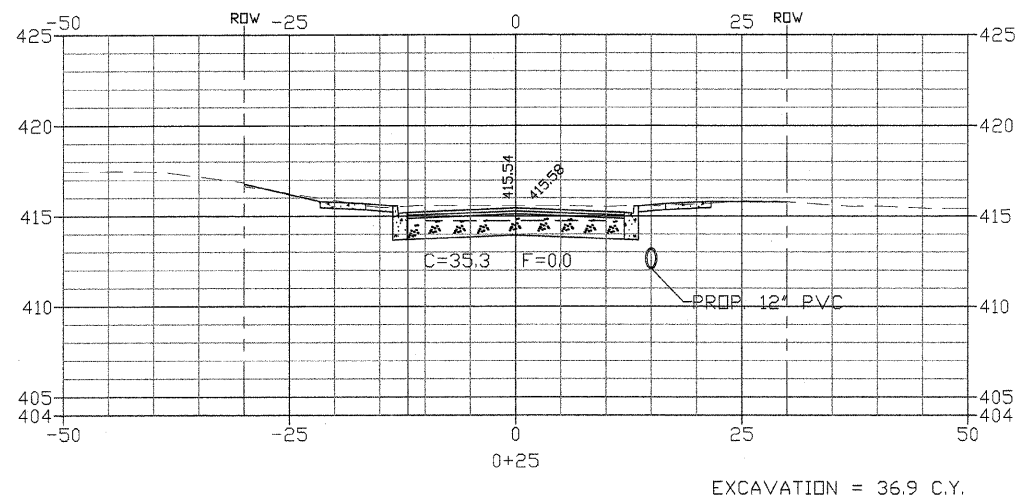
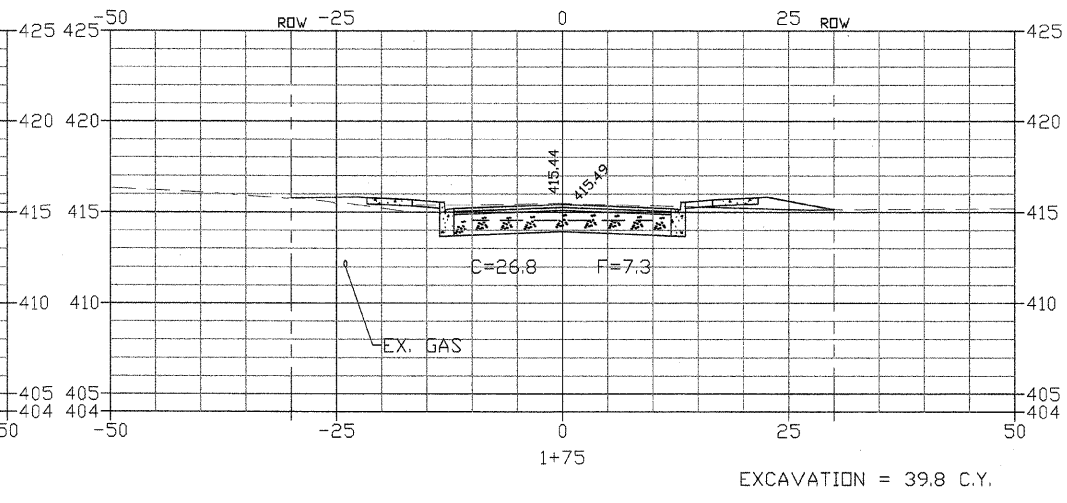
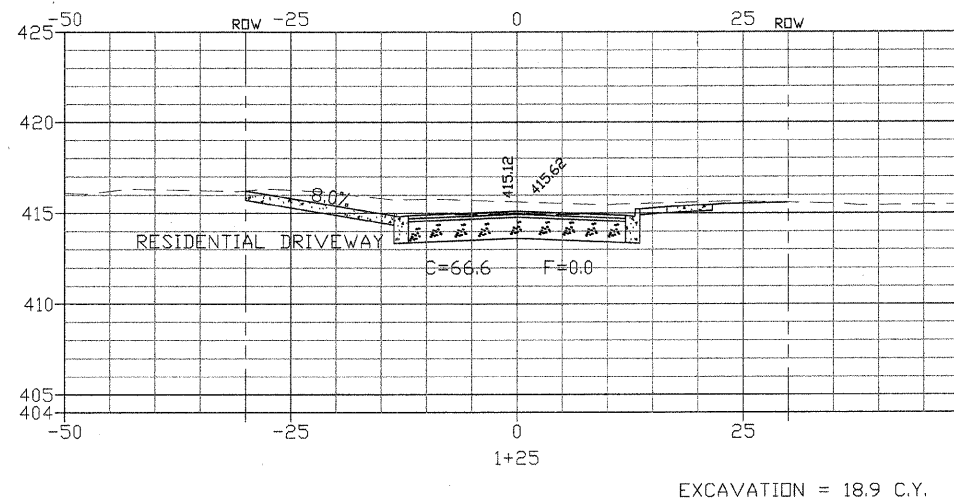
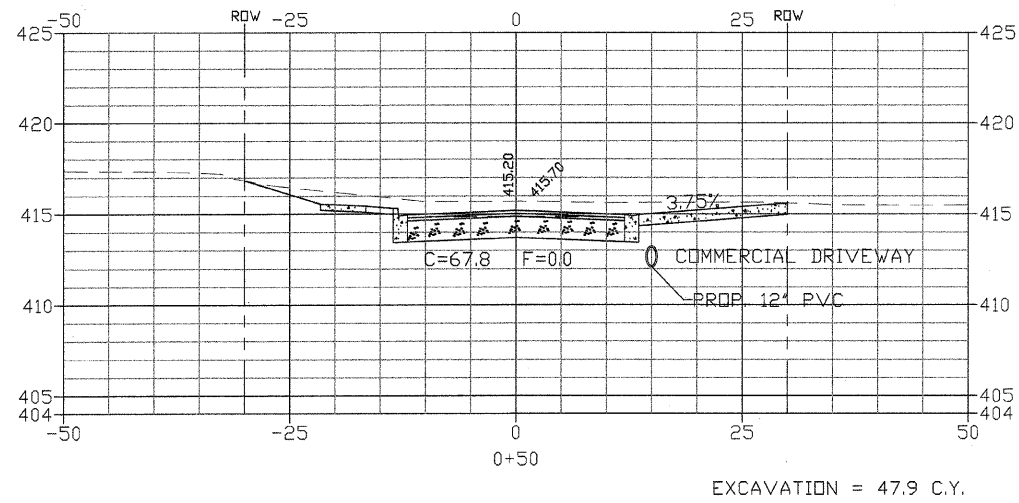
NOTE: MAX. JOINT SPACING TO BE 6 FT EITHER DIRECTION.

Designed:	L.T. VILLAGE OF WASHINGTON PARK STREET IMPROVEMENTS	
Drawn:	B.L.	
Checked:		
Prepared:	W.C. THOMPSON CIVIL, LLC 7017 GLENMORE AVENUE, SUITE 4 ST. LOUIS, MISSOURI, 63121 PHONE: 314-724-3127	
Date:	DEC. 2009	
Sheet:	8	of 12

DETAILS



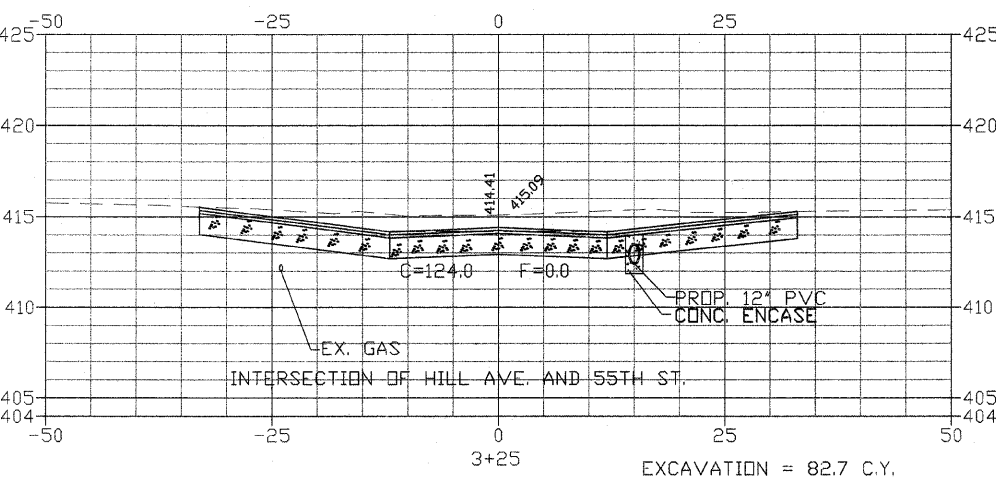
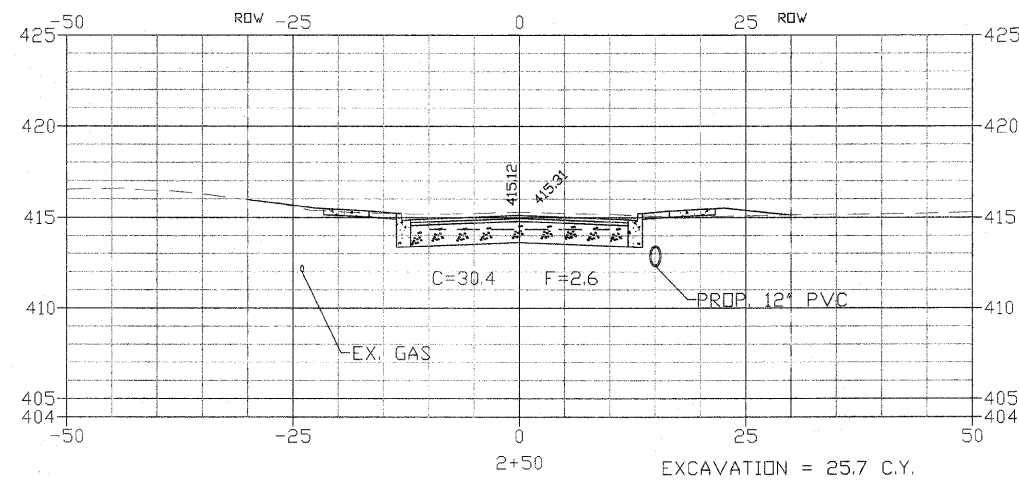
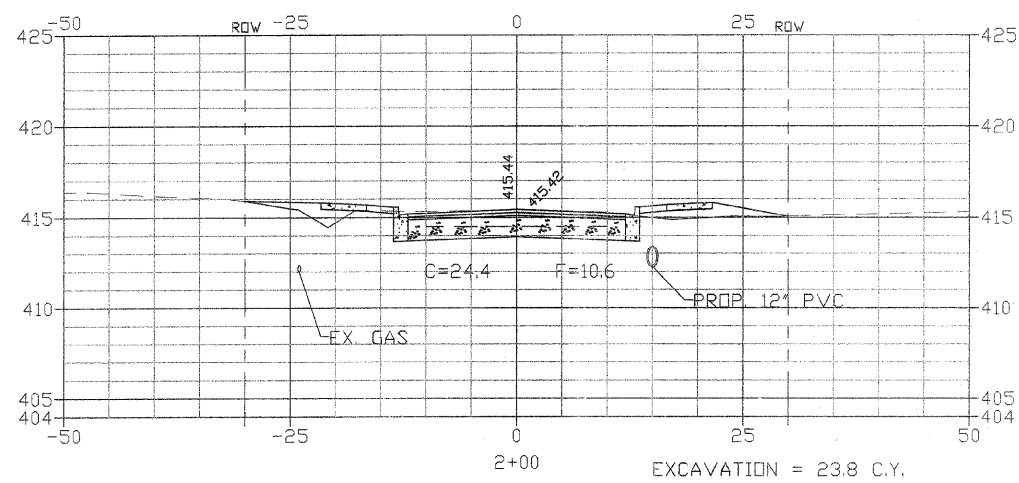
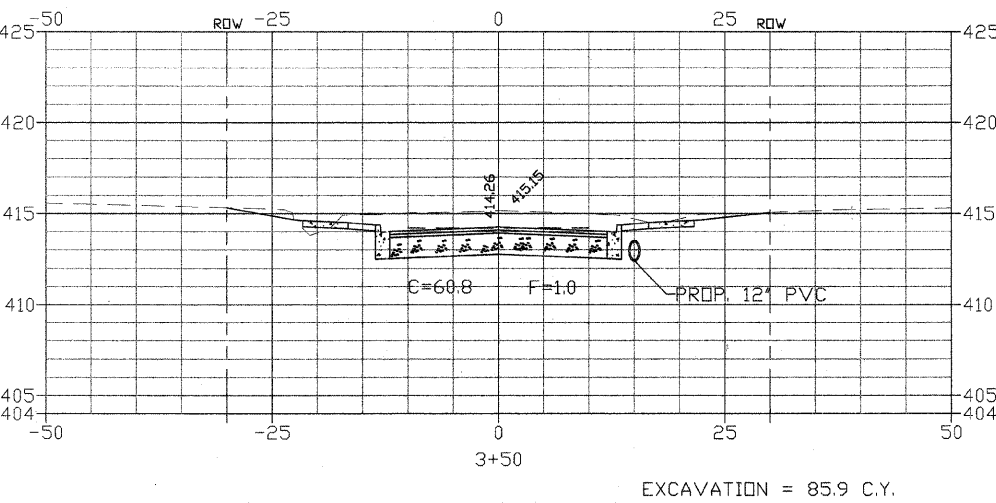
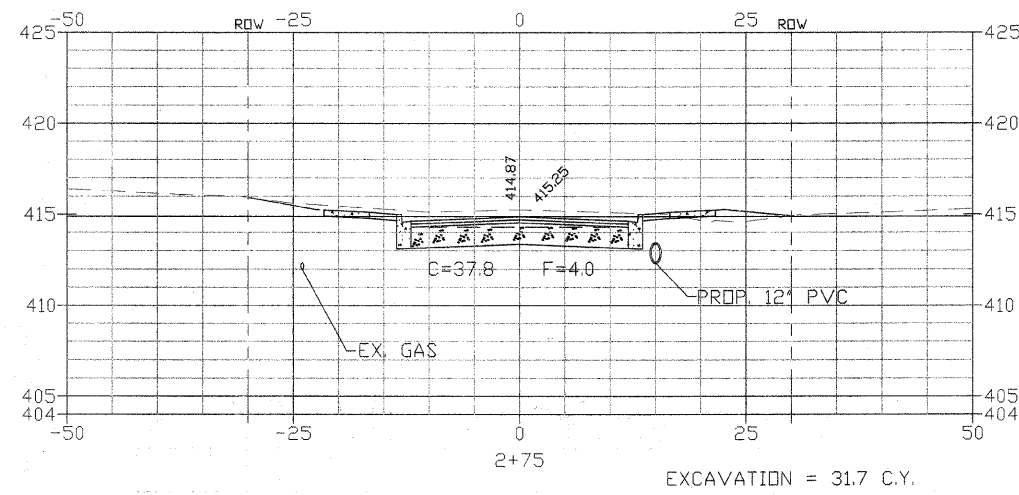
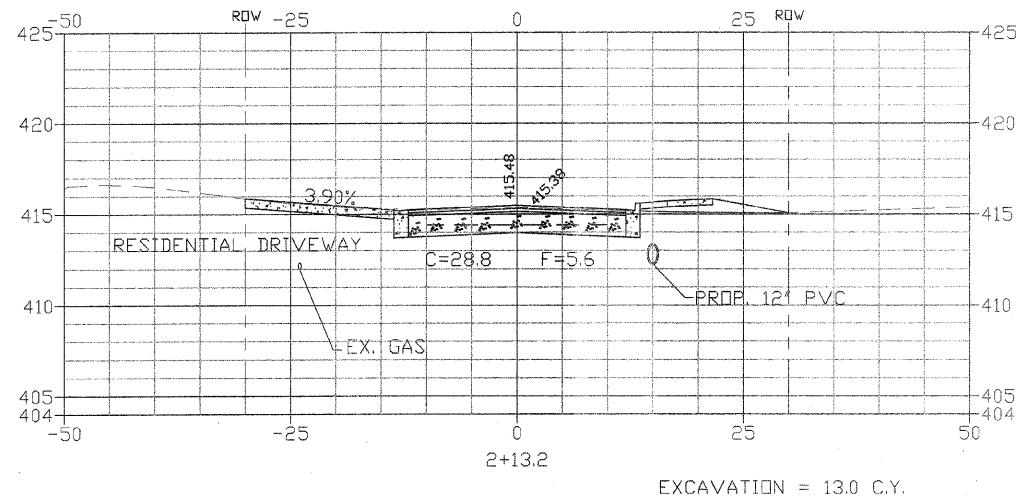
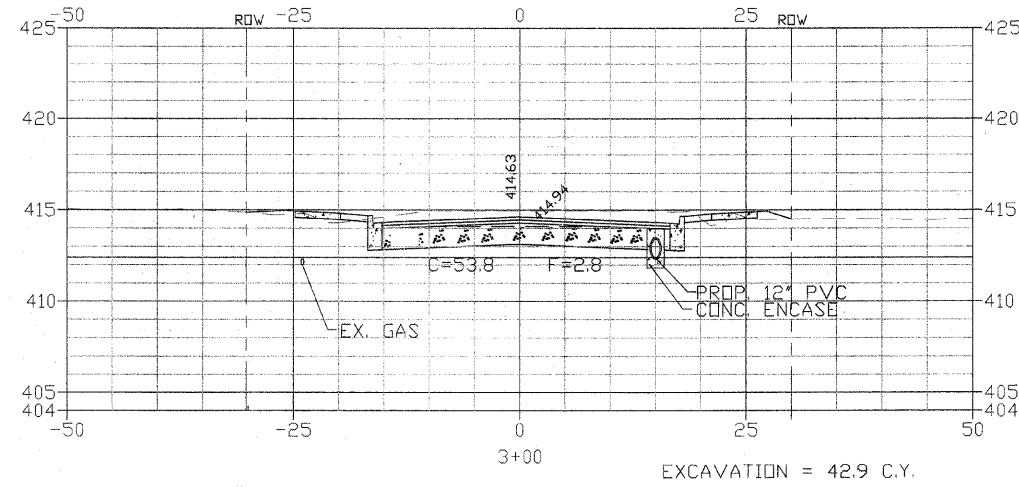
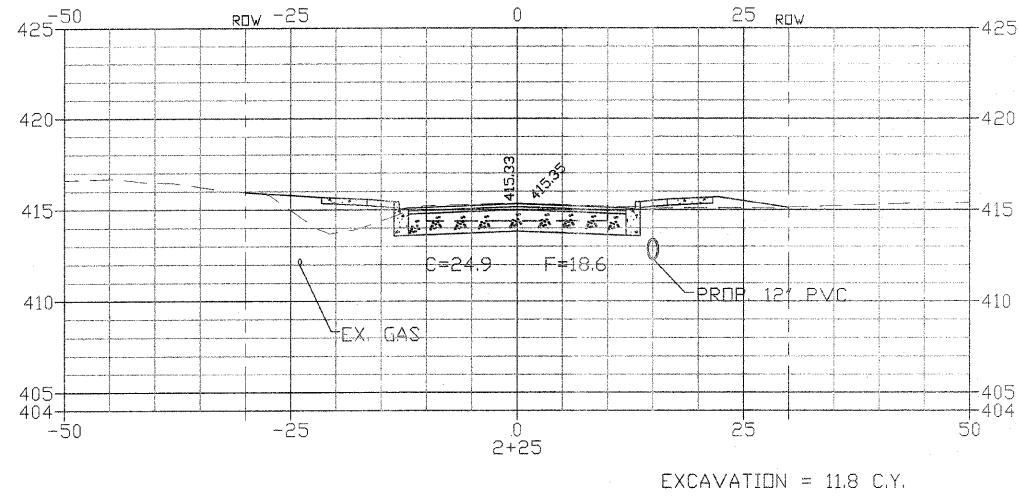
F.A.U. RTE.	SECTION	COUNTY	TOTAL SHEETS	SHEET NO.
9238	09-00022-00-PV	ST. CLAIR	12	9
		ILLINOIS	CONTRACT NO. 97421	



SCALE: HORIZONTAL-1"=10'  
VERTICAL-1"=5'

Designed:	L.T.		VILLAGE OF WASHINGTON PARK STREET IMPROVEMENTS
Drawn:	W.C.		
Checked:	L.T.		CROSS-SECTIONS
Prepared:	THOMPSON CIVIL, LLC 7017 GLENMORE AVE., SUITE #4 ST. LOUIS, MISSOURI, 63121 PHONE: 314-724-3127		Date: DEC. 2009 Sheet: 9 of 12

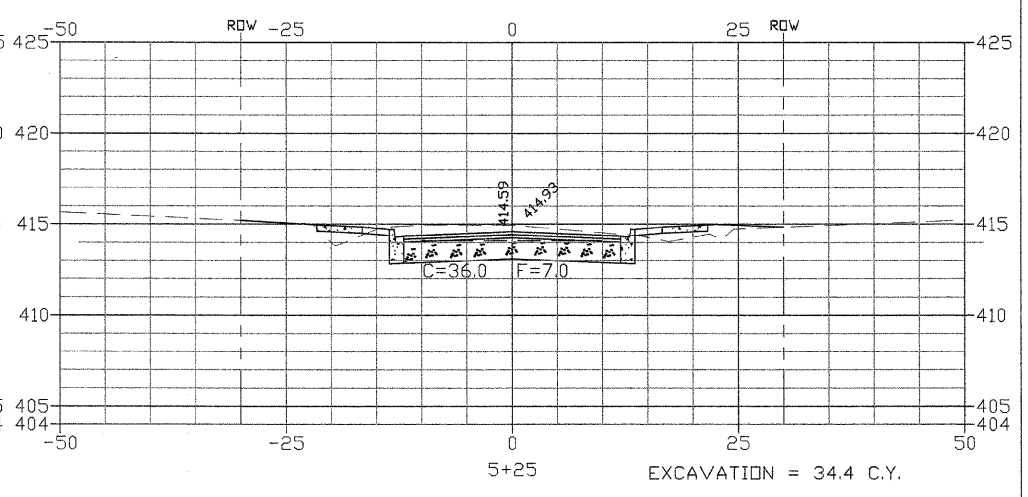
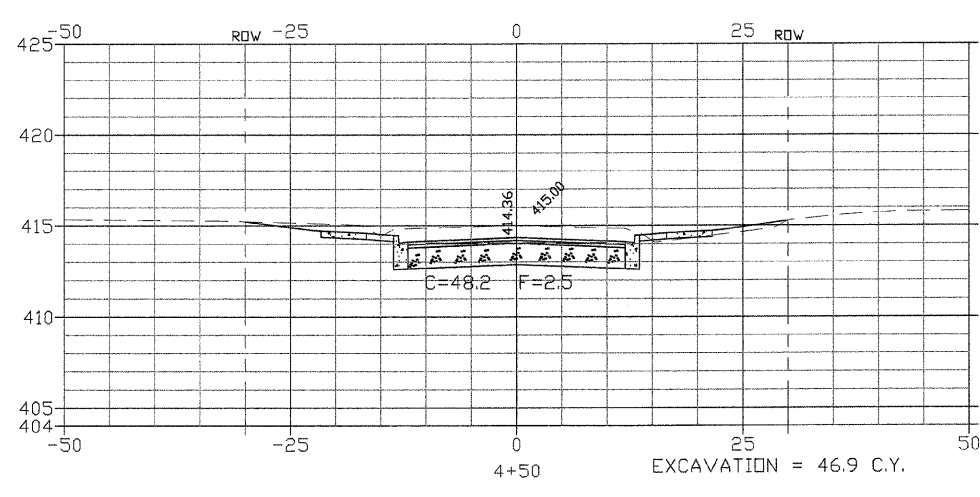
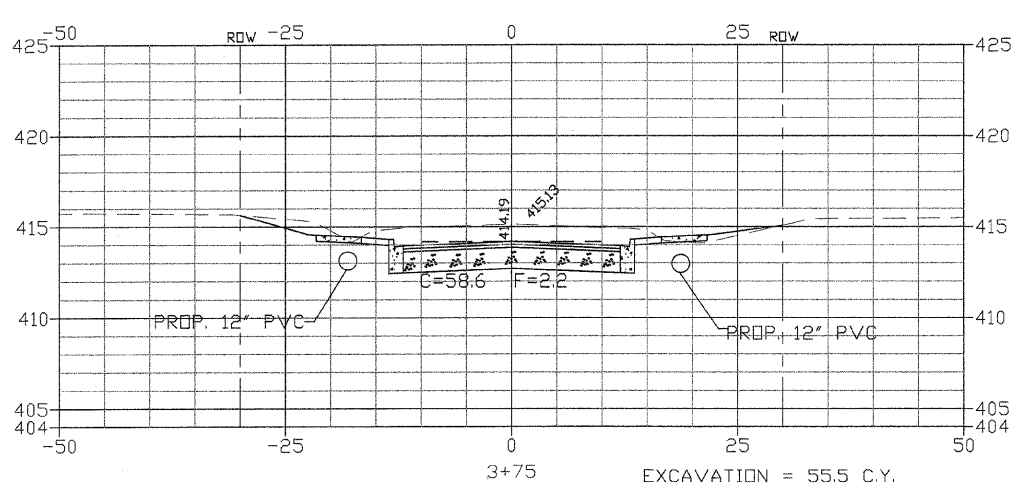
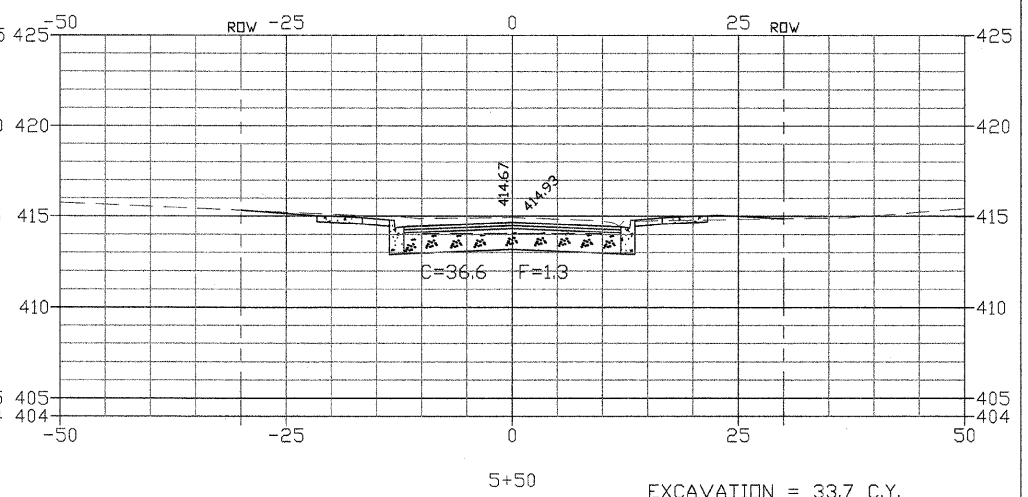
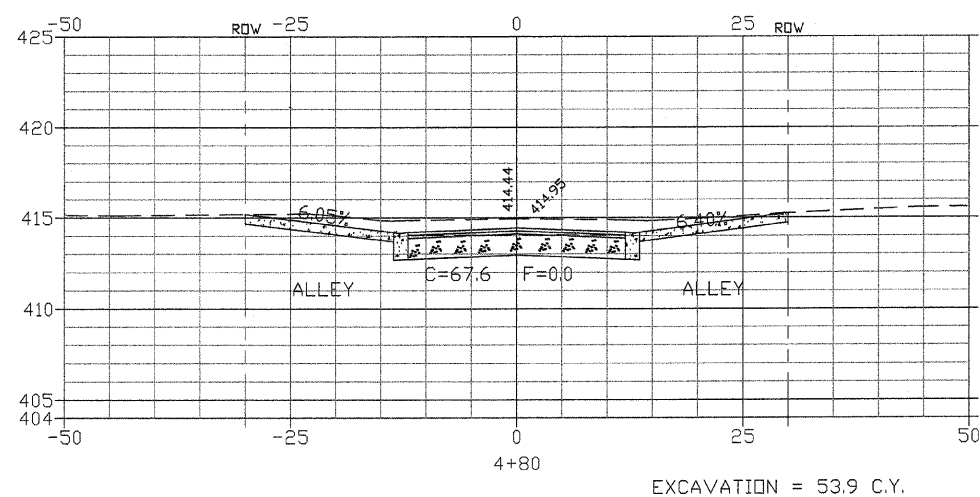
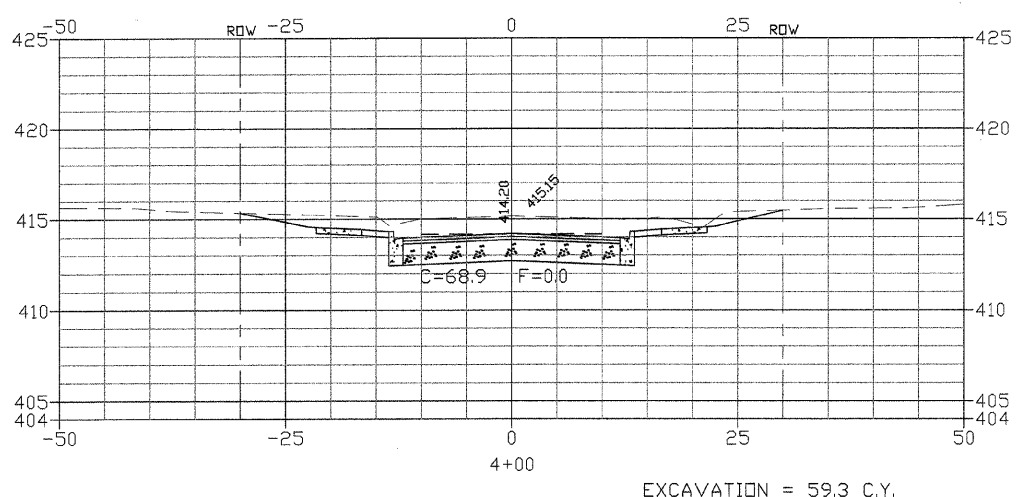
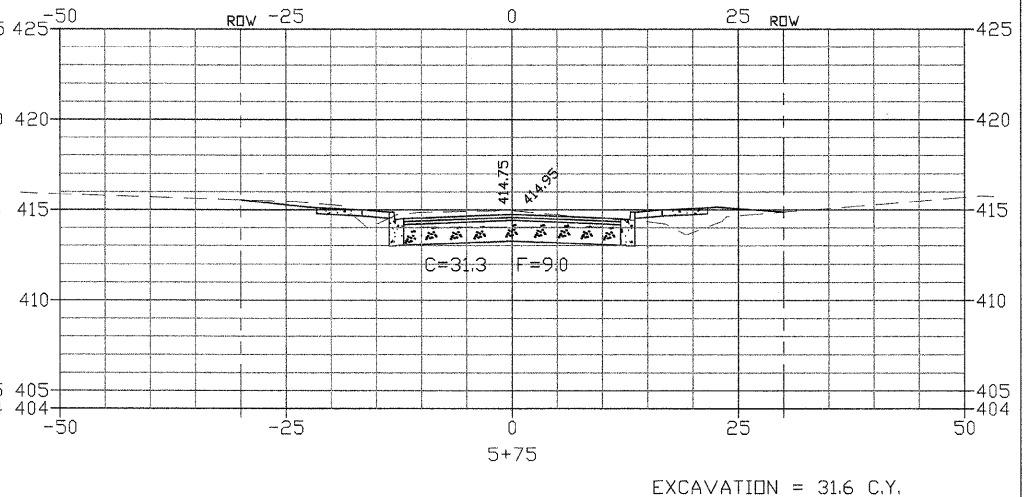
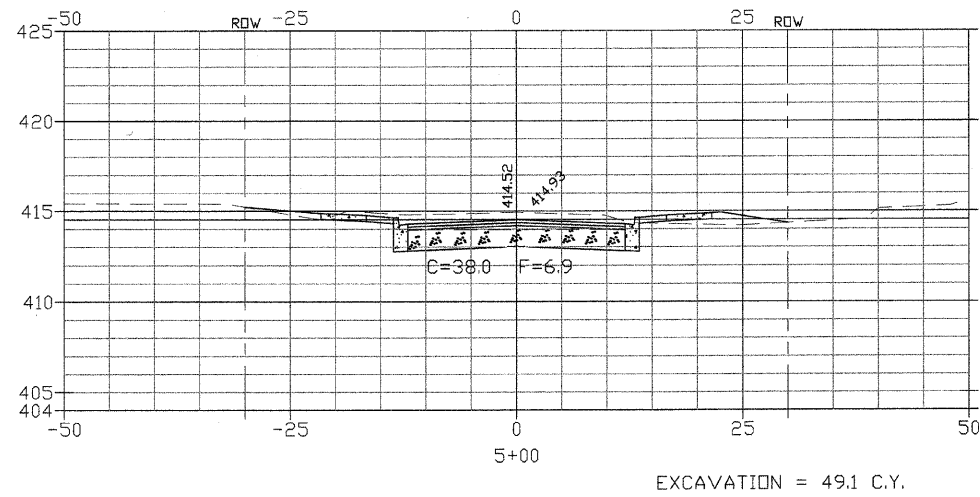
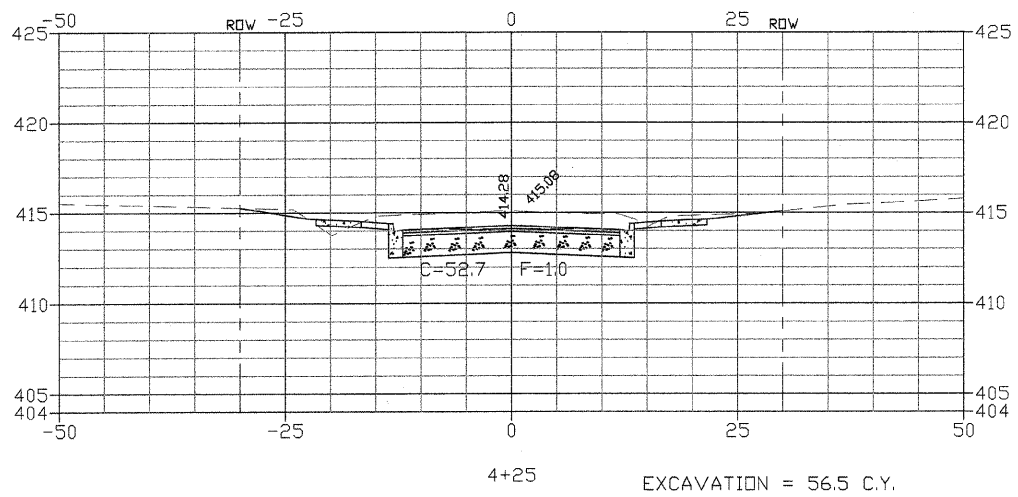
F.A.U. RTE. 9238	SECTION 09-00022-00-PV	COUNTY ST. CLAIR	TOTAL SHEETS 12	SHEET NO. 10
		ILLINOIS	CONTRACT NO. 97421	



SCALE: HORIZONTAL-1"=10'  
VERTICAL-1"=5'

Designed: L.T.	VILLAGE OF WASHINGTON PARK STREET IMPROVEMENTS	
Drawn: W.C.		
Checked: L.T.	CROSS-SECTIONS	
Prepared:	THOMPSON CIVIL, LLC 7017 GLENMORE AVE., SUITE #4 ST. LOUIS, MISSOURI, 63121 PHONE: 314-724-3127	Date: DEC. 2009
		Sheet: 10 of 12

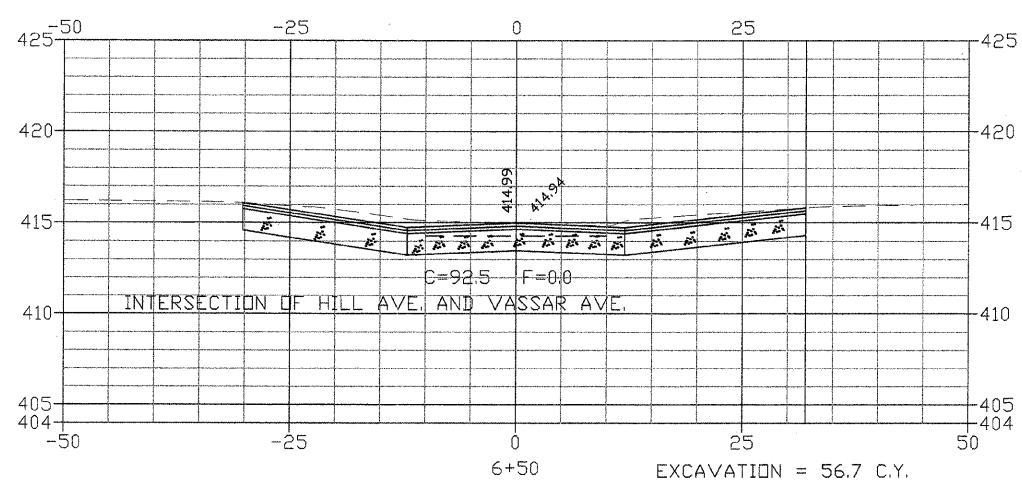
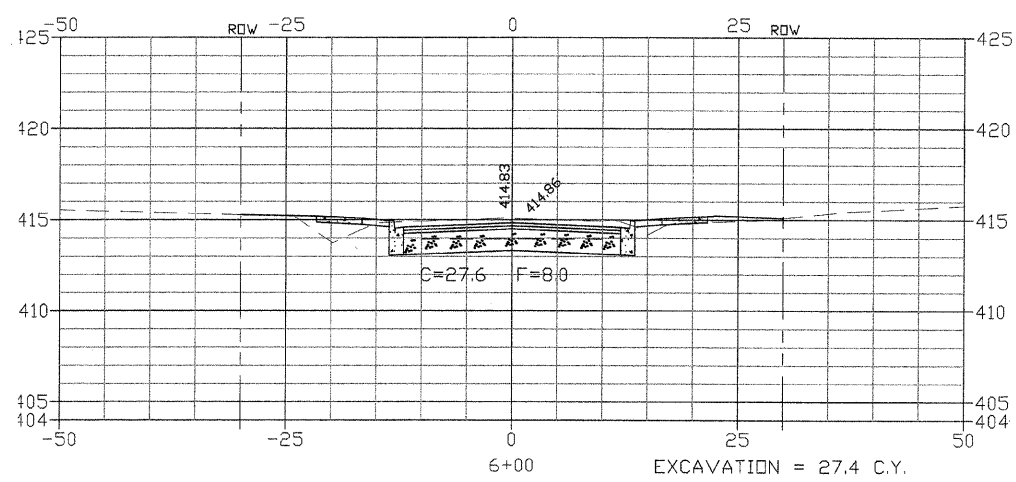
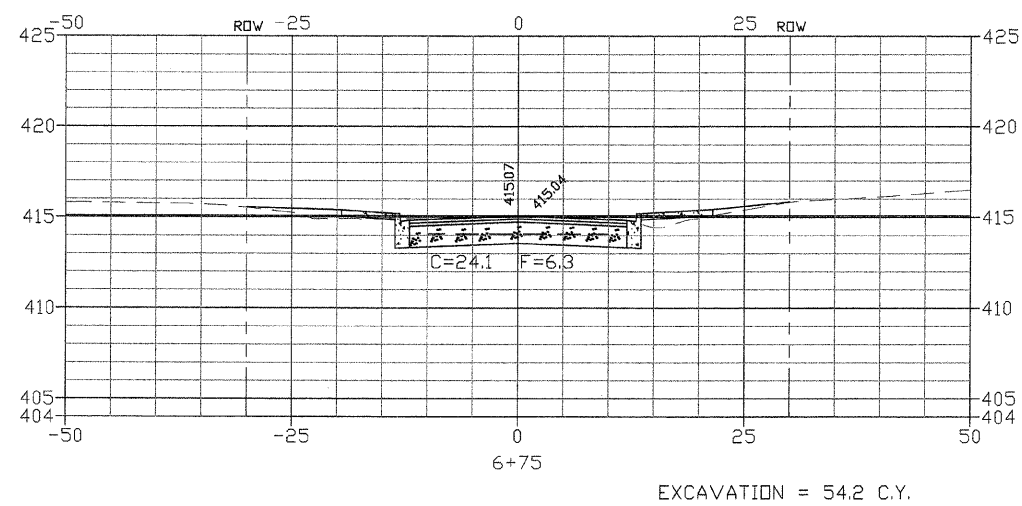
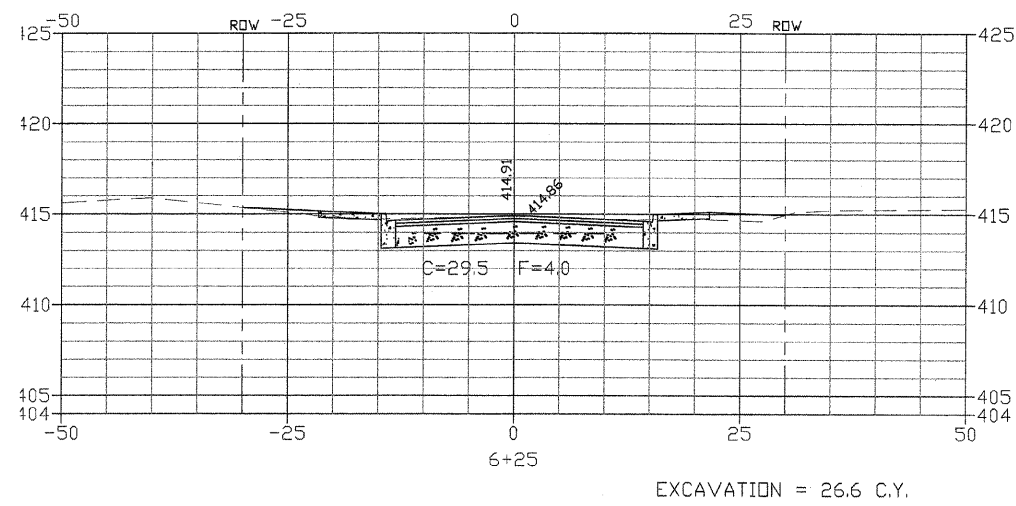
F.A.U. RTE.	SECTION	COUNTY	TOTAL SHEETS	SHEET NO.
9238	09-00022-00-PV	ST. CLAIR	12	11
		ILLINOIS	CONTRACT NO. 97421	



SCALE: HORIZONTAL-1"=10'  
VERTICAL-1"=5'

Designed: L.T.	VILLAGE OF WASHINGTON PARK STREET IMPROVEMENTS	
Drawn: W.C.		
Checked: L.T.	CROSS-SECTIONS	
Prepared: THOMPSON CIVIL, LLC 7017 GLENMORE AVE., SUITE #4 ST. LOUIS, MISSOURI, 63121 PHONE: 314-724-3127	Date: DEC. 2009	Sheet: 11 of 12

F.A.U. RTE. 9238	SECTION 09-00022-00-PV	COUNTY ST. CLAIR ILLINOIS	TOTAL SHEETS 12	SHEET NO. 12
CONTRACT NO. 97421				



SCALE: HORIZONTAL-1"=10'  
VERTICAL-1"=5'

Designed: L.T.	VILLAGE OF WASHINGTON PARK STREET IMPROVEMENTS	
Drawn: W.C.	CROSS-SECTIONS	
Checked: L.T.		
Prepared: THOMPSON CIVIL, LLC 7017 GLENMORE AVE., SUITE #4 ST. LOUIS, MISSOURI, 63121 PHONE: 314-724-3127	Date: DEC. 2009	Sheet: 12 of 12