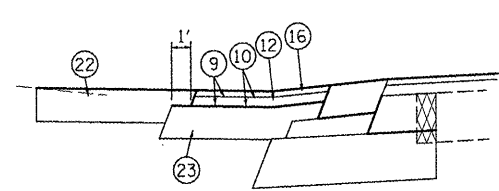


LEGEND

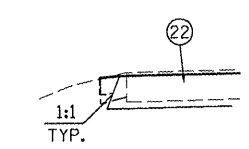
FINAL SURFACING W/ HMA ON ENTRANCE
 FINAL SURFACING W/HMA ON ROADWAY
 FINAL SURFACING W/ AGGREGATE
 PROPOSED DIRECTION OF FLOW (TYPICALLY WILL FOLLOW ROADWAY PROFILE THROUGH ENTRANCE)

* CONTRACTOR SHALL UTILIZE DIMENSIONS SHOWN ON CROSS SECTIONS AT ENTRANCES TO ESTABLISH ENTRANCE SLOPES AND LOCATIONS OF GRADE CHANGES. MOST ENTRANCES HAVE SLOPES NEAR EOP AT 4% TO A POINT WITHIN THE ENTRANCE IN ORDER TO MINIMIZE THE QUANTITY OF SURFACE RUNOFF FROM PROPERTIES VIA ENTRANCES REACHING THE ROADWAY.
 FAILURE ON THE PART OF THE CONTRACTOR TO EFFECT SLOPES SHOWN ON THE CROSS SECTIONS OR CONSULT WITH THE ENGINEER PRIOR TO INITIAL GRADING OF ENTRANCES MAY RESULT IN THE CONTRACTOR HAVING TO REMOVE INSTALLATION.

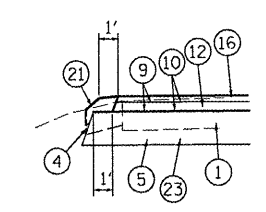
- LEGEND**
- ① REMOVAL AND DISPOSAL OF UNSUITABLE MATERIAL
 - ② PAVEMENT REMOVAL
 - ③ HOT-MIX ASPHALT SURFACE REMOVAL, 2.25" OR - BUTT JOINT
 - ④ TOPSOIL REMOVAL, 6" (PART OF PAY ITEM. SEE EARTHWORK SCHEDULE)
 - ⑤ EARTH EXCAVATION
 - ⑥ EMBANKMENT (NOT A PAY ITEM. EARTH EXCAVATION OR FURNISHED EXCAVATION MATERIAL)
 - ⑦ EMBANKMENT (NOT A PAY ITEM. TOPSOIL, EARTH EXCAV., OR FURNISHED EXCAVATION MATERIAL)
 - ⑧ SUB-BASE GRANULAR MATERIAL (SPECIAL) (TY. C, 12")
 - ⑨ BITUMINOUS MATERIALS (PRIME COAT)
 - ⑩ AGGREGATE (PRIME COAT)
 - ⑪ HOT-MIX ASPHALT BASE COURSE WIDENING
 - ⑫ HOT-MIX ASPHALT BINDER COURSE, IL-19.0, N70
 - ⑬ MIXTURE FOR CRACKS, JOINTS, AND FLANGWAYS
 - ⑭ STRIP REFLECTIVE CRACK CONTROL TREATMENT
 - ⑮ LEVELING BINDER (MACHINE METHOD), N70
 - ⑯ HOT-MIX ASPHALT SURFACE COURSE MIX "D", N70 (1.5")
 - ⑰ SUB-BASE GRANULAR MATERIAL, TYPE C
 - ⑱ HOT-MIX ASPHALT SHOULDERS, 8"
 - ⑲ AGGREGATE SHOULDERS, TYPE B (8")
 - ⑳ STONE DUMPED RIPRAP, CLASS A3 & FILTER FABRIC
 - ㉑ TOPSOIL PLACEMENT, 4" (PART OF PAY ITEM. SEE EARTHWORK SCHEDULE)
 - ㉒ AGGREGATE SURFACE COURSE, TYPE B (8")
 - ㉓ SUB-BASE GRANULAR MATERIAL, TYPE C, 8"



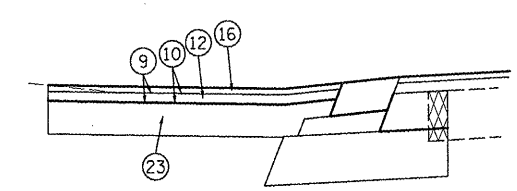
SECTION E-1 - E-1



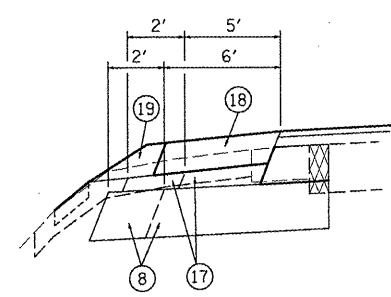
SECTION E-2 - E-2



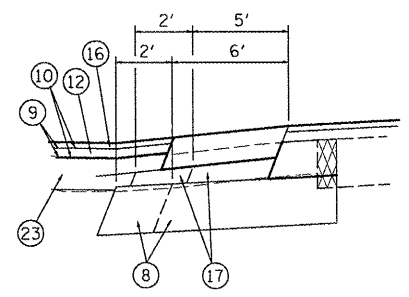
SECTION E-3 - E-3



SECTION E-4 - E-4



SECTION E-5 - E-5



SECTION E-6 - E-6

FILE NAME = EntranceMailboxTurnout_Details_6314.dgn	USER NAME = #USER#	DESIGNED -	REVISED -	STATE OF ILLINOIS DEPARTMENT OF TRANSPORTATION	ENTRANCE AND MAILBOX TURNOUT DETAILS			F.A.I. RTE.	SECTION	COUNTY	TOTAL SHEETS	SHEET NO.
#FILE#		DRAWN -	REVISED -		9833	05-00016-02-WR	BOND	85	18			
HMG JOB NO. 6314.1	PLOT SCALE = #SCALE#	CHECKED -	REVISED -		SCALE: SHEET NO. OF SHEETS STA. TO STA.			CONTRACT NO. 97426				
	PLOT DATE = #DATE#	DATE -	REVISED -		ILLINOIS FED. AID PROJECT							