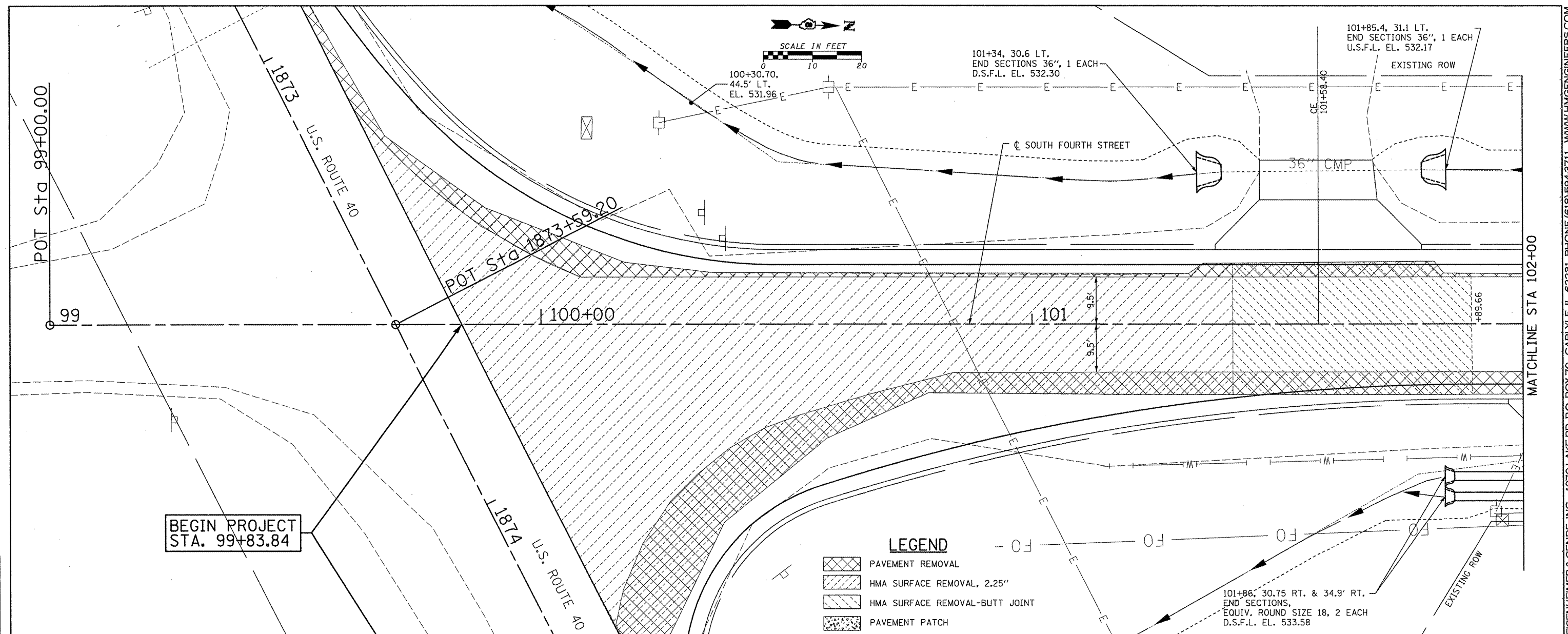


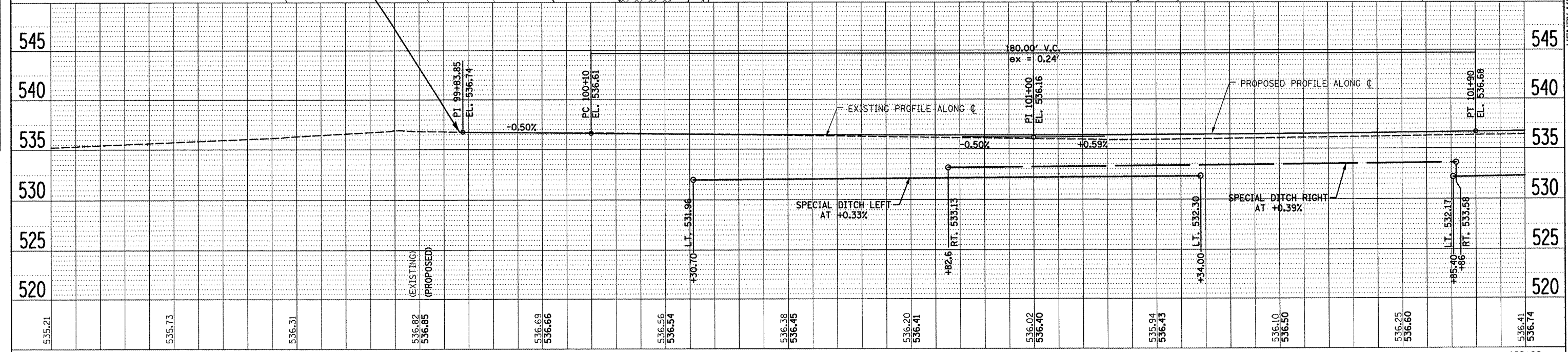
PLAN	SURVEYED	BY	DATE
	PLOTTED		
	CHECKED		
	BY		
	NO.		
	FILE NAME		

PROFILE	SURVEYED	BY	DATE
	PLOTTED		
	CHECKED		
	BY		
	NO.		
	STRUCTURE NOTATION		



BEGIN PROJECT  
STA. 99+83.84

- LEGEND**
- PAVEMENT REMOVAL
  - HMA SURFACE REMOVAL, 2.25"
  - HMA SURFACE REMOVAL-BUTT JOINT
  - PAVEMENT PATCH



99+00	99+50	100+00	100+50	101+00	101+50	102+00
535.21	535.73	536.31	536.82 536.85	536.69 536.66	536.56 536.54	536.38 536.45
536.02 536.40	535.94 536.43	536.10 536.50	536.25 536.60	536.41	536.41	536.74

STATE OF ILLINOIS  
DEPARTMENT OF TRANSPORTATION

CULVERT & REMOVAL  
PLAN & PROFILE - FOURTH STREET

F.A.U. RTE.	SECTION	COUNTY	TOTAL SHEETS	SHEET NO.
9833	05-00016-02-WR	BOND	85	37
CONTRACT NO. 97426				

SCALE: SHEET NO. OF SHEETS STA. TO STA.

HENRY, MEISENHEIMER & GENDE, INC., 1070 LAKE RD. P.O. BOX 70, CARLYLE, IL. 62231 PHONE (618)594-3711 WWW.HMENGINEERS.COM