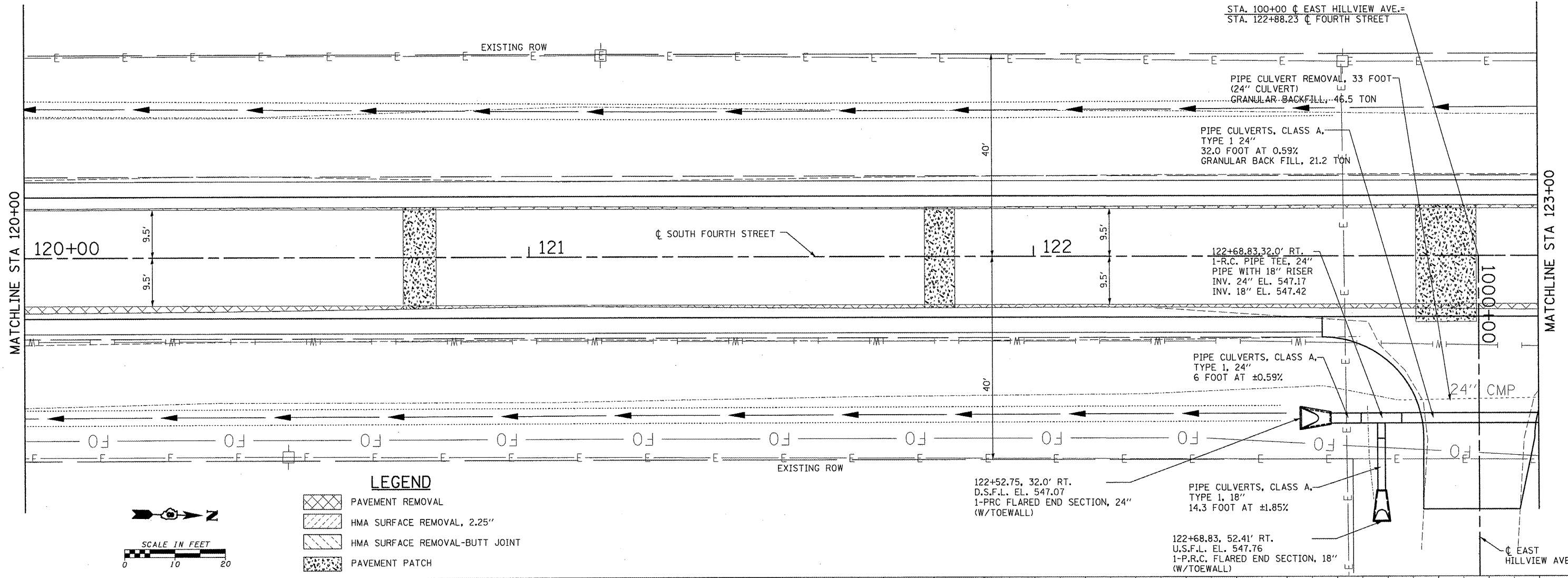


PLAN	SURVEYED	BY	DATE
	NOTED		
	ALIGNED		
	CHECKED		
	BY		
	NO. OF PAGES		
	CHECKED		
	DATE		
	BY		
	NO.		

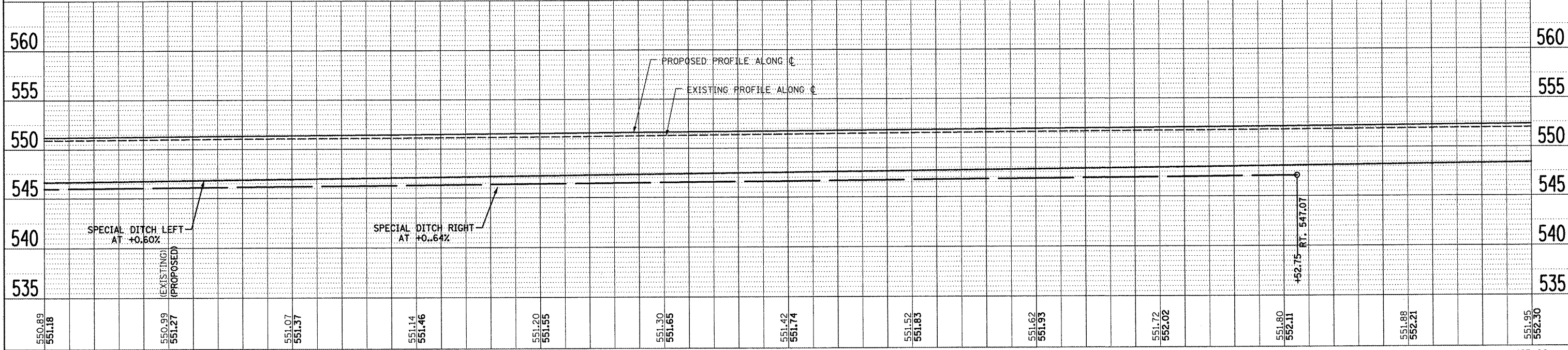
PROFILE	SURVEYED	BY	DATE
	NOTED		
	CHECKED		
	BY		
	NO. OF PAGES		
	CHECKED		
	DATE		
	BY		
	NO.		



LEGEND

- PAVEMENT REMOVAL
- HMA SURFACE REMOVAL, 2.25"
- HMA SURFACE REMOVAL-BUTT JOINT
- PAVEMENT PATCH

SCALE IN FEET
0 10 20



120+00	120+50	121+00	121+50	122+00	122+50	123+00
550.89 551.18	550.99 551.27	551.07 551.37	551.14 551.46	551.20 551.55	551.30 551.65	551.42 551.74
551.52 551.83	551.62 551.93	551.72 552.02	551.80 552.11	551.88 552.21	551.95 552.30	
DESIGNED - CRW	REVISOR -	DESIGNED - CRW	REVISOR -	DESIGNED - CRW	REVISOR -	DESIGNED - CRW
DRAWN - EDW	REVISOR -	DRAWN - EDW	REVISOR -	DRAWN - EDW	REVISOR -	DRAWN - EDW
CHECKED -	REVISOR -	CHECKED -	REVISOR -	CHECKED -	REVISOR -	CHECKED -
DATE -	REVISOR -	DATE -	REVISOR -	DATE -	REVISOR -	DATE -

STATE OF ILLINOIS
DEPARTMENT OF TRANSPORTATION

CULVERT & REMOVAL
PLAN & PROFILE - FOURTH STREET

F.A.U. RTE.	SECTION	COUNTY	TOTAL SHEETS	SHEET NO.
9833	05-00016-02-WR	BOND	85	44
CONTRACT NO. 97426				
ILLINOIS FED. AID PROJECT				

HENRY, MEISENHEIMER & GENDE, INC., 1070 LAKE RD. P.O. BOX 70, CARLYLE, ILL. 62231 PHONE (618) 594-9711 WWW.HMENGINEERS.COM