

STATE OF ILLINOIS
DEPARTMENT OF TRANSPORTATION
DIVISION OF HIGHWAYS

PROPOSED LOCAL AGENCY
FEDERAL-AID SECONDARY PROJECT

ROUTE	SECTION	COUNTY	TOTAL SHEETS	SHEET NO.
FAS 789	09-00132-00-RS	MARION	3	1

CONTRACT NO. 97438

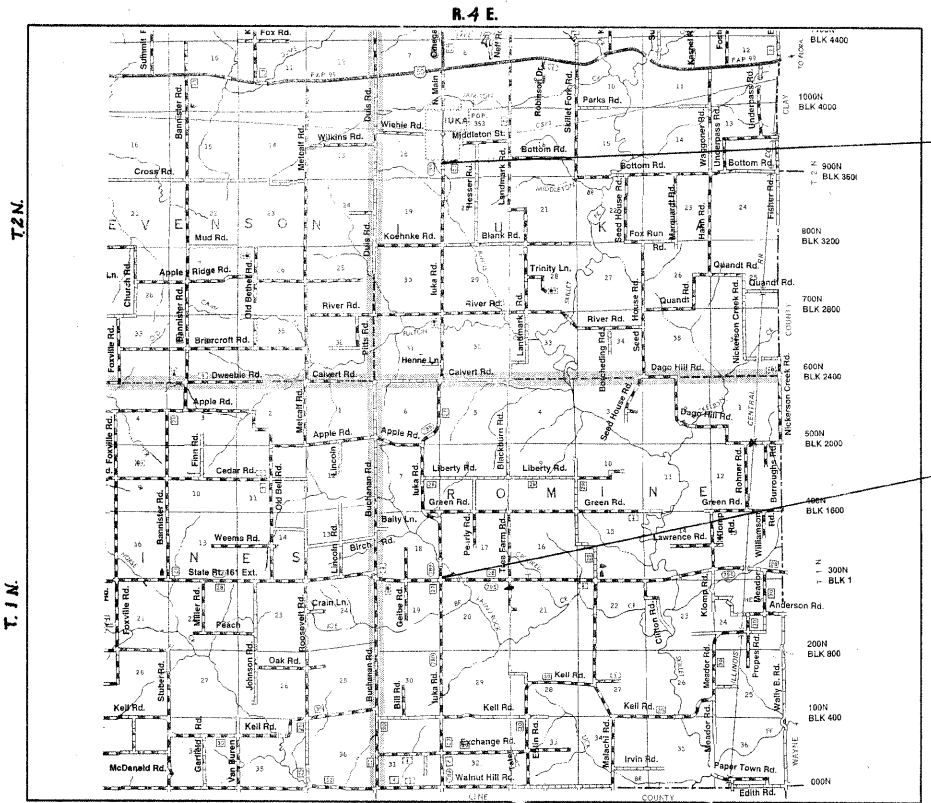
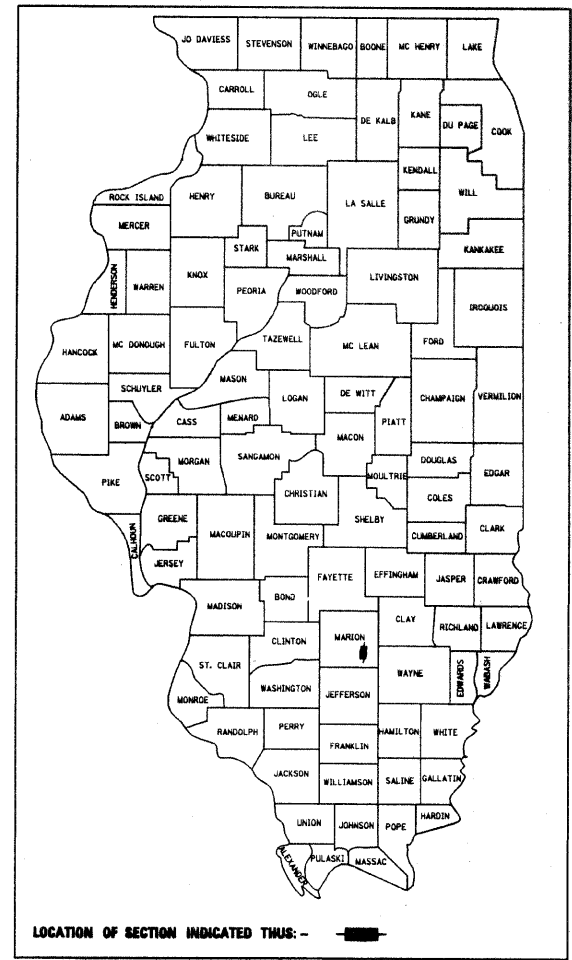
INDEX OF SHEETS

COVER SHEET	1
SUMMARY OF QUANTITIES, GENERAL NOTES, UTILITIES, AND TYPICAL SECTIONS	2
SCHEDULES	3

STANDARDS

- 000001-05 STANDARD SYMBOLS, ABBREVIATIONS AND PATTERNS
- 442201-03 CLASS C AND D PATCHES
- 701201-03 LANE CLOSURE, 2L, 2W, DAY ONLY, FOR SPEEDS > 45 MPH
- 701301-03 LANE CLOSURE, 2L, 2W, SHORT TIME OPERATIONS
- 701306-02 LANE CLOSURE, 2L, 2W, SLOW MOVING OPERATIONS DAY ONLY FOR SPEEDS > 45 MPH
- 701311-03 LANE CLOSURE, 2L, 2W, SLOW MOVING OPERATIONS DAY ONLY
- 701901-01 TRAFFIC CONTROL DEVICES
- 780001-02 TYPICAL PAVEMENT MARKINGS

ROUTE FAS 789
SECTION 09-00132-00-RS
PROJECT RS-0789(114)
MARION COUNTY
C-98-324-10
CH 27, IUKA ROAD

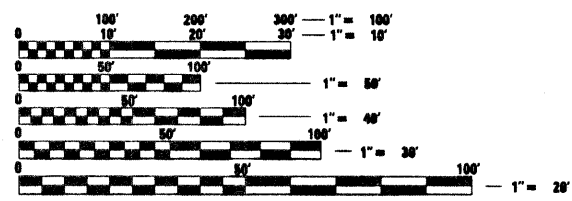


END
STA. 342+00

BEGIN
STA. 0+00

LOCATION MAP

APPROXIMATE SCALE - 1"=1 MILE
GROSS LENGTH = 34,200 FOOT = 6.477 MILES
NET LENGTH = 34,200 FOOT = 6.477 MILES



FULL SIZE PLANS HAVE BEEN PREPARED USING STANDARD ENGINEERING SCALES. REDUCED SIZED PLANS WILL NOT CONFORM TO STANDARD SCALES. IN MAKING MEASUREMENTS ON REDUCED PLANS, THE ABOVE SCALES MAY BE USED.

J.U.L.I.E.
JOINT UTILITY LOCATION INFORMATION FOR EXCAVATION
1-800-892-0123

FUNCTIONAL CLASSIFICATION: RURAL MAJOR COLLECTOR
ADT 625

THESE PLANS WERE PREPARED BY ME OR A FULL-TIME MEMBER OF MY STAFF UNDER MY PERSONAL SUPERVISION



Jerry C. Jamieson
COUNTY ENGINEER, MARION COUNTY
ILLINOIS LICENSED PROFESSIONAL ENGINEER
NO. 052-031357
LICENSE EXPIRES 11/30/2011

STATE OF ILLINOIS
DEPARTMENT OF TRANSPORTATION
DIVISION OF HIGHWAYS

APPROVED 02-19-2010
Jerry C. Jamieson
COUNTY ENGINEER

PASSED March 3, 2010
Zora St. Ludwig
DISTRICT EIGHT ENGINEER OF LOCAL ROADS & STREETS

RELEASED FOR BID
BASED ON LIMITED REVIEW
March 3, 2010
Mary C. Jamieson
DEPUTY DIRECTOR OF HIGHWAYS
REGION FIVE ENGINEER