

GENERAL NOTES:

THIS SECTION SHALL BE CONSTRUCTED IN ACCORDANCE WITH THE PLANS, SPECIAL PROVISIONS AND "STANDARD SPECIFICATIONS FOR ROAD AND BRIDGE CONSTRUCTION", ADOPTED JANUARY 1, 2007.

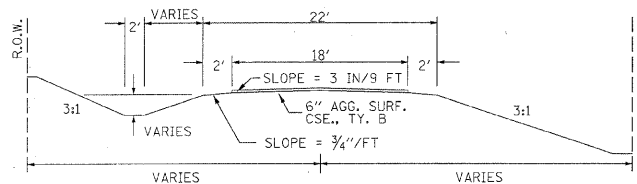
THE WORK INVOLVED ON THIS SECTION CONSISTS OF THE REMOVAL OF THE EXISTING STRUCTURE, THE CONSTRUCTION OF A 50 FOOT LONG SINGLE SPAN PRECAST, PRESTRESSED CONCRETE DECK BEAM BRIDGE, EARTH APPROACHES, AGGREGATE SURFACE COURSE AND OTHER MISCELLANEOUS ITEMS NECESSARY TO COMPLETE THIS SECTION.

ALL ELEVATIONS ARE BASED ON U.S.G.S. MEAN SEA LEVEL DATUM.

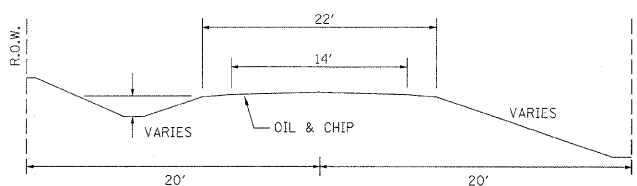
IT SHALL BE THE CONTRACTOR'S RESPONSIBILITY TO CONTACT ALL THE UTILITIES, AFFECTING THE PROJECT, PRIOR TO CONSTRUCTION.

TANK CARS SHALL REMAIN THE PROPERTY OF THE TOWNSHIP.

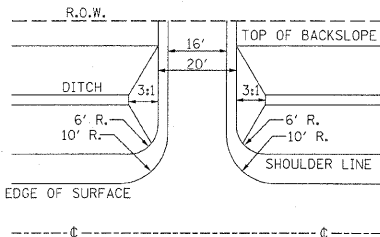
TYPICAL CROSS SECTION PROPOSED



TYPICAL CROSS SECTION EXISTING



PRIVATE ENTRANCE DETAIL



NOTE: CONSTRUCT SPECIAL DITCH

STA 2+25 TO STA 2+80 LT
STA 2+25 TO STA 4+10 RT
STA 5+18 TO STA 8+00 LT
STA 6+50 TO STA 8+00 RT

NOTE: CONSTRUCT STONE RIPRAP DITCH

STA 4+34 TO STA 4+54 RT (0.62 TON/LIN FT)
STA 5+18 TO STA 5+50 LT (0.62 TON/LIN FT)
32 TON STONE RIPRAP DITCH ALLOWED IN PROPOSAL.
SEE STONE RIPRAP DITCH DETAIL.

NOTE: TRAFFIC BARRIER TERMINAL 5A

STA 4+57.84 TO STA 4+71.09 LT

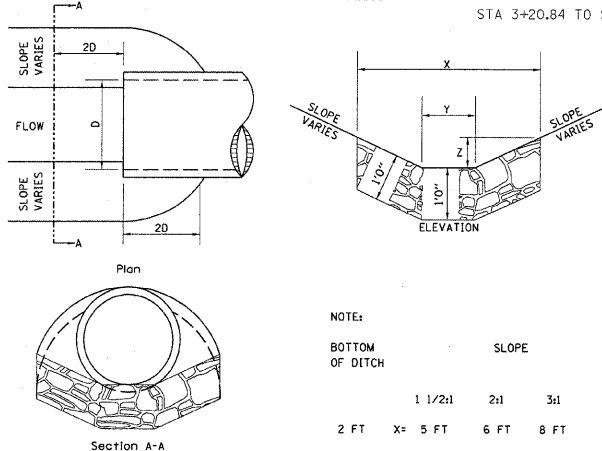
NOTE: STEEL PLATE BEAM GUARDRAIL TYPE B

STA 3+45.84 TO STA 4+57.84 LT

NOTE: TRAFFIC BARRIER TERMINAL TYPE 1

STA 3+20.84 TO STA 3+45.84 LT

STONE RIPRAP DITCH DESIGN



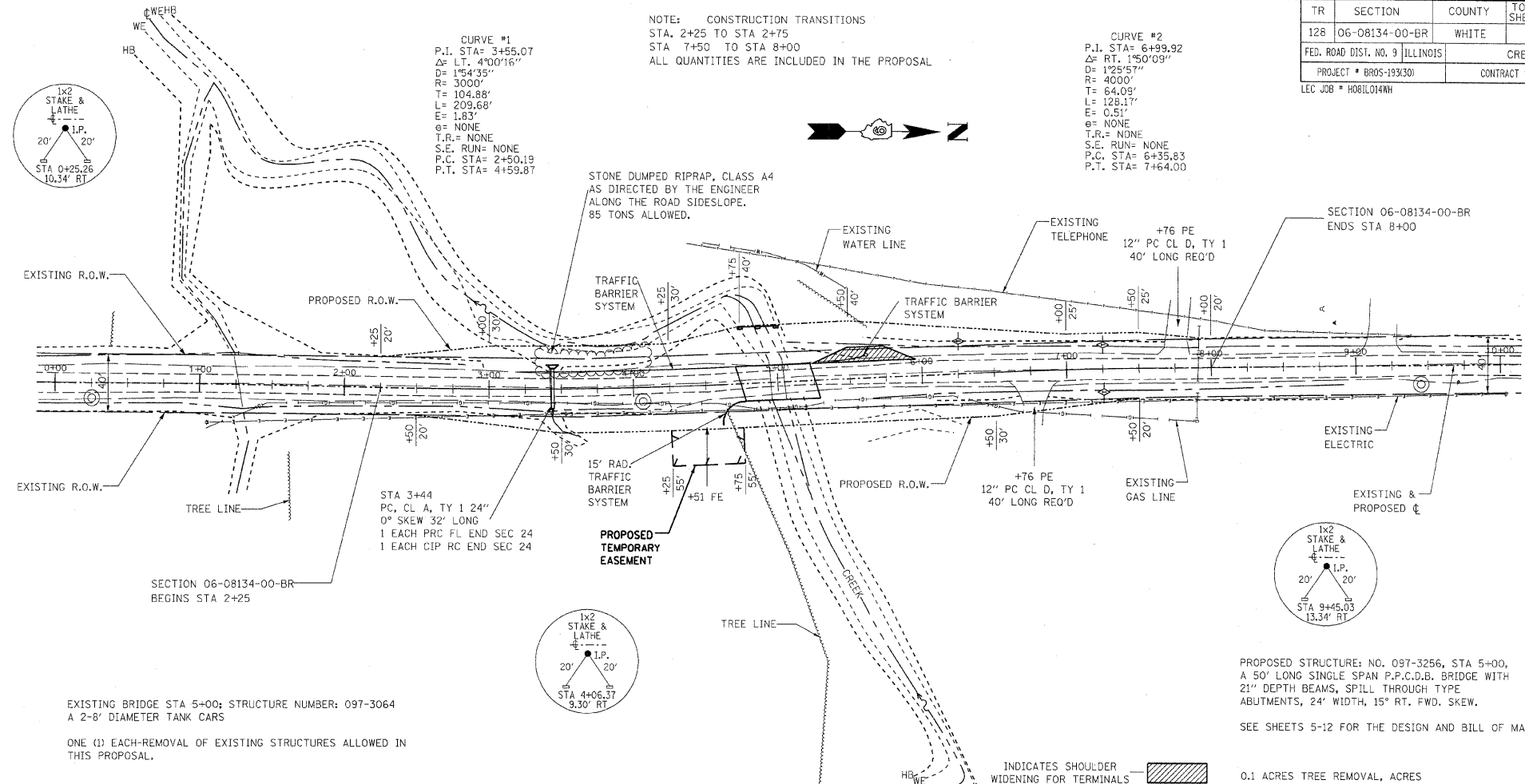
NOTE:

BOTTOM OF DITCH	SLOPE		
	1 1/2:1	2:1	3:1
2 FT	X = 5 FT	6 FT	8 FT
	Y = 2 FT	2 FT	2 FT
	Z = 1 FT	1 FT	1 FT
	0.40	0.48	0.62
	TON/LIN. FT		

NOTE: FOR PLACEMENT, QUALITY GRADATION AND OTHER MISCELLANEOUS REQUIREMENTS FOR STONE RIPRAP DITCH-SEE SPECIAL PROVISIONS.

UTILITIES:

- J.U.L.I.E. 1-800-892-0123
- GALLATIN-WHITE WATER 1-618-962-3265
- VERIZON 1-618-395-6189
- WAYNE-WHITE ELECTRIC CO-OP 1-618-842-2196
- CONSUMERS GAS COMPANY 1-618-445-3012



NOTE: CONSTRUCTION TRANSITIONS
STA. 2+25 TO STA 2+75
STA 7+50 TO STA 8+00
ALL QUANTITIES ARE INCLUDED IN THE PROPOSAL

CURVE #2
P.I. STA= 6+99.92
Δ= RT, 150°09'
D= 125.57'
R= 400'
T= 64.09'
L= 128.17'
E= 0.51'
e= NONE
T.R.= NONE
S.E. RUN= NONE
P.C. STA= 6+35.83
P.T. STA= 7+64.00

CURVE #1
P.I. STA= 3+55.07
Δ= LT, 40°0'16"
D= 154.35'
R= 300'
T= 104.88'
L= 209.68'
E= 1.83'
e= NONE
T.R.= NONE
S.E. RUN= NONE
P.C. STA= 2+50.19
P.T. STA= 4+59.87

STONE DUMPED RIPRAP, CLASS A4 AS DIRECTED BY THE ENGINEER ALONG THE ROAD SIDESLOPE. 85 TONS ALLOWED.

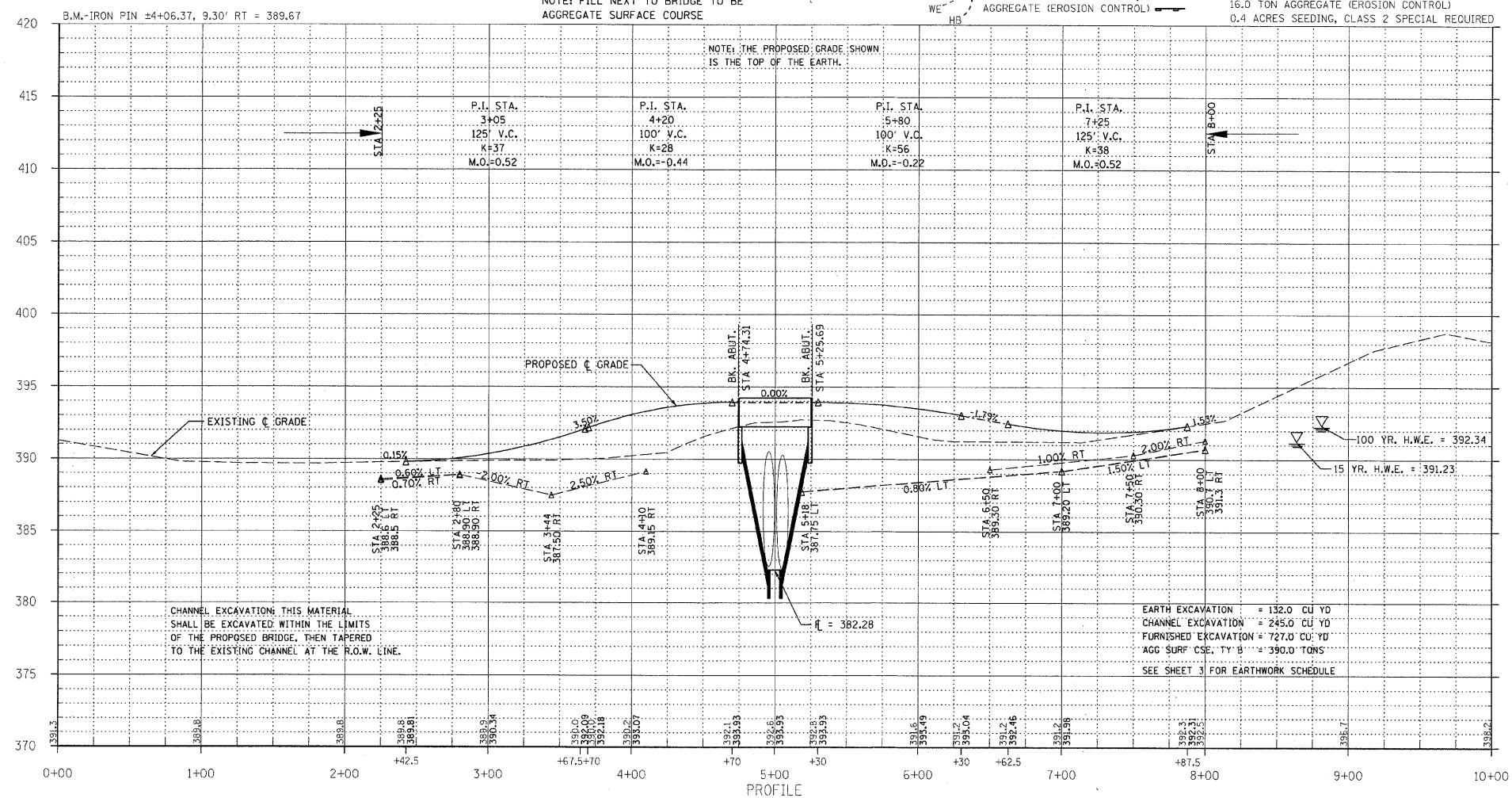
EXISTING BRIDGE STA 5+00; STRUCTURE NUMBER: 097-3064
A 2-8' DIAMETER TANK CARS

ONE (1) EACH-REMOVAL OF EXISTING STRUCTURES ALLOWED IN THIS PROPOSAL.

NOTE: FILL NEXT TO BRIDGE TO BE AGGREGATE SURFACE COURSE

INDICATES SHOULDER WIDENING FOR TERMINALS
TEMPORARY DITCH CHECKS
AGGREGATE (EROSION CONTROL)

0.1 ACRES TREE REMOVAL, ACRES
12.0 FEET TEMPORARY DITCH CHECKS
16.0 TON AGGREGATE (EROSION CONTROL)
0.4 ACRES SEEDING, CLASS 2 SPECIAL REQUIRED



CHANNEL EXCAVATION: THIS MATERIAL SHALL BE EXCAVATED WITHIN THE LIMITS OF THE PROPOSED BRIDGE, THEN TAPERED TO THE EXISTING CHANNEL AT THE R.O.W. LINE.

EARTH EXCAVATION = 132.0 CU YD
CHANNEL EXCAVATION = 245.0 CU YD
FURNISHED EXCAVATION = 727.0 CU YD
AGG SURF CSE, TY B = 390.0 TONS
SEE SHEET 3 FOR EARTHWORK SCHEDULE

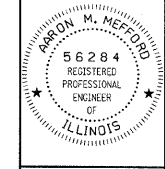
TR	SECTION	COUNTY	TOTAL SHEETS	SHEET NO.
128	06-08134-00-BR	WHITE	12	2

323 W. 3RD ST.
P.O. BOX 160
MT. CARMEL, IL 62863
PHONE: (618)-262-8651
FAX: (618)-263-3327

405 W. STATE ST
SUITE 100
PRINCETON, IN 47670
PHONE: (812)-386-7611
FAX: (812)-385-2812



PROFESSIONAL DESIGN FIRM
LAND SURVEY & PROFESSIONAL ENGINEERING CORPORATION
184-000887
(62-032435)(35-002769)



ARON M. MEFFORD
NAME
Signature
1-13-10
DATE
11-30-11
EXPIRES

TOWNSHIP ROUTE 128
OVER CREEK
WHITE COUNTY, ILLINOIS

SHEET TITLE:

PLAN & PROFILE

SCALE: VARIES
BY: AMM
DATE: 10/10
REV:

2 OF 12 SHEETS

SHEET NO. 2