



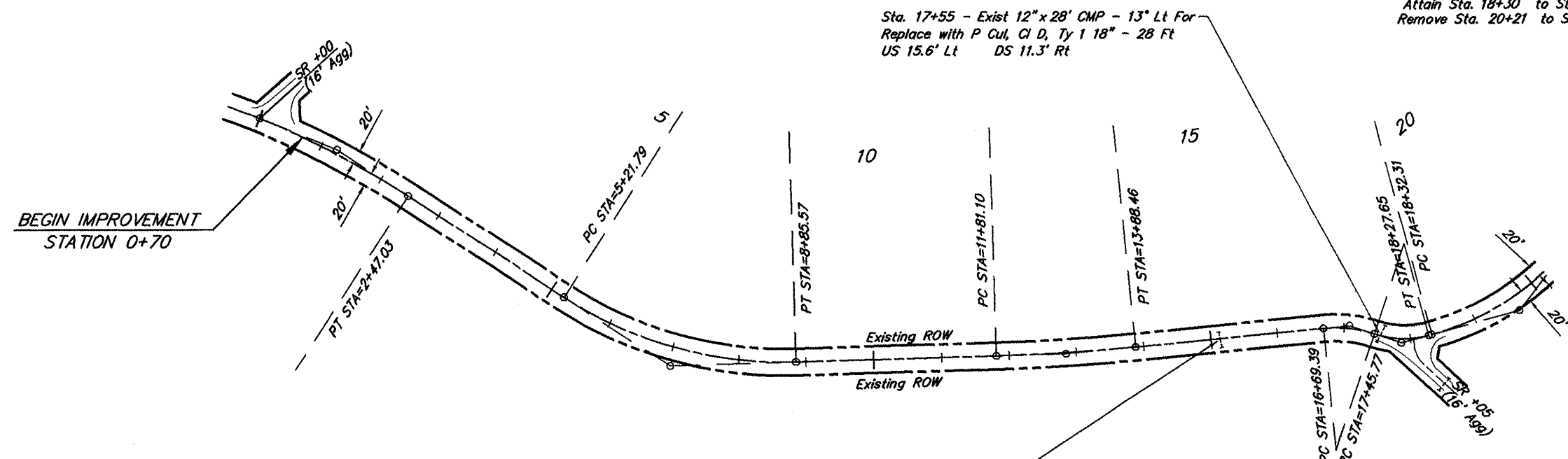
CURVE DATA - PI STA=7+09.46
 $\Delta = 34^{\circ}44'21''$ $T = 187.68'$
 $D = 9^{\circ}32'57''$ $L = 363.79'$
 $R = 600.00'$ $E = 28.67'$
 $S.E. = 0.034'/ft.$
 Attain Sta. 4+70 to Sta. 5+37
 Remove Sta. 8+70 to Sta. 9+37

CURVE DATA - PI STA=12+84.82
 $\Delta = 3^{\circ}57'37''$ $T = 103.72'$
 $D = 1^{\circ}54'35''$ $L = 207.36'$
 $R = 3000.00'$ $E = 1.79'$
 Normal Crown

CURVE DATA - PI STA=17+87.92
 $\Delta = 33^{\circ}30'38''$ $T = 42.15'$
 $D = 40^{\circ}55'32''$ $L = 81.88'$
 $R = 140.00'$ $E = 6.21'$
 $S.E. = 0.040'/ft.$
 Attain Sta. 17+46 to Sta. 17+87
 Remove Sta. 17+87 to Sta. 18+30

ROUTE	SECTION	COUNTY	TOTAL SHEETS	SHEET NO.
FAS 2934	09-00043-00-SC	HARDIN	11	3
PROJECT NO. ARA-2934 (10B)			CONTRACT NO. 99409	

CURVE DATA - PI STA=19+67.72
 $\Delta = 36^{\circ}50'57''$ $T = 135.41'$
 $D = 14^{\circ}05'43''$ $L = 261.43'$
 $R = 406.49'$ $E = 21.96'$
 $S.E. = 0.038'/ft.$
 Attain Sta. 18+30 to Sta. 19+03
 Remove Sta. 20+21 to Sta. 20+94

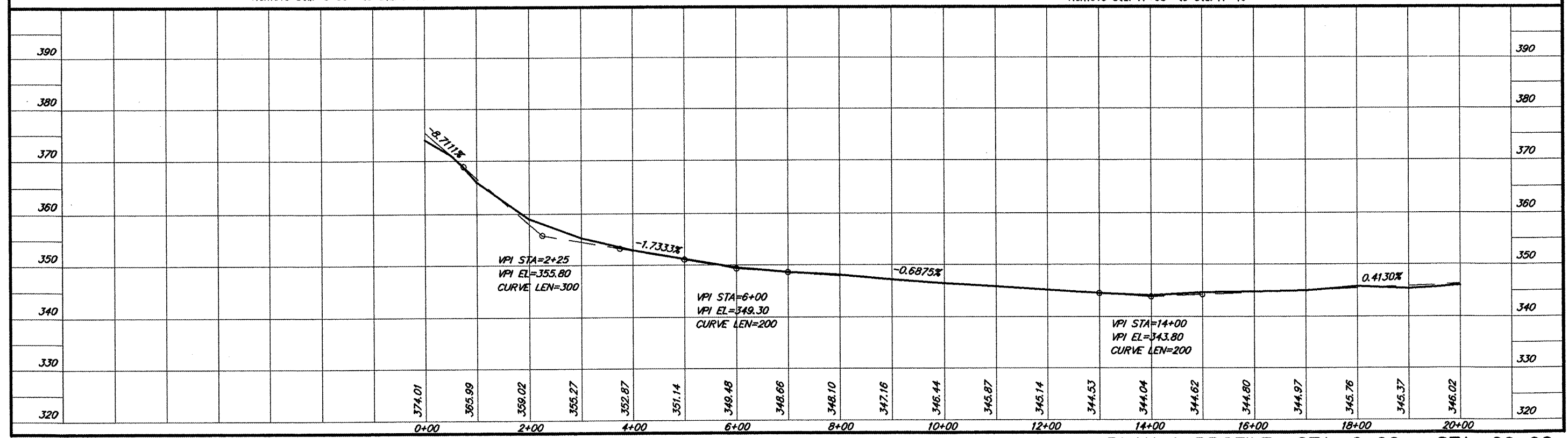


CURVE DATA - PI STA=1+23.91
 $\Delta = 11^{\circ}12'09''$ $T = 123.91'$
 $D = 4^{\circ}32'06''$ $L = 247.03'$
 $R = 1263.45'$ $E = 6.06'$
 $S.E. = 0.025'/ft.$
 Attain Sta. 0+00 to Sta. 0+00
 Remove Sta. 0+00 to Sta. 0+44

Sta. 15+14 - Exist 18" x 28' CMP - 6" Rt For
 Add P Cul, Cl D, Ty 1 18" - 4 Ft to US (Lt) end

CURVE DATA - PI STA=17+08.15
 $\Delta = 24^{\circ}03'04''$ $T = 38.76'$
 $D = 31^{\circ}29'11''$ $L = 76.39'$
 $R = 181.97'$ $E = 4.08'$
 $S.E. = 0.038'/ft.$
 Attain Sta. 16+21 to Sta. 16+85
 Remove Sta. 17+08 to Sta. 17+46

SCALES:
 1" = 200' HOR
 1" = 20' VER



PLAN & PROFILE STA. 0+00 - STA. 20+00