

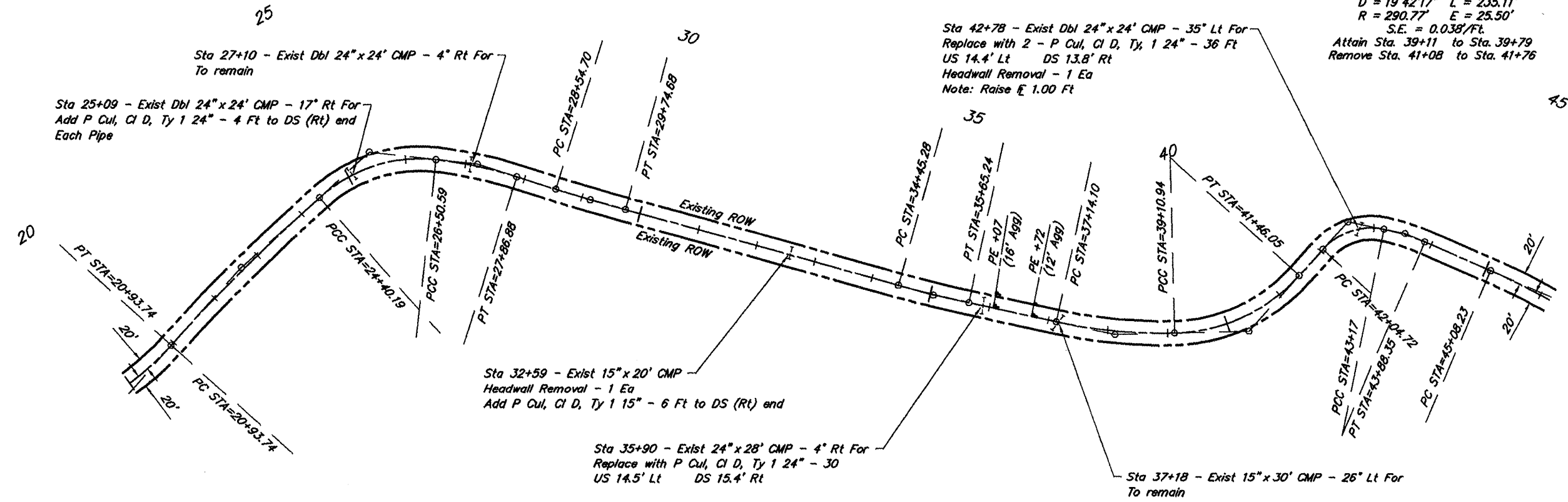
ROUTE	SECTION	COUNTY	TOTAL SHEETS	SHEET NO.
FAS 2934	09-00043-00-SC	HARDIN	11	4
PROJECT NO. ARA-2934 (108)			CONTRACT NO. 99409	

CURVE DATA - PI STA=29+14.70
 $\Delta = 2^{\circ}03'17''$ $T = 60.00'$
 $D = 1^{\circ}42'45''$ $L = 119.98'$
 $R = 3345.76'$ $E = 0.54'$
 Normal Crown

CURVE DATA - PI STA=35+05.28
 $\Delta = 3^{\circ}18'55''$ $T = 60.00'$
 $D = 2^{\circ}45'48''$ $L = 119.97'$
 $R = 2073.36'$ $E = 0.87'$
 $S.E. = 0.015'/ft.$
 Attain Sta. 34+11 to Sta. 34+52
 Remove Sta. 35+58 to Sta. 35+99

CURVE DATA - PI STA=38+12.99
 $\Delta = 13^{\circ}42'38''$ $T = 98.89'$
 $D = 6^{\circ}57'55''$ $L = 196.84'$
 $R = 822.60'$ $E = 5.92'$
 $S.E. = 0.030'/ft.$
 Attain Sta. 36+66 to Sta. 37+28
 Remove Sta. 38+49 to Sta. 39+11

CURVE DATA - PI STA=40+35.35
 $\Delta = 46^{\circ}19'40''$ $T = 124.41'$
 $D = 19^{\circ}42'17''$ $L = 235.11'$
 $R = 290.77'$ $E = 25.50'$
 $S.E. = 0.038'/ft.$
 Attain Sta. 39+11 to Sta. 39+79
 Remove Sta. 41+08 to Sta. 41+76



CURVE DATA - PI STA=22+67.14
 $\Delta = 6^{\circ}26'00''$ $T = 173.41'$
 $D = 1^{\circ}51'25''$ $L = 346.45'$
 $R = 3085.53'$ $E = 4.87'$
 Normal Crown

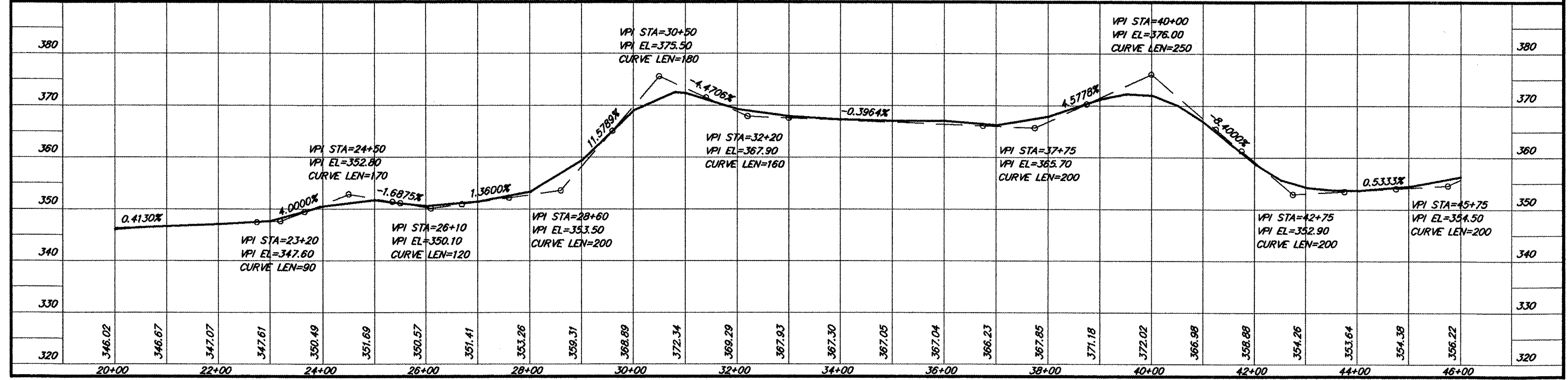
CURVE DATA - PI STA=25+52.07
 $\Delta = 48^{\circ}13'09''$ $T = 111.88'$
 $D = 22^{\circ}55'06''$ $L = 210.40'$
 $R = 250.00'$ $E = 23.89'$
 $S.E. = 0.039'/ft.$
 Attain Sta. 24+40 to Sta. 25+09
 Remove Sta. 25+82 to Sta. 26+51

CURVE DATA - PI STA=27+18.95
 $\Delta = 11^{\circ}09'20''$ $T = 68.36'$
 $D = 8^{\circ}11'06''$ $L = 136.29'$
 $R = 700.00'$ $E = 3.33'$
 $S.E. = 0.032'/ft.$
 Attain Sta. 26+51 to Sta. 27+15
 Remove Sta. 27+72 to Sta. 28+36

CURVE DATA - PI STA=42+66.50
 $\Delta = 59^{\circ}26'32''$ $T = 61.78'$
 $D = 52^{\circ}56'38''$ $L = 112.27'$
 $R = 108.22'$ $E = 16.39'$
 $S.E. = 0.040'/ft.$
 Attain Sta. 41+76 to Sta. 42+43
 Remove Sta. 42+61 to Sta. 43+17

CURVE DATA - PI STA=43+52.80
 $\Delta = 11^{\circ}45'02''$ $T = 35.80'$
 $D = 16^{\circ}28'09''$ $L = 71.35'$
 $R = 347.90'$ $E = 1.84'$
 $S.E. = 0.040'/ft.$
 Attain Sta. 43+17 to Sta. 43+53
 Remove Sta. 43+70 to Sta. 44+45

SCALES:
 1" = 200' HOR
 1" = 20' VER



PLAN & PROFILE STA. 20+00 - STA. 46+00