



CURVE DATA - PI STA=49+37.47

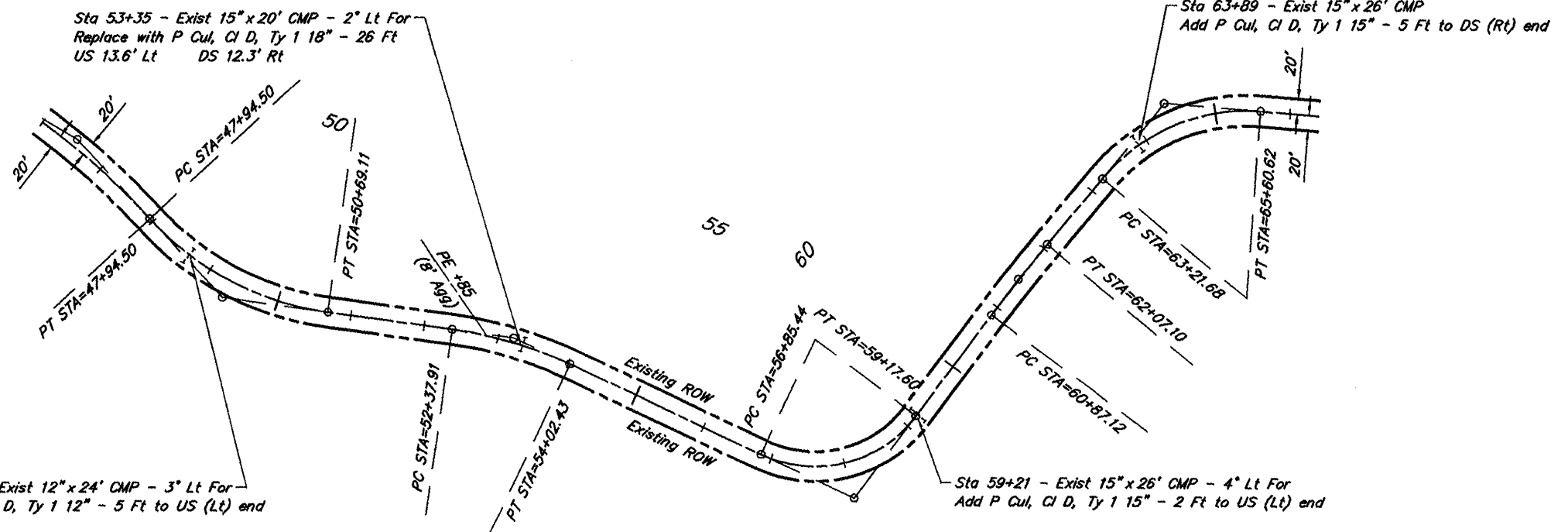
$\Delta = 39^{\circ}20'04''$ $T = 142.96'$
 $D = 14^{\circ}19'26''$ $L = 274.61'$
 $R = 400.00'$ $E = 24.78'$
 $S.E. = 0.039'/ft.$
 Attain Sta. 47+95 to Sta. 48+69
 Remove Sta. 50+51 to Sta. 51+25

CURVE DATA - PI STA=58+23.71

$\Delta = 78^{\circ}14'42''$ $T = 138.27'$
 $D = 33^{\circ}42'12''$ $L = 232.16'$
 $R = 170.00'$ $E = 49.13'$
 $S.E. = 0.038'/ft.$
 Attain Sta. 56+37 to Sta. 57+01
 Remove Sta. 59+02 to Sta. 59+66

ROUTE	SECTION	COUNTY	TOTAL SHEETS	SHEET NO.
FAS 2934	09-00043-00-SC	HARDIN	11	5
PROJECT NO. ARA-2934 (10B)			CONTRACT NO. 99409	

65



CURVE DATA - PI STA=46+52.36

$\Delta = 16^{\circ}27'32''$ $T = 144.13'$
 $D = 5^{\circ}44'58''$ $L = 286.27'$
 $R = 996.55'$ $E = 10.37'$
 $S.E. = 0.028'/ft.$
 Attain Sta. 44+62 to Sta. 45+21
 Remove Sta. 47+36 to Sta. 47+95

CURVE DATA - PI STA=53+20.79

$\Delta = 17^{\circ}08'21''$ $T = 82.88'$
 $D = 10^{\circ}25'03''$ $L = 164.52'$
 $R = 550.00'$ $E = 6.21'$
 $S.E. = 0.035'/ft.$
 Attain Sta. 51+86 to Sta. 52+54
 Remove Sta. 53+87 to Sta. 54+55

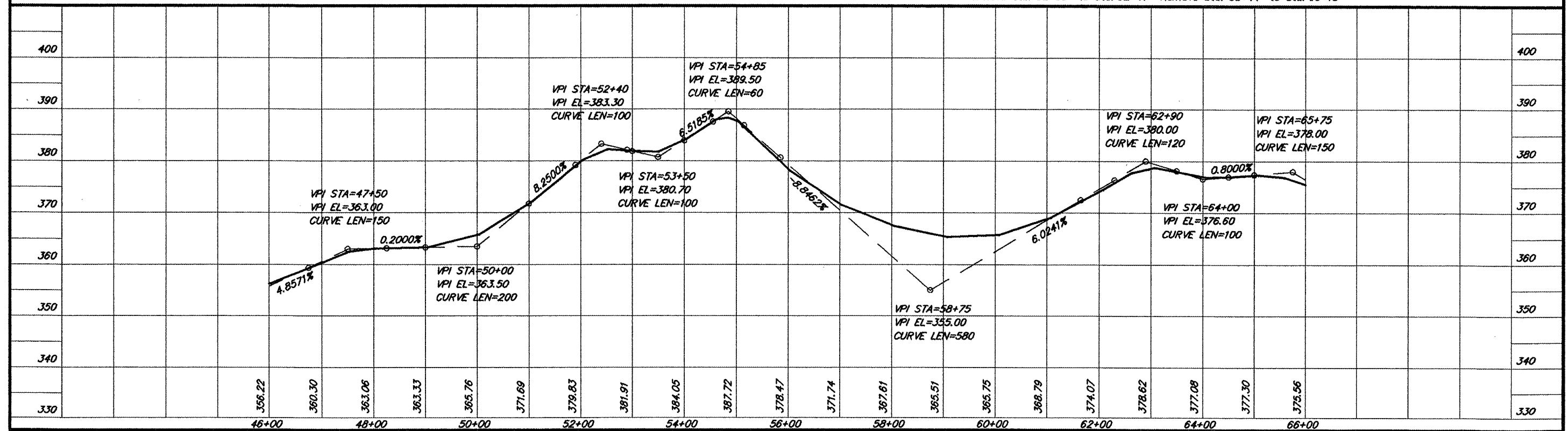
CURVE DATA - PI STA=61+47.12

$\Delta = 2^{\circ}39'59''$ $T = 60.00'$
 $D = 2^{\circ}13'20''$ $L = 119.98'$
 $R = 2578.16'$ $E = 0.70'$
 $S.E. = 0.015'/ft.$
 Attain Sta. 60+53 to Sta. 60+94
 Remove Sta. 62+00 to Sta. 62+41

CURVE DATA - PI STA=64+51.16

$\Delta = 54^{\circ}45'38''$ $T = 129.48'$
 $D = 22^{\circ}55'06''$ $L = 238.94'$
 $R = 250.00'$ $E = 31.54'$
 $S.E. = 0.039'/ft.$
 Attain Sta. 62+69 to Sta. 63+38
 Remove Sta. 65+44 to Sta. 66+13

SCALES:
 1" = 200' HOR
 1" = 20' VER



PLAN & PROFILE STA. 46+00 - STA. 66+00