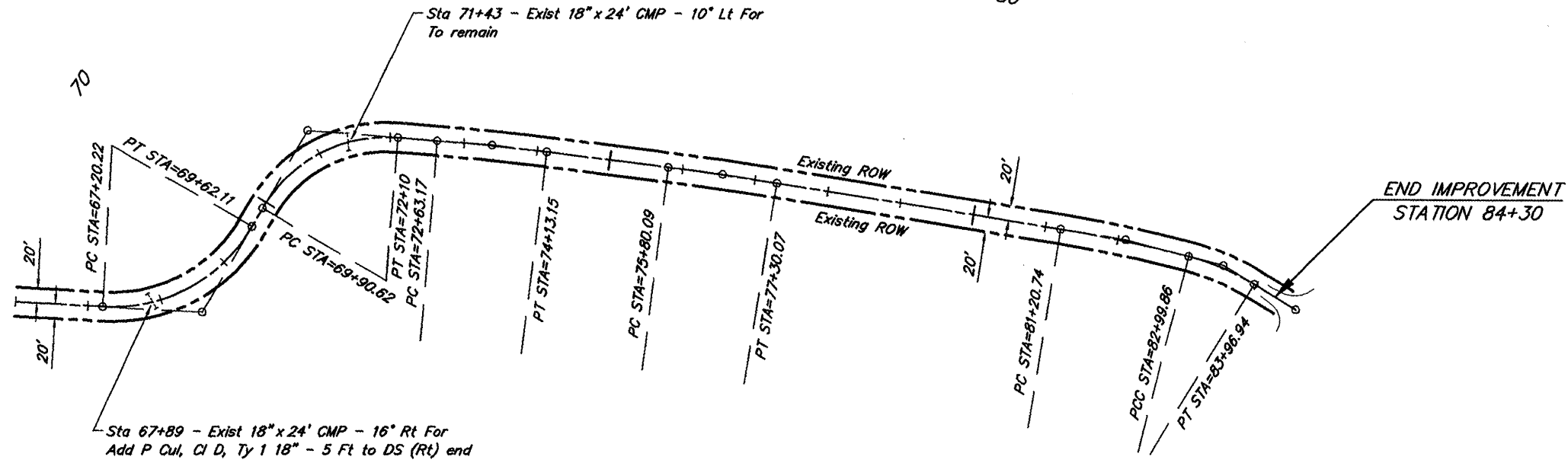


CURVE DATA - PI STA=68+55.03
 $\Delta = 62^{\circ}59'51''$ $T = 134.81'$
 $D = 26^{\circ}02'37''$ $L = 241.89'$
 $R = 220.00'$ $E = 38.02'$
 $S.E. = 0.040'/ft.$
 Attain Sta. 66+66 to Sta. 67+37
 Remove Sta. 69+06 to Sta. 69+77

ROUTE	SECTION	COUNTY	TOTAL SHEETS	SHEET NO.
FAS 2934	09-00043-00-SC	HARDIN	11	6
PROJECT NO. ARA-2934 (108)			CONTRACT NO. 99409	



SCALES:
 1" = 200' HOR
 1" = 20' VER

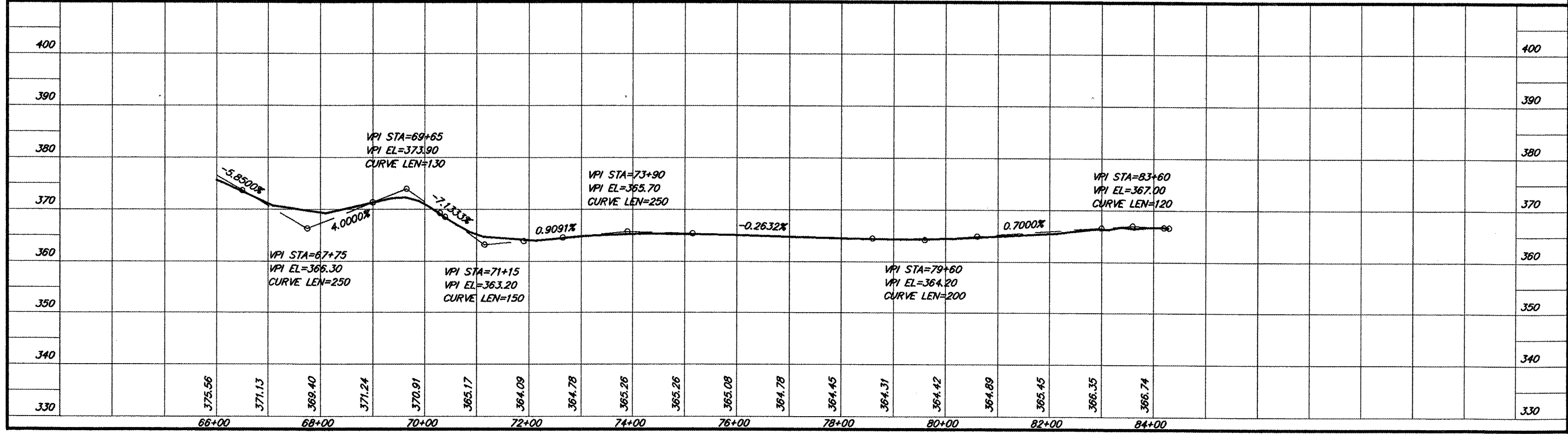
CURVE DATA - PI STA=71+13.56
 $\Delta = 64^{\circ}27'25''$ $T = 122.93'$
 $D = 29^{\circ}22'57''$ $L = 219.37'$
 $R = 195.00'$ $E = 35.52'$
 $S.E. = 0.037'/ft.$
 Attain Sta. 69+77 to Sta. 70+40
 Remove Sta. 71+95 to Sta. 72+58

CURVE DATA - PI STA=73+38.17
 $\Delta = 2^{\circ}33'39''$ $T = 75.00'$
 $D = 1^{\circ}42'27''$ $L = 149.98'$
 $R = 3355.60'$ $E = 0.84'$
 Normal Crown

CURVE DATA - PI STA=76+55.09
 $\Delta = 1^{\circ}55'50''$ $T = 74.99'$
 $D = 1^{\circ}17'14''$ $L = 149.98'$
 $R = 4451.02'$ $E = 0.63'$
 Normal Crown

CURVE DATA - PI STA=82+10.36
 $\Delta = 5^{\circ}19'24''$ $T = 89.63'$
 $D = 2^{\circ}58'19''$ $L = 179.12'$
 $R = 1927.92'$ $E = 2.08'$
 $S.E. = 0.016'/ft.$
 Attain Sta. 80+86 to Sta. 81+28
 Remove Sta. 82+58 to Sta. 83+00

CURVE DATA - PI STA=83+48.76
 $\Delta = 16^{\circ}48'18''$ $T = 48.89'$
 $D = 17^{\circ}18'38''$ $L = 97.08'$
 $R = 330.99'$ $E = 3.59'$
 $S.E. = 0.040'/ft.$
 Attain Sta. 83+00 to Sta. 83+48
 Remove Sta. 83+79 to Sta. 84+54



PLAN & PROFILE STA. 66+00 - STA. 85+00