

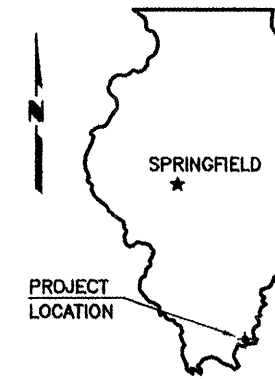


STATE OF ILLINOIS  
DEPARTMENT OF TRANSPORTATION  
PLANS FOR PROPOSED

ROUTE	SECTION	COUNTY	TOTAL SHEETS	SHEET NO.
FAS 2934	09-00043-00-SC	HARDIN	11	1
PROJECT NO. ARA-2934 (108)			CONTRACT NO. 99409	

# AMERICAN RECOVERY AND REINVESTMENT ACT OF 2009

FAS ROUTE 2934  
SECTION 09-00043-00-SC  
PROJECT NO. ARA-2934 (108)  
JOB NO. C-99-566-09



SUMMARY OF QUANTITIES

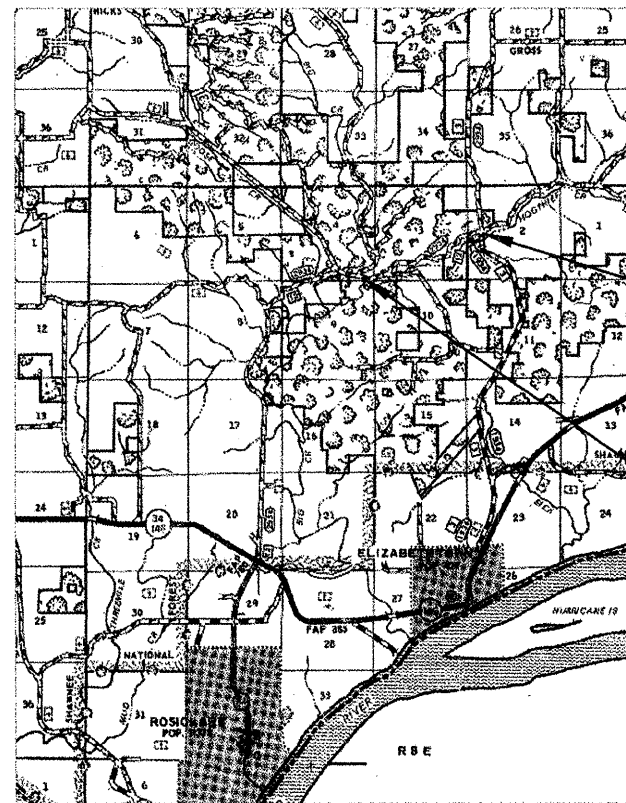
CODE NO.	PAY ITEM	UNIT	TOTAL
X0323092*	HEADWALL REMOVAL	EACH	2
20200100	EARTH EXCAVATION	CU YD	250
35800100	PREPARATION OF BASE	SQ YD	16,800
35800300*	AGGREGATE BASE REPAIR (SPECIAL)	TON	2,272
40300100	BITUMINOUS MATERIALS (PRIME COAT)	GALLON	5,380
40300300	BITUMINOUS MATERIALS (COVER AND SEAL COATS)	GALLON	12,600
40300500	COVER COAT AGGREGATE	TON	420
40300600	SEAL COAT AGGREGATE	TON	260
542D0217	PIPE CULVERTS, CLASS D, TYPE 1 12"	FOOT	5
542D0220	PIPE CULVERTS, CLASS D, TYPE 1 15"	FOOT	13
542D0223	PIPE CULVERTS, CLASS D, TYPE 1 18"	FOOT	63
542D0229	PIPE CULVERTS, CLASS D, TYPE 1 24"	FOOT	110
67100100	MOBILIZATION	L SUM	1

\* SEE SPECIAL PROVISIONS

INDEX OF SHEETS

1. COVER SHEET
  2. TYPICAL SECTIONS
  - 3.-6. PLAN & PROFILE
  - 7.-11. CROSS SECTIONS
- STANDARDS
- 701006-03 TRAFFIC CONTROL
  - 701011-02 TRAFFIC CONTROL
  - 701301-03 TRAFFIC CONTROL
  - 701901-01 TRAFFIC CONTROL DEVICES
  - BLR 21-08 TYPICAL APPLICATION OF TRAFFIC CONTROL DEVICES
  - BLR 24-2 MAILBOX TURNOUTS

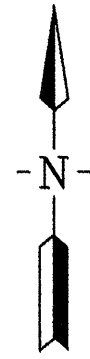
## HARDIN COUNTY



END IMPROVEMENT  
STATION 84+30

BEGIN IMPROVEMENT  
STATION 0+70

CLASSIFICATION : RURAL COLLECTOR  
ADT : 175  
DESIGN SPEED : 30 MPH



12-7-09

*Edward W. Miller*  
Edward W. Miller  
PROFESSIONAL ENGINEER  
#062-025277  
EXPIRES NOV. 30, 2011

CONTRACT NO. 99409

E. MILLER ENGINEERING, INC.  
CONSULTING ENGINEERS  
HARRISBURG, ILLINOIS

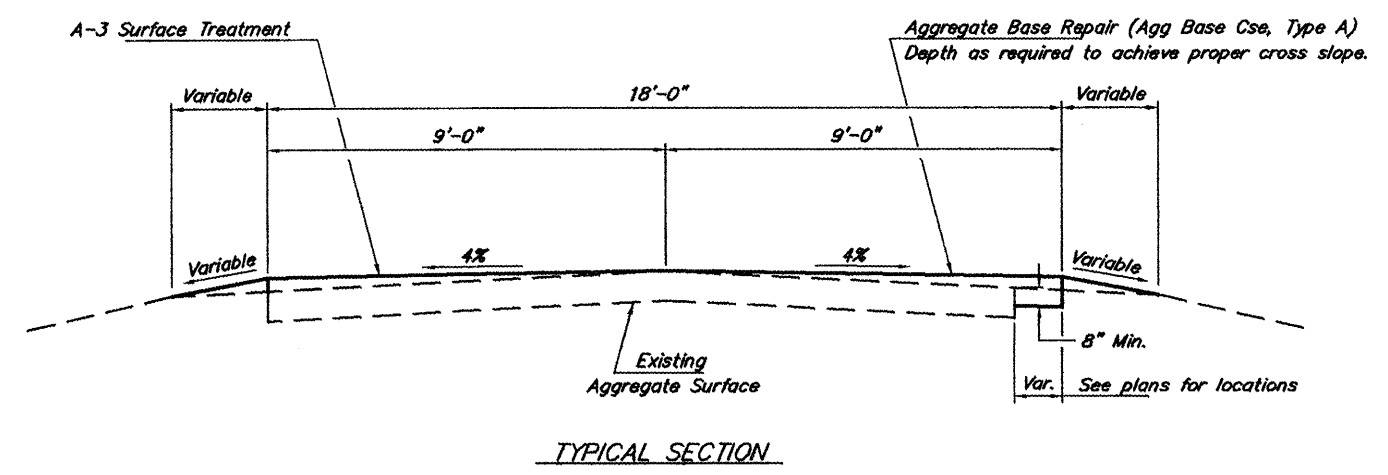
### LOCATION MAP

SCALE: 1" = 2 MILES

NET LENGTH OF IMPROVEMENT = 8,360.00 FT. = 1.5833 MILES

ILLINOIS DEPARTMENT OF TRANSPORTATION	
Approved	<u>12/16/09</u> <i>Nancy Loney</i> Hardin County Engineer
Passed	<u>12/16/09</u> <i>Richard W. Melcher</i> District 9 Engineer of Local Roads and Streets
Releasing for Bid Based on Limited Review	<u>12-23-09</u> <i>Mary C. Lammie</i> Deputy Director of Highways, Region 5 Engineer

ROUTE	SECTION	COUNTY	TOTAL SHEETS	SHEET NO.
FAS 2934	08-00043-00-SC	HARDIN	11	2
PROJECT NO. ARA-2934 (108)			CONTRACT NO. 99409	





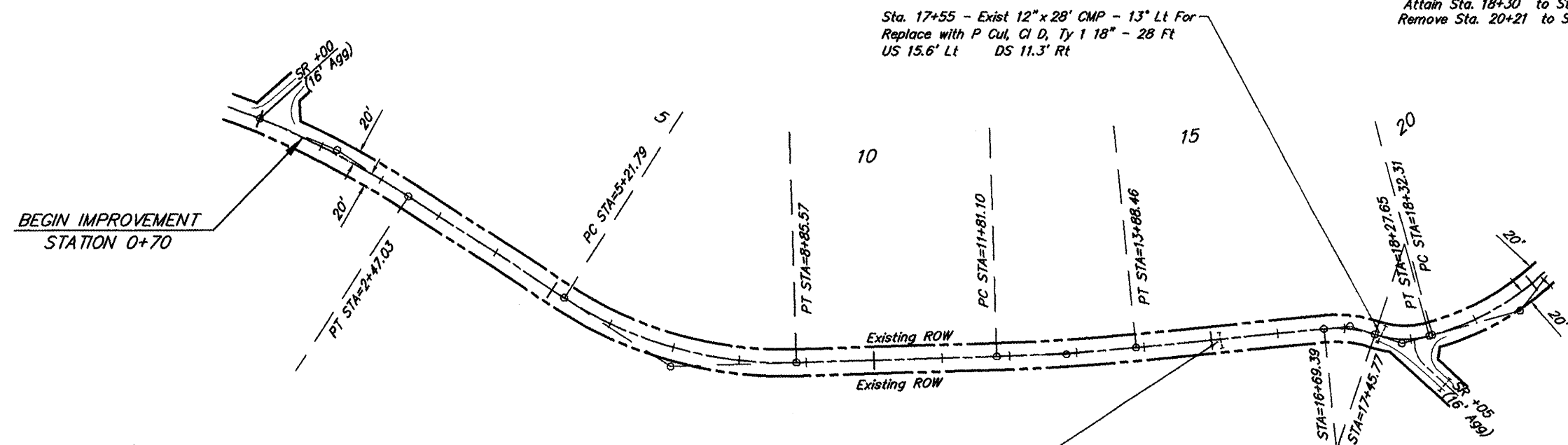
**CURVE DATA - PI STA=7+09.46**  
 $\Delta = 34^{\circ}44'21''$   $T = 187.68'$   
 $D = 9^{\circ}32'57''$   $L = 363.79'$   
 $R = 600.00'$   $E = 28.67'$   
 $S.E. = 0.034'/ft.$   
 Attain Sta. 4+70 to Sta. 5+37  
 Remove Sta. 8+70 to Sta. 9+37

**CURVE DATA - PI STA=12+84.82**  
 $\Delta = 3^{\circ}57'37''$   $T = 103.72'$   
 $D = 1^{\circ}54'35''$   $L = 207.36'$   
 $R = 3000.00'$   $E = 1.79'$   
 Normal Crown

**CURVE DATA - PI STA=17+87.92**  
 $\Delta = 33^{\circ}30'38''$   $T = 42.15'$   
 $D = 40^{\circ}55'32''$   $L = 81.88'$   
 $R = 140.00'$   $E = 6.21'$   
 $S.E. = 0.040'/ft.$   
 Attain Sta. 17+46 to Sta. 17+87  
 Remove Sta. 17+87 to Sta. 18+30

ROUTE	SECTION	COUNTY	TOTAL SHEETS	SHEET NO.
FAS 2934	09-00043-00-SC	HARDIN	11	3
PROJECT NO. ARA-2934 (10B)			CONTRACT NO. 99409	

**CURVE DATA - PI STA=19+67.22**  
 $\Delta = 36^{\circ}50'57''$   $T = 135.41'$   
 $D = 14^{\circ}05'43''$   $L = 261.43'$   
 $R = 406.49'$   $E = 21.96'$   
 $S.E. = 0.038'/ft.$   
 Attain Sta. 18+30 to Sta. 19+03  
 Remove Sta. 20+21 to Sta. 20+94

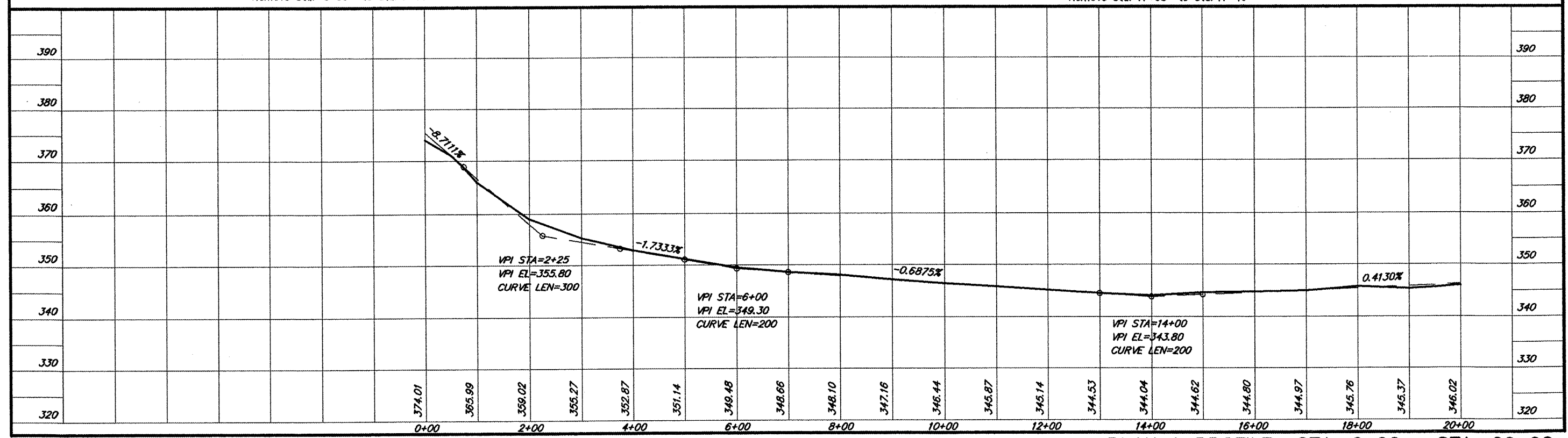


Sta. 15+14 - Exist 18" x 28' CMP - 6" Rt For Add P Cul, CI D, Ty 1 18" - 4 Ft to US (Lt) end

**CURVE DATA - PI STA=1+23.91**  
 $\Delta = 11^{\circ}12'09''$   $T = 123.91'$   
 $D = 4^{\circ}32'06''$   $L = 247.03'$   
 $R = 1263.45'$   $E = 6.06'$   
 $S.E. = 0.025'/ft.$   
 Attain Sta. 0+00 to Sta. 0+00  
 Remove Sta. 0+00 to Sta. 0+44

**CURVE DATA - PI STA=17+08.15**  
 $\Delta = 24^{\circ}03'04''$   $T = 38.76'$   
 $D = 31^{\circ}29'11''$   $L = 76.39'$   
 $R = 181.97'$   $E = 4.08'$   
 $S.E. = 0.038'/ft.$   
 Attain Sta. 16+21 to Sta. 16+85  
 Remove Sta. 17+08 to Sta. 17+46

SCALES:  
 1" = 200' HOR  
 1" = 20' VER



PLAN & PROFILE STA. 0+00 - STA. 20+00

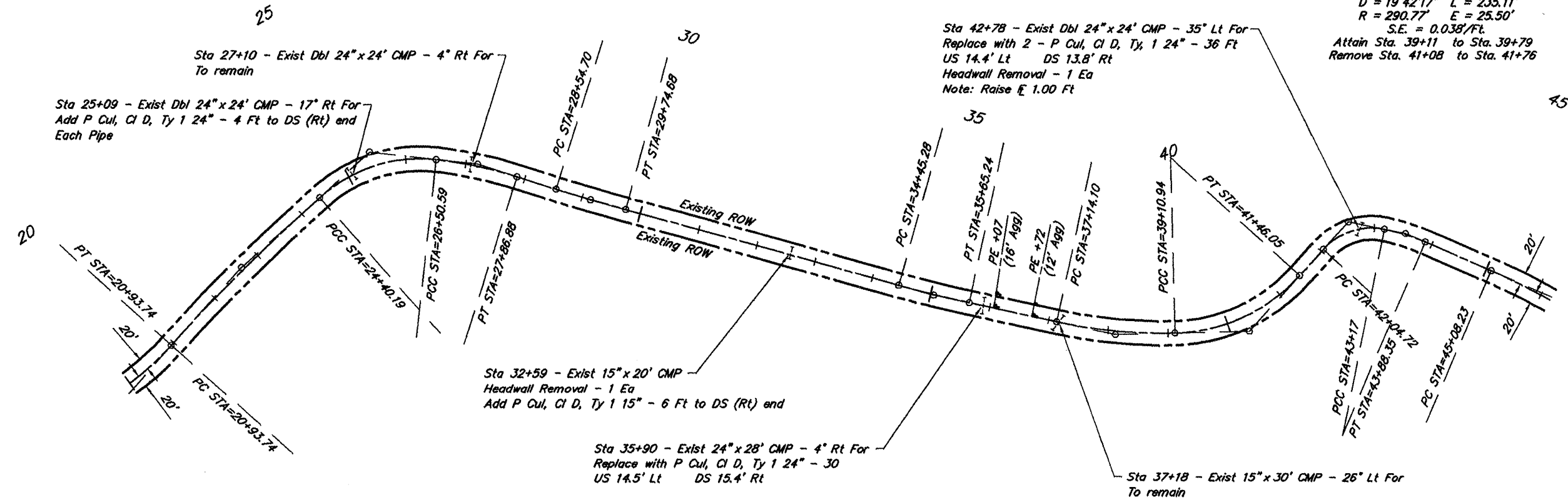
ROUTE	SECTION	COUNTY	TOTAL SHEETS	SHEET NO.
FAS 2934	09-00043-00-SC	HARDIN	11	4
PROJECT NO. ARA-2934 (108)			CONTRACT NO. 99409	

**CURVE DATA - PI STA=29+14.70**  
 $\Delta = 2^{\circ}03'17''$   $T = 60.00'$   
 $D = 1^{\circ}42'45''$   $L = 119.98'$   
 $R = 3345.76'$   $E = 0.54'$   
 Normal Crown

**CURVE DATA - PI STA=35+05.28**  
 $\Delta = 3^{\circ}18'55''$   $T = 60.00'$   
 $D = 2^{\circ}45'48''$   $L = 119.97'$   
 $R = 2073.36'$   $E = 0.87'$   
 $S.E. = 0.015'/ft.$   
 Attain Sta. 34+11 to Sta. 34+52  
 Remove Sta. 35+58 to Sta. 35+99

**CURVE DATA - PI STA=38+12.99**  
 $\Delta = 13^{\circ}42'38''$   $T = 98.89'$   
 $D = 6^{\circ}57'55''$   $L = 196.84'$   
 $R = 822.60'$   $E = 5.92'$   
 $S.E. = 0.030'/ft.$   
 Attain Sta. 36+66 to Sta. 37+28  
 Remove Sta. 38+49 to Sta. 39+11

**CURVE DATA - PI STA=40+35.35**  
 $\Delta = 46^{\circ}19'40''$   $T = 124.41'$   
 $D = 19^{\circ}42'17''$   $L = 235.11'$   
 $R = 290.77'$   $E = 25.50'$   
 $S.E. = 0.038'/ft.$   
 Attain Sta. 39+11 to Sta. 39+79  
 Remove Sta. 41+08 to Sta. 41+76



**CURVE DATA - PI STA=22+67.14**  
 $\Delta = 6^{\circ}26'00''$   $T = 173.41'$   
 $D = 1^{\circ}51'25''$   $L = 346.45'$   
 $R = 3085.53'$   $E = 4.87'$   
 Normal Crown

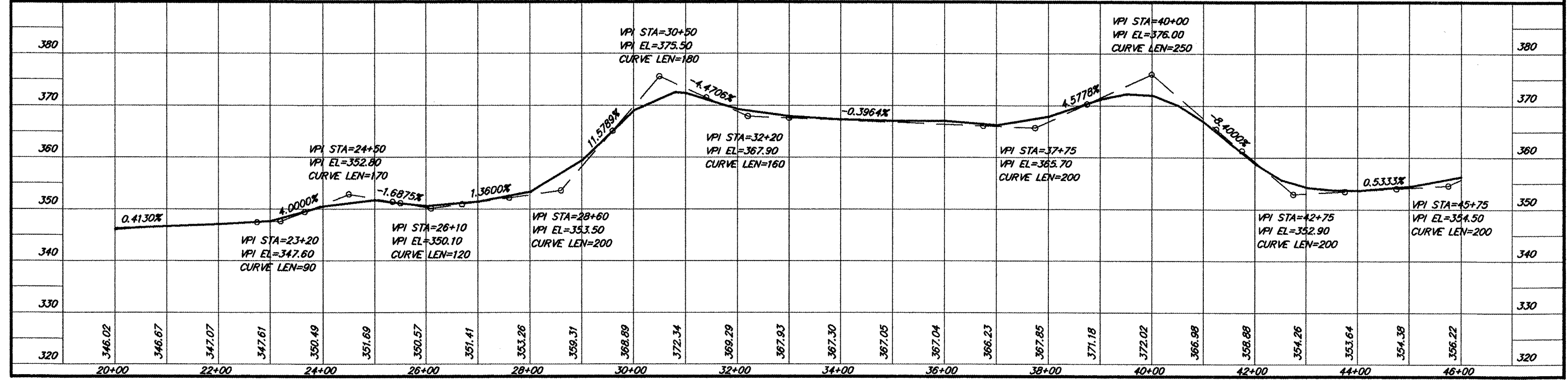
**CURVE DATA - PI STA=25+52.07**  
 $\Delta = 48^{\circ}13'09''$   $T = 111.88'$   
 $D = 22^{\circ}55'06''$   $L = 210.40'$   
 $R = 250.00'$   $E = 23.89'$   
 $S.E. = 0.039'/ft.$   
 Attain Sta. 24+40 to Sta. 25+09  
 Remove Sta. 25+82 to Sta. 26+51

**CURVE DATA - PI STA=27+18.95**  
 $\Delta = 11^{\circ}09'20''$   $T = 68.36'$   
 $D = 8^{\circ}11'06''$   $L = 136.29'$   
 $R = 700.00'$   $E = 3.33'$   
 $S.E. = 0.032'/ft.$   
 Attain Sta. 26+51 to Sta. 27+15  
 Remove Sta. 27+72 to Sta. 28+36

**CURVE DATA - PI STA=42+66.50**  
 $\Delta = 59^{\circ}26'32''$   $T = 61.78'$   
 $D = 52^{\circ}56'38''$   $L = 112.27'$   
 $R = 108.22'$   $E = 16.39'$   
 $S.E. = 0.040'/ft.$   
 Attain Sta. 41+76 to Sta. 42+43  
 Remove Sta. 42+61 to Sta. 43+17

**CURVE DATA - PI STA=43+52.80**  
 $\Delta = 11^{\circ}45'02''$   $T = 35.80'$   
 $D = 16^{\circ}28'09''$   $L = 71.35'$   
 $R = 347.90'$   $E = 1.84'$   
 $S.E. = 0.040'/ft.$   
 Attain Sta. 43+17 to Sta. 43+53  
 Remove Sta. 43+70 to Sta. 44+45

SCALES:  
 1" = 200' HOR  
 1" = 20' VER



PLAN & PROFILE STA. 20+00 - STA. 46+00



**CURVE DATA - PI STA=49+37.47**

$\Delta = 39^{\circ}20'04''$   $T = 142.96'$   
 $D = 14^{\circ}19'26''$   $L = 274.61'$   
 $R = 400.00'$   $E = 24.78'$   
 $S.E. = 0.039'/ft.$   
 Attain Sta. 47+95 to Sta. 48+69  
 Remove Sta. 50+51 to Sta. 51+25

**CURVE DATA - PI STA=58+23.71**

$\Delta = 78^{\circ}14'42''$   $T = 138.27'$   
 $D = 33^{\circ}42'12''$   $L = 232.16'$   
 $R = 170.00'$   $E = 49.13'$   
 $S.E. = 0.038'/ft.$   
 Attain Sta. 56+37 to Sta. 57+01  
 Remove Sta. 59+02 to Sta. 59+66

ROUTE	SECTION	COUNTY	TOTAL SHEETS	SHEET NO.
FAS 2934	09-00043-00-SC	HARDIN	11	5
PROJECT NO. ARA-2934 (10B)			CONTRACT NO. 99409	

65

**CURVE DATA - PI STA=46+52.36**

$\Delta = 16^{\circ}27'32''$   $T = 144.13'$   
 $D = 5^{\circ}44'58''$   $L = 286.27'$   
 $R = 996.55'$   $E = 10.37'$   
 $S.E. = 0.028'/ft.$   
 Attain Sta. 44+62 to Sta. 45+21  
 Remove Sta. 47+36 to Sta. 47+95

Sta 53+35 - Exist 15" x 20' CMP - 2° Lt For  
 Replace with P Cul, CI D, Ty 1 18" - 26 Ft  
 US 13.6' Lt DS 12.3' Rt

Sta 63+89 - Exist 15" x 26' CMP  
 Add P Cul, CI D, Ty 1 15" - 5 Ft to DS (Rt) end

Sta 48+67 - Exist 12" x 24' CMP - 3° Lt For  
 Add P Cul, CI D, Ty 1 12" - 5 Ft to US (Lt) end

Sta 59+21 - Exist 15" x 26' CMP - 4° Lt For  
 Add P Cul, CI D, Ty 1 15" - 2 Ft to US (Lt) end

**CURVE DATA - PI STA=53+20.79**

$\Delta = 17^{\circ}08'21''$   $T = 82.88'$   
 $D = 10^{\circ}25'03''$   $L = 164.52'$   
 $R = 550.00'$   $E = 6.21'$   
 $S.E. = 0.035'/ft.$   
 Attain Sta. 51+86 to Sta. 52+54  
 Remove Sta. 53+87 to Sta. 54+55

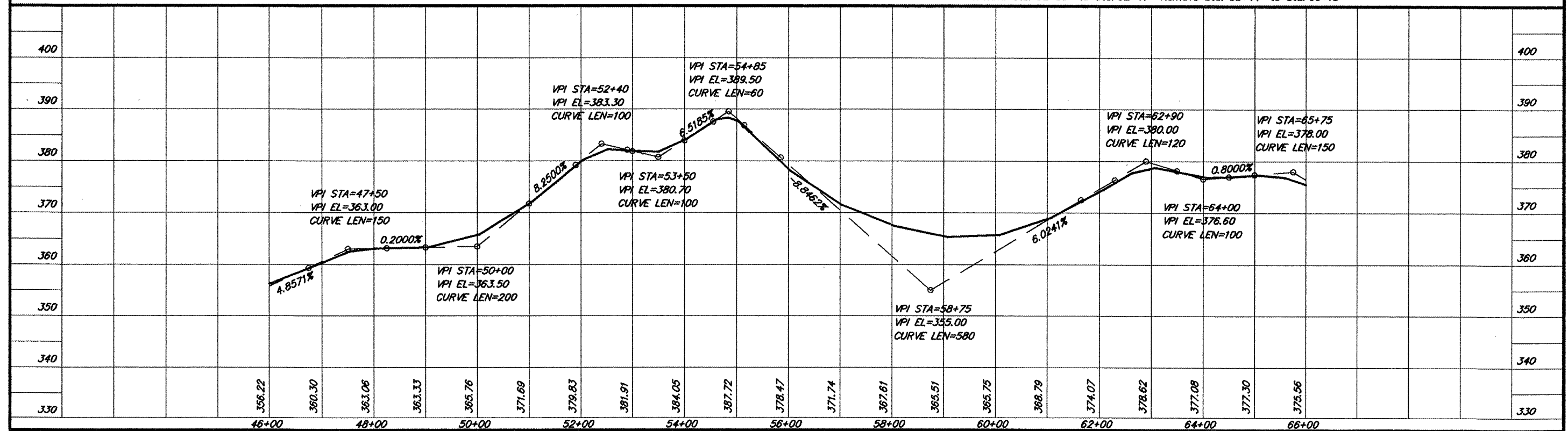
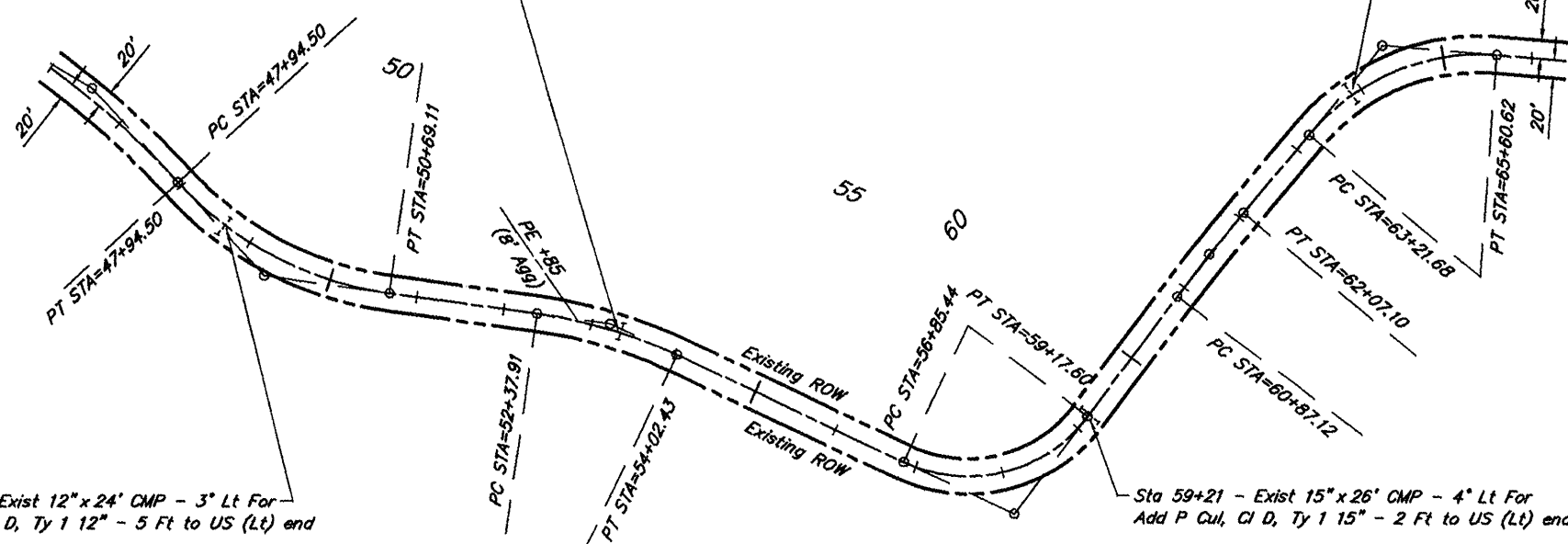
**CURVE DATA - PI STA=61+47.12**

$\Delta = 2^{\circ}39'59''$   $T = 60.00'$   
 $D = 2^{\circ}13'20''$   $L = 119.98'$   
 $R = 2578.16'$   $E = 0.70'$   
 $S.E. = 0.015'/ft.$   
 Attain Sta. 60+53 to Sta. 60+94  
 Remove Sta. 62+00 to Sta. 62+41

**CURVE DATA - PI STA=64+51.16**

$\Delta = 54^{\circ}45'38''$   $T = 129.48'$   
 $D = 22^{\circ}55'06''$   $L = 238.94'$   
 $R = 250.00'$   $E = 31.54'$   
 $S.E. = 0.039'/ft.$   
 Attain Sta. 62+69 to Sta. 63+38  
 Remove Sta. 65+44 to Sta. 66+13

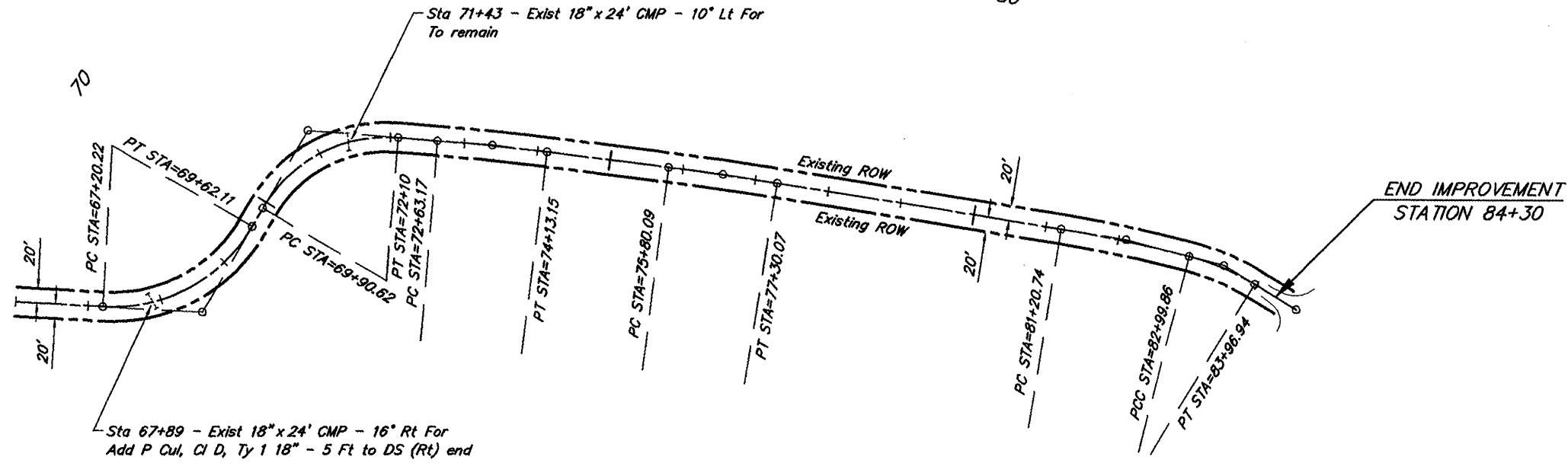
SCALES:  
 1" = 200' HOR  
 1" = 20' VER



PLAN & PROFILE STA. 46+00 - STA. 66+00

**CURVE DATA - PI STA=68+55.03**  
 $\Delta = 62^{\circ}59'51''$   $T = 134.81'$   
 $D = 26^{\circ}02'37''$   $L = 241.89'$   
 $R = 220.00'$   $E = 38.02'$   
 $S.E. = 0.040'/ft.$   
 Attain Sta. 66+66 to Sta. 67+37  
 Remove Sta. 69+06 to Sta. 69+77

ROUTE	SECTION	COUNTY	TOTAL SHEETS	SHEET NO.
FAS 2934	09-00043-00-SC	HARDIN	11	6
PROJECT NO. ARA-2934 (108)			CONTRACT NO. 99409	



Sta 67+89 - Exist 18" x 24' CMP - 16" Rt For  
 Add P Cul, CI D, Ty 1 18" - 5 Ft to DS (Rt) end

Sta 71+43 - Exist 18" x 24' CMP - 10" Lt For  
 To remain

SCALES:  
 1" = 200' HOR  
 1" = 20' VER

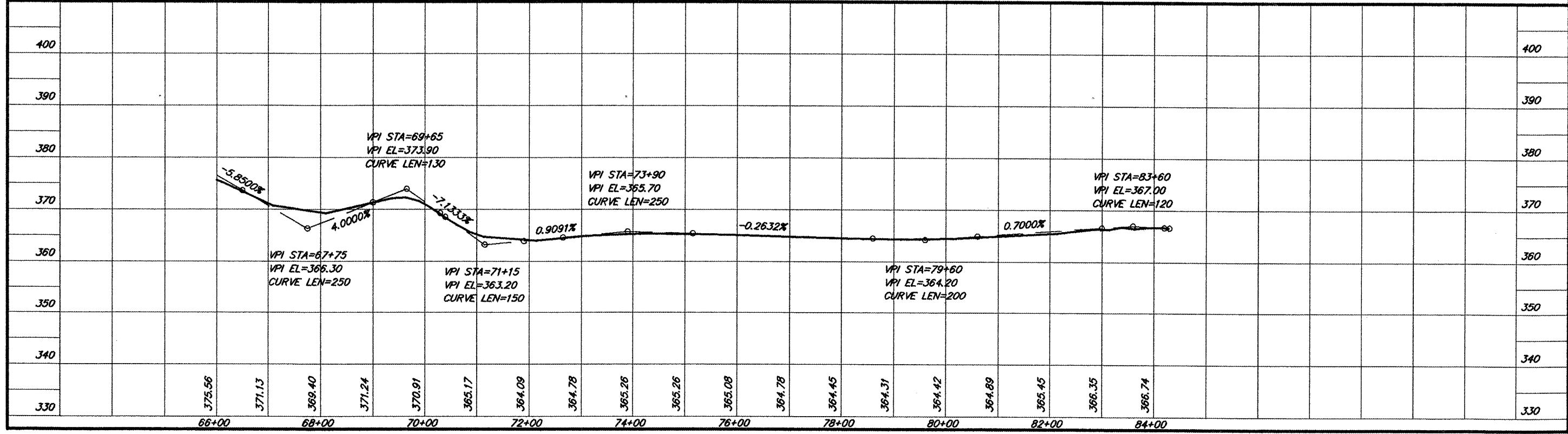
**CURVE DATA - PI STA=71+13.56**  
 $\Delta = 64^{\circ}27'25''$   $T = 122.93'$   
 $D = 29^{\circ}22'57''$   $L = 219.37'$   
 $R = 195.00'$   $E = 35.52'$   
 $S.E. = 0.037'/ft.$   
 Attain Sta. 69+77 to Sta. 70+40  
 Remove Sta. 71+95 to Sta. 72+58

**CURVE DATA - PI STA=73+38.17**  
 $\Delta = 2^{\circ}33'39''$   $T = 75.00'$   
 $D = 1^{\circ}42'27''$   $L = 149.98'$   
 $R = 3355.60'$   $E = 0.84'$   
 Normal Crown

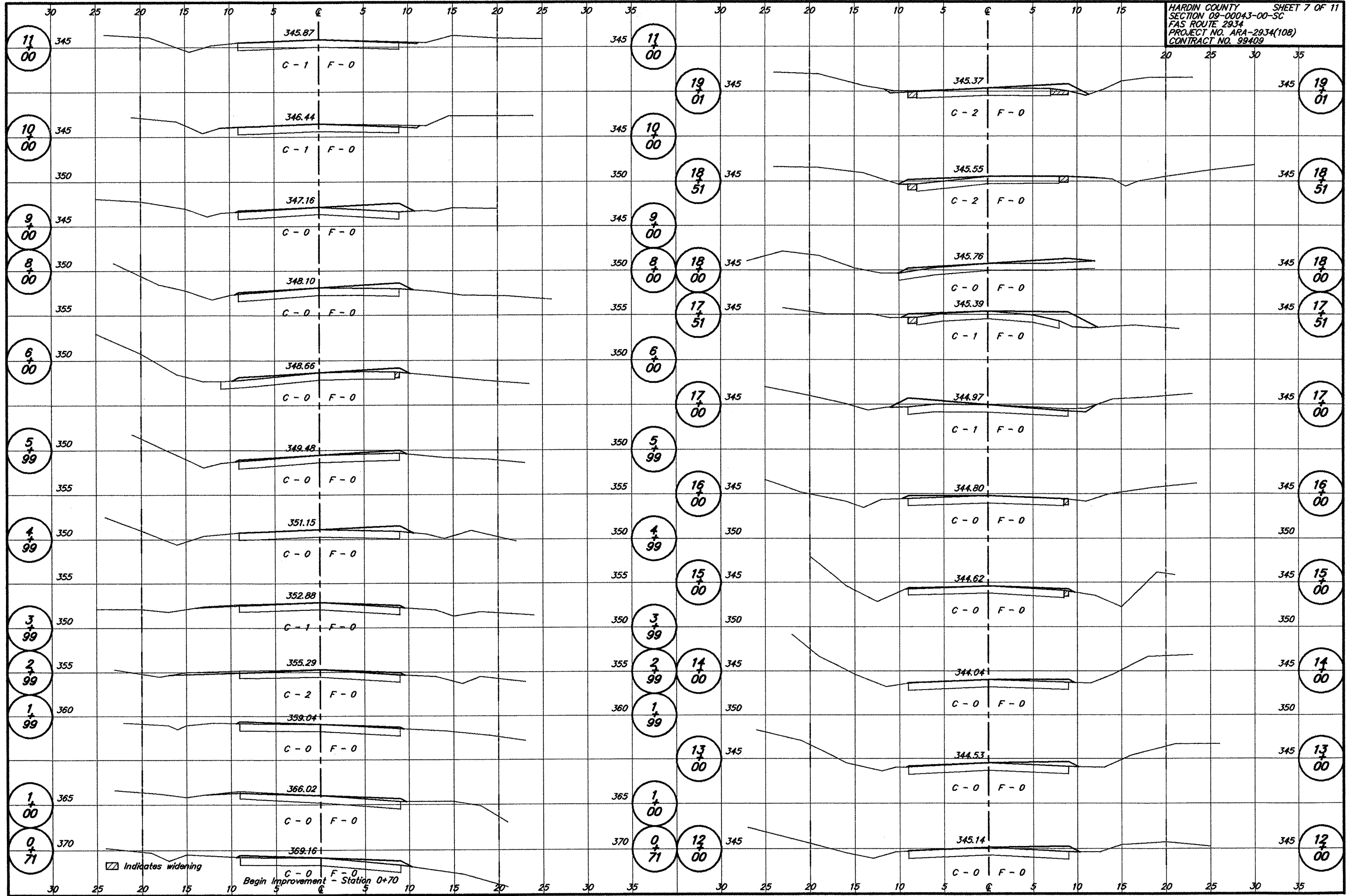
**CURVE DATA - PI STA=76+55.09**  
 $\Delta = 1^{\circ}55'50''$   $T = 74.99'$   
 $D = 1^{\circ}17'14''$   $L = 149.98'$   
 $R = 4451.02'$   $E = 0.63'$   
 Normal Crown

**CURVE DATA - PI STA=82+10.36**  
 $\Delta = 5^{\circ}19'24''$   $T = 89.63'$   
 $D = 2^{\circ}58'19''$   $L = 179.12'$   
 $R = 1927.92'$   $E = 2.08'$   
 $S.E. = 0.016'/ft.$   
 Attain Sta. 80+86 to Sta. 81+28  
 Remove Sta. 82+58 to Sta. 83+00

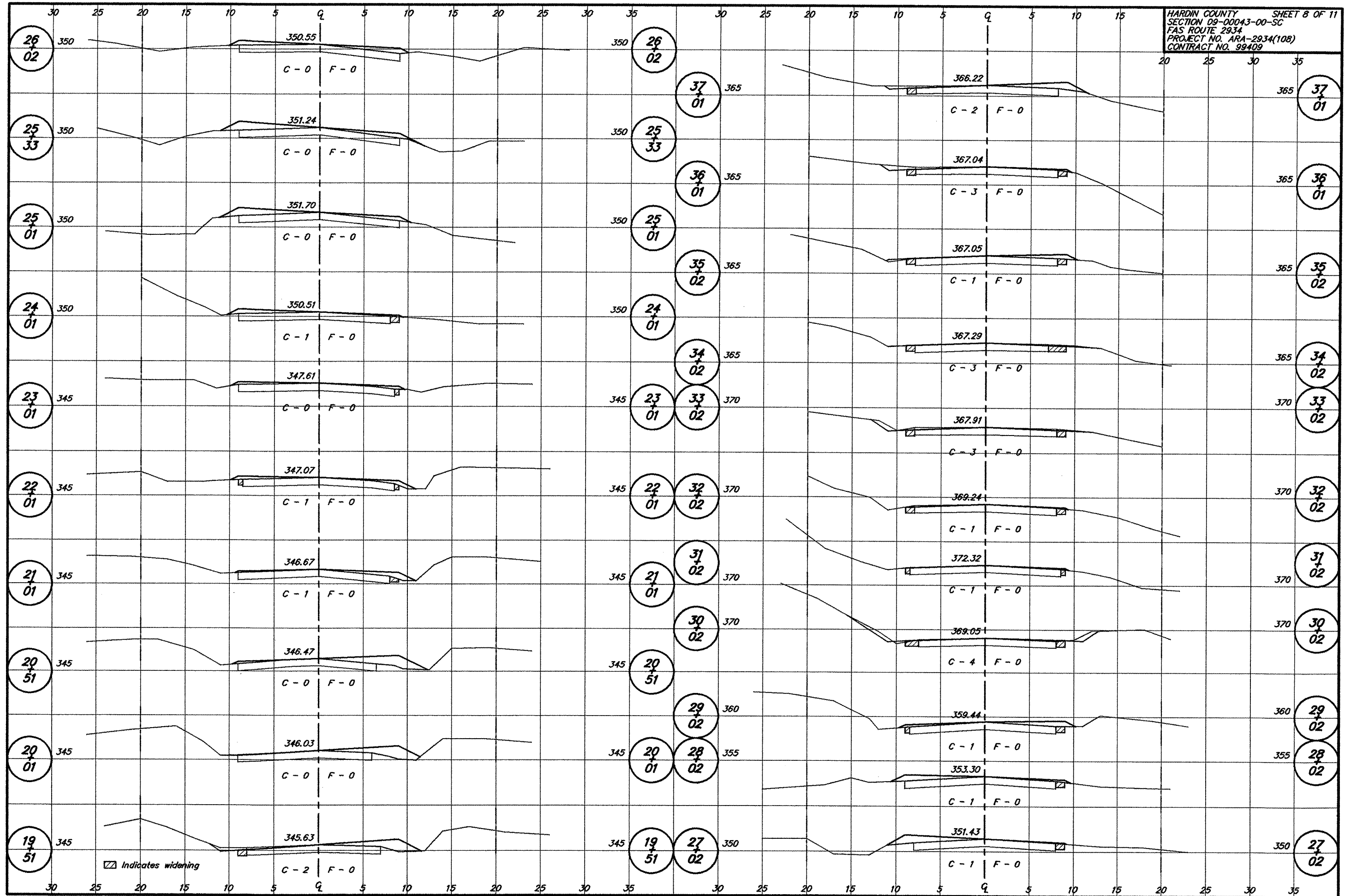
**CURVE DATA - PI STA=83+48.76**  
 $\Delta = 16^{\circ}48'18''$   $T = 48.89'$   
 $D = 17^{\circ}18'38''$   $L = 97.08'$   
 $R = 330.99'$   $E = 3.59'$   
 $S.E. = 0.040'/ft.$   
 Attain Sta. 83+00 to Sta. 83+48  
 Remove Sta. 83+79 to Sta. 84+54



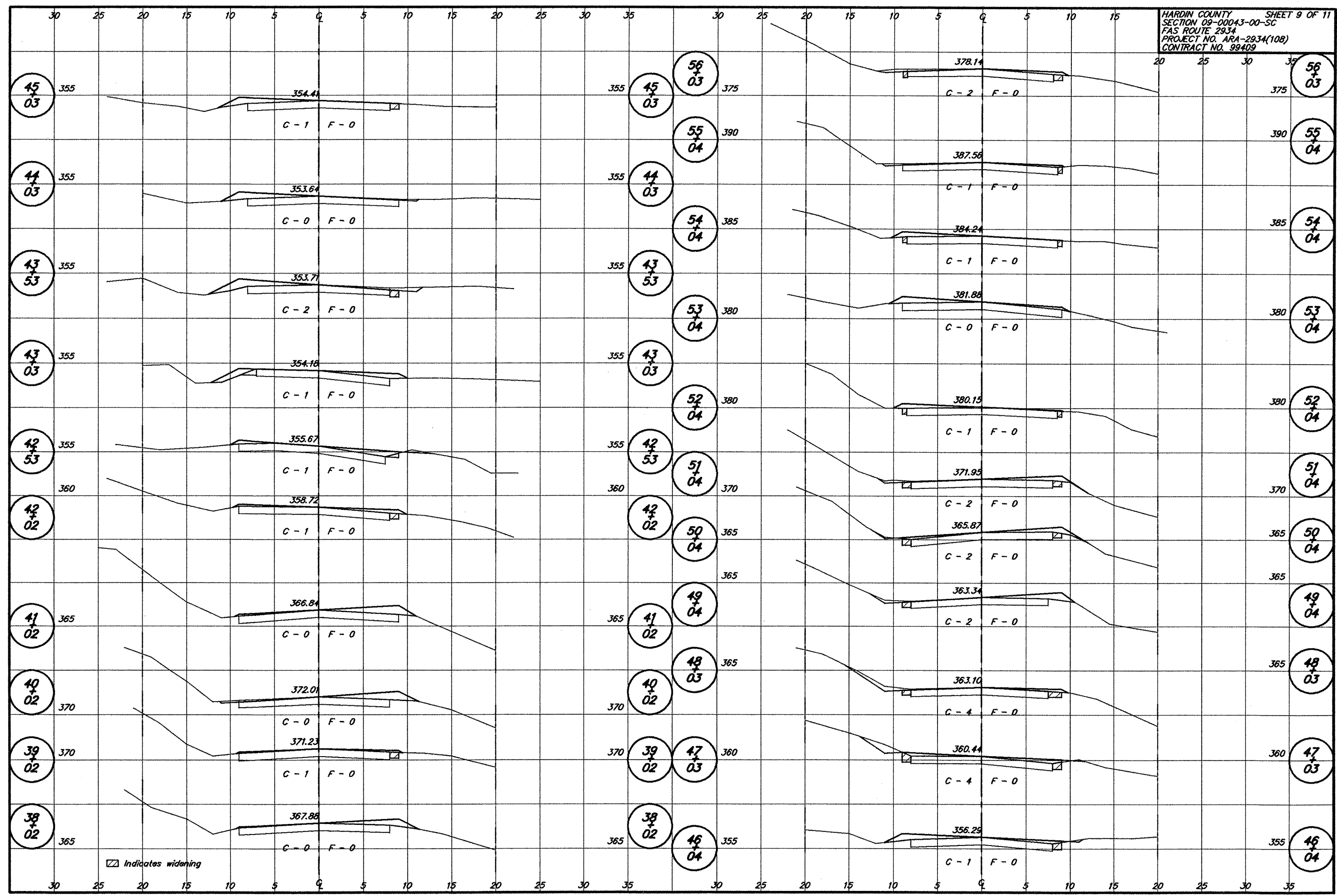
PLAN & PROFILE STA. 66+00 - STA. 85+00

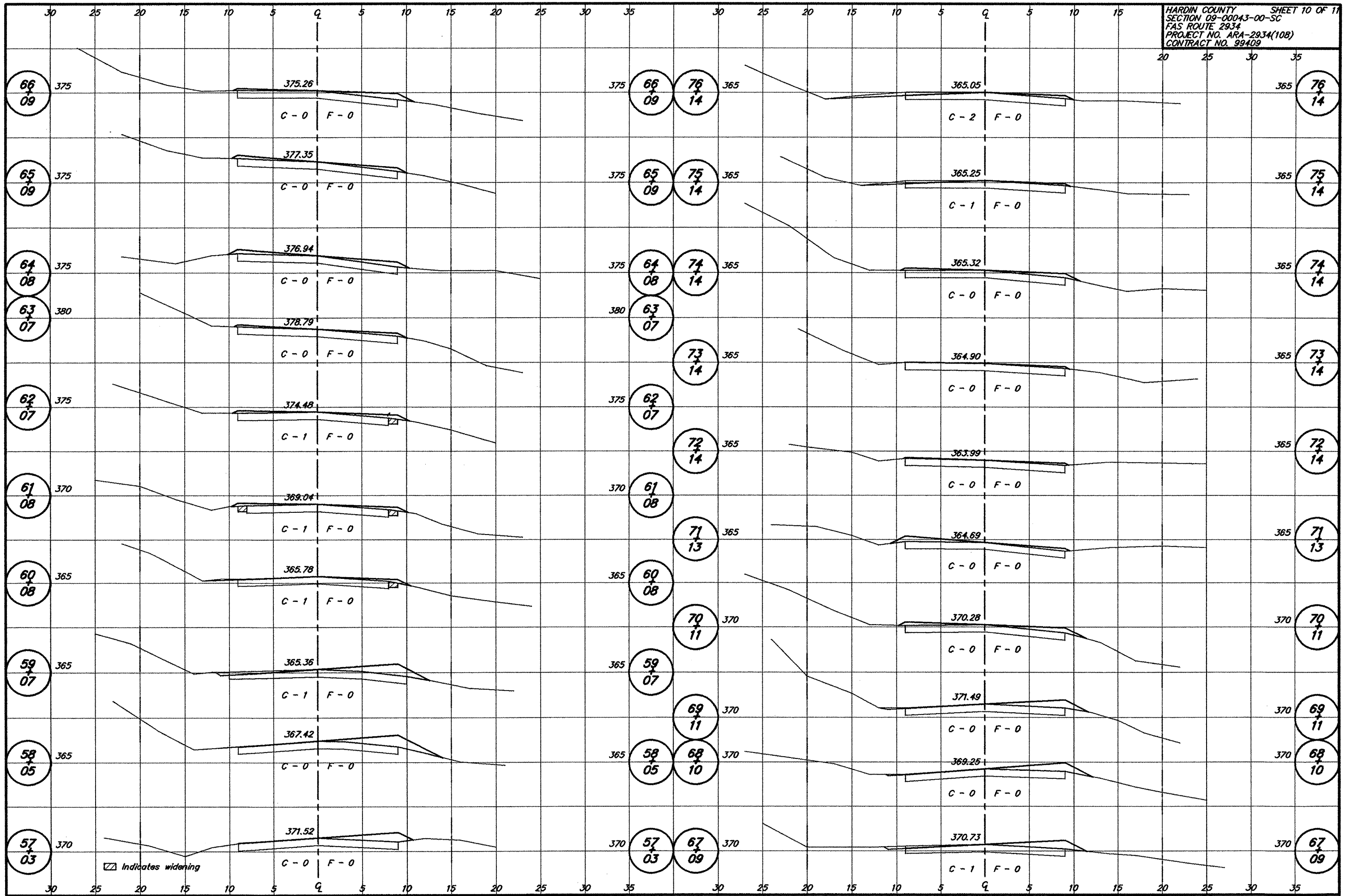












Indicates widening

