

CONSTRUCTION PLANS FOR GALESBURG MUNICIPAL AIRPORT

GALESBURG, KNOX COUNTY, ILLINOIS

REHABILITATE T-HANGAR AREA ACCESS PAVEMENT

SUMMARY OF QUANTITIES				
ITEM NO.	DESCRIPTION	UNIT	AS BID QUANTITY	AS BUILT QUANTITY
AR152410	UNCLASSIFIED EXCAVATION	CU. YD.	20	
AR209510	CRUSHED AGGREGATE BASE COURSE	TON	213	
AR209650	AGGREGATE BASE PREPARATION	SQ. YD.	6,924	
AR401610	BITUMINOUS SURFACE COURSE	TON	1,614	
AR401901	REMOVE BITUMINOUS SURFACE COURSE	SQ. YD.	6,942	
AR602510	BITUMINOUS PRIME COAT	GAL.	2,455	
AR603510	BITUMINOUS TACK COAT	GAL.	210	
AR901510	SEEDING	ACRE	0.1	

ILLINOIS PROJECT NO. GBG-3955
AIP PROJECT NO. 3-17-0047-B13

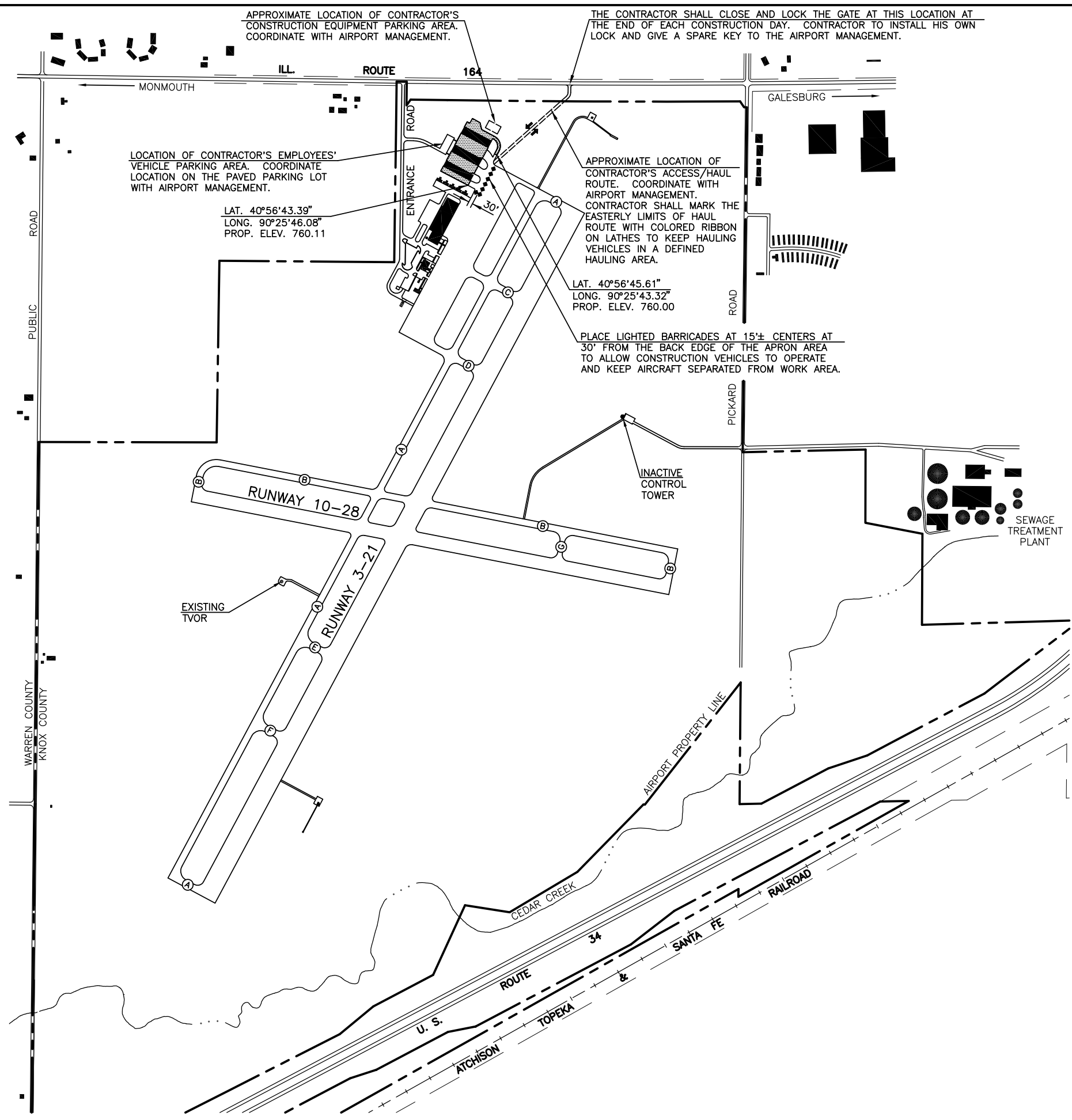
MARCH 19, 2010




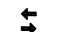

VICINITY MAP

INDEX OF SHEETS	
NO.	DESCRIPTION
1	COVER SHEET
2	IMPROVEMENT AND SAFETY PLAN
3	TYPICAL SECTION AND SPECIAL DETAIL
4	T-HANGAR PAVEMENT ELEVATIONS

	PLANS PREPARED BY : HUTCHISON ENGINEERING, INC. JACKSONVILLE, ILLINOIS	CITY OF GALESBURG, ILLINOIS
	EXPIRES 11/30/2011 ENGINEER'S SEAL	SUBMITTED <i>Gary L. Hutchison</i> DATE <i>February 25, 2010</i>



LEGEND

-  REHABILITATE T-HANGAR AREA ACCESS PAVEMENT
-  CONTRACTOR'S ACCESS HAUL ROUTE
-  LOCATION OF LIGHTED BARRICADES (USING FLASHING RED LIGHTS)

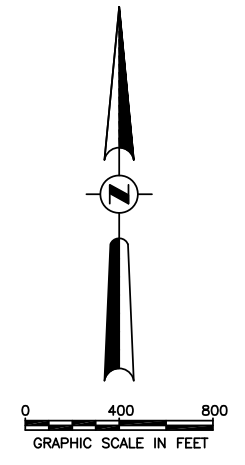
GENERAL NOTES

1. THE CONTRACTOR SHALL BE RESPONSIBLE FOR PROTECTING UTILITY PROPERTY FROM CONSTRUCTION OPERATIONS. PRIOR TO STARTING WORK, THE CONTRACTOR SHALL CONTACT J.U.L.I.E. (JOINT UTILITY LOCATING INFORMATION FOR EXCAVATORS) PHONE 1-800-892-0123 TO ARRANGE FOR LOCATION OF UTILITIES IN THE WORK AREA. A MINIMUM OF FORTY-EIGHT HOURS ADVANCE NOTICE IS REQUIRED FOR NON-EMERGENCY WORK.

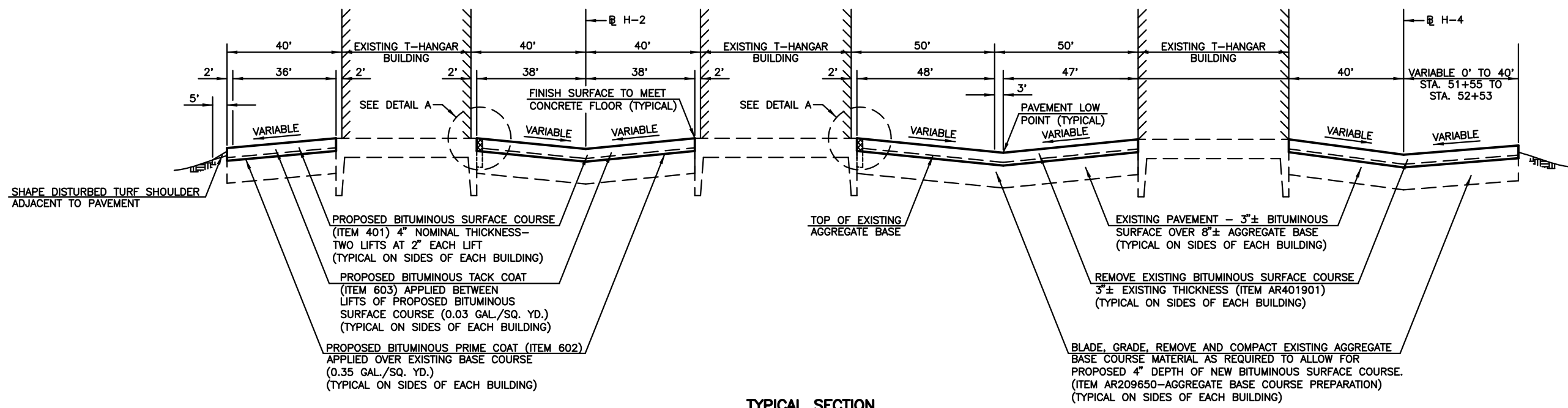
COUNTY - KNOX
 CITY - GALESBURG
 TOWNSHIP - T. 11 N., R. 1 E. 4th P.M.
 SECTION NO. - 18 & 19

CONSTRUCTION PROCEDURE NOTES

1. ALL CONTRACTOR EMPLOYEES WILL PARK THEIR PERSONAL VEHICLES IN THE AREA DESIGNATED BY THE AIRPORT MANAGER FOR USE AS A VEHICLE PARKING AREA. THE CONTRACTOR WILL BE RESPONSIBLE FOR TRANSPORTING EMPLOYEES TO THE PROPOSED CONSTRUCTION SITE. ONLY AUTHORIZED CONTRACTOR VEHICLES WILL BE ALLOWED ON THE AIR OPERATIONS AREA OF THE AIRPORT AND ON THE CONSTRUCTION SITE.
2. THE CONTRACTOR SHALL FURNISH ALL EMPLOYEES WITH SOME TYPE OF TAG OR GARMENT TO IDENTIFY THEM AS BEING PART OF THE CONSTRUCTION CREW.
3. FLAGS WILL BE REQUIRED ON ALL CONTRACTOR'S VEHICLES AND EQUIPMENT USED ON THE AIRPORT OPERATIONS AREA AND CONSTRUCTION SITE. THE FLAGS SHALL BE THREE (3) FOOT SQUARE CHECKERED FLAGS (INTERNATIONAL ORANGE AND WHITE) DISPLAYED IN FULL VIEW ABOVE THE VEHICLE.
4. THE CONTRACTOR WILL USE THE DESIGNATED HAUL ROUTE AND VEHICLE PARKING AREA SHOWN ON THIS SHEET. IT WILL BE THE CONTRACTOR'S RESPONSIBILITY TO MAINTAIN THE DESIGNATED HAUL ROUTE AND VEHICLE PARKING AREA FOR THE DURATION OF THE PROJECT. ANY DAMAGE TO EXISTING PAVEMENTS USED TO HAUL MATERIAL TO THE CONSTRUCTION SITE WILL BE REPAIRED BY THE CONTRACTOR AT HIS OWN EXPENSE TO THE SATISFACTION OF THE AIRPORT MANAGER AND THE RESIDENT ENGINEER.
5. THE CONTRACTOR SHALL FURNISH, MAINTAIN, AND REMOVE ALL BARRICADES REQUIRED TO DELINEATE THE WORK AREA AND KEEP AIRCRAFT FROM ENCRANCHING INTO SAID WORK AREA. THIS REQUIREMENT SHALL BE CONSIDERED INCIDENTAL TO THE CONTRACT AND NO ADDITIONAL COMPENSATION WILL BE ALLOWED.
6. CONSTRUCTION ACTIVITY CONTROL AND OPERATION AREA PROTECTION SHALL BE ACCOMPLISHED IN ACCORDANCE WITH FAA ADVISORY CIRCULAR NO. 150/5370-2E.
7. THE MAXIMUM CONSTRUCTION EQUIPMENT HEIGHT UTILIZED ON THE AIRPORT FOR THIS PROJECT SHALL BE 30'.
8. THIS PROJECT CONSISTS OF WORK TO REHABILITATE T-HANGAR AREA ACCESS PAVEMENT.
9. PRIOR TO THE OPERATION OF ANY CONSTRUCTION VEHICLES WITHIN THE AIR OPERATIONS AREA, IT WILL BE REQUIRED THAT THE CONTRACTOR RECEIVE TRAINING FROM THE AIRPORT MANAGEMENT REGARDING PROCEDURES FOR VEHICLE OPERATIONS TO ENSURE AIRCRAFT SAFETY DURING CONSTRUCTION. IT WILL BE REQUIRED THAT THE CONTRACTOR RECEIVE PERMISSION FROM THE AIRPORT MANAGEMENT IN ADVANCE OF ANY ACTIVITY SPECIFIC TO THE DAY, TIME AND EXACT PURPOSE OF ANY NEED TO ENTER THE AIRPORT OPERATIONS AREA.
10. THIS PROJECT WILL DISTURB LESS THAN 1 ACRE OF LAND.



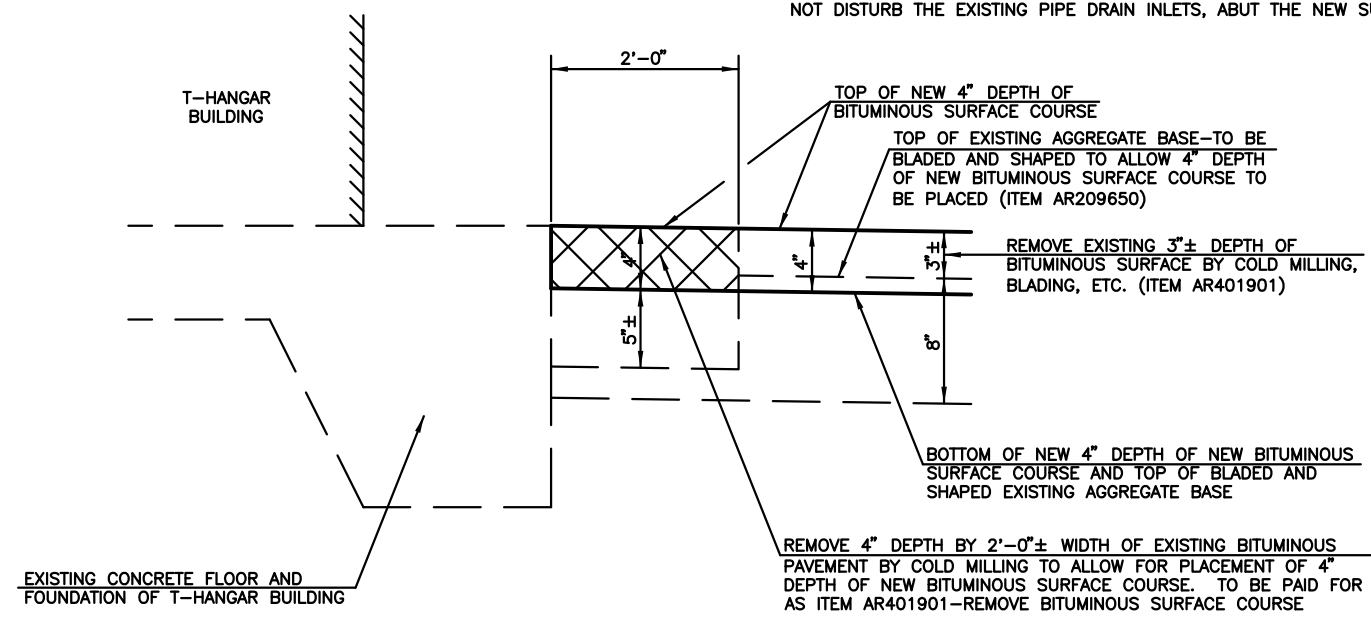
GALESBURG MUNICIPAL AIRPORT GALESBURG, ILLINOIS	
IMPROVEMENT AND SAFETY PLAN	
HUTCHISON ENGINEERING, INC. JACKSONVILLE, ILLINOIS	
DRAWN BY: R.L.R. DATE: FEBRUARY, 2010	ILL. PROJ. NO. GBG-3955 AIP PROJ. NO. 3-17-0047-B13



TYPICAL SECTION
ACCESS PAVEMENT FOR T-HANGARS
NOT TO SCALE

GENERAL NOTE : THE DISTURBED TURF SHOULDER ADJACENT TO THE NEWLY SURFACED AND/OR EXPANDED PAVEMENT SHALL BE SHAPED AS DIRECTED BY THE ENGINEER USING THE EXCAVATED MATERIAL OBTAINED FROM THE PAVEMENT EXPANSION. ANY EXCESS EXCAVATED MATERIAL REMAINING UPON COMPLETION OF THE SHOULDER SHAPING SHALL BE DISPOSED OF OFF THE AIRPORT SITE BY THE CONTRACTOR. THIS WORK SHALL BE CONSIDERED INCIDENTAL TO UNCLASSIFIED EXCAVATION (ITEM 152).

NOTE : THIS DETAIL APPLIES TO THE 2' WIDE AREA ADJACENT TO AND THE FULL LENGTH OF THE T-HANGAR BUILDING FOUNDATIONS LOCATED LT. H-2 AND LT. H-3 THAT ARE DIRECTLY OVER THE EXISTING PIPE DRAINS AND INLETS THAT RUN PARALLEL TO SAID T-HANGARS. DO NOT DISTURB THE EXISTING PIPE DRAIN INLETS, ABUT THE NEW SURFACE COURSE UP TO THEM.



DETAIL A
NOT TO SCALE

GALESBURG MUNICIPAL AIRPORT GALESBURG, ILLINOIS	
TYPICAL SECTION AND SPECIAL DETAIL	
HUTCHISON ENGINEERING, INC. JACKSONVILLE, ILLINOIS	
DRAWN BY: RLR DATE : FEBRUARY, 2010	ILL. PROJ. NO. GBC-3955 AIP PROJ. NO. 3-17-0047-B13

GENERAL NOTES

- ELEVATIONS SHOWN ARE TOP OF FINISHED SURFACE ELEVATIONS. (E) SHOWN AFTER AN ELEVATION DENOTES AN EXISTING ELEVATION.
- WHERE PROPOSED BITUMINOUS SURFACE ABUTS EXISTING PAVEMENT, THE EXISTING PAVEMENT SHALL BE CUT TO PRODUCE A STRAIGHT VERTICAL FACE TO ABUT THE PROPOSED SURFACE TO. PRIOR TO SURFACING, THE VERTICAL FACES OF ALL ABUTTING EXISTING PAVEMENT SHALL BE PAINTED WITH LIQUID ASPHALT. COST OF THIS WORK SHALL BE CONSIDERED INCIDENTAL TO THE CONTRACT.
- THE EXISTING BITUMINOUS SURFACE SHALL BE REMOVED AND THE EXISTING AGGREGATE BASE SHALL BE BLADED AND SHAPED AS REQUIRED TO PROVIDE FOR THE APPLICATION OF A 4" THICKNESS OF PROPOSED BITUMINOUS SURFACE TO THE FINISHED ELEVATIONS SHOWN. THE COST OF REMOVAL OF THE EXISTING AGGREGATE BASE MATERIAL, WHERE NECESSARY, SHALL BE CONSIDERED INCIDENTAL TO AGGREGATE BASE PREPARATION.
- ALL REMOVED BITUMINOUS SURFACE MATERIAL AND BLADED/REMOVED AGGREGATE BASE MATERIAL SHALL BE DISPOSED OF BY THE CONTRACTOR OFF THE AIRPORT SITE AT AN APPROVED SITE PROVIDED BY THE CONTRACTOR. THE COST OF THIS DISPOSAL SHALL BE INCLUDED IN THE COST OF THE AGGREGATE BASE PREPARATION AND THE COST TO REMOVE BITUMINOUS SURFACE COURSE.
- IN LOCATIONS WHERE UNSTABLE EXISTING AGGREGATE BASE COURSE IS ENCOUNTERED REQUIRING REPAIR OF THE BASE, THE AREAS DESIGNATED BY THE RESIDENT ENGINEER SHALL BE EXCAVATED AND THE REMOVED MATERIAL DISPOSED OF. THE AREAS SHALL BE REPLACED WITH A SEVEN (7) INCH DEPTH OF NEW AGGREGATE BASE MATERIAL MEETING THE REQUIREMENTS OF ITEM 209. THE COST OF THE REMOVAL AND DISPOSAL OF THE EXISTING BASE SHALL BE CONSIDERED INCIDENTAL TO AGGREGATE BASE PREPARATION. FURNISHING, PLACING AND COMPACTING NEW BASE MATERIAL SHALL BE PAID FOR AT THE UNIT PRICE BID FOR CRUSHED AGGREGATE BASE COURSE.
- THE QUANTITY FOR CRUSHED AGGREGATE BASE COURSE THAT IS INCLUDED IN THESE CONSTRUCTION PLANS IS ESTIMATED IN ORDER TO ESTABLISH A WORK ITEM BID PRICE. THE QUANTITY WILL BE ADJUSTED BY THE RESIDENT ENGINEER DURING CONSTRUCTION BASED UPON FIELD INSPECTION AND IDENTIFICATION OF LOCATIONS REQUIRING REPAIR OF THE EXISTING AGGREGATE BASE. THE RIGHT IS RESERVED TO INCREASE, DECREASE OR ELIMINATE THE QUANTITY FOR CRUSHED AGGREGATE BASE COURSE WITH NO UNIT PRICE ADJUSTMENT FOR THE ALTERED CONTRACT ITEM BEING ALLOWED.
- THE CONTRACTOR SHALL EXERCISE CAUTION DURING CONSTRUCTION OPERATIONS SO AS NOT TO DAMAGE THE EXISTING HANGAR BUILDINGS. ANY DAMAGE TO THE BUILDINGS SHALL BE REPAIRED BY THE CONTRACTOR AT HIS OWN EXPENSE TO THE SATISFACTION OF THE ENGINEER AND THE AIRPORT MANAGER.

RECOMMENDED CONSTRUCTION SEQUENCE NOTES

- IT WILL BE NECESSARY THAT THE CONTRACTOR PERFORM THIS CONSTRUCTION IN PHASES SO AS TO REFRAIN FROM DENYING ACCESS TO ALL THE T-HANGAR UNITS FOR THE ENTIRE DURATION OF THE CONSTRUCTION PERIOD. THE SEQUENCING OF CONSTRUCTION OPERATIONS CONTAINED IN THESE NOTES IS RECOMMENDED FOR THE PURPOSE OF ACCOMPLISHING THE WORK.
- T-HANGAR ACCESS PAVEMENT REHABILITATION WORK SHALL BE PERFORMED IN SUCH A MANNER THAT THE ACCESS PAVEMENT THAT IS CLOSED FOR WORK SHALL NOT REMAIN CLOSED MORE THAN FIVE CONSECUTIVE DAYS AT A TIME.
- THE T-HANGAR ACCESS PAVEMENTS 2' LT. TO 36' RT. OF BASELINE H-1 AND 38' LT. & RT. OF BASELINE H-2 SHALL BE CLOSED AND BITUMINOUS SURFACE REMOVAL, AGGREGATE BASE PREPARATION AND THE APPLICATION OF THE FIRST LIFT OF NEW BITUMINOUS SURFACE COURSE PERFORMED. OPEN THESE PAVEMENTS FOR LIMITED USE BY THE T-HANGAR TENANTS.
- CLOSE THE T-HANGAR ACCESS PAVEMENTS 50' LT. & RT. OF BASELINE H-3 AND 40' LT. & RT. OF BASELINE H-4. ACCOMPLISH THE BITUMINOUS SURFACE REMOVAL, AGGREGATE BASE PREPARATION AND THE APPLICATION OF THE FIRST LIFT OF NEW BITUMINOUS SURFACE COURSE. OPEN THESE PAVEMENTS FOR LIMITED USE BY THE T-HANGAR TENANTS.
- CLOSE EACH T-HANGAR ACCESS PAVEMENT IN SEQUENCE TO APPLY THE TOP LIFT OF NEW BITUMINOUS SURFACE COURSE. SCHEDULE THE WORK SO AS TO COMPLETE THE WORK AS EXPEDITIOUSLY AS POSSIBLE AND TO RESULT IN OPENING EACH CLOSED PAVEMENT AT THE END OF ONE DAY MINIMUM TO TWO DAYS MAXIMUM.
- ALTERNATE SEQUENCES SUGGESTED BY THE CONTRACTOR WILL BE REVIEWED AND, IF APPROVED BY THE ENGINEER AND AIRPORT MANAGER, WILL BE PERMITTED.

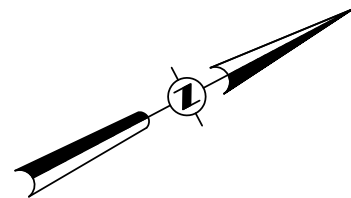
SEEDING NOTES

IT IS ESTIMATED THAT A 5' WIDTH OF TURF AREA ADJACENT TO THE FINISHED PAVEMENT EDGES WILL BE DISTURBED DURING CONSTRUCTION. THESE AREAS SHALL BE LIMED, FERTILIZED, AND SEEDED AND SHALL CONSTITUTE THE AREAS DESIGNATED FOR PAYMENT.

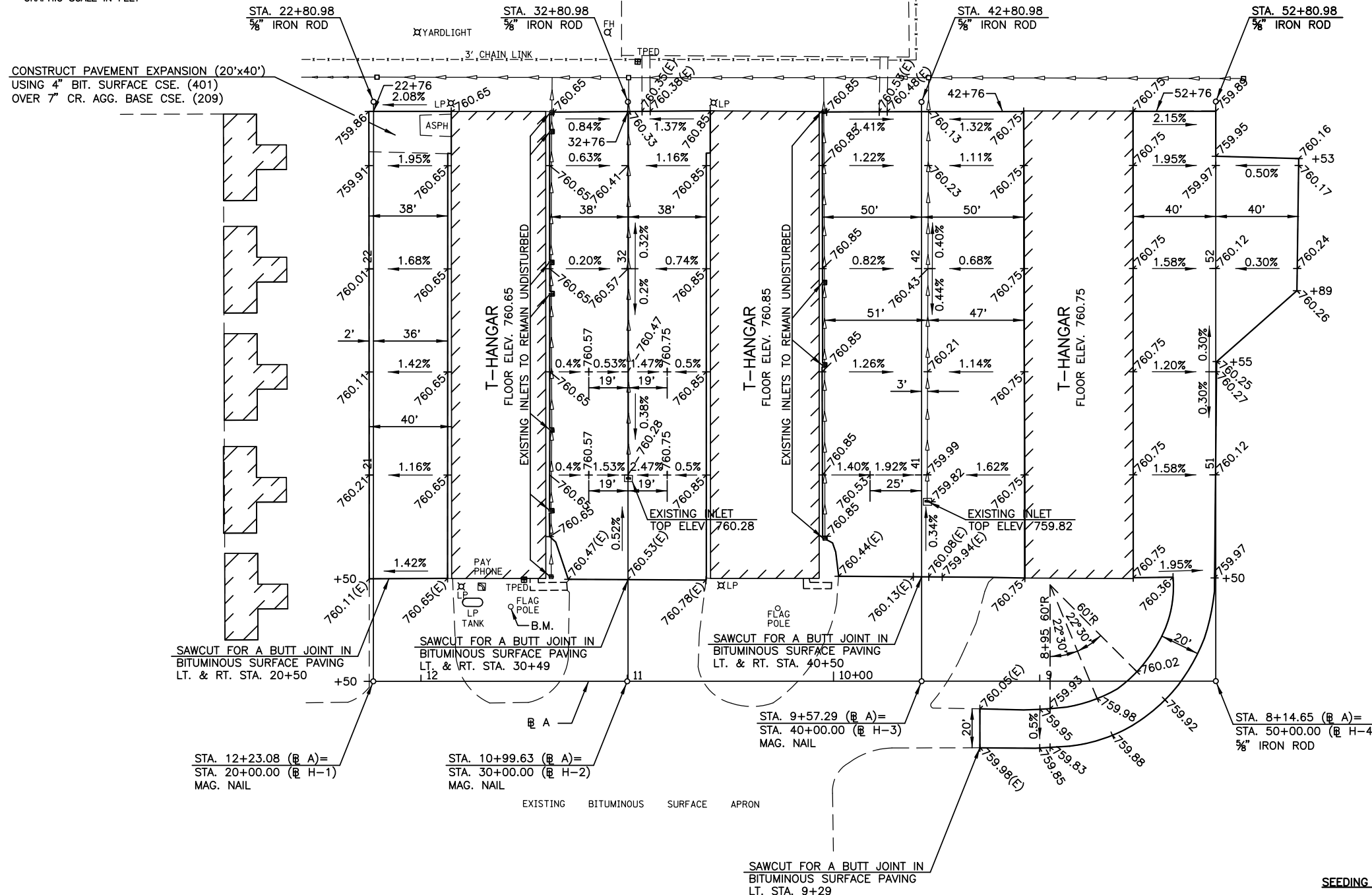
ALL OTHER AREAS DISTURBED BY THE CONTRACTOR INCLUDING THE CONTRACTOR'S PARKING AREA SHALL BE REGRADED AND RESEEDED AND/OR RESTORED TO THEIR ORIGINAL CONDITION BY THE CONTRACTOR AT HIS OWN EXPENSE UPON COMPLETION OF THE IMPROVEMENTS.

A QUANTITY OF 0.1 AC. CONSTITUTES THE AREA FOR PAYMENT.

B.M. - CHISELED "□" ON SOUTH SIDE OF CONC. BASE OF FLAGPOLE
36' RT. STA. 11+57
ELEV. 760.55



0 30 60
GRAPHIC SCALE IN FEET



UNCLASSIFIED EXCAVATION

LT. & RT. STA. 22+56 TO STA. 22+76 = 20 CU. YD.

NOTE : THE UNCLASSIFIED EXCAVATION SHALL BE USED TO SHAPE THE EARTH SHOULDERS ADJACENT TO THE FINISHED PAVEMENT EDGES AND/OR BE WASTED BY THE CONTRACTOR OFF THE AIRPORT.

GALESBURG MUNICIPAL AIRPORT GALESBURG, ILLINOIS	
T-HANGAR PAVEMENT ELEVATIONS	
HUTCHISON ENGINEERING, INC. JACKSONVILLE, ILLINOIS	
DRAWN BY: RLR DATE : FEBRUARY, 2010	ILL. PROJ. NO. GBC-3955 AIP PROJ. NO. 3-17-0047-B13