

STATE OF ILLINOIS
DEPARTMENT OF TRANSPORTATION

| F.A.I. RTE. | SECTION | COUNTY | TOTAL SHEETS | SHEET NO. |
|-------------|--------------------|----------|--------------------|-----------|
| 80 | (06-1, 2) SFY, CBL | BUREAU | 6 | 1 |
| | | ILLINOIS | CONTRACT NO. 66L32 | |

INDEX OF SHEETS

- 1 COVER SHEET
- 2 GENERAL NOTES
- 3 SUMMARY OF QUANTITIES
- 4 TYPICAL SECTIONS
- 5 SCHEDULES
- 6 DETAILS

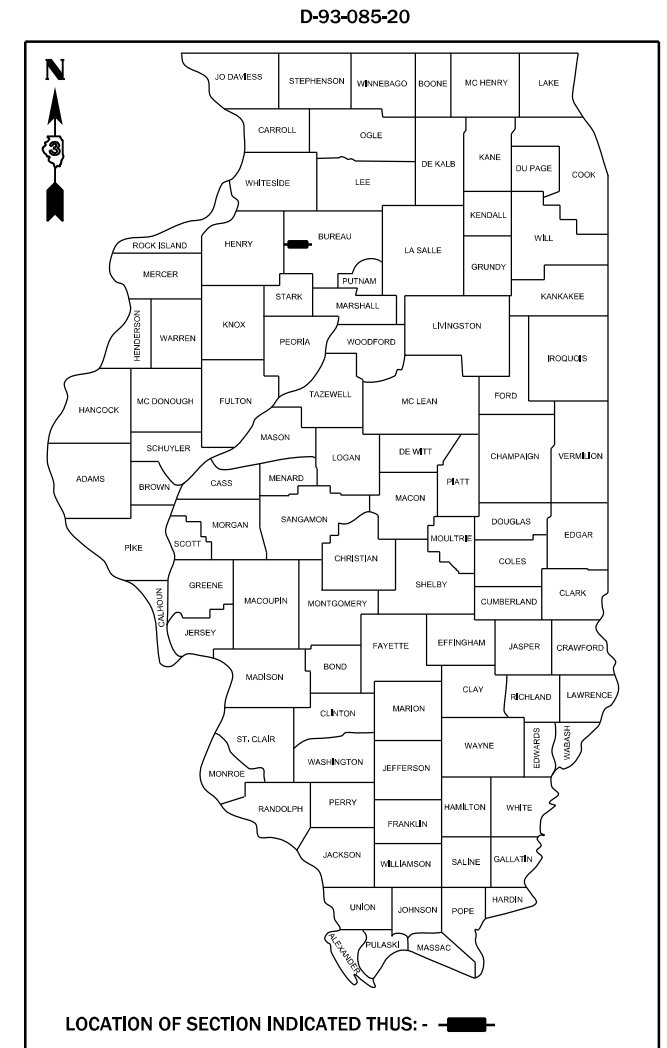
HIGHWAY STANDARDS

- 000001-08 STANDARD SYMBOLS, ABBREVIATIONS AND PATTERNS
- 001006 DECIMAL OF AN INCH AND OF A FOOT
- 701101-05 OFF-ROAD OPERATIONS, MULTILANE, 15' (4.5 m) TO 24" (600 mm) FROM PAVEMENT EDGE
- 701106-02 OFF-ROAD OPERATIONS, MULTILANE, MORE THAN 15' (4.5 m) AWAY
- 701400-10 APPROACH TO LANE CLOSURE, FREEWAY/EXPRESSWAY
- 701406-12 LANE CLOSURE, FREEWAY/EXPRESSWAY, DAY OPERATIONS ONLY
- 701901-08 TRAFFIC CONTROL DEVICES

PROPOSED HIGHWAY PLANS

FAI ROUTE 80 (I-80)
SECTION (06-1, 2) SFY, CBL
PROJECT: HSIP - L8J5 (373)
HIGH TENSION CABLE MEDIAN BARRIER
BUREAU COUNTY

C-93-120-20



I-80 - INTERSTATE
2019 ADT = 17,200
P.V. = 48.0% S.U. = 6.1% M.U. = 45.9%

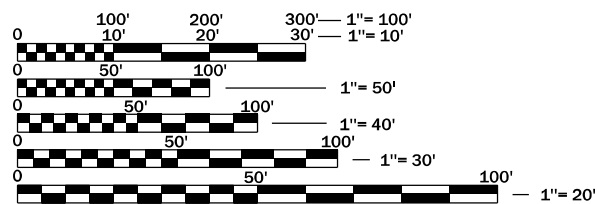
STATE OF ILLINOIS
DEPARTMENT OF TRANSPORTATION

SUBMITTED February 05, 20 21

[Signature]
REGIONAL ENGINEER

March 19, 2021
[Signature]
ENGINEER OF DESIGN AND ENVIRONMENT

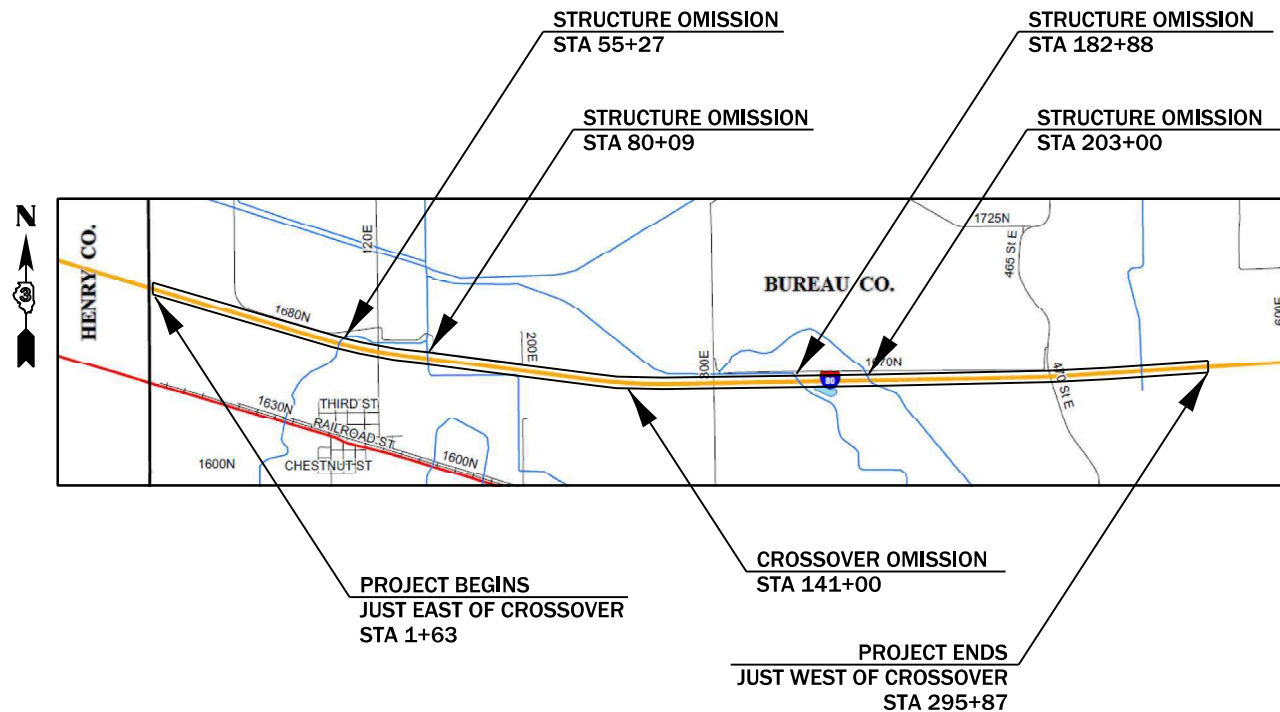
March 19, 2021
[Signature]
DIRECTOR OF HIGHWAYS PROJECT IMPLEMENTATION



FULL SIZE PLANS HAVE BEEN PREPARED USING STANDARD ENGINEERING SCALES. REDUCED SIZED PLANS WILL NOT CONFORM TO STANDARD SCALES. IN MAKING MEASUREMENTS ON REDUCED PLANS, THE ABOVE SCALES MAY BE USED.

J.U.L.I.E.
JOINT UTILITY LOCATION INFORMATION FOR EXCAVATION
1-800-892-0123
OR 811

PROJECT ENGINEER: JOE KANNEL, P.E.
UNIT CHIEF: MARC BUDZYNSKI, P.E.
DISTRICT 3 NO. (815) 434-6131
CONTRACT NO. 66L32



GROSS LENGTH = 29,424 FT. = 5.57 MILES
NET LENGTH = 27,633 FT. = 5.23 MILES

PRINTED BY THE AUTHORITY
OF THE STATE OF ILLINOIS

GENERAL NOTES

ABANDONED UNDERGROUND UTILITIES THAT CONFLICT WITH CONSTRUCTION SHALL BE DISPOSED OF OUTSIDE THE LIMITS OF THE RIGHT OF WAY ACCORDING TO ARTICLE 202.03 OF THE STANDARD SPECIFICATIONS AND AS DIRECTED BY THE ENGINEER. THIS WORK WILL NOT BE PAID FOR SEPARATELY, BUT WILL BE INCLUDED IN THE COST OF EARTH EXCAVATION.

THE FOLLOWING RATES OF APPLICATION HAVE BEEN USED IN CALCULATING PLAN QUANTITIES:

| | | |
|-----------------|-----|------------------|
| HMA RESURFACING | 112 | LBS / SQ YD / IN |
|-----------------|-----|------------------|

ALL DAMAGE TO DEPARTMENT OWNED UNDERGROUND FACILITIES, CAUSED BY THE CONTRACTOR SHALL BE REPAIRED TO THE SATISFACTION OF THE DEPARTMENT AT THE CONTRACTOR'S EXPENSE. THIS SHALL INCLUDE ALL TEMPORARY REPAIRS REQUIRED TO KEEP THE FACILITY OPERATIONAL WHILE MATERIAL IS BEING OBTAINED TO MAKE PERMANENT REPAIRS. SPLICING OF ELECTRIC CABLE WILL NOT BE ALLOWED. ELECTRIC CABLE SHALL BE REPLACED FROM POLE TO POLE OR CONTROLLER.

THE CONTRACTOR SHALL CONTACT JULIE AT LEAST 48 HOURS PRIOR TO EXCAVATION TO DETERMINE WHICH UTILITIES ARE IN THE AREA.

COMMITMENTS:

| HMA MIXTURE REQUIREMENT TABLE | |
|---|--------------------------|
| LOCATION(S) : | ENTIRE PROJECT |
| MIXTURE USE(S) : | HMA MOW STRIP |
| BINDER GRADE (PG) : | PG 64-22 |
| DESIGN AIR VOIDS : | 4.0% @ N50 |
| MIXTURE COMPOSITION: (MIXTURE GRADATION) | IL-9.5 |
| FRICTION AGGREGATE : | MIXTURE C |
| MIXTURE WEIGHT : | 112.0 LB/SY/IN |
| QUALITY MANAGEMENT PROGRAM: | QC/QA |
| SUBLOT SIZE : | N/A |
| DENSITY TEST METHOD: | SATISFACTION OF ENGINEER |

STATE OF ILLINOIS
DEPARTMENT OF TRANSPORTATION
DISTRICT THREE
AS BUILT INFORMATION

STATE OF ILLINOIS
DEPARTMENT OF TRANSPORTATION
DISTRICT THREE

SUPERVISING CONSTRUCTION FIELD ENGINEER

PREPARED BY: _____
DISTRICT STUDIES & PLANS ENGINEER

RESIDENT ENGINEER / TECHNICIAN

DATE: _____

START & END DATES
OF CONSTRUCTION:

EXAMINED BY: _____
DISTRICT CONSTRUCTION ENGINEER

INSPECTORS: _____

DISTRICT MATERIALS ENGINEER

DISTRICT OPERATIONS ENGINEER

MODEL: \\MODELM\MAHES
FILE: \\mahes\c:\p\work\abidab\budz\ynskim\070319\66L32-sh-covr.dgn

| | | |
|-------------------------------|------------|-----------|
| USER NAME = budzynskim | DESIGNED - | REVISED - |
| | DRAWN - | REVISED - |
| PLOT SCALE = 100,0000 ' / in. | CHECKED - | REVISED - |
| PLOT DATE = 2/5/2021 | DATE - | REVISED - |

**STATE OF ILLINOIS
DEPARTMENT OF TRANSPORTATION**

GENERAL NOTES

SCALE: SHEET OF SHEETS STA. TO STA.

| F.A.I. RTE. | SECTION | COUNTY | TOTAL SHEETS | SHEET NO. |
|---------------------------|--------------------|--------|--------------------|-----------|
| 80 | (06-1, 2) 5FY, CBL | BUREAU | 6 | 2 |
| ILLINOIS FED. AID PROJECT | | | CONTRACT NO. 66L32 | |

MODEL: \\MODELMAP\MS
FILE: \\map\c:\temp\work\aid\66L32\sh-cover.dgn

| | | |
|-------------------------------|------------|-----------|
| USER NAME = budzynskim | DESIGNED - | REVISED - |
| | DRAWN - | REVISED - |
| PLOT SCALE = 100.0000 ' / in. | CHECKED - | REVISED - |
| PLOT DATE = 2/5/2021 | DATE - | REVISED - |

**STATE OF ILLINOIS
DEPARTMENT OF TRANSPORTATION**

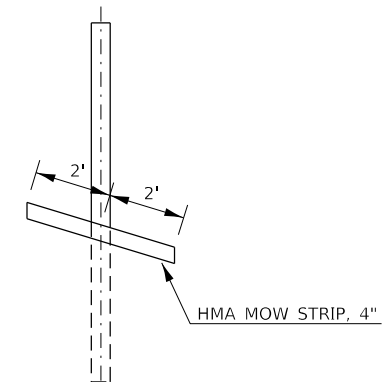
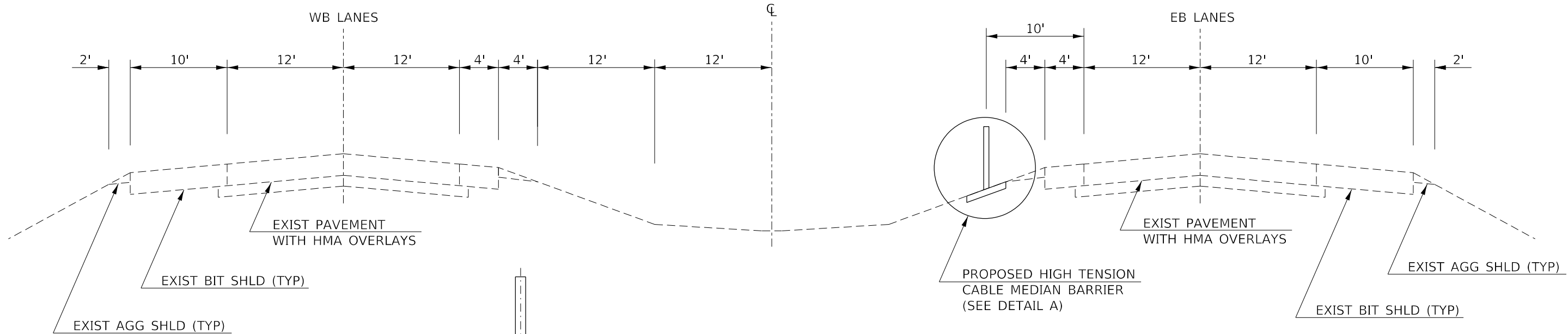
SUMMARY OF QUANTITIES

SCALE: SHEET OF SHEETS STA. TO STA.

| F.A.I. RTE. | SECTION | COUNTY | TOTAL SHEETS | SHEET NO. |
|---------------------------|--------------------|--------|--------------|-----------|
| 80 | (06-1, 2) 5FY, CBL | BUREAU | 6 | 3 |
| CONTRACT NO. 66L32 | | | | |
| ILLINOIS FED. AID PROJECT | | | | |

| CODE NO. | ITEM | UNIT | TOTAL QUANTITY | CONSTR. CODE | |
|------------|---|--------|----------------|----------------------|-------|
| | | | | 90% FED 10% STATE | |
| | | | | SAFETY | |
| | | | | 0021 | RURAL |
| 64401100 | HIGH TENSION CABLE MEDIAN BARRIER | FOOT | 27633 | | 27633 |
| 64401300 | HIGH TENSION CABLE MEDIAN BARRIER TERMINALS | EACH | 12 | | 12 |
| * 66900200 | NON-SPECIAL WASTE DISPOSAL | CU YD | 1365 | | 1365 |
| * 66900530 | SOIL DISPOSAL ANALYSIS | EACH | 5 | | 5 |
| * 66901001 | REGULATED SUBSTANCES PRE-CONSTRUCTION PLAN | LSUM | 1 | | 1 |
| * 66901003 | REGULATED SUBSTANCES FINAL CONSTRUCTION REPORT | LSUM | 1 | | 1 |
| * 66901006 | REGULATED SUBSTANCES MONITORING | CAL DA | 10 | | 10 |
| 67100100 | MOBILIZATION | L SUM | 1 | | 1 |
| 70100700 | TRAFFIC CONTROL AND PROTECTION, STANDARD 701406 | L SUM | 1 | | 1 |
| 70107025 | CHANGEABLE MESSAGE SIGN | CAL DA | 28 | | 28 |
| * 72501100 | TERMINAL MARKER - POST MOUNTED | EACH | 12 | | 12 |
| * 78200021 | HIGH TENSION CABLE MEDIAN BARRIER REFLECTORS | EACH | 349 | | 349 |
| X0500002 | HOT-MIX ASPHALT MOW STRIP | SQ YD | 12281 | | 12281 |

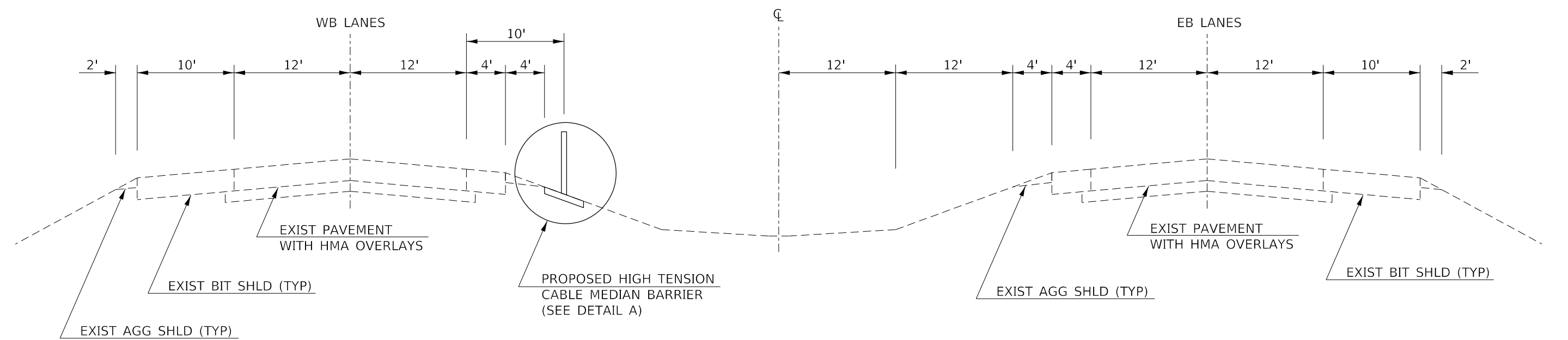
* SPECIALTY ITEM



DETAIL A
 NOTE: CABLE GUARDRAIL ADJACENT TO THE EB LANES WILL BE A MIRROR IMAGE OF THIS DETAIL

PROPOSED TYPICAL SECTION

STA 56+29 TO STA 74+98
 STA 80+98 TO STA 140+39
 STA 183+97 TO STA 198+51
 STA 204+23 TO STA 295+87



PROPOSED TYPICAL SECTION

STA 1+63 TO STA 54+24
 STA 141+62 TO STA 181+06

MODEL: I:\MODELS\MH\MS FILE: I:\MODELS\MH\MS\work\66l32\66l32-shl-cover.dgn

| | | |
|------------------------------|------------|-----------|
| USER NAME = budzynskim | DESIGNED - | REVISED - |
| | DRAWN - | REVISED - |
| PLOT SCALE = 100.0000' / in. | CHECKED - | REVISED - |
| PLOT DATE = 2/5/2021 | DATE - | REVISED - |

**STATE OF ILLINOIS
 DEPARTMENT OF TRANSPORTATION**

| | | | | |
|-------------------------|-------|----|--------|--------------|
| TYPICAL SECTIONS | | | | |
| SCALE: | SHEET | OF | SHEETS | STA. TO STA. |

| | | | | |
|---------------------------|--------------------|--------|--------------|-----------|
| F.A.I. RTE. | SECTION | COUNTY | TOTAL SHEETS | SHEET NO. |
| 80 | (06-1, 2) 5FY, CBL | BUREAU | 6 | 4 |
| CONTRACT NO. 66L32 | | | | |
| ILLINOIS FED. AID PROJECT | | | | |

