

STATE OF ILLINOIS
DEPARTMENT OF TRANSPORTATION

F.A.I. RTE.	SECTION	COUNTY	TOTAL SHEETS	SHEET NO.
39	(50-7, 8) SFY, CBL	LASALLE	7	1
		ILLINOIS	CONTRACT NO. 66L33	

INDEX OF SHEETS

- 1 COVER SHEET
- 2 GENERAL NOTES
- 3 SUMMARY OF QUANTITIES
- 4 TYPICAL SECTIONS
- 5 SCHEDULES
- 6-7 DETAILS

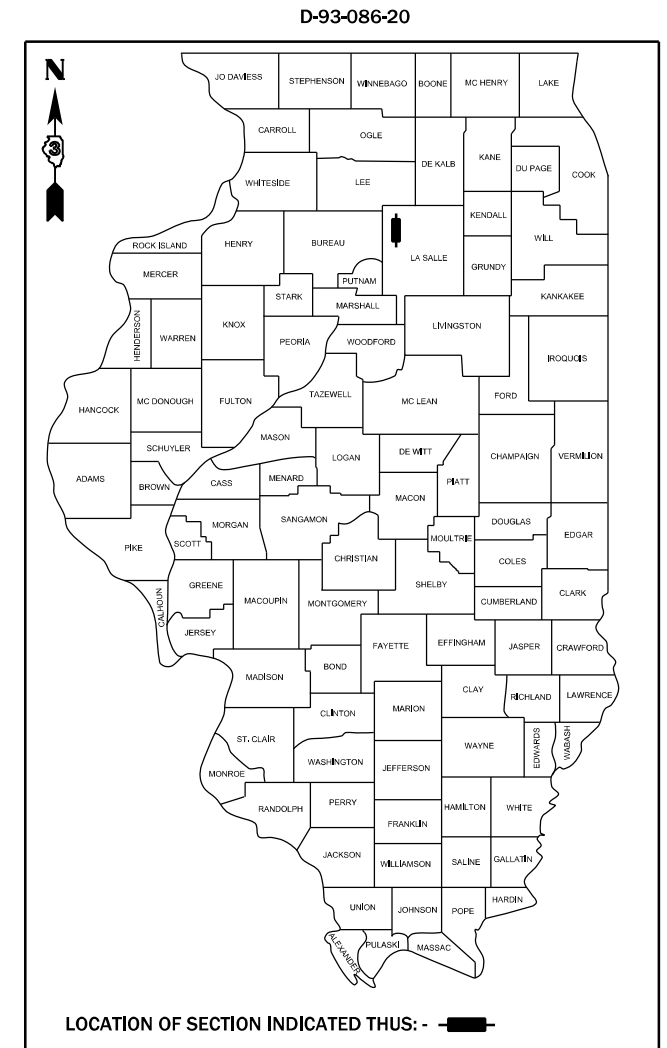
HIGHWAY STANDARDS

- 000001-08 STANDARD SYMBOLS, ABBREVIATIONS AND PATTERNS
- 001006 DECIMAL OF AN INCH AND OF A FOOT
- 701101-05 OFF-ROAD OPERATIONS, MULTILANE, 15' (4.5 m) TO 24" (600 mm) FROM PAVEMENT EDGE
- 701106-02 OFF-ROAD OPERATIONS, MULTILANE, MORE THAN 15' (4.5 m) AWAY
- 701400-10 APPROACH TO LANE CLOSURE, FREEWAY/EXPRESSWAY
- 701406-12 LANE CLOSURE, FREEWAY/EXPRESSWAY, DAY OPERATIONS ONLY
- 701456-05 PARTIAL EXIT RAMP CLOSURE FREEWAY/EXPRESSWAY
- 701901-08 TRAFFIC CONTROL DEVICES

**PROPOSED
HIGHWAY PLANS**

FAI ROUTE 39 (I-39)
SECTION (50-7, 8) SFY, CBL
PROJECT: HSIP - Q1G3 (467)
HIGH TENSION CABLE MEDIAN BARRIER
LASALLE COUNTY

C-93-121-20



I-39 - INTERSTATE
2019 ADT = 20,100
P.V. = 53.0% S.U. = 10.2% M.U. = 36.8%

STATE OF ILLINOIS
DEPARTMENT OF TRANSPORTATION

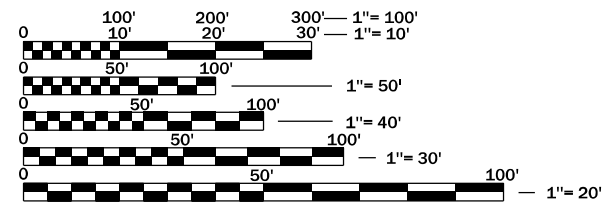
SUBMITTED February 05, 20 21

[Signature]
REGIONAL ENGINEER

March 19, 2021
[Signature]
ENGINEER OF DESIGN AND ENVIRONMENT

March 19, 2021
[Signature]
DIRECTOR OF HIGHWAYS PROJECT IMPLEMENTATION

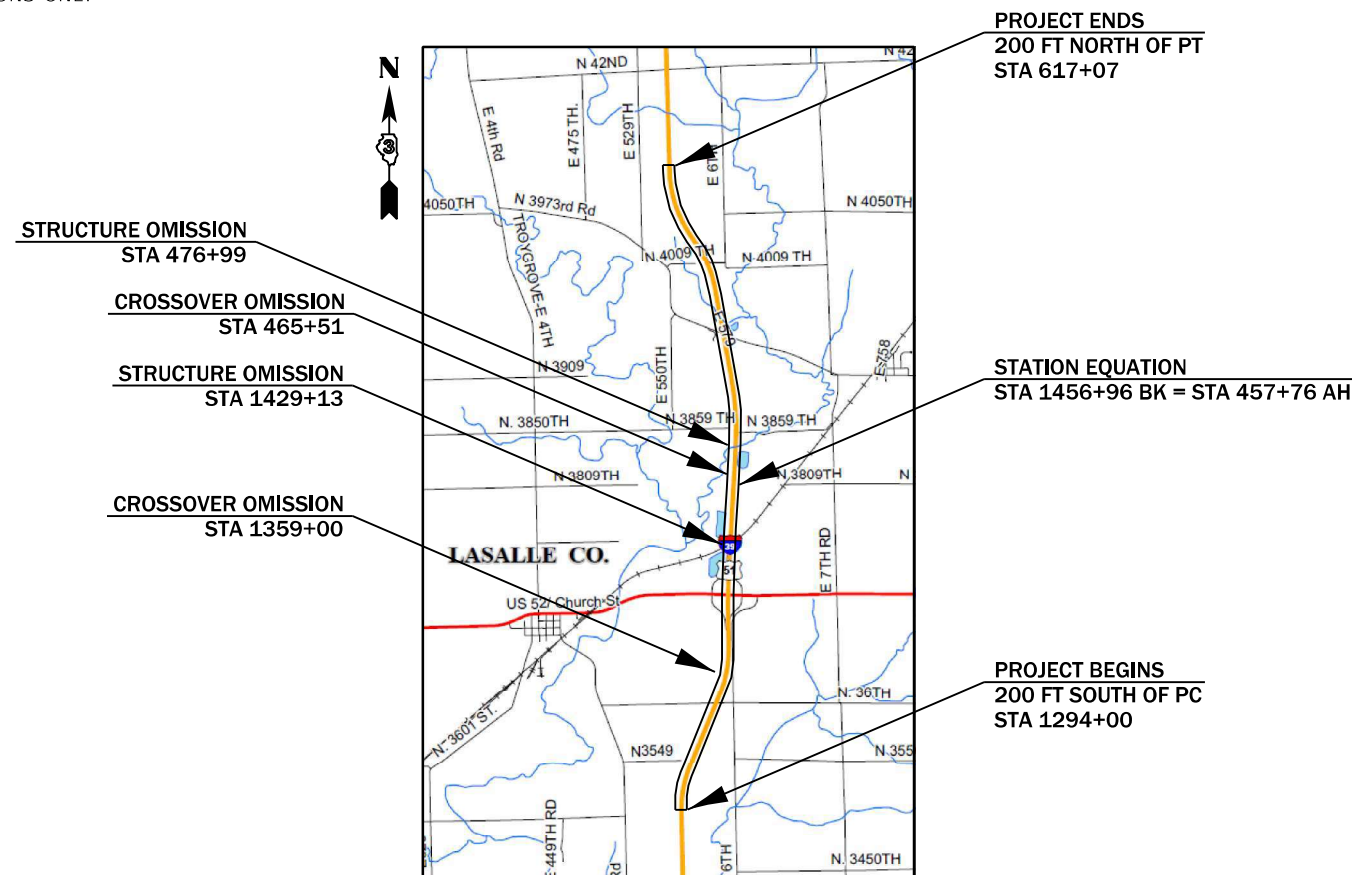
PRINTED BY THE AUTHORITY
OF THE STATE OF ILLINOIS



FULL SIZE PLANS HAVE BEEN PREPARED USING STANDARD ENGINEERING SCALES. REDUCED SIZED PLANS WILL NOT CONFORM TO STANDARD SCALES. IN MAKING MEASUREMENTS ON REDUCED PLANS, THE ABOVE SCALES MAY BE USED.

J.U.L.I.E.
JOINT UTILITY LOCATION INFORMATION FOR EXCAVATION
1-800-892-0123
OR 811

PROJECT ENGINEER: JOE KANNEL, P.E.
UNIT CHIEF: MARC BUDZYNSKI, P.E.
DISTRICT 3 NO. (815) 434-6131
CONTRACT NO. 66L33



GROSS LENGTH = 32,227 FT. = 6.10 MILES
NET LENGTH = 31,256 FT. = 5.92 MILES

MODEL: \\MODELM\MAHES
FILE: \\mahe\c:\pwworking\bdudzynskim\070361\02366133-sh-cover.dgn

USER NAME = budzynskim	DESIGNED -	REVISED -
	DRAWN -	REVISED -
PLOT SCALE = 100.0000 ' / in.	CHECKED -	REVISED -
PLOT DATE = 2/5/2021	DATE -	REVISED -

**STATE OF ILLINOIS
DEPARTMENT OF TRANSPORTATION**

SUMMARY OF QUANTITIES

SCALE: SHEET OF SHEETS STA. TO STA.

F.A.I. RTE.	SECTION	COUNTY	TOTAL SHEETS	SHEET NO.
39	(50-7, 8) 5FY, CBL	LASALLE	7	3
CONTRACT NO. 66L33			ILLINOIS FED. AID PROJECT	

CODE NO.	ITEM	UNIT	TOTAL QUANTITY	CONSTR. CODE
				90% FED 10% STATE
				SAFETY 0021 RURAL
64401100	HIGH TENSION CABLE MEDIAN BARRIER	FOOT	31256	31256
64401300	HIGH TENSION CABLE MEDIAN BARRIER TERMINALS	EACH	10	10
67100100	MOBILIZATION	L SUM	1	1
70100700	TRAFFIC CONTROL AND PROTECTION, STANDARD 701406	L SUM	1	1
70100825	TRAFFIC CONTROL AND PROTECTION, STANDARD 701456	L SUM	1	1
70107025	CHANGEABLE MESSAGE SIGN	CAL DA	28	28
* 72501100	TERMINAL MARKER - POST MOUNTED	EACH	10	10
* 78200021	HIGH TENSION CABLE MEDIAN BARRIER REFLECTORS	EACH	394	394
X0500002	HOT-MIX ASPHALT MOW STRIP	SQ YD	13892	13892

* SPECIALTY ITEM

HIGH TENSION CABLE MEDIAN BARRIER SCHEDULE									
LOCATION			SIDE	LENGTH	HT CBL MEDIAN BARRIER	HT CBL MED BAR REFLECTORS	HT CBL MED BAR TERM	TERMINAL MARKER-POST MOUNTED	HMA MOW STRIP
STA	TO	STA	NB/SB	FOOT	FOOT	EACH	EACH	EACH	SQ YD
1294+00	TO	1358+42	SB	6442	6442	81	2	2	2863
CROSSOVER OMISSION STA 1359+00									
1359+55	TO	1425+31	NB	6576	6576	83	2	2	2923
STRUCTURE OMISSION STA 1429+13									
1430+37	TO	1456+96	NB	2659	2659	34	1	1	1182
STATION EQUATION STA 1456+96 BK = STA 457+76 AH									
457+76	TO	464+92	NB	716	716	9	1	1	318
CROSSOVER OMISSION STA 465+51									
466+10	TO	475+80	SB	970	970	13	2	2	431
STRUCTURE OMISSION STA 476+99									
478+14	TO	617+07	NB	13893	13893	174	2	2	6175
TOTAL				31256	31256	394	10	10	13892

MODEL: \\MODEL\MARIES
 FILE: \\MARIES_CADD\work\sidejob\budzynskim\070361\0366L33-eh-cover.dgn

USER NAME = budzynskim	DESIGNED -	REVISED -
	DRAWN -	REVISED -
PLOT SCALE = 100.0000' / in.	CHECKED -	REVISED -
PLOT DATE = 2/5/2021	DATE -	REVISED -

**STATE OF ILLINOIS
DEPARTMENT OF TRANSPORTATION**

SCHEDULES

SCALE: SHEET OF SHEETS STA. TO STA.

F.A.I. RTE.	SECTION	COUNTY	TOTAL SHEETS	SHEET NO.
39	(50-7, 8) 5FY, CBL	LASALLE	7	5
CONTRACT NO. 66L33				
ILLINOIS FED. AID PROJECT				

I-39 AND US 52 INTERCHANGE



APPROX 41,675 CU FT OF EXCAVATION
TO BE PLACED IN THE SOUTHEAST
INTERCHANGE INFIELD.

MODEL: MODEL\MAR15
FILE: MAR15_01.dwg; work\aid\66L33-sh-cover.dwg

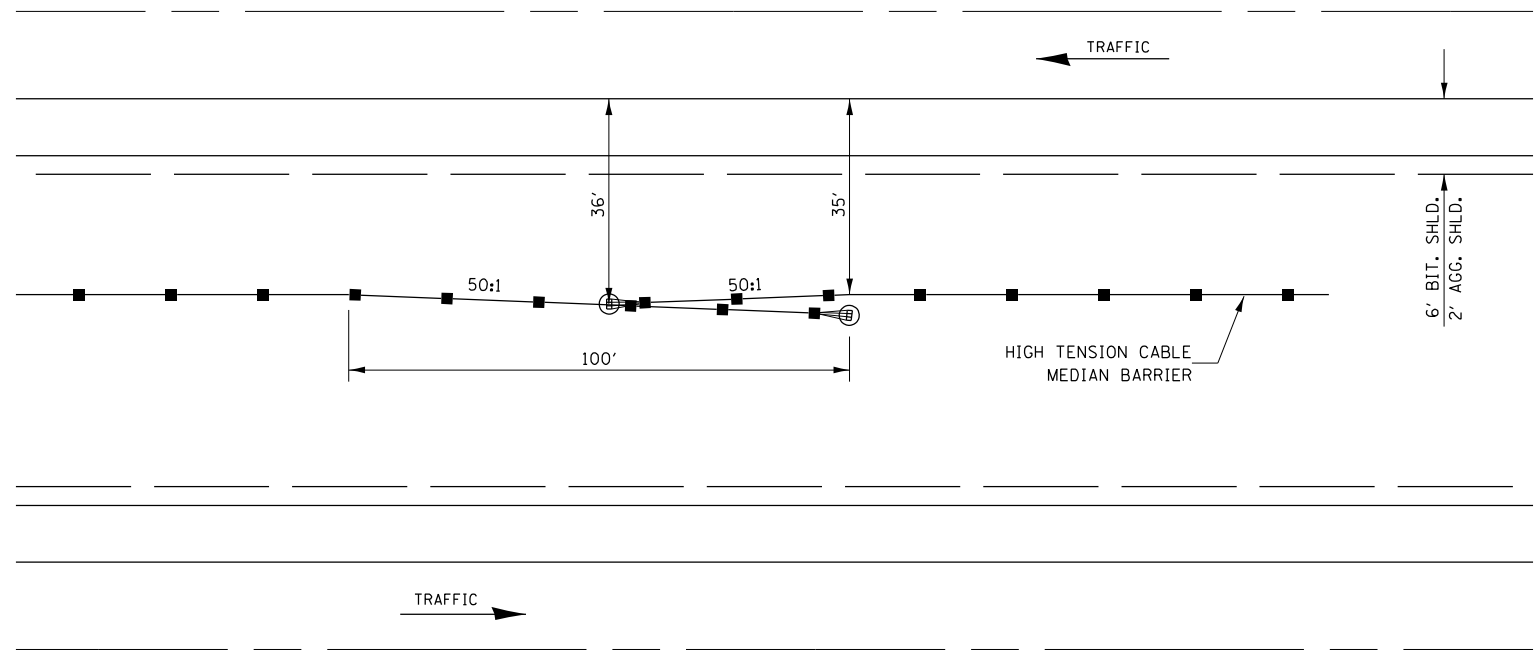
USER NAME = budzynskim	DESIGNED -	REVISED -
	DRAWN -	REVISED -
PLOT SCALE = 100,0000' / in.	CHECKED -	REVISED -
PLOT DATE = 2/5/2021	DATE -	REVISED -

**STATE OF ILLINOIS
DEPARTMENT OF TRANSPORTATION**

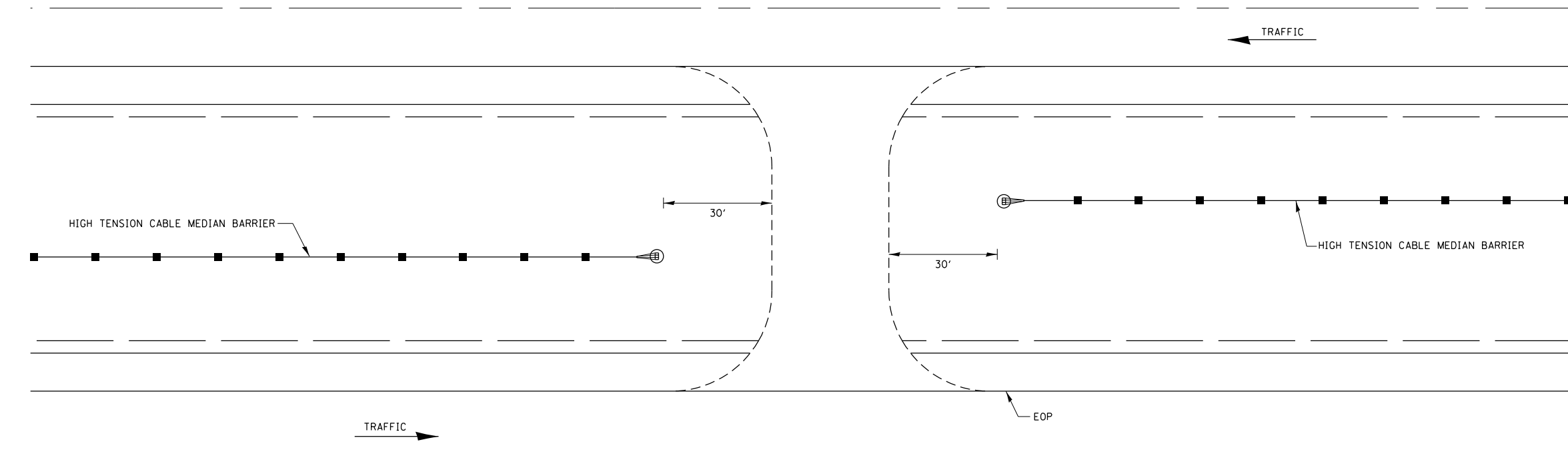
DETAILS

SCALE: SHEET OF SHEETS STA. TO STA.

F.A.I. RTE.	SECTION	COUNTY	TOTAL SHEETS	SHEET NO.
39	(50-7, 8) 5FY, CBL	LASALLE	7	6
CONTRACT NO. 66L33				
ILLINOIS FED. AID PROJECT				



HIGH TENSION CABLE BARRIER OVERLAP DETAIL



MAINTENANCE CROSSOVER DETAIL

MODEL: \\MODELMARIES
 FILE: \\maries_cbl\work\66l33\hld\66l33-shl-cover.dgn

USER NAME = budzynskim	DESIGNED -	REVISED -
	DRAWN -	REVISED -
PLOT SCALE = 100,0000' / in.	CHECKED -	REVISED -
PLOT DATE = 2/5/2021	DATE -	REVISED -

**STATE OF ILLINOIS
DEPARTMENT OF TRANSPORTATION**

DETAILS				
SCALE:	SHEET	OF	SHEETS	STA. TO STA.

F.A.I. RTE.	SECTION	COUNTY	TOTAL SHEETS	SHEET NO.
39	(50-7, 8) 5FY, CBL	LASALLE	7	7
CONTRACT NO. 66L33				
ILLINOIS FED. AID PROJECT				