

STATE OF ILLINOIS
DEPARTMENT OF TRANSPORTATION

F.A.I. RTE	SECTION	COUNTY	TOTAL SHEETS	SHEET NO
55	60-1HBR-BP-1	MADISON	11	1
		ILLINOIS	CONTRACT NO. 76P09	

FOR INDEX OF SHEETS, SEE SHEET NO. 2

FUNCTIONAL CLASSIFICATION

INTERSTATE

TRAFFIC DATA

I-55 (NORTH OF STRUCTURE)

2019 ADT = 33,200 (ACTUAL)
2021 ADT = 34,000 (ESTIMATED)
2041 ADT = 43,200 (ESTIMATED)
SU = 3.0%
MU = 12.4%

I-55 (SOUTH OF STRUCTURE)

2019 ADT = 33,800 (ACTUAL)
2021 ADT = 34,600 (ESTIMATED)
2041 ADT = 44,900 (ESTIMATED)
SU = 2.2%
MU = 20.1%

IL 143 (WEST OF STRUCTURE)

2019 ADT = 13,000 (ACTUAL)
2021 ADT = 13,300 (ESTIMATED)
2041 ADT = 16,900 (ESTIMATED)
SU = 2.9%
MU = 1.5%

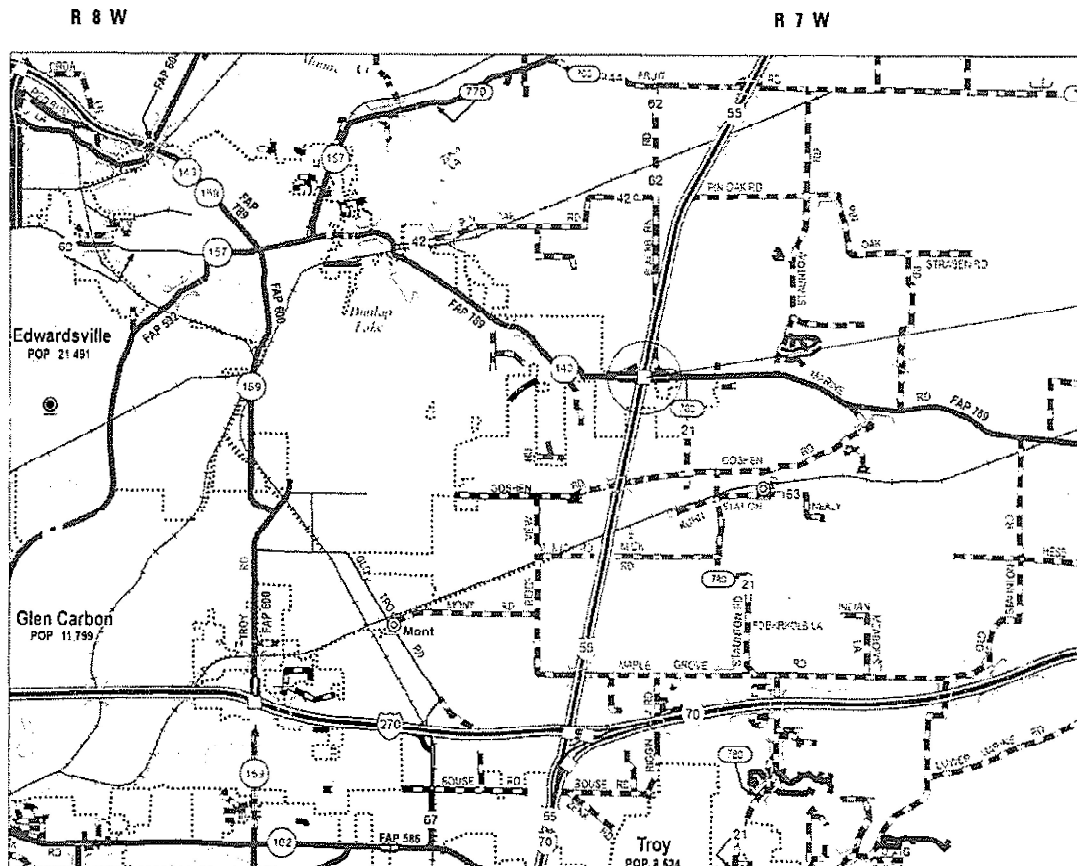
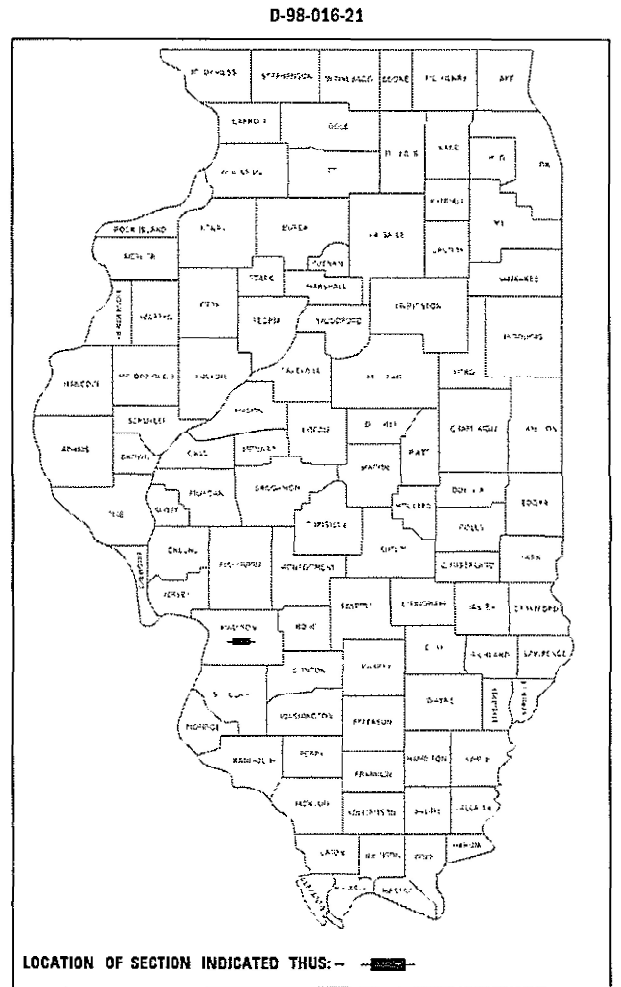
IL 143 (EAST OF STRUCTURE)

2019 ADT = 8,000 (ACTUAL)
2021 ADT = 8,200 (ESTIMATED)
2041 ADT = 10,400 (ESTIMATED)
SU = 4.1%
MU = 1.9%

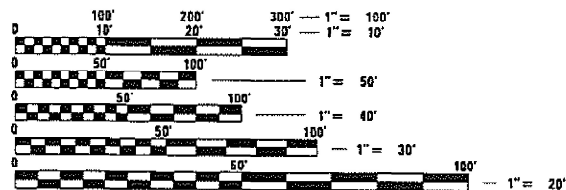
**PROPOSED
HIGHWAY PLANS**

FAI ROUTE 55 (I-55)
SECTION 60-1HBR-BP-1
NHPP-GAU8(252)
BRIDGE PAINTING
MADISON COUNTY

C-98-040-21



SN 060-0148
4 SPAN STRUCTURE
LATITUDE: 38.79575
LONGITUDE: 89.89546



FULL SIZE PLANS HAVE BEEN PREPARED USING STANDARD ENGINEERING SCALES. REDUCED SIZED PLANS WILL NOT CONFORM TO STANDARD SCALES. IN MAKING MEASUREMENTS ON REDUCED PLANS, THE ABOVE SCALES MAY BE USED.

J.U.L.I.E.
JOINT UTILITY LOCATION INFORMATION FOR EXCAVATORS
1-800-892-0123
OR 811

PROJECT ENGINEER: CHERYL KEPLAR (618) 346-3123
PROJECT MANAGER: ROBERT HARBAUGH (618) 346-3189

CONTRACT NO. 76P09

GROSS LENGTH = NET LENGTH = 194.33 FT. = 0.037 MILE

STATE OF ILLINOIS
DEPARTMENT OF TRANSPORTATION

SUBMITTED January 27, 20 21
Keith Roberts
REGIONAL ENGINEER

March 19, 2021
Scott A. Elk
ENGINEER OF DESIGN AND ENVIRONMENT

March 19, 2021
Jerry M. G...
DIRECTOR OF HIGHWAYS PROJECT IMPLEMENTATION

PRINTED BY THE AUTHORITY
OF THE STATE OF ILLINOIS

INDEX OF SHEETS

- 1 COVER SHEET
- 2 INDEX OF SHEETS, HIGHWAY STANDARDS, & GENERAL NOTES
- 3 SUMMARY OF QUANTITIES
- 4 STAGING SHEETS
- 5-11 STRUCTURE PLANS (FOR INFORMATION ONLY)

HGHWAY STANDARDS

- 001001-08 STANDARD SYMBOLS, ABBREVIATIONS AND PATTERNS
- 001006 DECIMAL OF AN INCH AND OF A FOOT
- 701101-05 OFF-ROAD OPERATIONS, MULTILANE, 15' TO 24" FROM PAVEMENT EDGE
- 701106-02 OFF-ROAD OPERATIONS, MULTILANE, MORE THAN 15' AWAY
- 701400-10 APPROACH TO LANE CLOSURE, FREEWAY/EXPRESSWAY
- 701401-12 LANE CLOSURE, FREEWAY/EXPRESSWAY
- 701411-09 LANE CLOSURE, MULTILANE, AT ENTRANCE OR EXIT RAMP, FOR SPEEDS ≥ 45 MPH
- 701428-01 TRAFFIC CONTROL, SETUP AND REMOVAL, FREEWAY/EXPRESSWAY
- 701901-08 TRAFFIC CONTROL DEVICES

GENERAL NOTES

1. UTILITIES KNOWN TO HAVE FACILITIES WITHIN THE PROJECT AREA ARE AS FOLLOWS:
 - * AT&T ILLINOIS (COMMUNICATIONS) JULIE MEMBER
160 WEST DIVISION STREET
MARYVILLE, IL 62062
 - * CHARTER COMMUNICATIONS (CABLETV) JULIE MEMBER
210 WEST DIVISION STREET
MARYVILLE, IL 62062
 - * CITY OF EDWARDSVILLE (WATER & SANITARY SEWER) JULIE MEMBER
118 HILLSBORO AVENUE
P.O. BOX 407
EDWARDSVILLE, IL 62025
2. NO SURVEY WAS PERFORMED FOR THIS PROJECT AND THE PLANS WERE CREATED USING MICROFILM AND FIELD MEASUREMENTS.
3. THE RESIDENT ENGINEER SHALL VERIFY THE EXISTENCE OF HIGHWAY LIGHTING AND/OR INTELLIGENT TRANSPORTATION SYSTEMS (I.T.S.) UTILITIES WITHIN THE PROJECT LIMITS. IF HIGHWAY LIGHTING AND/OR I.T.S. EXISTS WITHIN THE PROJECT LIMITS, AND IF THESE ITEMS REQUIRE LOCATING, THE CONTRACTOR SHALL BE DIRECTED TO DO SO ACCORDING TO SECTION 803 OF THE STANDARD SPECIFICATIONS. THIS WORK SHALL BE PAID FOR ACCORDING TO ARTICLE 109.04 OF THE STANDARD SPECIFICATIONS.
4. TWO CHANGEABLE MESSAGE BOARD SHALL BE REQUIRED FOR THIS PROJECT. THEY SHALL BE PLACED 2 WEEKS PRIOR TO ANY LANE CLOSURE. LOCATION TO BE DETERMINED BY THE RESIDENT ENGINEER.
5. THE DEPARTMENT STRONGLY ENCOURAGES THE PRIME CONTRACTOR AND THEIR APPROVED SUB-CONTRACTORS TO HIRE MINORITY, WOMEN AND DISADVANTAGED INDIVIDUALS FROM ITS FEDERALLY FUNDED HIGHWAY CONSTRUCTION CAREERS TRAINING PROGRAM (HCCTP) TO HELP MEET WORKFORCE AND TRAINEE GOALS. THIS PROGRAM IS TRAINING MINORITIES, WOMEN AND DISADVANTAGED INDIVIDUALS IN HIGHWAY CONSTRUCTION-RELATED SKILLS, E.G., MATH FOR THE TRADES, JOB READINESS, TECHNICAL SKILLS COURSEWORK (CARPENTRY, CONCRETE FLATWORK, BLUEPRINT READING, SITE PLANS, SITE WORK, TOOLS USE, ETC.) AND OSHA 10 HOUR CERTIFICATION, TO PREPARE THEM FOR A CAREER IN THE HIGHWAY CONSTRUCTION TRADES. GRADUATES ARE WELL-TRAINED AND READY TO BECOME PRODUCTIVE ENTRY-LEVEL CONSTRUCTION WORKERS. CONTACT THE DISTRICT 8 EEO OFFICE AT 618-346-3360 AND/OR THE HCCTP COORDINATOR AT 618-874-6528 TO LEARN MORE ABOUT THE PROGRAM AND FOR ASSISTANCE IN MEETING WORKFORCE AND TRAINEE GOALS.
6. ALL DISTURBED EMBANKMENT AREAS SHALL BE SEEDED WITH CLASS 2A SEED, FERTILIZED AND MULCHED AS PER SECTION 250.04 OF THE STANDARD SPECIFICATIONS AND AS DIRECTED BY THE ENGINEER. THE COST FOR PERFORMING THIS WORK SHALL BE CONSIDERED INCLUDED IN THE UNIT PRICE BID FOR THE ITEM OF WORK INITIATING THE DISTURBANCE.
7. NO MATERIAL SHALL BE LEFT ON OR NEAR THE ROADWAY DURING NON-WORKING HOURS.
8. ANY NECESSARY TRAFFIC CONTROL WILL BE PROVIDED BY THE CONTRACTOR; APPROPRIATE STANDARDS ARE LISTED IN THE PLANS AND CONTRACT DOCUMENTS.
9. SSPC QP1 AND QP2 CONTRACTOR CERTIFICATION IS REQUIRED FOR THIS CONTRACT.
10. CLEANING AND PAINTING OF THE EXISTING STEEL SHALL BE AS SPECIFIED IN THE SPECIAL PROVISION FOR "CLEANING AND PAINTING EXISTING STEEL STRUCTURES". ALL BEAMS, BEARINGS, AND OTHER STRUCTURAL STEEL SHALL BE CLEANED PER NEAR WHITE BLAST CLEANING -SSPC-SP10.
11. THE AREAS CLEANED PER NEAR WHITE BLAST CLEANING SHALL BE PAINTED ACCORDING TO THE REQUIREMENTS OF SYSTEM OZ/E/U. THE COLOR OF THE FINAL FINISH COAT FOR ALL STEEL SURFACES SHALL BE GRAY (MUNSELL NO 5B 7/1).
12. A MINIMUM OF 2 AIR MONITORS WILL BE REQUIRED TO MONITOR ABRASIVE BLASTING OPERATIONS AT THIS SITE. SEE SPECIAL PROVISION FOR "CONTAINMENT AND DISPOSAL OF LEAD PAINT CLEANING RESIDUES".
13. EXISITNG LEAD PAINT DEBRIS ON GROUND UNDERNEATH THE STRUCTURE WITHIN 20 FT OF THE OUTER LIMITS OF SN 060-0148 SHALL BE COLLECTED AND DISPOSED OF IN ACCORDANCE WITH THE SPECIAL PROVISION FOR "CONTAINMENT AND DISPOSAL OF LEAD PAINT CLEANING RESIDUES". THIS WORK SHALL BE INCLUDED IN THE PAY ITEM CONTAINMENT AND DISPOSAL OF LEAD PAINT CLEANING RESIDUES #1.

COMMITMENTS

NONE

MODEL: \\MODELM\HMF5
 FILE: \\MODELM\p01\highwaystandards\illinois\spc\PHWDOT\Documents\DOT_Offices\District_8\Projects\DE76P09\CADD\data\CAD\kkes08076P09-ht-rematc.dgn

	USER NAME = harbaughhd	DESIGNED -	REVISED -	STATE OF ILLINOIS DEPARTMENT OF TRANSPORTATION	INDEX OF SHEETS, HIGHWAY STANDARDS, & GENERAL NOTES			F.A.I. RTE.	SECTION	COUNTY	TOTAL SHEETS	SHEET NO.
		DRAWN -	REVISED -				60-1HBR-BP-1	MADISON	11	2		
	PLOT SCALE = 100,0000 ' / in.	CHECKED -	REVISED -			CONTRACT NO. 76P09						
	PLOT DATE = 3/17/2021	DATE -	REVISED -			SCALE: NA	SHEET 1	OF 1	SHEETS	STA.	TO STA.	ILLINOIS

URBAN

CONSTR. CODE
90% FED 10% STATE

CODE NO.	ITEM	UNIT	TOTAL QUANTITY	BRIDGE
				0047 SN 060-0148
67000400	ENGINEER'S FIELD OFFICE, TYPE A	CAL MO	3	3
67100100	MOBILIZATION	L SUM	1	1
70100420	TRAFFIC CONTROL AND PROTECTION, STANDARD 701411	EACH	2	2
70106800	CHANGEABLE MESSAGE SIGN	CAL MO	1	1
70200100	NIGHTTIME WORK ZONE LIGHTING	L SUM	1	1
X7010805	TRAFFIC CONTROL AND PROTECTION, STANDARD 701401 (SPECIAL)	L SUM	1	1
X9700021	MOBILE BARRIER TRAILER	L SUM	1	1
Z0007101	CONTAINMENT AND DISPOSAL OF LEAD PAINT CLEANING RESIDUES NO. 1	L SUM	1	1
Z0010501	CLEANING AND PAINTING STEEL BRIDGE NO. 1	L SUM	1	1

MODEL: Default
 FILE NAME: p:\uplanroom.dct\illinois\p09\WIDDOT\Doc\menst\B0T_Offices\Dist\ct_8\Project\0676P09\CAD\data\CA0\sheet\0676P09-ph-500.dgn

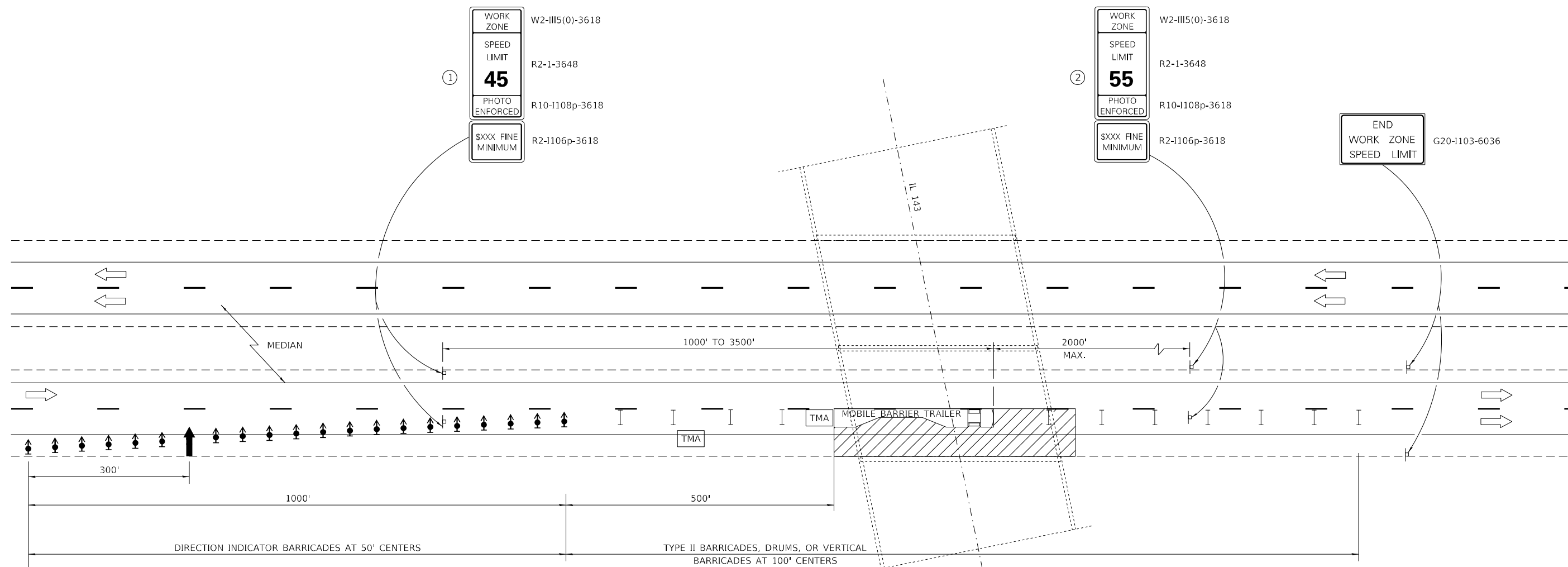
USER NAME = harbaughnd	DESIGNED -	REVISED -
PLOT SCALE = 100.0000' / in.	DRAWN -	REVISED -
PLOT DATE = 1/26/2021	CHECKED -	REVISED -
	DATE -	REVISED -

**STATE OF ILLINOIS
DEPARTMENT OF TRANSPORTATION**

SUMMARY OF QUANTITIES

SCALE: NA SHEET 1 OF 1 SHEETS STA. TO STA.

F.A.I. RTE.	SECTION	COUNTY	TOTAL SHEETS	SHEET NO.
55	60-1HBR-BP-1	MADISON	11	3
			CONTRACT NO. 76P09	
			ILLINOIS FED. AID PROJECT	



GENERAL NOTES

THIS DETAIL IS USED WHERE AT ANY TIME ANY VEHICLE, EQUIPMENT, WORKERS OR THEIR ACTIVITIES WILL ENCRANCH ON THE LANE ADJACENT TO THE SHOULDER, OR ON THE SHOULDER WITHIN 2' OF THE EDGE OF PAVEMENT.

THIS DETAIL MUST BE USED IN COMBINATION WITH STANDARD 701400.

THIS DETAIL ALSO APPLIES WHEN WORK IS BEING PERFORMED IN THE LEFT LANE. UNDER THESE CONDITIONS, THE SETUP WOULD BE A MIRROR IMAGE TO WHAT IS SHOWN.

A CHECK BARRICADE SHALL BE PLACED IN THE MIDDLE OF THE CLOSED LANE AND AT THE SHOULDER AT 1000' CENTERS.

ALL DIMENSIONS ARE IN INCHES UNLESS OTHERWISE SHOWN.

SYMBOLS

- ARROW BOARD
- WORK AREA
- TRUCK/TRAILER MOUNTED ATTENUATOR
- SIGN
- DIRECTION INDICATOR BARRICADE WITH STEADY BURN MONODIRECTIONAL LIGHT
- TYPE II BARRICADE, DRUM, OR VERTICAL BARRICADE
- MOBILE BARRIER TRAILER

① WORK ZONE SPEED LIMIT SIGNS SHALL BE MOVED AS NECESSARY TO MAINTAIN THE REQUIRED SPACING BETWEEN THE SIGNS AND THE WORKERS IN EACH SEPARATE WORK ACTIVITY. WORK ZONE SPEED LIMIT 55 PHOTO ENFORCED SIGN SHALL BE OMITTED WHEN THE WORK AREA DICTATES PLACEMENT OF THE SIGN ARRAY WITHIN 500' OF THE END WORK ZONE SPEED LIMIT SIGN.

SEE STANDARD 701400 FOR APPROACH START OF LANE CLOSURE TAPER

LANE CLOSURE, FREEWAY / EXPRESSWAY DETAIL

MODEL: Default FILE NAME: p:\pub\mroom.dwg ILLINOIS.GOV PWIDOT\Documents\DOT Office\District 8\Projects\0876P09\CADD\DATA\CAD\FRCS\223-76P09-PT-02.dwg

USER NAME = harbaughrd	DESIGNED -	REVISED -
	DRAWN -	REVISED -
PLOT SCALE = 100:0.0000 " = 1" / in.	CHECKED -	REVISED -
PLOT DATE = 1/26/2021	DATE -	REVISED -

**STATE OF ILLINOIS
DEPARTMENT OF TRANSPORTATION**

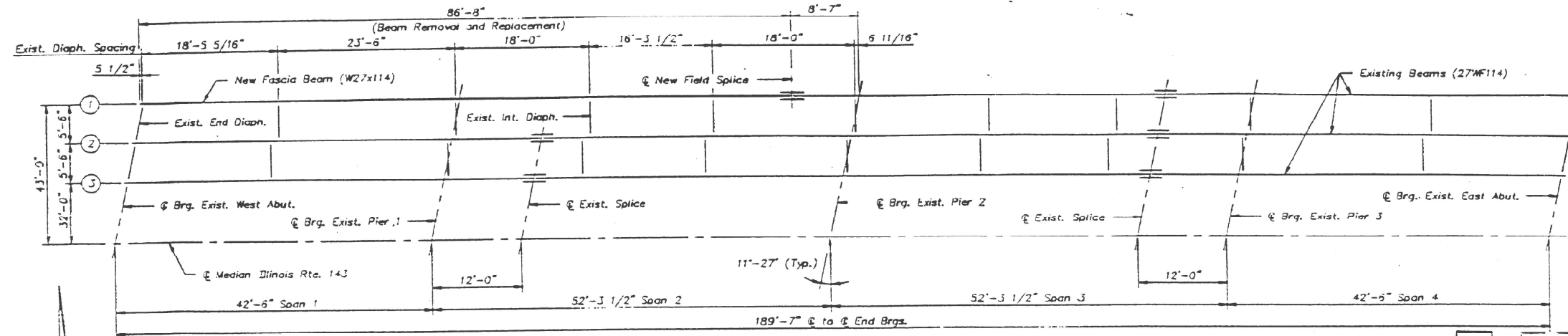
**TRAFFIC CONTROL AND PROTECTION
STANDARD 701401 (SPECIAL)**

SCALE: NA SHEET 1.1 OF 1 SHEETS STA. TO STA.

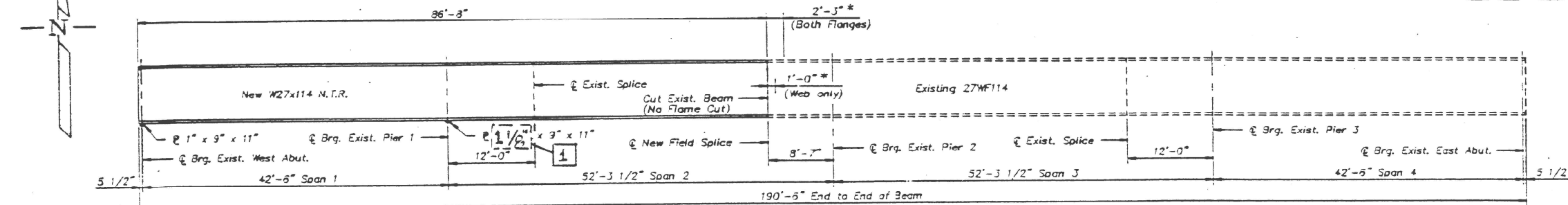
F.A.I. RTE.	SECTION	COUNTY	TOTAL SHEETS	SHEET NO.
55	60-1HBR-BP-1	MADISON	11	4
CONTRACT NO. 76P09				
ILLINOIS FED. AID PROJECT				

STATE OF ILLINOIS
DEPARTMENT OF TRANSPORTATION

PROJECT NO.	SECTION	COUNTY	TOTAL SHEETS	SHEET NO.
F.A.I. 55	60-1HBR	MADISON	37	20
FED. AID PROJ. NO.	ILLINOIS	FED. AID PROJECT		27 SHEETS

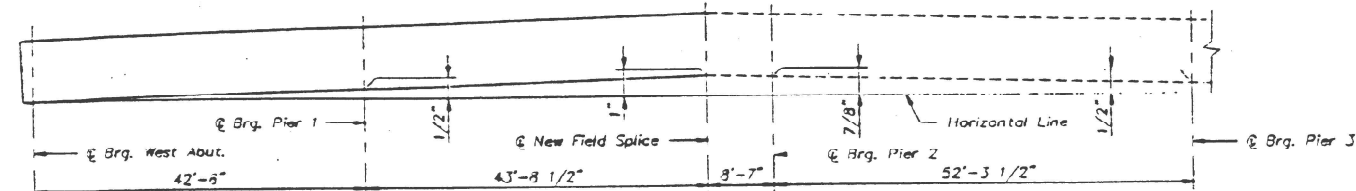


PARTIAL STRUCTURAL STEEL FRAMING PLAN

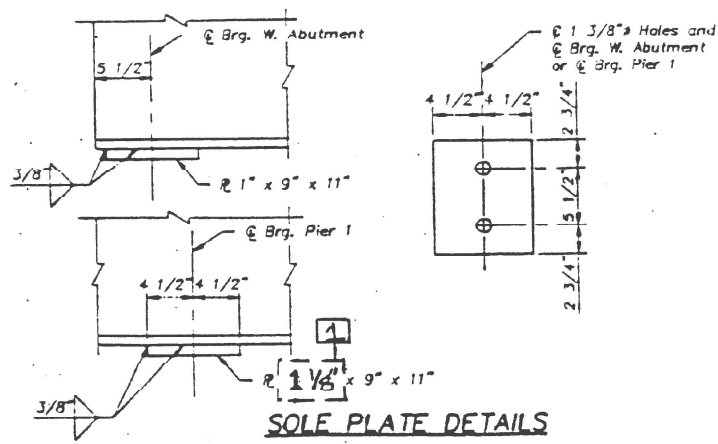


BEAM NO. 1 ELEVATION

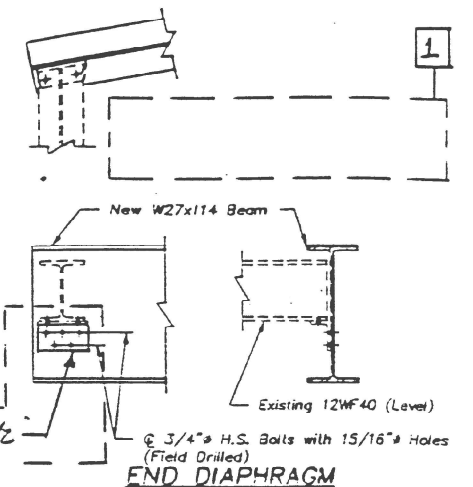
clean, by Method 3, the end of existing Beam No. 1 the distance indicated, all faces. See Special Provision "Cleaning & Painting Existing Steel Structure."



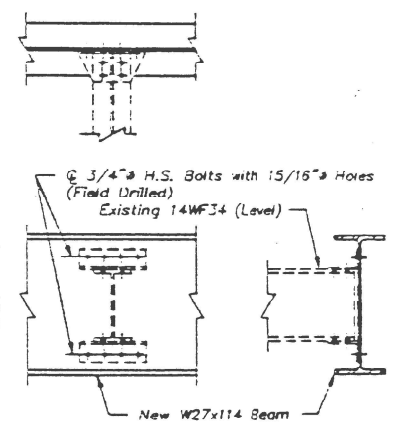
VERTICAL BLOCKING DIAGRAM



SOLE PLATE DETAILS

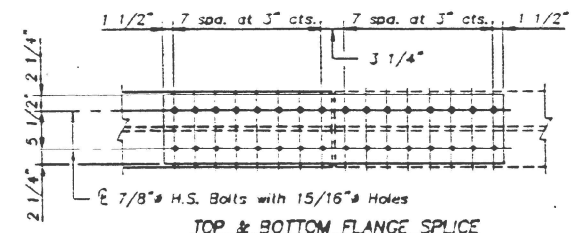


END DIAPHRAGM

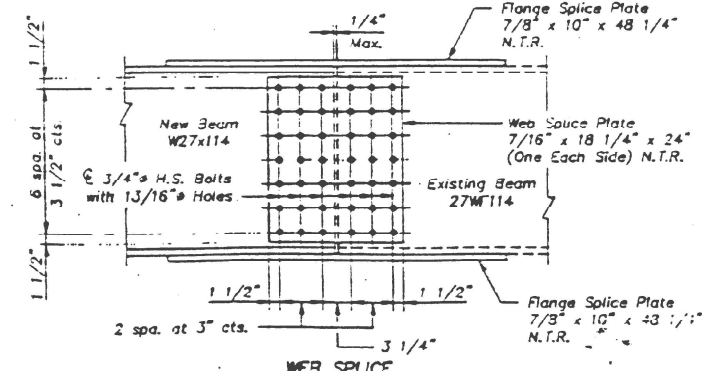


INTERMEDIATE DIAPHRAGM

Note: Existing connecting angles for intermediate diaphragms shall be reused.



TOP & BOTTOM FLANGE SPLICE



NEW FIELD SPLICE AT BEAM NO. 1

NOTES:
All new structural steel shall conform to AASHTO designation M270 Grade 35.
Cost of field drilling of holes in existing structural steel shall be incidental to "Furnishing and Erecting Structural Steel". Holes for splice bolts shall be reamed.
Cutting of existing beam shall conform to the Standard Specifications with approval of the Engineer.
N.T.R. - Notch Toughness Requirements Zone 2 are required for new portion of beam no. 1 and all splice material.

ILLINOIS ROUTE 143 OVER F.A.I. 55
SECTION 60-1HBR-4
MADISON COUNTY
STA. 168+08.23
STRUCTURE NO. 060-0148

STRUCTURAL STEEL REPAIRS

1 Revised 1-9-01 D.F.

DESIGNED	P.R.C./S.O.O.	<p>Kuhmann Design Group #1 GINGER CREEK MEADOWS EDWARDSVILLE, ILLINOIS 62025 (618) 692-0808</p>
CHECKED	K.P.C./S.O.O.	
DRAWN	P.R.C.	
CHECKED	K.P.C./R.A.S.	
07-30-93		

USER NAME = harbaughhd	DESIGNED -	REVISED -
PLOT SCALE = 100,0000' / in.	DRAWN -	REVISED -
PLOT DATE = 1/26/2021	CHECKED -	REVISED -
	DATE -	REVISED -

STATE OF ILLINOIS
DEPARTMENT OF TRANSPORTATION

STRUCTURE PLANS
FOR INFORMATION ONLY

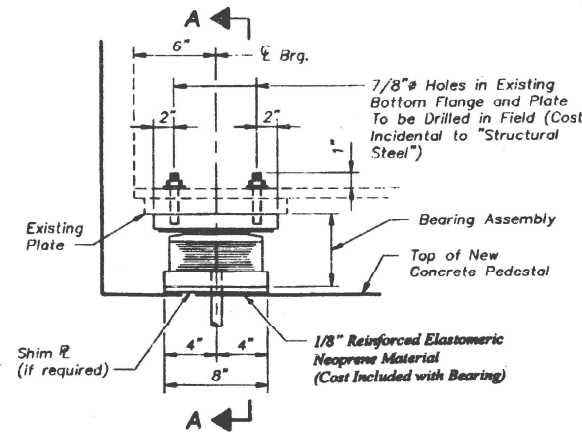
SCALE: NA SHEET 2 OF 7 SHEETS STA. TO STA.

F.A.I. RTE.	SECTION	COUNTY	TOTAL SHEETS	SHEET NO.
55	60-1HBR-BP-1	MADISON	11	6
CONTRACT NO. 76P09				
ILLINOIS FED. AID PROJECT				

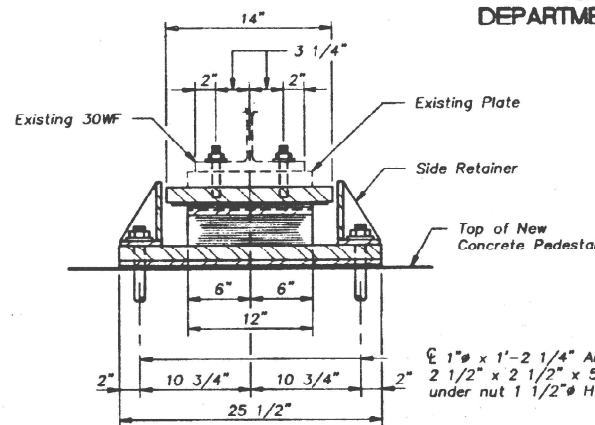
STATE OF ILLINOIS
DEPARTMENT OF TRANSPORTATION

ROUTE NO.	SECTION	COUNTY	SHEET NO.	SHEET NO.
F.A.I. 55	60-IHBR-4	MADISON	37	24
FED. ROAD DIST. NO.	ILLINOIS	FED. AID PROJECT		

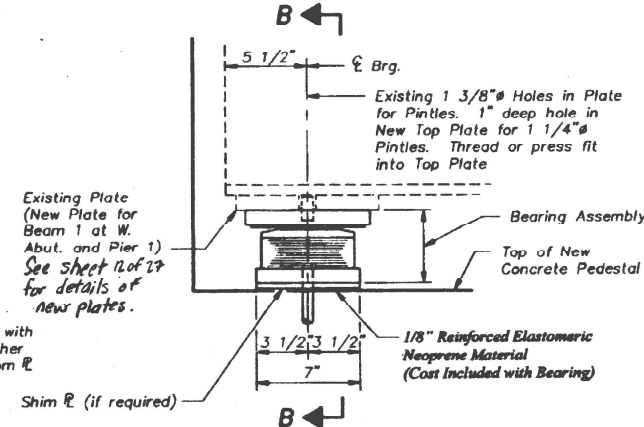
SHEET NO. 16
27 SHEETS



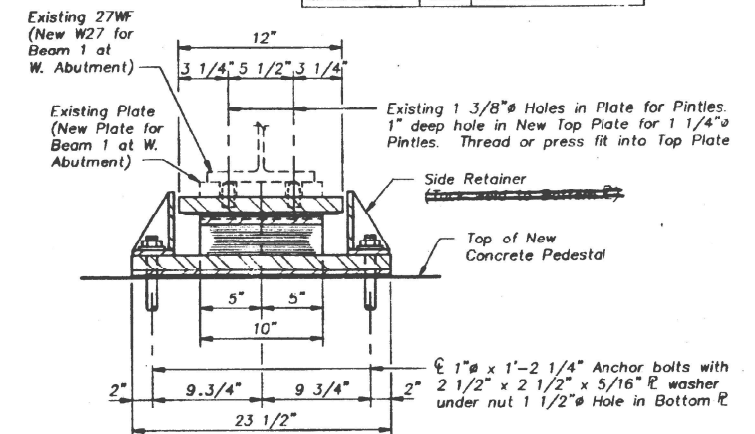
ELEVATION AT ABUTMENT



SECTION A-A



ELEVATION AT ABUTMENT

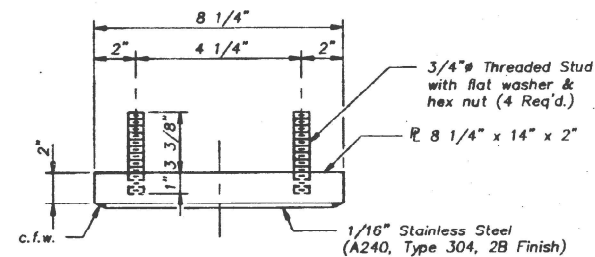


SECTION B-B

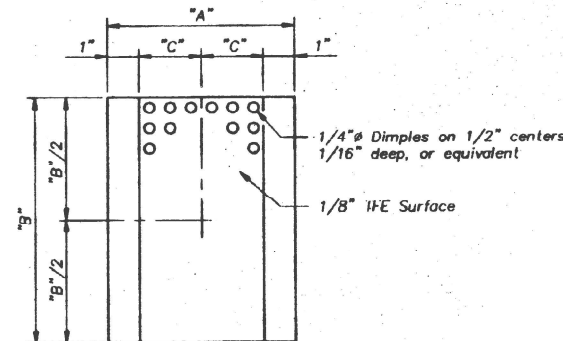
**TYPE II ELASTOMERIC EXPANSION BEARING
AT BEAMS 4 THRU 13**

Note: See Sheet 25 for Anchor Bolt installation.

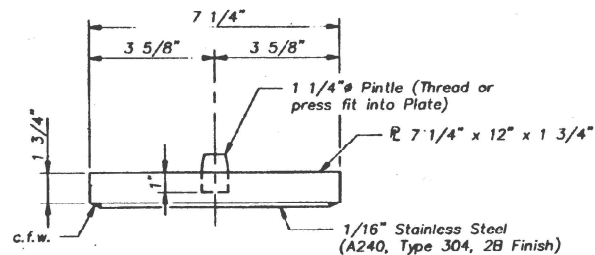
**TYPE II ELASTOMERIC EXPANSION BEARING
AT BEAMS 1 THRU 3 AND 14 THRU 16**



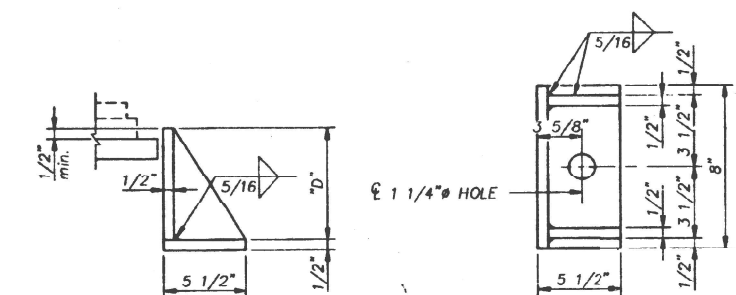
TOP BEARING ASSEMBLY
AT BEAMS 4 THRU 13



PLAN - TFE ELASTOMERIC BEARING

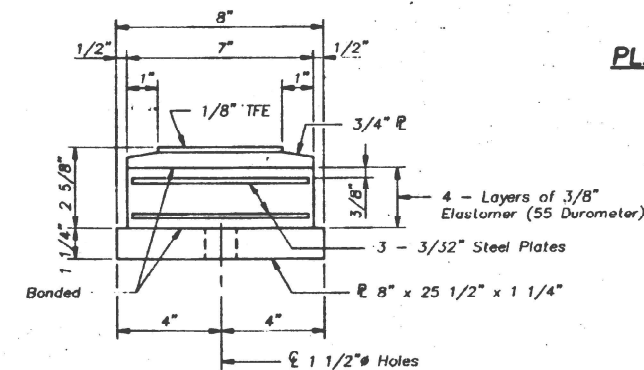


TOP BEARING ASSEMBLY
AT BEAMS 1 THRU 3 AND 14 THRU 16

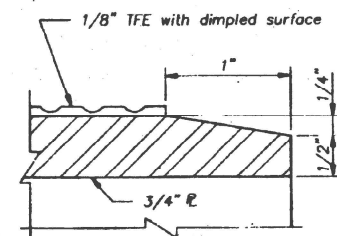


SIDE RETAINER

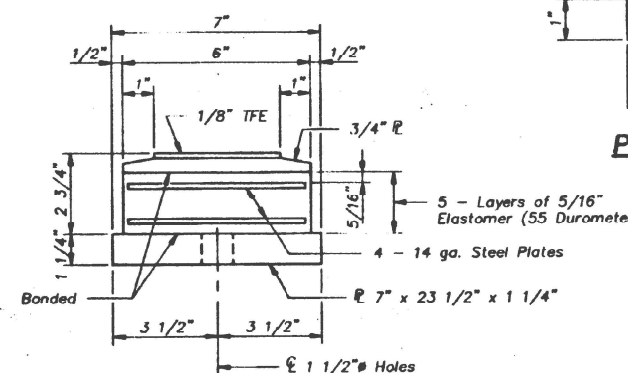
Equivalent rolled angle with stiffeners will be allowed in lieu of welded plates.



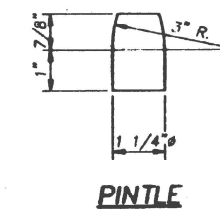
BOTTOM BEARING ASSEMBLY
AT BEAMS 4 THRU 13



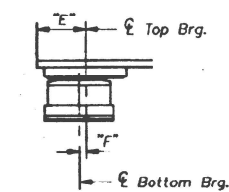
SECTION THRU TFE



BOTTOM BEARING ASSEMBLY
AT BEAMS 1 THRU 3 AND 14 THRU 16

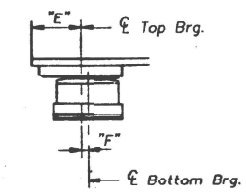


PINTE



BELOW 50° F.

(Move bottom brg. away from fixed brg.)



ABOVE 50° F.

(Move bottom brg. toward fixed brg.)

Note: The 1/8" TFE sheet shall be bonded directly to the top steel plate with a two-component, medium viscosity epoxy resin, conforming to the requirements of the Federal Specifications MMM-A-134, Type I. The bond agent shall be applied on the full area of the contact surfaces.

Bonding of 1/8" TFE sheet during vulcanizing process will be permitted provided the process and method of adjusting assembly height is approved by the Engineer.

SETTING ANCHOR BOLTS AT EXPANSION BEARING

"F" = 1/8" per each 100' of expansion for every 15' temperature change from the normal temperature of 50° F.

ELASTOMERIC BEARING ASSEMBLY TABLE

Location	"A"	"B"	"C"	"D"	"E"
Beams 1-3 & 14-16	6"	10"	2"	4 5/8"	5 1/2"
Beams 4-13	7"	12"	2 1/2"	4 3/4"	6"

BILL OF MATERIAL

Item	Unit	Total
Elastomeric Bearing Assembly Type II	Each	32

ILLINOIS ROUTE 143 OVER F.A.I. 55
F.A.I. - 55 SECTION 60-IHBR-4
MADISON COUNTY
STA. 168+08.23
STRUCTURE NO. 060-0148

**ELASTOMERIC BEARING DETAILS
AT ABUTMENTS**

DESIGNED	P.R.C.
CHECKED	S.O.O./R.A.S.
DRAWN	P.R.C.
CHECKED	K.P.C./R.A.S.

Kuhmann Design Group
#1 GINGER CREEK MEADOWS
EDWARDSVILLE, ILLINOIS 62025
(618) 692-0808

07-30-93

USER NAME = harbaughhd	DESIGNED -	REVISED -
	DRAWN -	REVISED -
PLOT SCALE = 100,0000' / in.	CHECKED -	REVISED -
PLOT DATE = 1/26/2021	DATE -	REVISED -

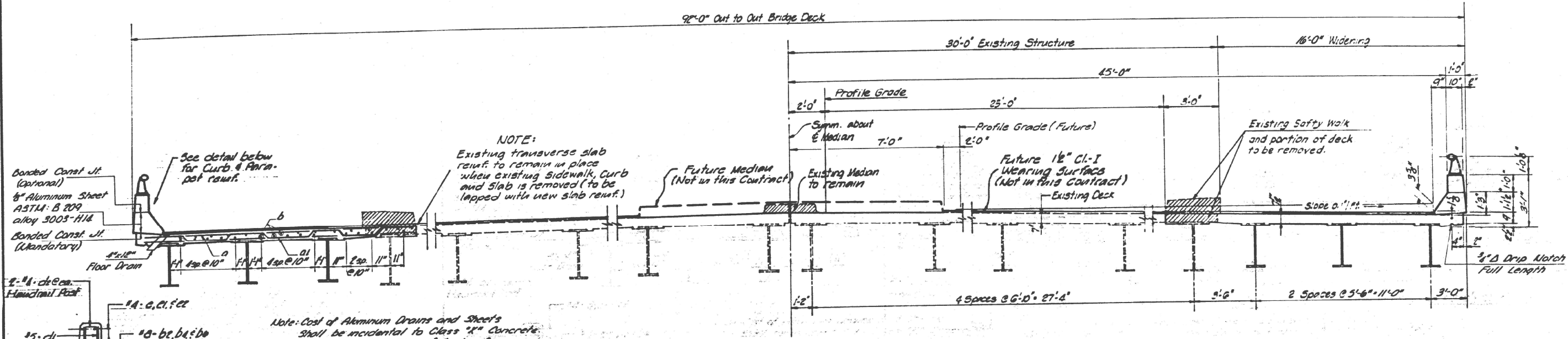
STATE OF ILLINOIS
DEPARTMENT OF TRANSPORTATION

STRUCTURE PLANS
FOR INFORMATION ONLY

SCALE: NA SHEET 3 OF 7 SHEETS STA. TO STA.

F.A.I. RTE.	SECTION	COUNTY	TOTAL SHEETS	SHEET NO.
55	60-IHBR-4	MADISON	11	7
			CONTRACT NO. 76P09	
		ILLINOIS	FED. AID PROJECT	

ROUTE NO.	SECTION	COUNTY	TOTAL SHEETS	SHEET NO.
FAI-55	60-1 Hwy 4	MADISON	37	16
FED. ROAD DIST. NO.		ILLINOIS	PROJECT	

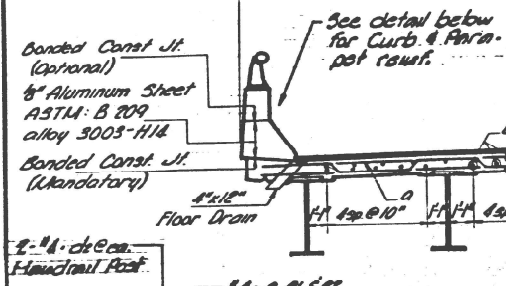


NOTE:
Existing transverse slab reinf. to remain in place when existing sidewalk, curb and slab is removed (to be lapped with new slab reinf.)

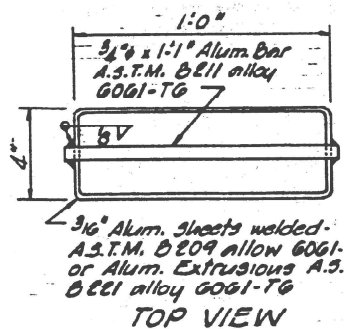
Note: Cost of Aluminum Drains and Sheets shall be incidental to Class "K" Concrete. All edges shall have 1/4" chamfer.

CROSS SECTION
Scale - 3/8" = 1'-0"

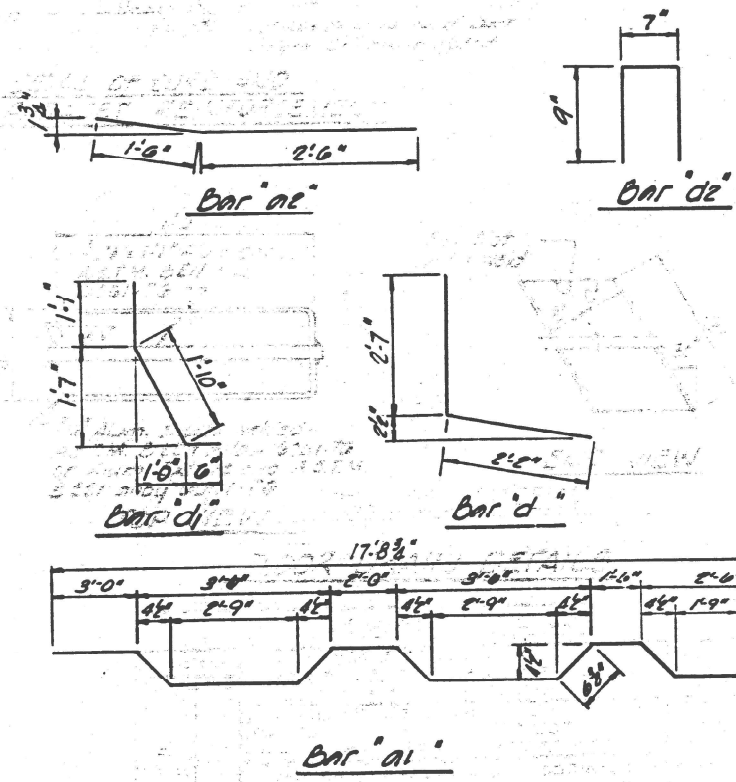
NOTE: Horizontal construction joints between top of bridge floor and the curb shall be constructed in accordance with article 506.13 (b) (1, 2 or 3) of the Standard Specifications.



DETAIL OF CURB AND PARAPET REINFORCEMENT



FLOOR DRAIN DETAILS



REVISIONS		CROSS SECTION & DETAILS	
NO.	DATE	STATE OF ILLINOIS DEPT. OF PUBLIC WORKS AND BUILDINGS DIVISION OF HIGHWAYS	
1		ILL. RT. 43 OVER FAI. 55 FAI. 55 SEC. 60-1 (Hwy 4) PROJECT STA. 1117+32.52 (FAI. 55) MADISON CO.	
2		HOMER L. CHASTAIN & ASSOCIATES CONSULTING ENGINEERS DECATUR, ILLINOIS	
3		DESIGNED BY DATE DR. B. P. 09	CHECKED BY DATE FNL 0-09
4		PROJECT NO. 2020-1	
5		SHEET NO.	

USER NAME = harbaughhd	DESIGNED -	REVISED -
PLOT SCALE = 100,0000' / in.	DRAWN -	REVISED -
PLOT DATE = 1/26/2021	CHECKED -	REVISED -
	DATE -	REVISED -

STATE OF ILLINOIS
DEPARTMENT OF TRANSPORTATION

STRUCTURE PLANS
FOR INFORMATION ONLY

SCALE: NA SHEET 6 OF 7 SHEETS STA. TO STA.

F.A.I. RTE.	SECTION	COUNTY	TOTAL SHEETS	SHEET NO.
55	60-1HBR-BP-1	MADISON	11	10
ILLINOIS			FED. AID PROJECT	

CONTRACT NO. 76P09

ROUTE NO.	SECTION	COUNTY	TOTAL SHEETS	SHEET NO.
FD-1-55	60-1-4	MADISON	37	18
FED. ROAD DIST. NO.	ILL. JOB NO.	PROJECT		

Sheet NR 9
of 14 Sheets

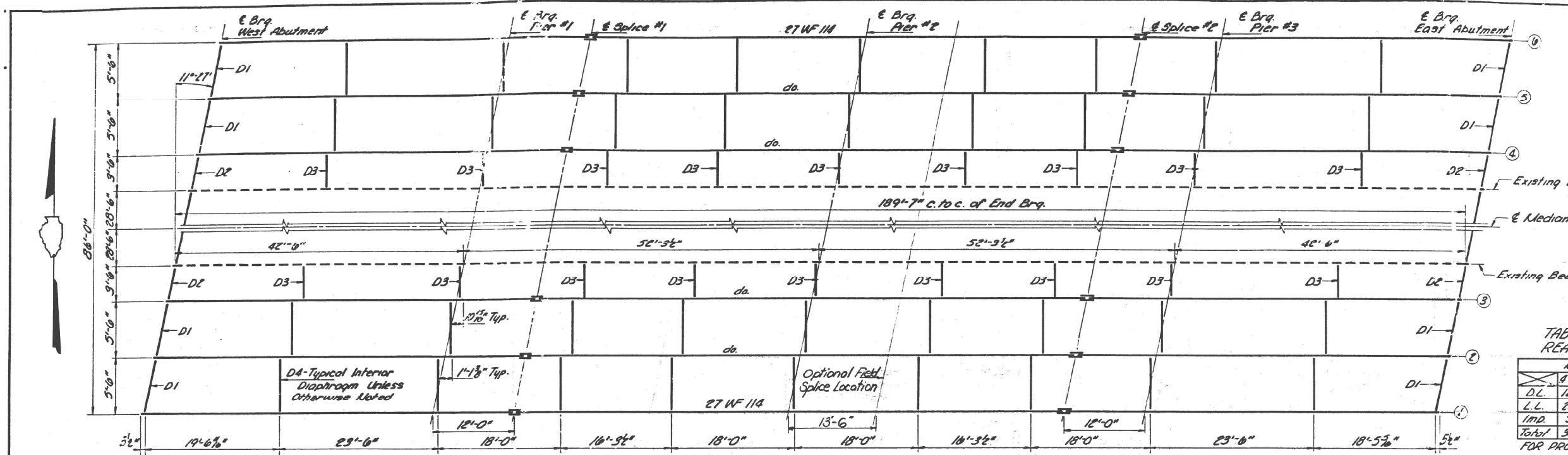


TABLE OF MOMENTS AND REACTIONS - INTERIOR BEAMS

LOADS	MOMENTS			REACTIONS		
	4 Sp. Pier 1	5 Sp. Pier 2	Abut. Pier 2	Abut. Pier 1	Pier 1	Pier 2
D.L.	120	250	113	243	15.5	52.2
L.L.	202	168	206	178	27.1	32.1
IMP.	59	49	60	52	7.9	9.5
Total	381	467	379	473	50.5	93.8

FOR PROPOSED NEW BEAMS

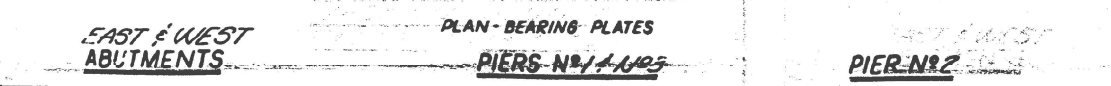
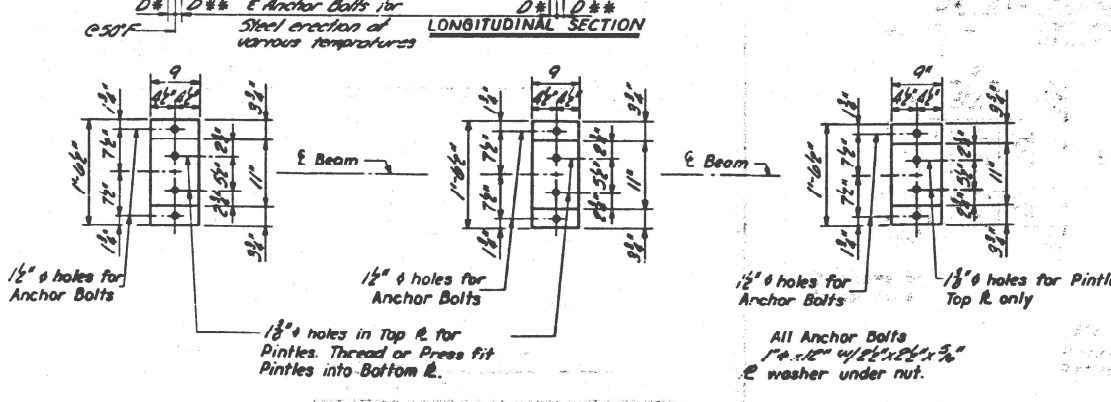
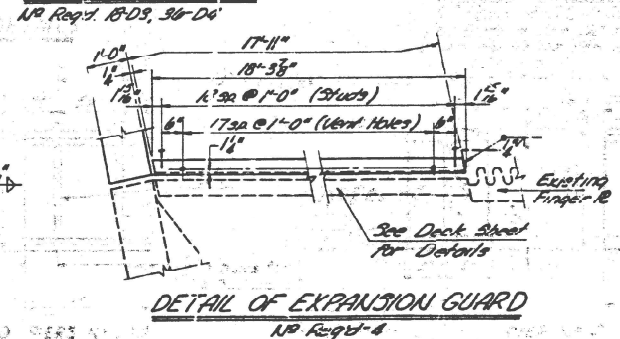
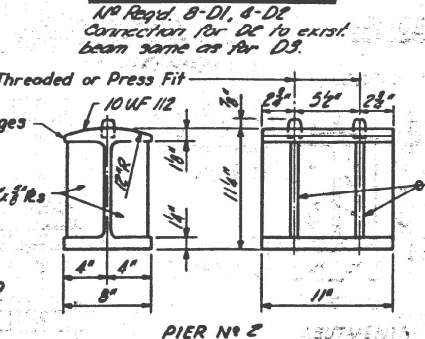
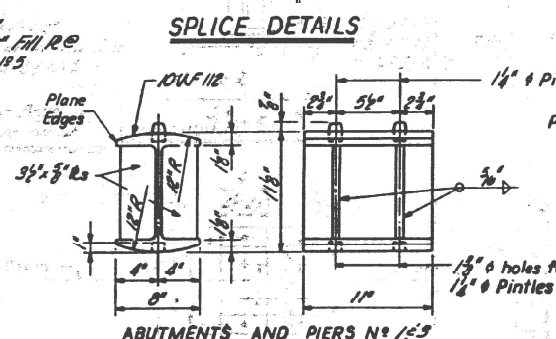
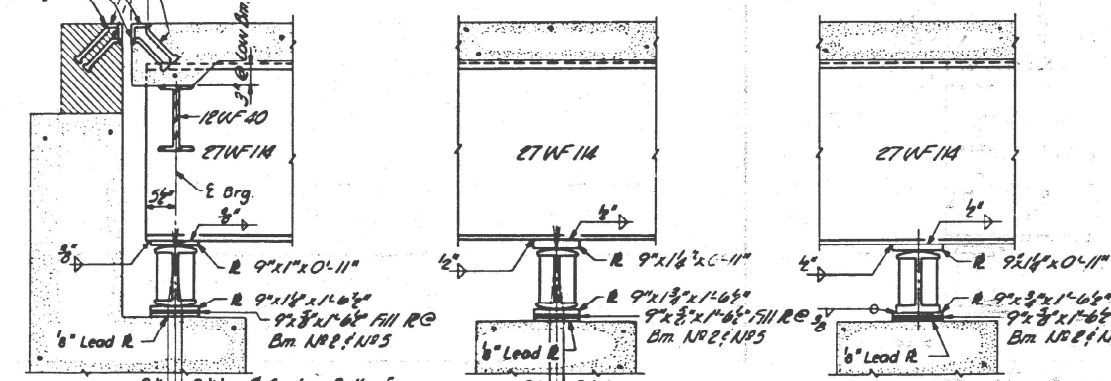
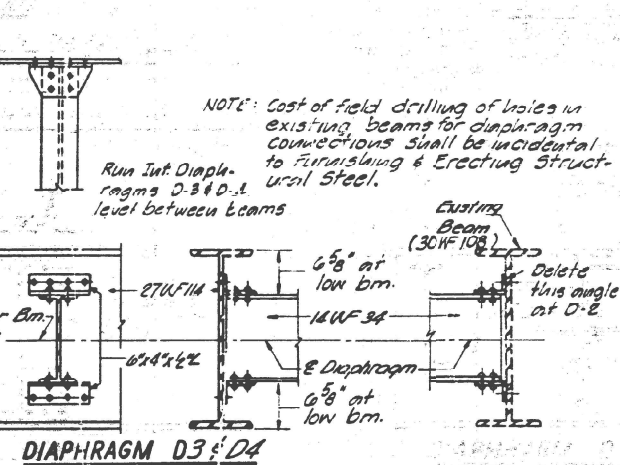
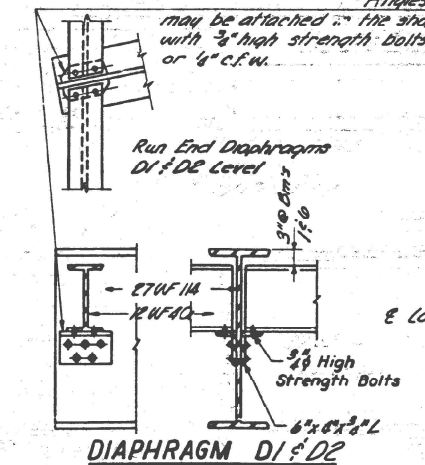
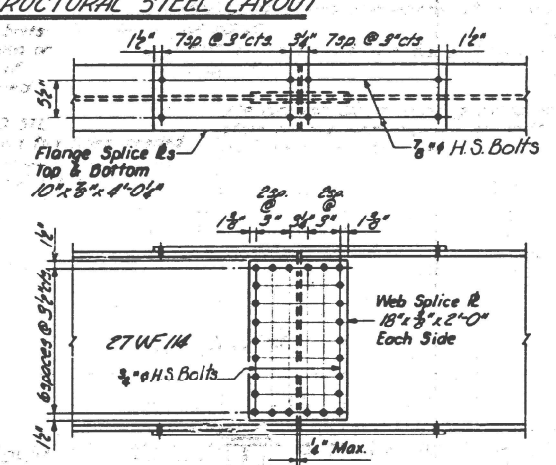
PLAN-STRUCTURAL STEEL LAYOUT

7/8" holes at 12" cts. for 3/8" Bolts.
All bolts shall be burned, sawed or clipped off flush with back of angles after forms are removed.

3/8" x 8" CR1020 STL Granular or solid flux filled, headed studs - automatically end welded (alternate at 1'-0" cts.)

D* = 5"/100 Ft. of exp. for every 15° below normal temp. of 50°F.
D** = 9"/100 Ft. of exp. for every 15° above normal temp. of 50°F.

1" Anchor Bolts to be grouted into drilled holes after beams are in place, or bolts at fixed pier may be built into masonry.



TOP OF BEAM ELEVATIONS

LOCATION	Abut. 1	Pier 1	Sp. 1	Pier 2	Sp. 2	Pier 3	Abut. 2
Beam #1	573.86	573.95	573.91	573.99	574.01	573.99	573.93
Beam #2	573.91	574.00	574.02	574.04	574.06	574.04	573.98
Beam #3	573.90	574.05	574.07	574.09	574.11	574.09	574.03
Beam #4	574.03	574.09	574.11	574.09	574.07	574.05	573.96
Beam #5	573.98	574.04	574.06	574.04	574.02	574.00	573.91
Beam #6	573.93	573.99	574.01	573.99	573.97	573.95	573.86

STRUCTURAL FRAMING

REVISIONS	DATE	DETAIL
1		
2		
3		
4		
5		
6		
7		
8		
9		
10		

STATE OF ILLINOIS
DEPT. OF PUBLIC WORKS AND BUILDINGS
DIVISION OF HIGHWAYS

ILL. RT. NO. 60-1-4
F.A.I. 55- SEC. 60-1-4-1-4 PROJECT
STA. 177+32.52 (F.A.I. 55) MADISON CO.

HOMER L. CHASTAIN & ASSOCIATES
CONSULTING ENGINEERS
DECATUR, ILLINOIS

DATE: 6-20-69
DESIGNED BY: J.M.C.
CHECKED BY: J.M.C.
PROJECT NO.: 2020-1
SHEET NO.:

USER NAME = harbaughhd	DESIGNED -	REVISED -
PLOT SCALE = 100,000' / in.	DRAWN -	REVISED -
PLOT DATE = 1/26/2021	CHECKED -	REVISED -
	DATE -	REVISED -

STATE OF ILLINOIS
DEPARTMENT OF TRANSPORTATION

STRUCTURE PLANS
FOR INFORMATION ONLY

SCALE: NA SHEET 7 OF 7 SHEETS STA. TO STA.

F.A.I. RTE.	SECTION	COUNTY	TOTAL SHEETS	SHEET NO.
55	60-1-4-1-4	MADISON	11	11
				CONTRACT NO. 76P09
				ILLINOIS FED. AID PROJECT