

STATE OF ILLINOIS

DEPARTMENT OF TRANSPORTATION  
DIVISION OF HIGHWAYS

MERCER COUNTY  
HIGHWAY PLANS

FAS ROUTE 212 (CH 9(JOY RD))  
SECTION 19-00117-02-PV  
PROJECT ZZ2U(798)  
FULL-DEPTH RECLAMATION  
MERCER COUNTY

| F.A.S. RTE. | SECTION        | COUNTY   | TOTAL SHEETS       | SHEET NO. |
|-------------|----------------|----------|--------------------|-----------|
| 212         | 19-00117-02-PV | MERCER   | 9                  | 1         |
|             |                | ILLINOIS | CONTRACT NO. 89783 |           |

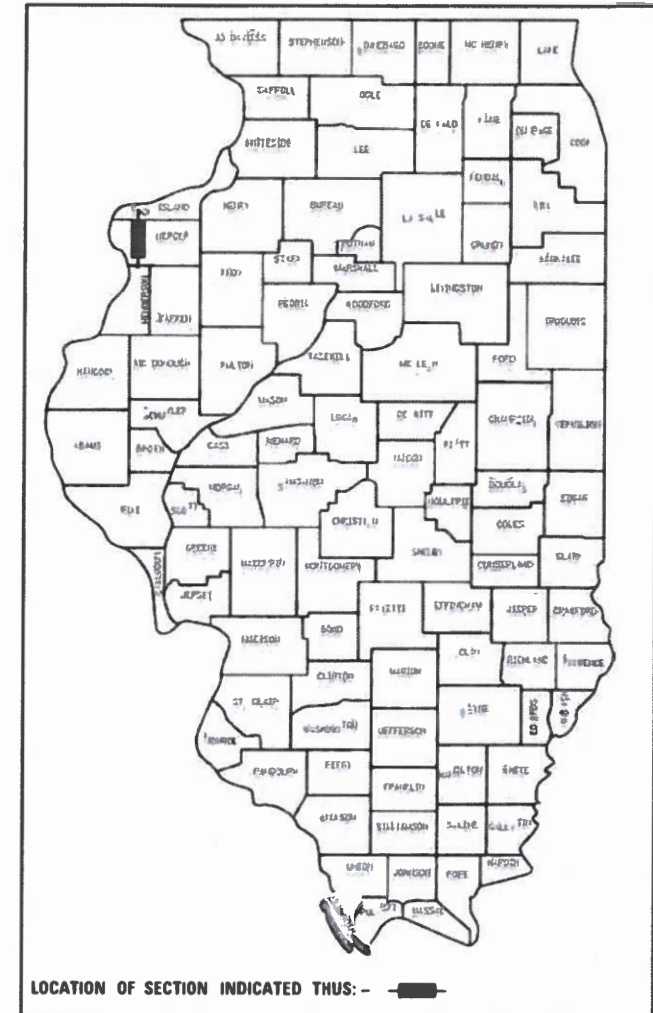
INDEX OF SHEETS

- 1 COVER SHEET
- 2 GENERAL NOTES & SUMMARY OF QUANTITIES
- 3 TYPICAL SECTION
- 4 SUPERELEVATION TABLE
- 5 OVERALL PLAN
- 6-7 HORIZONTAL ALIGNMENT
- 8 TRAFFIC CONTROL PLAN
- 9 CONCRETE BRIDGE RAILING

LIST OF HIGHWAY STANDARDS

- 631031-17 TRAFFIC BARRIER TERMINAL, TYPE 6
- 630301-09 SHOULDER WIDENING FOR TYPE 1 (SPECIAL) GUARDRAIL TERMINALS
- 701201-05 LANE CLOSURE, 2L, 2W, DAY ONLY, FOR SPEEDS > 45 MPH
- 701306-04 LANE CLOSURE, 2L, 2W, SLOW MOVING OPERATIONS DAY ONLY, FOR SPEEDS > 45 MPH
- 701901-08 TRAFFIC CONTROL DEVICES
- 780001-05 TYPICAL PAVEMENT MARKINGS
- B.L.R. 21-9 TYPICAL APPLICATION OF TRAFFIC CONTROL DEVICES FOR CONSTRUCTION ON RURAL LOCAL HIGHWAYS
- B.L.R. 22-7 TYPICAL APPLICATION OF TRAFFIC CONTROL DEVICES FOR CONSTRUCTION ON RURAL LOCAL HIGHWAYS (TWO-LANE TWO-WAY RURAL TRAFFIC) (ROAD CLOSED TO THRU TRAFFIC)

C-94-050-20



FUNCTIONAL CLASSIFICATION  
RURAL MAJOR COLLECTOR  
2015 ADT = 250  
DESIGN SPEED = 40 MPH  
PV = 88% SU = 7% MU = 5%

APPROVED June 1 20 21 LOCAL AGENCY OFFICIAL

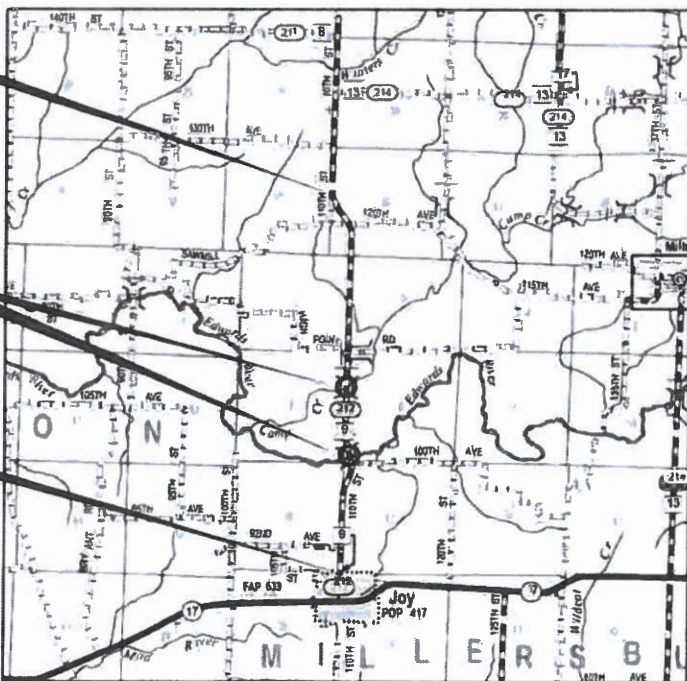
PASSED 6-2-21 DISTRICT FOUR ENGINEER OF LOCAL ROADS & STREETS

Releasing For Bid Based on Limited Review February 4 20 21 REGION THREE ENGINEER  
STATE OF ILLINOIS  
DEPARTMENT OF TRANSPORTATION

END IMPROVEMENT  
COUNTY HIGHWAY 9  
STA. 706 + 50

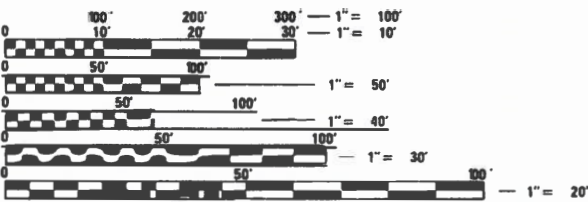
BRIDGE  
OMISSIONS

BEGIN IMPROVEMENT  
COUNTY HIGHWAY 9  
STA. 513 + 45



T 15 N  
N  
LOCATION MAP  
NOT TO SCALE

GROSS LENGTH = 19,305.00 FT. = 3.656 MILES  
NET LENGTH = 18,929.00 FT. = 3.585 MILES



FULL SIZE PLANS HAVE BEEN PREPARED USING STANDARD ENGINEERING SCALES. REDUCED SIZED PLANS WILL NOT CONFORM TO STANDARD SCALES. IN MAKING MEASUREMENTS ON REDUCED PLANS, THE ABOVE SCALES MAY BE USED.

J.U.L.I.E.  
JOINT UTILITY LOCATION INFORMATION FOR EXCAVATION  
1-800-892-0123  
OR 811

PROJECT MANAGER: SHANE LARSON, P.E.  
PROJECT ENGINEER: RYAN BRADLE, P.E.  
CATALOG 036022-00D  
CONTRACT NO. 89783

Hutchison Engineering, Inc.  
Jacksonville - Peoria  
Quad Cities - Shorewood  
Since 1945  
E-PIRES: 11 30 21  
W. S. L.  
SIGNATURE  
ENGINEER'S SEAL

PRINTED BY THE AUTHORITY  
OF THE STATE OF ILLINOIS

**GENERAL NOTES**

ALL REFERENCES TO THE "DEPARTMENT" OR "ENGINEER" IN THE IDOT STANDARD SPECIFICATIONS SHALL ALSO INCLUDE THE MERCER COUNTY ENGINEER.

THE SURFACE PROFILE MILLING QUANTITY AND LOCATIONS WILL BE AT THE DISCRETION OF THE ENGINEER.

**PROPERTY OWNER ACCESS REQUIREMENT**

ACCESS MUST BE MAINTAINED TO ALL EXISTING PROPERTIES DURING CONSTRUCTION PER ARTICLE 107.09 UNLESS ARRANGEMENTS ARE MADE IN WRITING BY THE CONTRACTOR WITH THE PROPERTY OWNERS WITH A COPY TO THE ENGINEER FOR SHORT-TERM CLOSURES.

**ENVIRONMENTAL REVIEWS**

PRIOR TO THE USE OF ANY PROPOSED BORROW AREAS, USE AREAS (TEMPORARY ACCESS ROADS, DETOURS, RUN-AROUNDS, ETC.) AND/OR WASTE AREAS, THE CONTRACTOR SHALL FILE THE REQUIRED ENVIRONMENTAL RESOURCE REQUEST SURVEYS ACCORDING TO SECTION 107.22 OF THE STANDARD SPECIFICATIONS. THESE SURVEYS ARE REQUIRED IN ORDER FOR THE DEPARTMENT TO CONDUCT CULTURAL AND BIOLOGICAL RESOURCE SURVEYS FOR THE PROPOSED SITE.

THE REQUIRED ENVIRONMENTAL RESOURCE DOCUMENTATION SHALL INCLUDE THE FOLLOWING:

- BDE FORM 2289 (CULTURAL AND NATURAL RESOURCES REVIEW OF BORROW AREAS)
- BDE FORM 2290 (WASTE/USE AREA REVIEW)
- A LOCATION MAP SHOWING THE SIZE LIMITS AND LOCATION OF THE USE AREA
- COLOR PHOTOGRAPHS DEPICTING THE USE AREA
- BORROW AREA ENTRY AGREEMENT FORM - D4 P10101

PRIOR TO ANY WASTE MATERIALS BEING REMOVED FROM THE CONSTRUCTION SITE THE REQUIRED ENVIRONMENTAL RESOURCE SURVEYS SHALL BE OBTAINED AND FILED BY THE CONTRACTOR. EXCESS WASTE PRODUCTS REMOVED FROM THE CONSTRUCTION SITE SHALL BE DISPOSED OF AS REQUIRED IN SECTION 202.03 OF THE STANDARD SPECIFICATIONS.

ANY PROTRUDING METAL BARS SHALL BE REMOVED PRIOR TO THE DISPOSAL OF BROKEN CONCRETE AT APPROVED DISPOSAL SITES.

PLEASE NOTE THAT A MINIMUM OF FOUR WEEKS SHALL BE ALLOWED FOR THE DISTRICT TO OBTAIN THE REQUIRED ENVIRONMENTAL CLEARANCES AND SIX WEEKS FOR THE REQUIRED BORROW SITE ENVIRONMENTAL CLEARANCES.

**PAINT PAVEMENT MARKING - LINE 5"**

| STATION   | TO | STATION | 5"   |  | 5"   |                             |      |       |
|-----------|----|---------|--|--|--|-----------------------------|------|-------|
|           |    |         | SKIP-DASH<br>YELLOW<br>PASSING / NO PASSING<br>CENTERLINE (NORTHBOUND) | SOLID<br>YELLOW<br>PASSING / NO PASSING<br>CENTERLINE (SOUTHBOUND) | SKIP-DASH<br>YELLOW<br>PASSING<br>CENTERLINE | SOLID<br>WHITE<br>EDGE LINE |      |       |
| 513+45    | TO | 519+63  |  |  | 428  |                             |      |       |
| 519+63    | TO | 523+63  |  | 400  | 100  |                             |      |       |
| 523+63    | TO | 528+63  |  |  | 125  |                             |      |       |
| 528+63    | TO | 532+63  | 100  |  | 400  |                             |      |       |
| 532+63    | TO | 544+60  |  |  | 299  |                             |      |       |
| 544+60    | TO | 553+60  |  | 900  | 225  |                             |      |       |
| 553+60    | TO | 583+30  |  | 2970   | 2970   |                             |      |       |
| 583+30    | TO | 589+47  |  | 617  | 617  |                             |      |       |
| 589+47    | TO | 592+30  | 71   |  | 283  |                             |      |       |
| 592+30    | TO | 598+47  | 154  |  | 617  |                             |      |       |
| 598+47    | TO | 615+60  |  |  | 428  |                             |      |       |
| 615+60    | TO | 620+40  |  | 480  | 120  |                             |      |       |
| 620+40    | TO | 624+60  |  |  | 105  |                             |      |       |
| 624+60    | TO | 628+34  | 94   |  | 374  |                             |      |       |
| 628+34    | TO | 629+40  |  | 106  | 106  |                             |      |       |
| 629+40    | TO | 637+34  |  | 794  | 199  |                             |      |       |
| 637+34    | TO | 642+13  |  | 479  | 479  |                             |      |       |
| 642+13    | TO | 647+23  | 128  |  | 510  |                             |      |       |
| 647+23    | TO | 651+14  |  | 391  | 391  |                             |      |       |
| 651+14    | TO | 656+23  |  | 509  | 127  |                             |      |       |
| 656+23    | TO | 657+16  |  | 93   | 93   |                             |      |       |
| 657+16    | TO | 661+27  | 103  |  | 411  |                             |      |       |
| 661+27    | TO | 666+16  |  | 489  | 489  |                             |      |       |
| 666+16    | TO | 668+12  |  | 196  | 49   |                             |      |       |
| 668+12    | TO | 670+27  | 54   |  | 54   |                             |      |       |
| 670+27    | TO | 671+80  | 38   |  | 153  |                             |      |       |
| 671+80    | TO | 677+12  |  | 532  | 532  |                             |      |       |
| 677+12    | TO | 680+80  |  | 368  | 92   |                             |      |       |
| 680+80    | TO | 704+60  |  | 2380   | 2380   |                             |      |       |
| 704+60    | TO | 706+50  | 48   |  | 190  |                             |      |       |
| SUB-TOTAL |    |         | 788  | 11704  | 966  | 10994                       | 1112 | 37658 |
| TOTAL     |    |         | 63422 (USE 63430)  |  |  |                             |      |       |

| SUMMARY OF QUANTITIES  |          |  |        |                | CONSTRUCTION CODE |           |
|------------------------|----------|--|--------|----------------|-------------------|-----------|
| SPECIAL PROVISION (SP) | CODE NO. | DESCRIPTION  | UNIT   | TOTAL QUANTITY | 80% FEDERAL       | 20% LOCAL |
|                        |          |  |        |                | ROADWAY           |           |
|                        |          |  |        |                | 0005              |           |
|                        |          |  |        |                | RURAL             |           |
| SP                     | 30200550 | PROCESSING MODIFIED SOIL, 10"                      | SQ YD  | 50478          |                   | 50478     |
| SP                     | 30201700 | PORTLAND CEMENT                                    | TON    | 1257           |                   | 1257      |
| SP                     | 35101400 | AGGREGATE BASE COURSE, TYPE B                      | TON    | 700            |                   | 700       |
| SP                     | 40200800 | AGGREGATE SURFACE COURSE, TYPE B                   | TON    | 200            |                   | 200       |
| SP                     | 48102100 | AGGREGATE WEDGE SHOULDER, TYPE B                   | TON    | 479            |                   | 479       |
|                        | 50102400 | CONCRETE REMOVAL                                   | CU YD  | 2              |                   | 2         |
|                        | 50300255 | CONCRETE SUPERSTRUCTURE                            | CU YD  | 4              |                   | 4         |
|                        | 50800205 | REINFORCEMENT BARS, EPOXY COATED                   | POUND  | 620            |                   | 620       |
| *                      | 63100085 | TRAFFIC BARRIER TERMINAL, TYPE 6                   | EACH   | 4              |                   | 4         |
| *                      | 63100167 | TRAFFIC BARRIER TERMINAL, TYPE 1 (SPECIAL) TANGENT | EACH   | 4              |                   | 4         |
|                        | 63200310 | GUARDRAIL REMOVAL                                  | FOOT   | 300            |                   | 300       |
|                        | 67100100 | MOBILIZATION                                       | L SUM  | 1              |                   | 1         |
| *                      | 72000100 | SIGN PANEL-TYPE1                                   | SQ FT  | 79             |                   | 79        |
| *                      | 72501000 | TERMINAL MARKER-DIRECT APPLIED                     | EACH   | 4              |                   | 4         |
| *                      | 72900200 | METAL POST - TYPE B                                | FOOT   | 210            |                   | 210       |
| *                      | 78001120 | PAINT PAVEMENT MARKING - LINE 5"                   | FOOT   | 63430          |                   | 63430     |
| SP                     | LR403300 | SURFACE PROFILE MILLING                            | SQ YD  | 50478          |                   | 50478     |
| SP                     | LR403410 | BITUMINOUS MATERIALS (COVER AND SEAL COATS)        | GALLON | 42240          |                   | 42240     |
| SP                     | LR403500 | COVER COAT AGGREGATE                               | TON    | 1180           |                   | 1180      |
| SP                     | LR403600 | SEAL COAT AGGREGATE                                | TON    | 590            |                   | 590       |
| SP                     | X0327584 | GRADING AND SHAPING SHOULDER                       | FOOT   | 9154           |                   | 9154      |
| SP                     | X7010216 | TRAFFIC CONTROL AND PROTECTION, (SPECIAL)          | L SUM  | 1              |                   | 1         |
| SP                     | Z0013798 | CONSTRUCTION LAYOUT                                | L SUM  | 1              |                   | 1         |
| SP                     | X0100002 | GRADING AND SHAPING (SPECIAL)                      | SQ YD  | 2286           |                   | 2286      |

\* SPECIALITY ITEM

**NO PASSING ZONE SIGN**

| STATION +/- | SIDE | SIGN PANEL (W14-3) | METAL POST TY B |
|-------------|------|--------------------|-----------------|
|             |      | SQ FT              | FOOT            |
| 519+63      | LT   | 5.56               | 15              |
| 532+63      | RT   | 5.56               | 15              |
| 544+60      | LT   | 5.56               | 15              |
| 598+47      | RT   | 5.56               | 15              |
| 615+60      | LT   | 5.56               | 15              |
| 628+34      | LT   | 5.56               | 15              |
| 629+40      | RT   | 5.56               | 15              |
| 647+23      | LT   | 5.56               | 15              |
| 651+14      | RT   | 5.56               | 15              |
| 661+27      | LT   | 5.56               | 15              |
| 666+16      | RT   | 5.56               | 15              |
| 671+80      | LT   | 5.56               | 15              |
| 677+12      | RT   | 5.56               | 15              |
| 706+50      | RT   | 5.56               | 15              |
| TOTAL       |      | 77.8               | 210             |
| USE         |      | 79                 | 210             |

PROJECT: I-74/95 - Phase B - Interchange - Section 1 - Station 14+00 to Station 14+50 - 10/1/2021

**Hutchinson Engineering, Inc.**  
 Jacksonville • Peoria • Oquawka • Shorewood  
 Since 1945

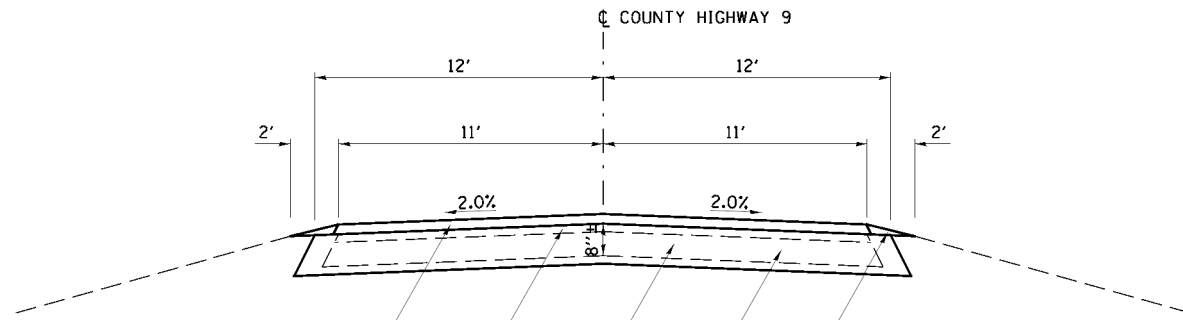
|                                |                 |           |
|--------------------------------|-----------------|-----------|
| USER NAME = SMH/egh            | DESIGNED - WSL  | REVISED - |
| FLGT SCALE = 2:000 = 1" = 100' | DRAWN - SRH     | REVISED - |
| FLGT DATE = 1/29/2021          | CHECKED - WSL   | REVISED - |
|                                | DATE = 11-10-20 | REVISED - |

**MERCER COUNTY  
HIGHWAY DEPARTMENT**

**COUNTY HIGHWAY 9  
GENERAL NOTES, SCHEDULES & SUMMARY OF QUANTITIES**

SCALE: N/A    SHEET 1 OF 1 SHEETS    STA. N/A TO STA. N/A

|                           |                        |               |                |             |
|---------------------------|------------------------|---------------|----------------|-------------|
| F.A.S. RTE. 212           | SECTION 19-00117-02-PV | COUNTY MERCER | TOTAL SHEETS 9 | SHEET NO. 2 |
| CONTRACT NO. 89783        |                        |               |                |             |
| ILLINOIS FED. AID PROJECT |                        |               |                |             |



- \*PROPOSED BITUMINOUS SURFACE TREATMENT, A-3
- EXISTING CHIP SEAL COAT SURFACE (1.5"± TO 6"±)
- EXISTING AGGREGATE BASE (2"± TO 6.5"±)
- PROPOSED PORTLAND CEMENT AND PROCESSING MODIFIED SOIL 10"
- PROPOSED AGGREGATE WEDGE SHOULDER, TYPE B (TYP)

**COUNTY HIGHWAY 9 TYPICAL SECTION**

STA. 513+45 TO STA. 706+50

\*PROPOSED BITUMINOUS SURFACE TREATMENT, A-3 SHALL CONSIST OF THE FOLLOWING PAY ITEMS:  
 BITUMINOUS MATERIALS (COVER AND SEAL COATS) - THE BITUMINOUS MATERIALS (COVER AND SEAL COATS) SHALL BE HFRS-2 APPLIED AT A RATE OF 0.3 GAL/SY.  
 COVER COAT AGGREGATE - THE COVER COAT AND SEAL COAT AGGREGATES SHALL BE 3/8" CLASS A - CA 16 (CRUSHED) APPLIED AT A RATE OF 25 LBS/SY.  
 SEAL COAT AGGREGATE

**NOTES**

1. EXISTING CROSS SLOPE IS VARIABLE.
2. EXISTING ROADWAY SURFACE IS 22'±.
3. PORTLAND CEMENT PERCENTAGE IS ESTIMATED TO BE 5% BY WEIGHT (10" DEEP AND 24' WIDE).
4. FINAL A-3 SURFACE SHALL BE 22' WIDE.
5. AGGREGATE SURFACE COURSE, TYPE B HAS BEEN INCLUDED FOR USE AT ENTRANCES AND AGGREGATE SIDE ROADS TO TAPER ANY ELEVATION DIFFERENCE BETWEEN THE EXISTING ENTRANCE/SIDE ROAD ELEVATION AND PROPOSED FINISHED ROADWAY ELEVATION, AS NECESSARY.
6. CONTRACTOR SHALL REPLACE GUARDRAIL AT THE STRUCTURE ON CH 9 LOCATED 0.8 MILES NORTH OF 92ND AVE. OVER EDWARDS RIVER.  
 GUARDRAIL REPLACEMENT AT THIS STRUCTURE SHALL INCLUDE THE FOLLOWING:  
 REMOVE AND REPLACE THE EXISTING PARAPET AT THE ENDS OF THE BRIDGE (ALL FOUR QUADRANTS- SEE SHT 9)  
  
 APPROACH ENDS: 1 TRAFFIC BARRIER TERMINAL, TYPE 6 (ATTACHED TO END OF PROPOSED CONCRETE PARAPET) (1 ON EACH APPROACH END) 1 TRAFFIC BARRIER TERMINAL, TYPE 1 (SPECIAL) TANGENT (ATTACHED TO END OF TRAFFIC BARRIER TERMINAL, TYPE 6)  
  
 OPPOSING ENDS: 1 TRAFFIC BARRIER TERMINAL, TYPE 6 (ATTACHED TO END OF PROPOSED CONCRETE PARAPET) (1 ON EACH OPPOSING END) 1 TRAFFIC BARRIER TERMINAL, TYPE 1 (SPECIAL) TANGENT (ATTACHED TO END OF TRAFFIC BARRIER TERMINAL, TYPE 6)
7. THE EMBANKMENT REQUIRED FOR GUARDRAIL FLARES WILL BE CONSTRUCTED BY MERCER COUNTY
8. SIDE ROADS WITH EXISTING CHIP SEAL SURFACES (4 LOCATIONS) WILL BE REQUIRED TO RECEIVE A BITUMINOUS SURFACE TREATMENT, A-3 TO THE END OF RADIUS RETURNS AFTER GRADING HAS BEEN COMPLETED.

MERCER County, Illinois - CH 9 EDR - Phase II - Mercer County South Section CADD - Sheet 0144199 - sht. 3 - typical.dwg

**Hutchison Engineering, Inc.**  
 Jacksonville • Peoria • Quad Cities • Shorewood  
 Since 1945

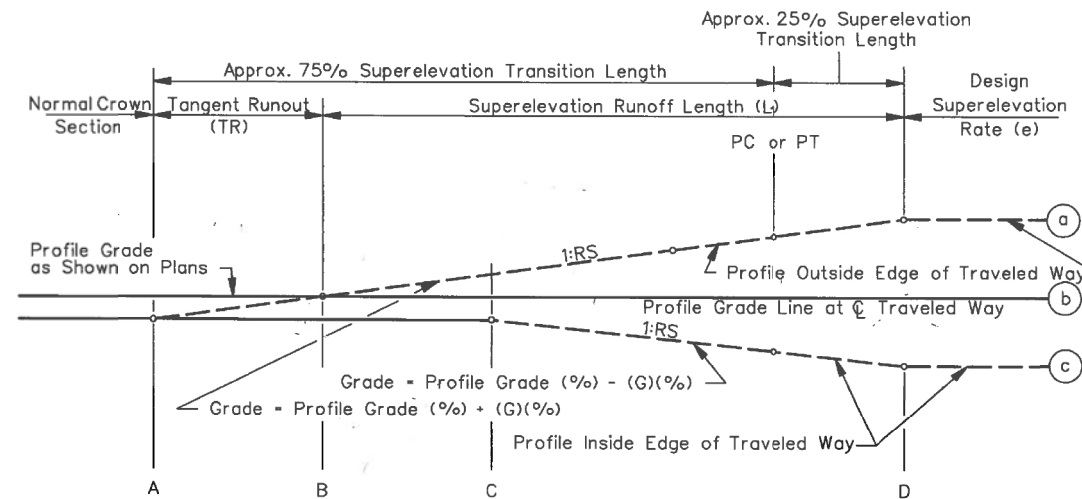
|                           |                 |           |
|---------------------------|-----------------|-----------|
| USER NAME = SMaharjan     | DESIGNED - WSL  | REVISED - |
|                           | DRAWN - SRH     | REVISED - |
| PLOT SCALE = 8,000' / in. | CHECKED - WSL   | REVISED - |
| PLOT DATE = 1/21/2021     | DATE - 11-10-20 | REVISED - |

**MERCER COUNTY  
 HIGHWAY DEPARTMENT**

**COUNTY HIGHWAY 9  
 TYPICAL SECTIONS**

SCALE: N/A SHEET 1 OF 1 SHEETS STA. N/A TO STA. N/A

|                    |                |        |                           |           |
|--------------------|----------------|--------|---------------------------|-----------|
| F.A.S. RTE.        | SECTION        | COUNTY | TOTAL SHEETS              | SHEET NO. |
| 212                | 19-00117-02-PV | MERCER | 9                         | 3         |
| CONTRACT NO. 89783 |                |        | ILLINOIS FED. AID PROJECT |           |



Note: Round all edge breakpoints in field.

NOTE: REFER TO THE TABLE FOR HIGH AND LOW SIDE OF THE SUPERELEVATION

| SECTIONS | CHAIN | STA       | LEFT   | RIGHT  | LEFT   | RIGHT  |
|----------|-------|-----------|--------|--------|--------|--------|
|          |       |           | e<br>A | e<br>A | e<br>B | e<br>B |
| A        | CH 9  | 578+42.4  | -2.0%  | -2.0%  |        |        |
| B        | CH 9  | 578+66.4  | 0.0%   | -2.0%  |        |        |
| PC       | CH 9  | 578+78.4  |        |        |        |        |
| D        | CH 9  | 578+90.4  | 2.0%   | -2.0%  |        |        |
| D        | CH 9  | 584+94.26 |        |        | 2.0%   | -2.0%  |
| PT       | CH 9  | 585+16.16 |        |        |        |        |
| B        | CH 9  | 585+53.76 |        |        | 0.0%   | -2.0%  |
| A        | CH 9  | 585+81.76 |        |        | -2.0%  | -2.0%  |

| SECTIONS | CHAIN | STA       | LEFT   | RIGHT  | LEFT   | RIGHT  |
|----------|-------|-----------|--------|--------|--------|--------|
|          |       |           | e<br>A | e<br>A | e<br>B | e<br>B |
| A        | CH 9  | 550+99.67 | -2.0%  | -2.0%  |        |        |
| B        | CH 9  | 551+24.67 | 0.0%   | -2.0%  |        |        |
| C        | CH 9  | 551+49.67 | 2.0%   | -2.0%  |        |        |
| PC       | CH 9  | 551+59.67 |        |        |        |        |
| D        | CH 9  | 551+79.67 | 3.3%   | -3.3%  |        |        |
| D        | CH 9  | 556+50.64 |        |        | 3.3%   | -3.3%  |
| PT       | CH 9  | 556+70.64 |        |        |        |        |
| C        | CH 9  | 557+00.64 |        |        | 2.0%   | -2.0%  |
| B        | CH 9  | 557+25.64 |        |        | 0.0%   | -2.0%  |
| A        | CH 9  | 557+50.64 |        |        | -2.0%  | -2.0%  |

| SECTIONS | CHAIN | STA       | LEFT   | RIGHT  | LEFT   | RIGHT  |
|----------|-------|-----------|--------|--------|--------|--------|
|          |       |           | e<br>A | e<br>A | e<br>B | e<br>B |
| A        | CH 9  | 679+07.27 | -2.0%  | -2.0%  |        |        |
| B        | CH 9  | 679+32.27 | -2.0%  | 0.0%   |        |        |
| C        | CH 9  | 679+57.27 | -2.0%  | 2.0%   |        |        |
| PC       | CH 9  | 679+72.27 |        |        |        |        |
| D        | CH 9  | 679+93.27 | -3.6%  | 3.6%   |        |        |
| D        | CH 9  | 687+76.81 |        |        | -3.6%  | 3.6%   |
| PT       | CH 9  | 687+97.81 |        |        |        |        |
| C        | CH 9  | 688+12.81 |        |        | -2.0%  | 2.0%   |
| B        | CH 9  | 688+37.81 |        |        | -2.0%  | 0.0%   |
| A        | CH 9  | 688+62.81 |        |        | -2.0%  | -2.0%  |

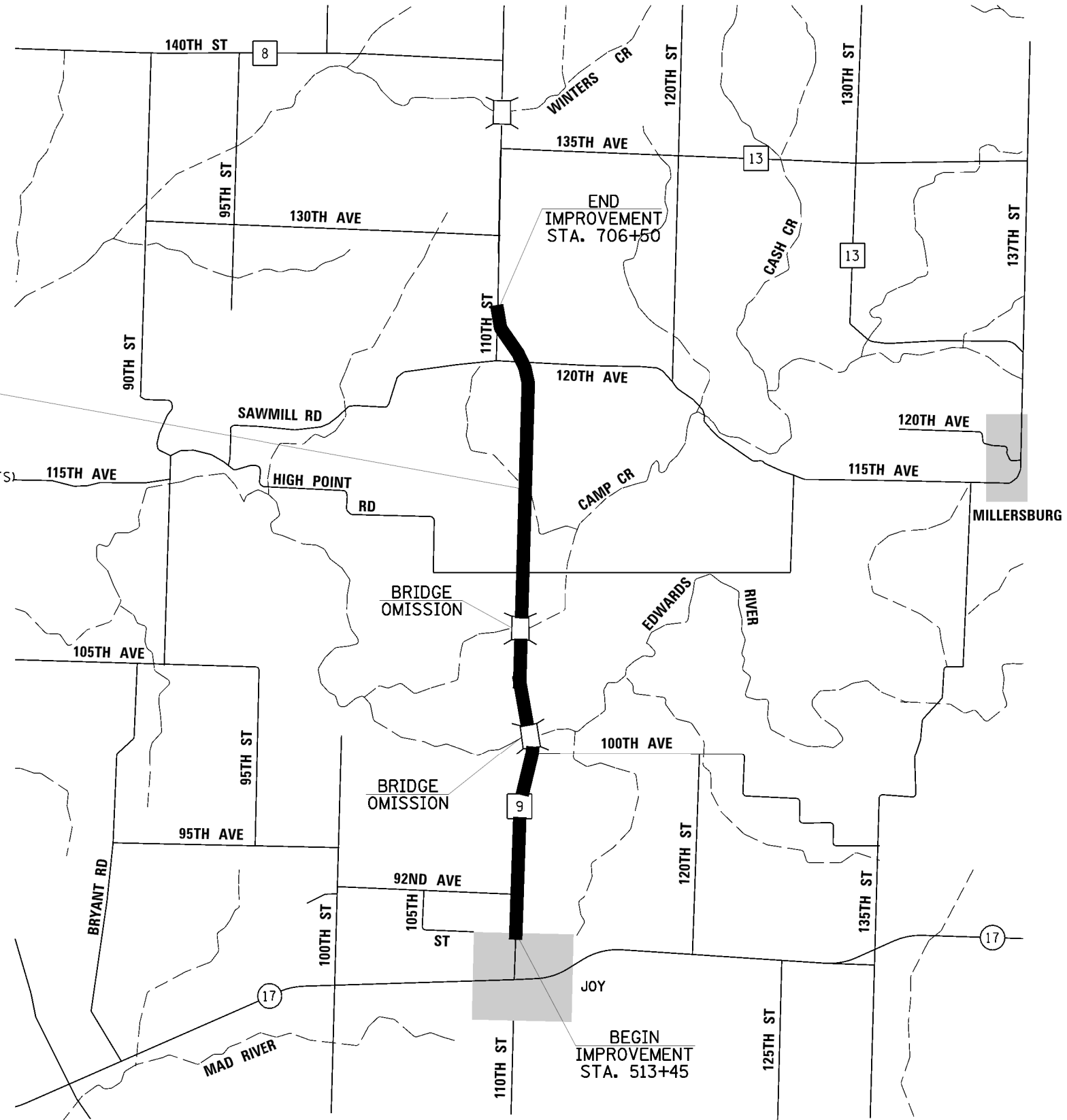
| SECTIONS | CHAIN | STA       | LEFT   | RIGHT  | LEFT   | RIGHT  |
|----------|-------|-----------|--------|--------|--------|--------|
|          |       |           | e<br>A | e<br>A | e<br>B | e<br>B |
| A        | CH 9  | 561+91.8  | -2.0%  | -2.0%  |        |        |
| B        | CH 9  | 562+16.8  | -2.0%  | 0.0%   |        |        |
| C        | CH 9  | 562+41.8  | -2.0%  | 2.0%   |        |        |
| PC       | CH 9  | 562+63.8  |        |        |        |        |
| D        | CH 9  | 562+87.8  | -4.2%  | 4.2%   |        |        |
| D        | CH 9  | 568+61.09 |        |        | -4.2%  | 4.2%   |
| PT       | CH 9  | 568+85.09 |        |        |        |        |
| C        | CH 9  | 569+07.09 |        |        | -2.0%  | 2.0%   |
| B        | CH 9  | 569+32.09 |        |        | -2.0%  | 0.0%   |
| A        | CH 9  | 569+57.09 |        |        | -2.0%  | -2.0%  |

| SECTIONS | CHAIN | STA       | LEFT   | RIGHT  | LEFT   | RIGHT  |
|----------|-------|-----------|--------|--------|--------|--------|
|          |       |           | e<br>A | e<br>A | e<br>B | e<br>B |
| A        | CH 9  | 691+96.91 | -2.0%  | -2.0%  |        |        |
| B        | CH 9  | 692+21.91 | 0.0%   | -2.0%  |        |        |
| PC       | CH 9  | 692+44.91 |        |        |        |        |
| C        | CH 9  | 692+46.91 | 2.0%   | -2.0%  |        |        |
| D        | CH 9  | 692+60.91 | 2.4%   | -2.4%  |        |        |
| D        | CH 9  | 705+98.66 |        |        | 2.4%   | -2.4%  |
| C        | CH 9  | 706+12.66 |        |        | 2.0%   | -2.0%  |
| PT       | CH 9  | 706+14.66 |        |        |        |        |
| B        | CH 9  | 706+37.66 |        |        | 0.0%   | -2.0%  |
| A        | CH 9  | 706+62.66 |        |        | -2.0%  | -2.0%  |

MICHEL Dufail  
FILE: D:\Users\jv1999 - CH 9 HDR - Phase II\Mercer\_Co\ISouth\_Section\CADD\CADD\_Sheets\044199-ah-4-superelevation.dgn



FULL-DEPTH RECLAMATION LIMITS  
 NORTH CORPORATE LIMITS OF THE  
 VILLAGE OF JOY TO 110TH ST  
 PAY ITEMS INCLUDE:  
 -PROCESSING MODIFIED SOIL, 10"  
 -PORTLAND CEMENT  
 -SURFACE PROFILE MILLING  
 -BITUMINOUS MATERIALS (COVER AND SEAL COATS)  
 -COVER COAT AGGREGATE  
 -SEAL COAT AGGREGATE  
 -PAINT PAVEMENT MARKING - LINE 5"



MODEL: V:\4399 - CH 9 I.D.R. - Phase II Improv. Coils\South Section\CADD\CADD\_Sheet0144199-ah5-5.plt.dwg  
 FILE NAME: V:\4399 - CH 9 I.D.R. - Phase II Improv. Coils\South Section\CADD\CADD\_Sheet0144199-ah5-5.plt.dwg

**Hutchison Engineering, Inc.**  
 Jacksonville • Peoria • Quad Cities • Shorewood  
 Since 1945

|                           |                 |           |
|---------------------------|-----------------|-----------|
| USER NAME = SMaharjan     | DESIGNED - WSL  | REVISED - |
| PLOT SCALE = 2,000' / in. | DRAWN - SRH     | REVISED - |
| PLOT DATE = 1/19/2021     | CHECKED - WSL   | REVISED - |
|                           | DATE - 11-10-20 | REVISED - |

**MERCER COUNTY  
 HIGHWAY DEPARTMENT**

**COUNTY HIGHWAY 9  
 OVERALL PLAN**

SCALE: N/A SHEET 1 OF 1 SHEETS STA. N/A TO STA. N/A

| F.A.S. RTE.               | SECTION        | COUNTY | TOTAL SHEETS | SHEET NO. |
|---------------------------|----------------|--------|--------------|-----------|
| 212                       | 19-00117-02-PV | MERCER | 9            | 5         |
| CONTRACT NO. 89783        |                |        |              |           |
| ILLINOIS FED. AID PROJECT |                |        |              |           |



MICHEL DUBOIS  
 FILE NUMBER: V10999 - CH 9 HDR - Phase II Mercer County South Section/CADD/CADD Sheets/D44199-Sub-6-ATB1.dwg

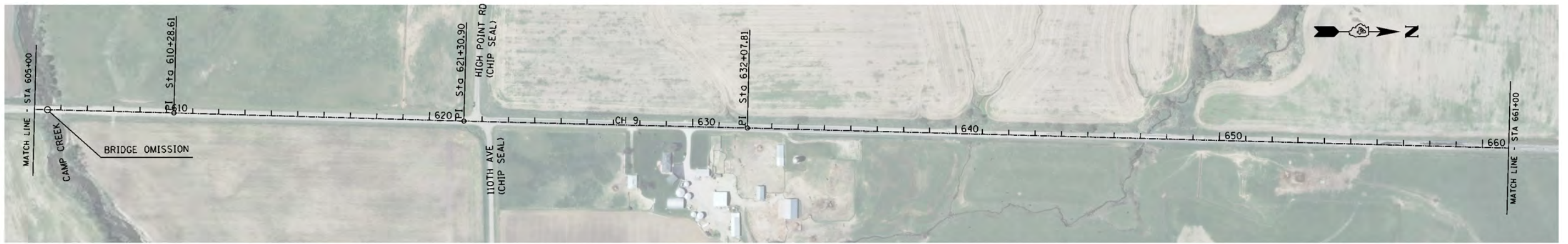
|                             |                 |           |
|-----------------------------|-----------------|-----------|
| USER NAME = SMaharjan       | DESIGNED - WSL  | REVISED - |
|                             | DRAWN - SRH     | REVISED - |
| PLOT SCALE = 400.000' / in. | CHECKED - WSL   | REVISED - |
| PLOT DATE = 1/24/2021       | DATE - 11-10-20 | REVISED - |

**MERCER COUNTY  
HIGHWAY DEPARTMENT**

|        |  |       |                |           |   |      |         |
|--------|--|-------|----------------|-----------|---|------|---------|
| SCALE: |  | SHEET |                | OF SHEETS |   | STA. | TO STA. |
|        |  | 212   | 19-00117-02-PV | MERCER    | 9 | 6    |         |

**COUNTY HIGHWAY 9  
HORIZONTAL ALIGNMENT**

|                           |                |        |              |           |
|---------------------------|----------------|--------|--------------|-----------|
| F.A. RTE.                 | SECTION        | COUNTY | TOTAL SHEETS | SHEET NO. |
| 212                       | 19-00117-02-PV | MERCER | 9            | 6         |
| CONTRACT NO. 89783        |                |        |              |           |
| ILLINOIS FED. AID PROJECT |                |        |              |           |



MICHEL Dohault  
 FILE NUMBER: V1999 - CH 9 HDR - Phase II (Mercer County) South Section (CAD) CAD - Sheets (1) 144199 - Job: 7-AT102.dgn

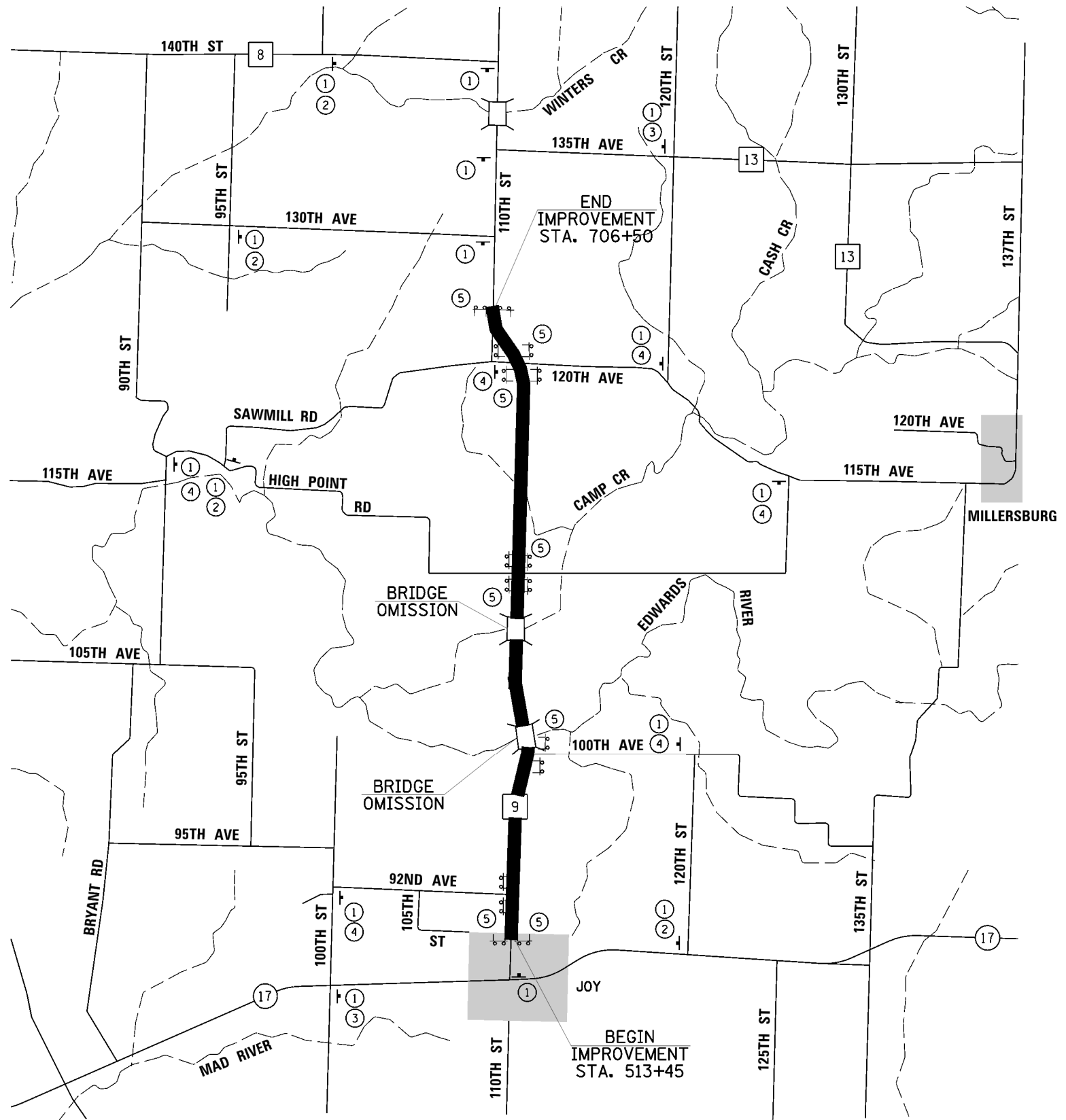
|                             |                 |           |
|-----------------------------|-----------------|-----------|
| USER NAME = SMaharjan       | DESIGNED - WSL  | REVISED - |
| PLOT SCALE = 400.000' / in. | CHECKED - WSL   | REVISED - |
| PLOT DATE = 1/19/2021       | DATE - 11-10-20 | REVISED - |

**MERCER COUNTY  
 HIGHWAY DEPARTMENT**

**COUNTY HIGHWAY 9  
 HORIZONTAL ALIGNMENT**

SCALE: SHEET OF SHEETS STA. TO STA.

| F.A. RTE.                 | SECTION        | COUNTY | TOTAL SHEETS | SHEET NO. |
|---------------------------|----------------|--------|--------------|-----------|
| 212                       | 19-00117-02-PV | MERCER | 9            | 7         |
| CONTRACT NO. 89783        |                |        |              |           |
| ILLINOIS FED. AID PROJECT |                |        |              |           |



**LEGEND**

① ROAD CLOSED AHEAD

② RIGHT TRAFFIC ONLY

③ LEFT TRAFFIC ONLY

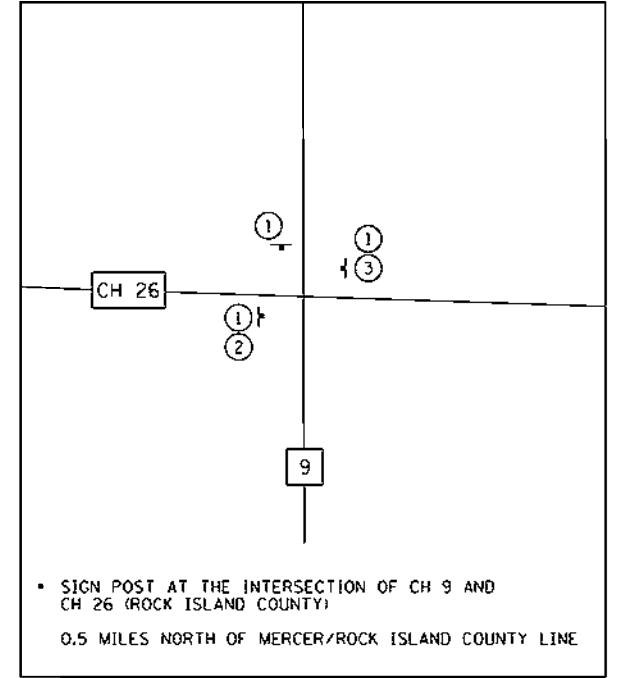
④ TWO-WAY TRAFFIC

⑤ ROAD CLOSED

⑥ ROAD CLOSED TO THRU TRAFFIC

— POST MOUNTED SIGN

— TYPE III BARRICADE



**MAINTENANCE OF TRAFFIC NOTES:**

1. LENGTH OF PROJECT SHALL BE TEMPORARILY SIGNED WITH SIGN G20-1100 (NO PASSING ZONES NOT STRIPED NEXT XX MILES PER IL MUTCD). ANY EXISTING PASSING ZONES SIGNS SHALL BE COVERED UNTIL PERMANENT PAVEMENT MARKINGS HAVE BEEN PLACED.
2. ALL WORK ASSOCIATED WITH MAINTENANCE OF TRAFFIC SHALL BE PAID FOR AS TRAFFIC CONTROL AND PROTECTION (SPECIAL).
3. THE ROAD SHALL BE CLOSED TO "LOCAL TRAFFIC ONLY" FROM THE START OF THE PULVERIZATION PROCESS TO THE END OF THE CEMENT CURING PERIOD.

MICHEL Default  
 FILE: D:\mch\proj\9999 - CH 9 EDR - Phase II (Mercer) Co\South Section\CADD\CADD\_Sheets\1344599.dwg, 8/24/2021 9:41 AM

**Hutchison Engineering, Inc.**  
 Jacksonville • Peoria • Quad Cities • Shorewood  
 Since 1945

|                           |                 |           |
|---------------------------|-----------------|-----------|
| USER NAME = SMaharjan     | DESIGNED - WSL  | REVISED - |
| PLOT SCALE = 2,000' / in. | DRAWN - SRH     | REVISED - |
| PLOT DATE = 1/19/2021     | CHECKED - WSL   | REVISED - |
|                           | DATE - 11-10-20 | REVISED - |

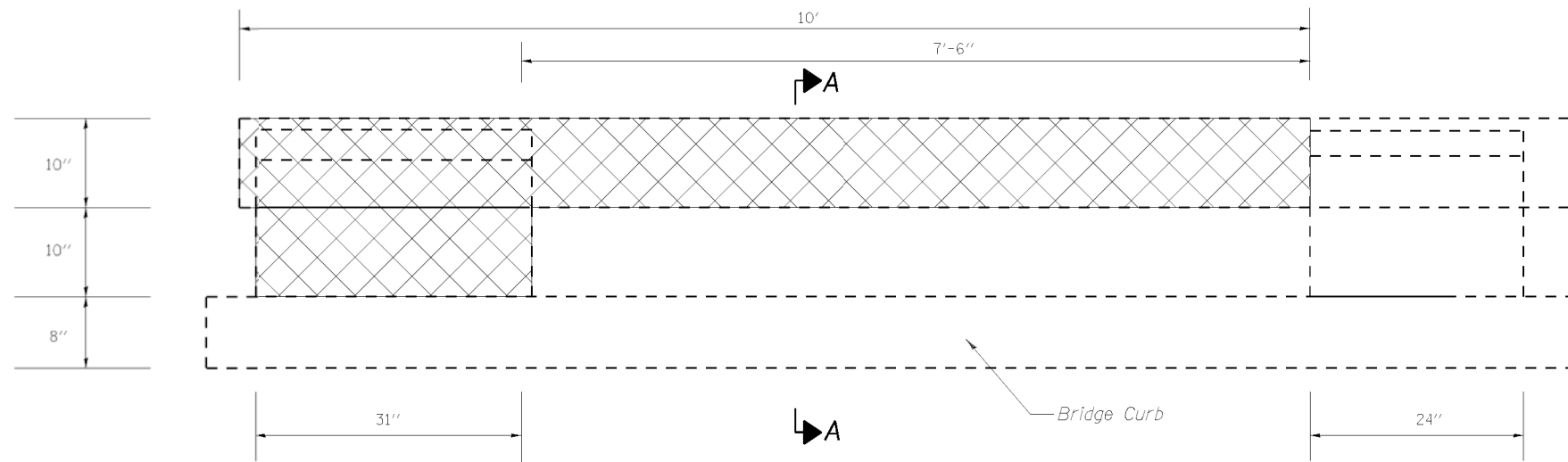
**MERCER COUNTY  
HIGHWAY DEPARTMENT**

**COUNTY HIGHWAY 9  
TRAFFIC CONTROL PLAN**

SCALE: N/A SHEET 1 OF 1 SHEETS STA. N/A TO STA. N/A

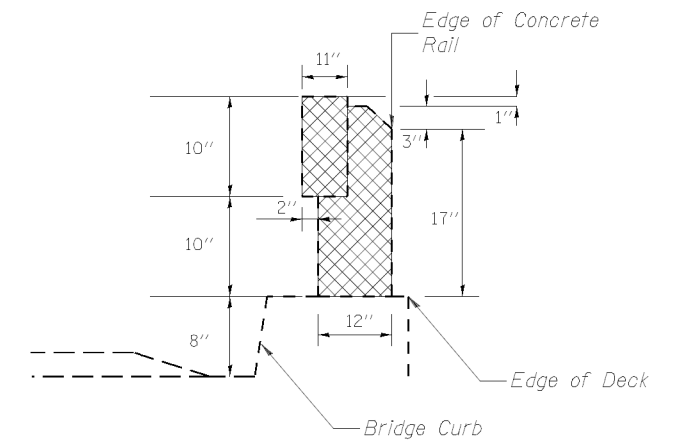
| F.A.S. RTE.               | SECTION        | COUNTY | TOTAL SHEETS | SHEET NO. |
|---------------------------|----------------|--------|--------------|-----------|
| 212                       | 19-00117-02-PV | MERCER | 9            | 8         |
| CONTRACT NO. 89783        |                |        |              |           |
| ILLINOIS FED. AID PROJECT |                |        |              |           |





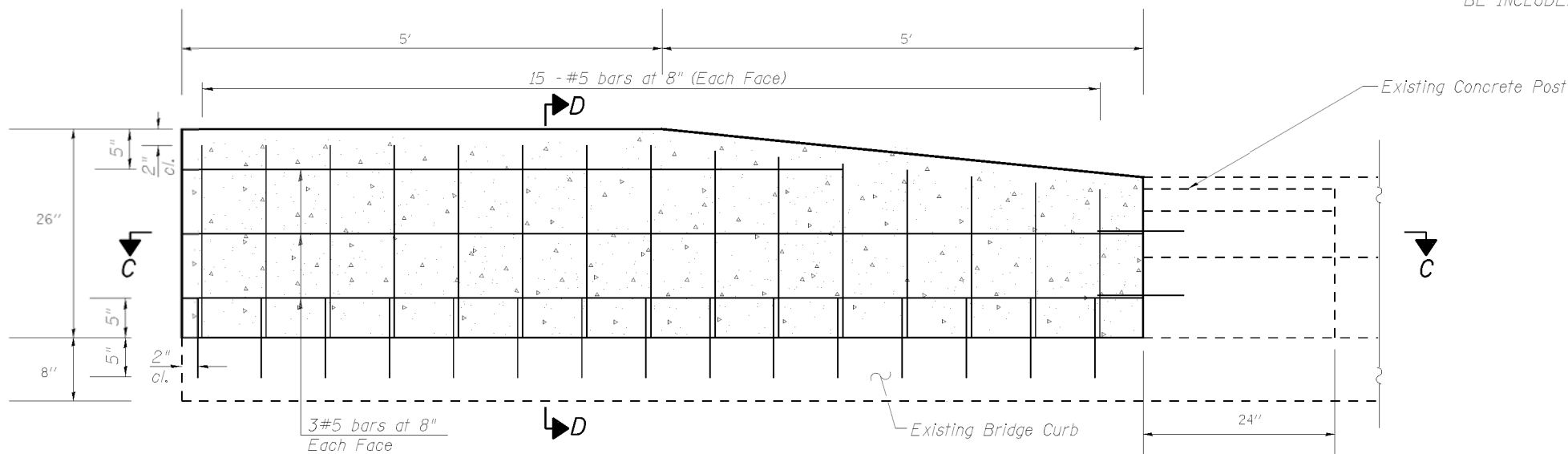
**INSIDE ELEVATION OF EXISING RAIL**

EXISTING CONCRETE REMOVAL

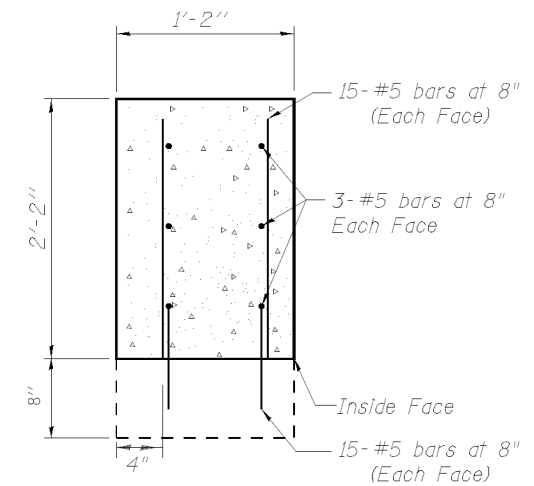


**SECTION A-A (CONCRETE REMOVAL)**

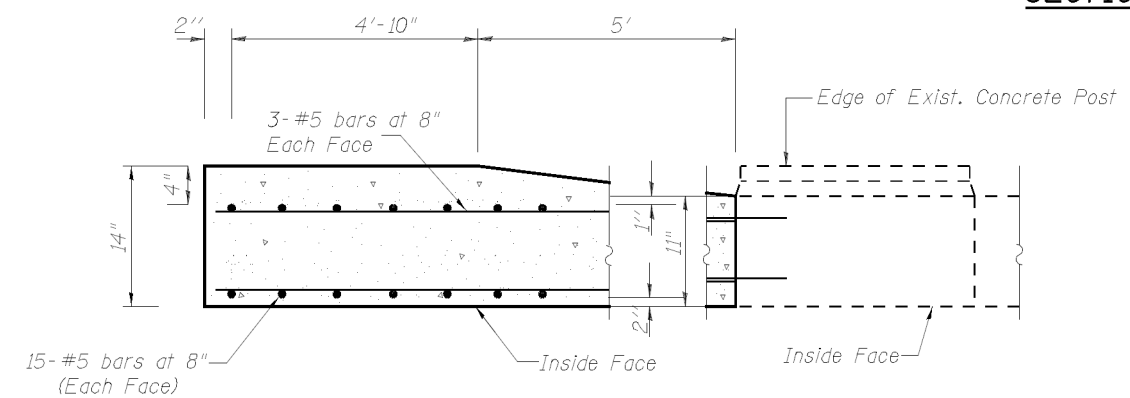
- NOTE:
1. PROPOSED DETAIL IS TYPICAL FOR ALL FOUR QUADRANTS OF THE BRIDGE LOCATED APPROX. 0.8 MILES NORTH OF 92ND AVE. OVER EDWARDS RIVER. (© STA. 571+24.00)
  2. EXISTING NAME PLATE LOCATED ON THE NORTH WEST CONCRETE RAIL SHALL BE RELOCATED AND ATTACHED TO PROPOSED CONCRETE PARAPET ADJACENT TO THREE BEAM END SHOE FOR TRAFFIC BARRIER TERMINAL TYPE 6. COST SHALL BE INCLUDED IN THE COST OF THE CONCRETE SUPERSTRUCTURE PAY ITEM.



**REINFORCEMENT PLACEMENT  
PROPOSED PARAPET RAIL**  
(Inside Face)



**SECTION D-D**



**SECTION C-C**

Notes:  
All concrete for railing wall shall be Class BS according to Article 1020.04 of the Standard Specifications. Surface of railing shall receive a rubbed finish according to Article 503.15(b) of the Standard Specifications.

Contractor shall preserve as much existing steel rebar as possible upon removal of existing concrete rail to use to tie into proposed concrete parapet.

**MIN. BAR LAP**  
#5 bars = 2'-6"

MICHEL Defaut  
FILE: D:\mch\19-099 - CH 9 FDR - Phase II - Mercer Co\South Section\CADD\CADD Sheets\19-099-Sub 9-Concrete Bridge Railing.dgn

**Hutchison Engineering, Inc.**  
Jacksonville • Peoria • Quad Cities • Shorewood  
Since 1945

|                           |                 |           |
|---------------------------|-----------------|-----------|
| USER NAME = SMaharjan     | DESIGNED - WSL  | REVISED - |
|                           | DRAWN - SRH     | REVISED - |
| PLOT SCALE = 1:6000' / in | CHECKED - WSL   | REVISED - |
| PLOT DATE = 1/24/2021     | DATE - 11-10-20 | REVISED - |

**MERCER COUNTY  
HIGHWAY DEPARTMENT**

**COUNTY HIGHWAY 9  
CONCRETE BRIDGE RAILING**

SCALE: N/A SHEET 1 OF 1 SHEETS STA. N/A TO STA. N/A

|                           |                |        |              |           |
|---------------------------|----------------|--------|--------------|-----------|
| F.A.S R.T.E.              | SECTION        | COUNTY | TOTAL SHEETS | SHEET NO. |
| 212                       | 19-00117-02-PV | MERCER | 9            | 9         |
| CONTRACT NO. 89783        |                |        |              |           |
| ILLINOIS FED. AID PROJECT |                |        |              |           |