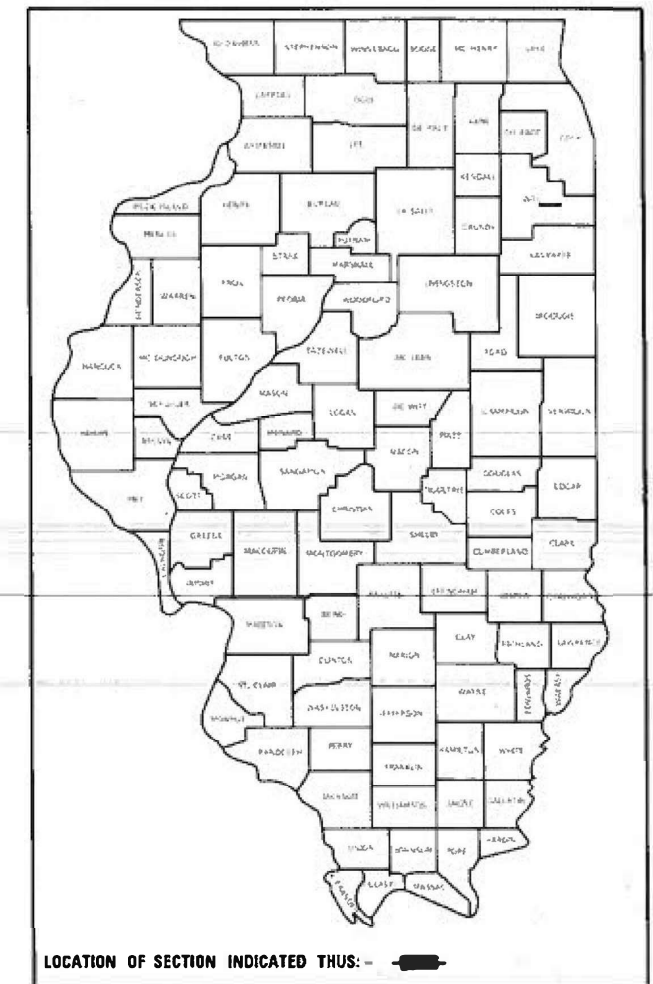


STATE OF ILLINOIS  
DEPARTMENT OF TRANSPORTATION

F.A.P. RTE.	SECTION	COUNTY	TOTAL SHEETS	SHEET NO.
531	2020-152-BR	WILL	11	1
ILLINOIS			CONTRACT NO. 62M27	

D-91-560-20



**PROPOSED  
HIGHWAY PLANS**

FAP ROUTE 531: MONEE-MANHATTAN  
OVER PRAIRIE CREEK  
SECTION 2020-152-BR  
PROJECT: STP-YIH6(696)

**BRIDGE JOINT REPLACE /REPAIR, BRIDGE DECK OVERLAY  
WILL COUNTY  
C-91-359-20**

FOR INDEX OF SHEETS, SEE SHEET NO. 2

IMPROVEMENTS ARE LOCATED  
IN GREEN GARDEN TWP

**TRAFFIC DATA:**

MONEE-MANHATTAN RD

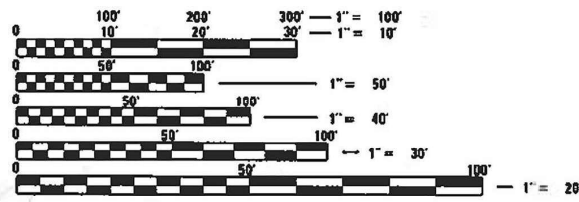
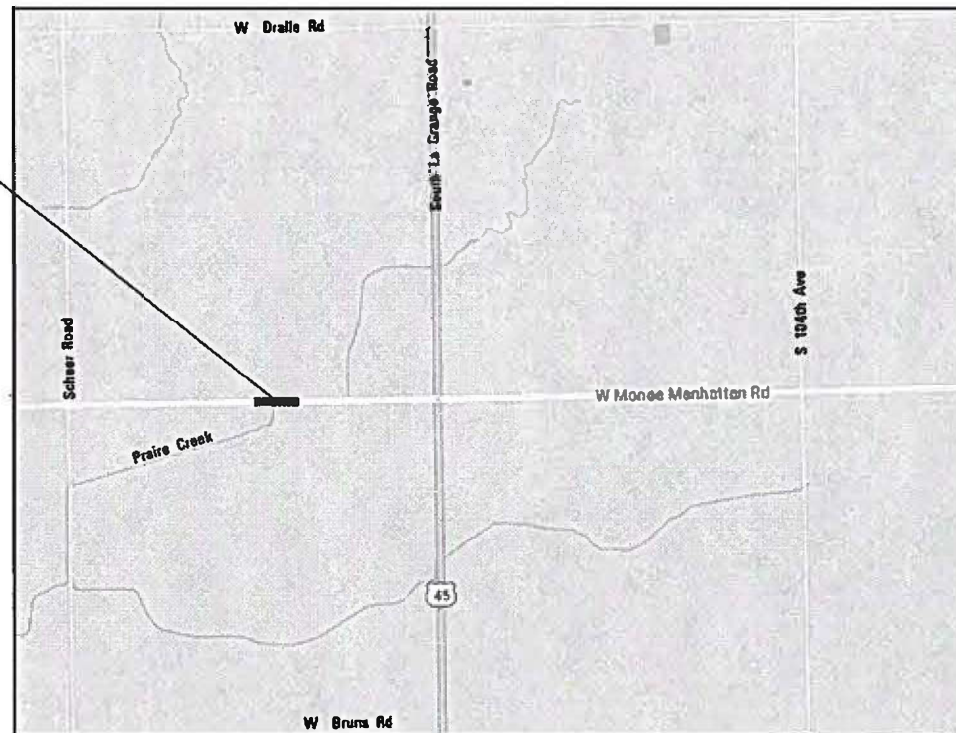
2019 ADT=5250

POSTED SPEED LIMIT=55MPH

R 12 E

WEST MONEE-MANHATTAN RD  
SN 099-0310

T 34 N



FULL SIZE PLANS HAVE BEEN PREPARED USING STANDARD ENGINEERING SCALES. REDUCED SIZED PLANS WILL NOT CONFORM TO STANDARD SCALES. IN MAKING MEASUREMENTS ON REDUCED PLANS THE ABOVE SCALES MAY BE USED.

J.U.L.I.E.  
JOINT UTILITY LOCATION INFORMATION FOR EXCAVATORS  
1-800-892-0123  
OR 811

PROJECT MANAGER: MIDY, J. ALAIN

CONTRACT NO. 62M27

STATE OF ILLINOIS  
DEPARTMENT OF TRANSPORTATION

SUBMITTED March 11 2021

[Signature]  
REGIONAL ENGINEER

March 19 2021

[Signature]  
ENGINEER OF DESIGN AND ENVIRONMENT

March 19 2021

[Signature]  
DIRECTOR OF HIGHWAYS PROJECT IMPLEMENTATION 13

PRINTED BY THE AUTHORITY  
OF THE STATE OF ILLINOIS

**INDEX OF SHEETS**

SHEET NO.	DESCRIPTION
1	TITLE SHEET
2	INDEX OF SHEETS, STATE STANDARDS AND GENERAL NOTES
3	SUMMARY OF QUANTITIES
4-6	BRIDGE REPAOIR DETAILS - SN 099-0310
7	DETOUR DURING STAGE CONSTRUCTION
8	BUTT JOINT AND HMA TAPER DETAILS *BD-32)
9	DISTRICT ONE TYPICAL PAVEMENT MARKING (TC-13)
10	DETOUR SIGNING FOR CLOSING STATE HIGHWAYS (TC-21)
11	ARTERIAL ROAD INFORMATION SIGN (TC-22)

**STATE STANDARDS**

STANDARD NO.	DESCRIPTION
701901-08	TRAFFIC CONTROL DEVICES

HOT-MIX ASPHALT MIXTURE REQUIREMENTS		QUALITY MANAGEMENT PROGRAM (QMP)
MIXTURE TYPE	AIR VOIDS Ndes	
APPROACH OVERLAY		
HOT-MIX ASPHALT SURFACE COURSE, MIX D, IL-9.5, N70, 1 1/2"	4% @ 70 Gyr	QA/QC
QMP Designations: Quality Control/Quality Assurance (QC/QA)		

**NOTE:**

THE UNIT WEIGHT USED TO CALCULATE ALL HOT-MIX ASPHALT SURFACE MIXTURES IS 112 LBS/SQ.YD/IN.  
 THE "AC TYPE" FOR POLYMERIZED HMA MIXES SHALL BE "SBS/SBR PG 76-22" AND FOR NON-POLYMERIZED HMA THE "AC TYPE" SHALL BE "PG 64-22" UNLESS MODIFIED BY SPECIAL PROVISIONS.  
 FOR USE OF RECYCLED MATERIALS SEE SPECIAL PROVISIONS.  
 QUALITY MANAGEMENT PROGRAM (QMP) IDENTIFIES THE PARTICULAR QUANTITY CONTROL SPECIFICATION THAT APPLIES TO THE XTURE.

**GENERAL NOTES**

BEFORE STARTING ANY EXCAVATION, THE CONTRACTOR SHALL CALL "J.U.L.I.E". AT (800) 892-0123 OR 811 FOR FIELD LOCATIONS OF BURIED ELECTRIC, TELEPHONE AND GAS UTILITIES. 48 HOUR NOTIFICATION IS REQUIRED.

THE CONTRACTOR SHALL COORDINATE CONSTRUCTION ACTIVITIES WITH UTILITY COMPANIES AND GREEN GARDEN TOWNSHIP.

ALL DAMAGE TO EXISTING PAVEMENT MARKINGS OR RAISED REFLECTIVE PAVEMENT MARKERS OUTSIDE THE REMOVAL LINE SHOWN ON THE PLANS SHALL BE REPLACED AT NO ADDITIONAL COST TO THE DEPARTMENT.

THE CONTRACTOR WILL NOT BE ALLOWED TO SET UP A YARD OR FIELD OFFICE ON STATE PROPERTY WITHOUT WRITTEN PERMISSION FROM THE DEPARTMENT.

BEFORE BEGINING ANY WORK, THE CONTRACTOR SHALL RETAIN AND RECORD FOR FUTURE REFERENCE ALL EXISTING PAVEMENT MARKING LINES (AND RAISED REFLECTIVE PAVEMENT MARKINGS) IN ORDER THAT THESE LOCATIONS CAN BE RE-ESTABLISHED FOR STRIPPING. EXACT LOCATION OF ALL PAVEMENT MARKINGS SHALL BE AS DIRECTED BY THE ENGINEER.

IT SHALL BE THE CONTRACTOR'S RESPONSIBILITY TO VERIFY ALL DIMENSIONS AND CONDITIONS EXISTING IN THE FIELD PRIOR TO CONSTRUCTION AND ORDERING OF MATERIALS.

THE CONTRACTOR SHALL CONTACT THE DISTRICT ONE TRAFFIC CONTROL SUPERVISOR VIA EMAIL Kalpana.Kannan-Hosadurgo@illinois.gov A MINIMUM OF 72 HOURS IN ADVANCE OF BEGINNING WORK.

THE RESIDENT ENGINEER SHALL CONTACT AREA TRAFFIC FIELD ENGINEER ERIC CAMPOS VIA EMAIL AT Eric.Campos@illinois.gov A MINIMUM OF TWO (2) WEEKS PRIOR TO THE PLACEMENT OF PERMANENT PAVEMENT MARKINGS.

THE CONTRACTOR SHALL BE REQUIRED TO PROVIDE ACCESS TO ABUTTING PROPERTY AT ALL TIMES DURING THE CONSTRUCTION OF THIS PROJECT.

DO NOT SCALE PLANS FOR CONSTRUCTION DIMENSIONS.

THE CONTRACTOR SHALL BE RESPONSIBLE FOR THE NOTIFICATION OF ALL EMERGENCY SERVICES, SCHOOL DISTRICTS, IDOT'S COMMUNICATIONS CENTER, SPRINGFIELD TRIUCK PERMIT SECTION AND OTHER AGENCIES AFFECTED BY THE CLOSURE. THE CONTRACTOR SHALL ALSO BE RESPONSIBLE FOR POSTING SIGNS THAT WILL INDICATE THE DATES THE CLOSURE WILL BE IN PLACE.

Model: Default  
 File: \\mshrcam01.dia.illinois.gov\PI\DOT\Documents\DOT\_Offices\District 1\Projects\15620\CADD\Drawings\15620-ahb-01ah.dgn

USER NAME = gorenautab	DESIGNED -	REVISED -	<b>STATE OF ILLINOIS DEPARTMENT OF TRANSPORTATION</b>	<b>MONEE MANHATTAN ROAD BRIDGE OVER PRAIRIE CREEK STATE STANDARDS, GENERAL NOTES</b>	F.A.P. RTE. = 531	SECTION = 2020-152-BR	COUNTY = WILL	TOTAL SHEETS = 11	SHEET NO. = 2		
PLOT SCALE = 100.0000' / in.	CHECKED -	REVISED -			CONTRACT NO. 62M27						
PLOT DATE = 1/5/2021	DATE -	REVISED -			SCALE:	SHEET OF SHEETS	STA. TO STA.	ILLINOIS FED. AID PROJECT			

SUMMARY OF QUANTITIES			TOTAL QUANTITIES	CONSTRUCTION TYPE CODE 0013				
CODE NO	ITEM	UNIT		URBAN 80% FED 20% STATE 0013				
40600290	BITUMINOUS MATERIALS (TACK COAT)	POUND	194	194				
40600982	HOT-MIX ASPHALT SURFACE REMOVAL - BUTT JOINT	SO YD	214	214				
40604062	HOT-MIX ASPHALT SURFACE COURSE, IL-9.5, MIX "D", N70	TON	37	37				
50300260	BRIDGE DECK GROOVING	SO YD	211	211				
50300300	PROTECTIVE COAT	SO YD	225	225				
67000400	ENGINEER'S FIELD OFFICE, TYPE A	CAL MO	6	6				
67100100	MOBILIZATION	L SUM	1	1				
* 78009004	MODIFIED URETHANE PAVEMENT MARKING - LINE 4"	FOOT	3700	3700				
X0326766	CLEAN & RESEAL RELIEF JOINT	FOOT	74	74				
X7010216	TRAFFIC CONTROL AND PROTECTION, (SPECIAL)	L SUM	1	1				
Z0001800	APPROACH SLAB REPAIR (PARTIAL DEPTH)	SO YD	5	5				
Z0006012	BRIDGE DECK LATEX CONCRETE OVERLAY, 2 1/4 INCHES	SO YD	225	225				
Z0012130	BRIDGE DECK SCARIFICATION 3/4"	SO YD	225	225				
* SPECIALTY ITEM								

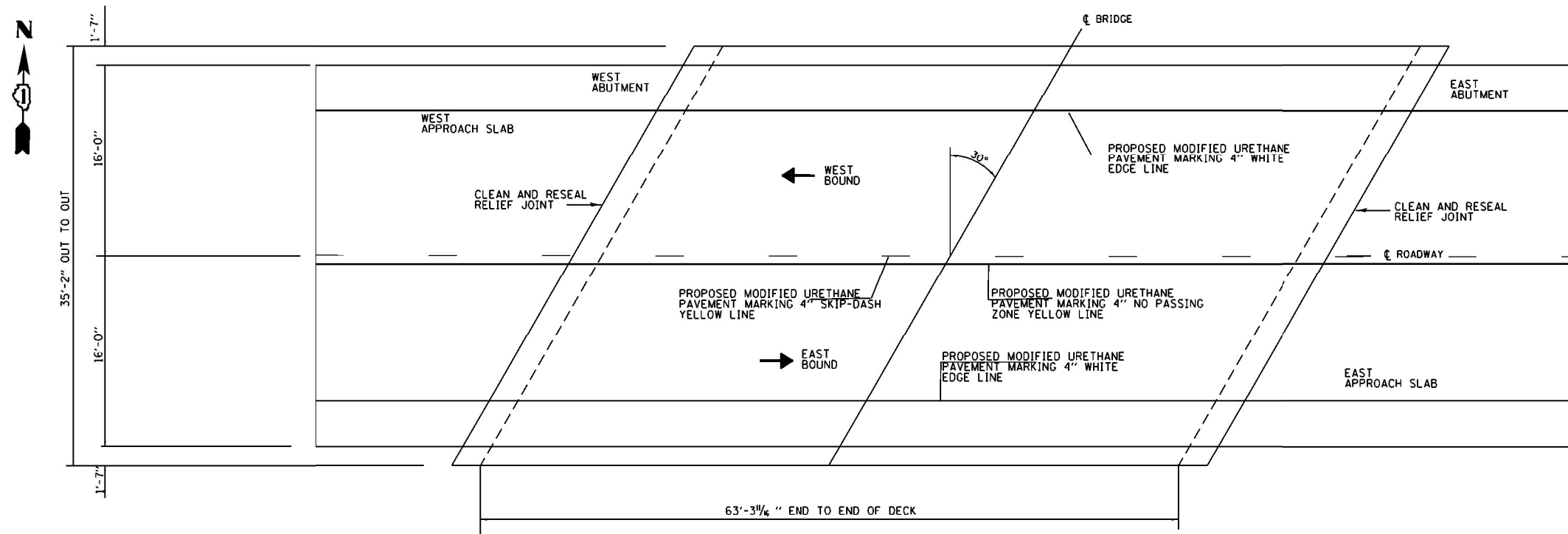
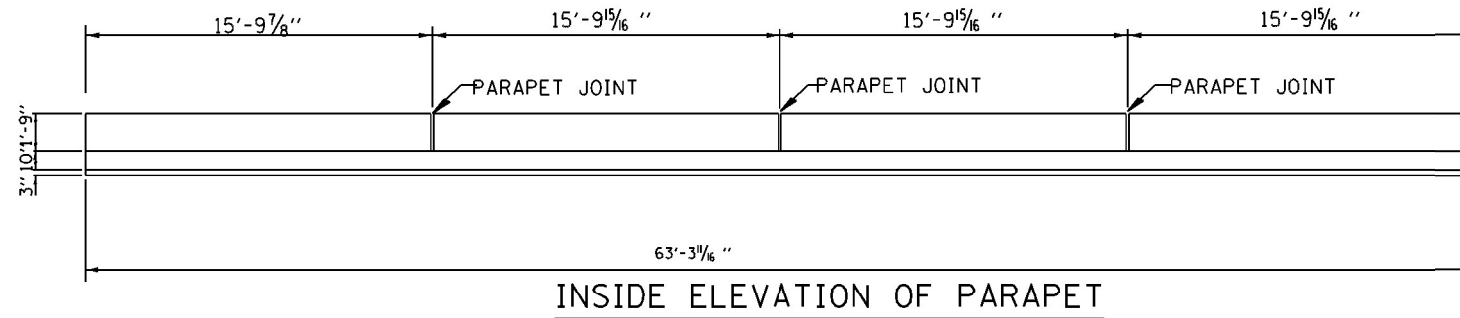
SUMMARY OF QUANTITIES			TOTAL QUANTITIES	CONSTRUCTION TYPE CODE 0013				
CODE NO	ITEM	UNIT		URBAN 80% FED 20% STATE 0013				
Z0016002	DECK SLAB REPAIR (FULL DEPTH, TYPE II)	SO YD	4	4				
Z0030850	TEMPORARY INFORMATION SIGNING	SO FT	102.8	102.8				
Z0041895	POLYMER CONCRETE	CU FT	4.6	4.6				
58700300	CONCRETE SEALER	SO FT	507	507				

REV-SEP

**GENERAL BRIDGE NOTES:**

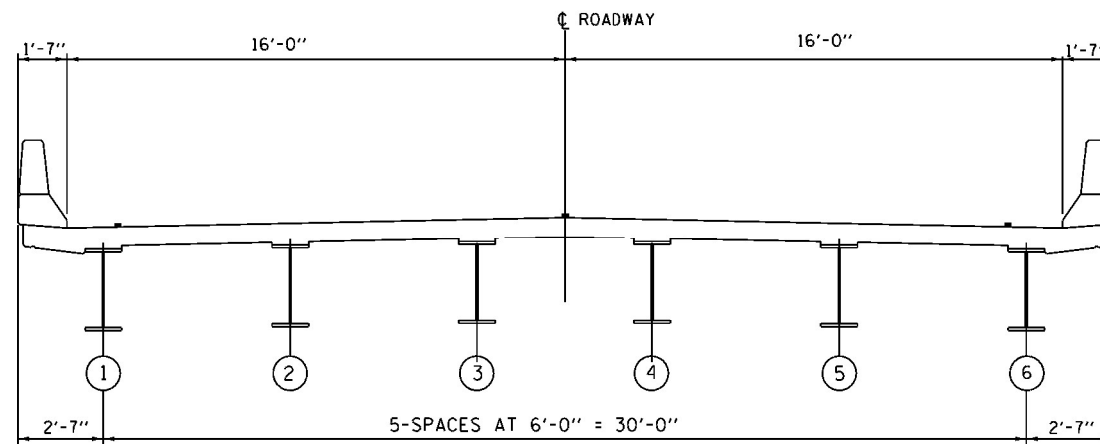
PLAN DIMENSIONS AND DETAILS RELATIVE TO EXISTING PLANS ARE SUBJECT TO ROUTING VARIATIONS. THE CONTRACTOR SHALL FIELD VERIFY EXISTING DIMENSIONS AND DETAILS EFFECTING NEW CONSTRUCTION AND MAKE NECESSARY APPROVED ADJUSTMENT PRIOR TO CONSTRUCTION OR ORDERING OF MATERIALS. SUCH VARIATIONS SHALL NOT BE A CAUSE FOR ADDITIONAL COMPENSATION FOR A CHANGE IN SCOPE OF THE WORK, HOWEVER, THE CONTRACTOR WILL BE PAID FOR THE QUANTITY ACTUALLY FURNISHED BASED UPON THE UNIT PRICE BID FOR THE WORK.

REINFORCEMENT BARS DESIGNATED (E) SHALL BE EPOXY COATED



**TOTAL - BILL OF MATERIALS**

ITEM	UNIT	QUANTITY
BRIDGE DECK SCARIFICATION 3/4"	SO.YD	225
PROTECTIVE COAT	SO.YD	225
BRIDGE DECK LATEX CONCRETE OVERLAY 2 1/4"	SO.YD	225
BRIDGE DECK GROOVING	SO.YD	211
CLEAN AND RESEAL RELIEF JOINTS	FOOT	75
APPROACH SLAB REPAIR (PARTIAL DEPTH)	SO.YD	5
DECK SLAB REPAIR (FULL DEPTH, TYPE II)	SO.YD	4
POLYMER CONCRETE	CU.FT	4.6
CONCRETE SEALER	SO.FT	507



Expires 11-30-2022

*David Carl Puzey*

03/16/2021

M:\REL - Default - 104\puzey\manhattan.road.illinois.gov\PROJECTS\Documents\DOT - Office\District 1\Projects\156020\CADD\Drawings\156020.dwg - 03/16/2021

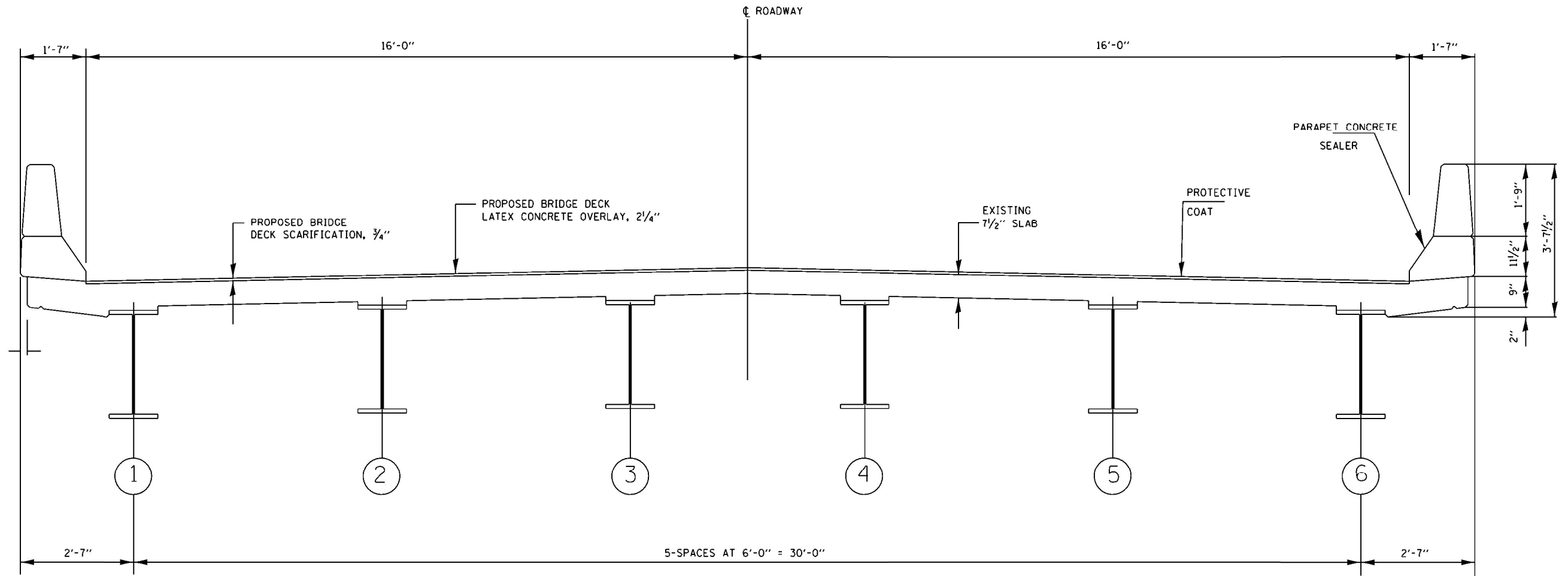
USER NAME = gorengautab	DESIGNED -	REVISED - MVT
	DRAWN -	REVISED - MVT
PLOT SCALE = 100.0000' / in.	CHECKED -	REVISED - MJA
PLOT DATE = 1/7/2021	DATE -	REVISED -

**STATE OF ILLINOIS  
DEPARTMENT OF TRANSPORTATION**

**MONEE MANHATTAN ROAD BRIDGE OVER PRAIRIE CREEK  
PLAN ELEVATION AND CROSS SECTION  
S.N. 099-0310**

SCALE: SHEET OF SHEETS STA. TO STA.

F.P.A. RTE.	SECTION	COUNTY	TOTAL SHEETS	SHEET NO.
531	2020-152-B	WILL	11	4
			CONTRACT NO. 62M27	
		ILLINOIS	FED. AID PROJECT	



TYPICAL CROSS SECTION  
(LOOKING EAST)

MODEL: Default  
 FILE: Monee - Proj\IJC\Documents\DOT - Offices\District 1\Projects\ID156020\CADD\Drawings\ID156020.dwg, plot.dgn

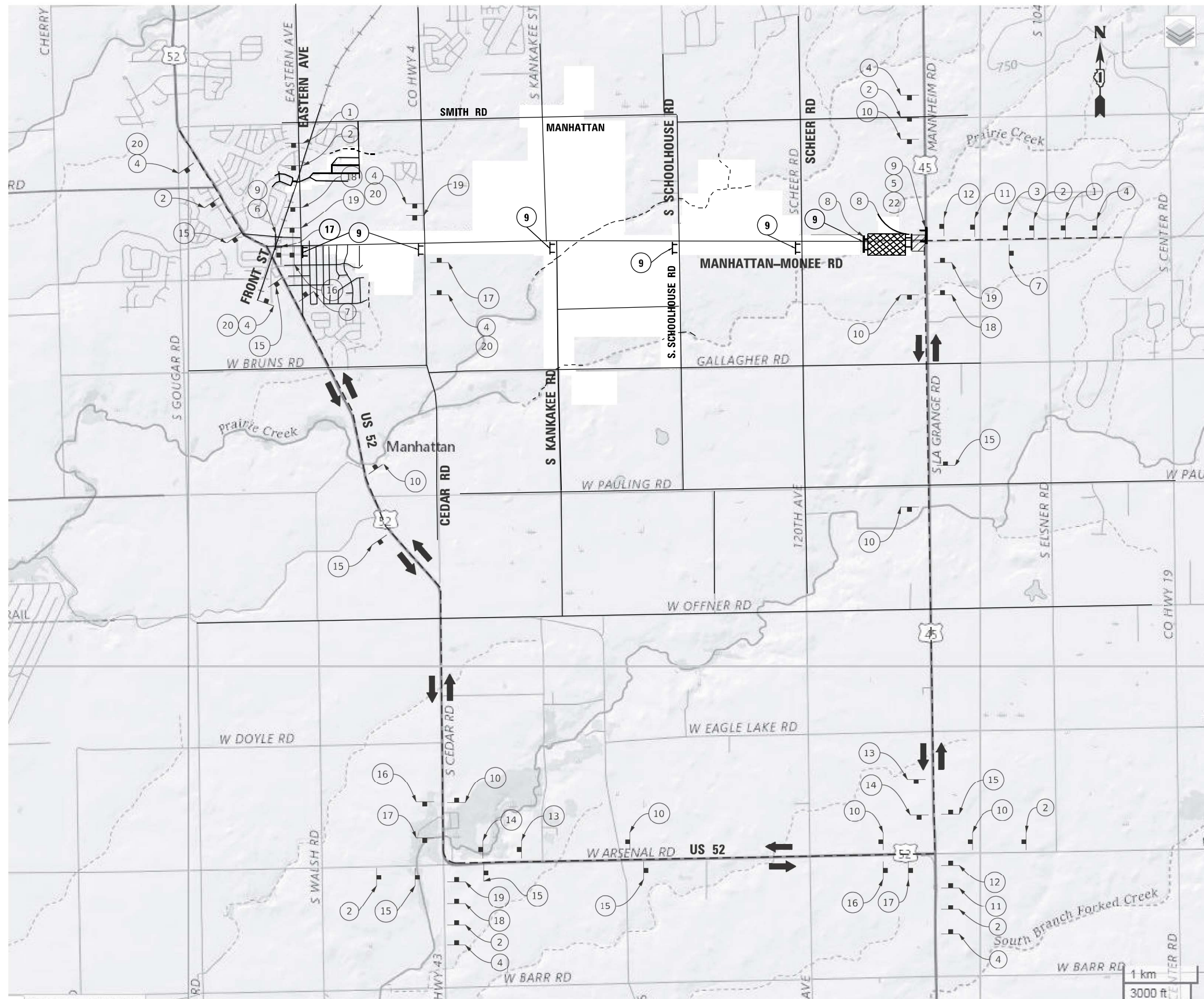
USER NAME = gorengautab	DESIGNED - MVT	REVISED -
	DRAWN - MVT	REVISED -
PLOT SCALE = 100.0000' / in.	CHECKED - MJA	REVISED -
PLOT DATE = 1/7/2021	DATE -	REVISED -

**STATE OF ILLINOIS  
DEPARTMENT OF TRANSPORTATION**

**MONEE MANHATTAN ROAD BRIDGE OVER PRAIRIE CREEK  
TYPICAL CROSS SECTION  
S.N. 099-0310**

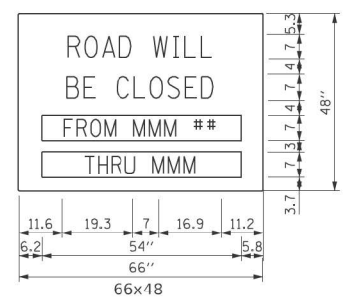
F.P.A. RTE.	SECTION	COUNTY	TOTAL SHEETS	SHEET NO.
531	2020-152-B	WILL	11	5
			CONTRACT NO. 62M27	
SCALE:		SHEET OF SHEETS	STA. TO STA.	ILLINOIS FED. AID PROJECT





**LEGEND:**

- TT TYPE III BARRICADES CONFORMING TO STD. 701901 WITH 2 FLASHING LIGHTS PER BARRICADE
- ▨ PARTIALLY CLOSED ROAD
- ▩ WORK ZONE
- - - DETOUR ROUTE
- ➔ TRAFFIC FLOW
- ☀ TYPE A FLASHING LIGHT



- 1 ROAD CLOSED AHEAD (W20-3-4848)
- 2 DETOUR AHEAD (W20-2-4848)
- 3 ROAD CLOSED 500 FT (W20-3-4848)
- 4 MANHATTAN-MONEE RD CLOSED TO THRU TRAFFIC FOLLOW DETOUR (60x30)
- 5 DETOUR (M4-10L-4818)
- 6 DETOUR (M4-10R-4818)
- 7 END DETOUR (M4-8A-2418)
- 8 ROAD CLOSED (R11-2-4830)
- 9 ROAD CLOSED TO THRU TRAFFIC (R11-4-6030)
- 10 WEST MANHATTAN MONEE RD DETOUR (M3-3-2412, M1-50-3024, M4-9-3024)
- 11 WEST MANHATTAN MONEE RD DETOUR (M3-3-2412, M1-50-3024, M4-9-3024)
- 12 WEST MANHATTAN MONEE RD DETOUR (M3-3-2412, M1-50-3024, M4-9-3024)
- 13 WEST MANHATTAN MONEE RD DETOUR (M3-3-2412, M1-50-3024, M4-9-3024)
- 14 WEST MANHATTAN MONEE RD DETOUR (M3-3-2412, M1-50-3024, M4-9-3024)
- 15 EAST MANHATTAN MONEE RD DETOUR (M3-1-2412, M1-50-3024, M4-9-3024)
- 16 EAST MANHATTAN MONEE RD DETOUR (M3-1-2412, M1-50-3024, M4-9-3024)
- 17 EAST MANHATTAN MONEE RD DETOUR (M3-1-2412, M1-50-3024, M4-9-3024)
- 18 EAST MANHATTAN MONEE RD DETOUR (M3-1-2412, M1-50-3024, M4-9-3024)
- 19 EAST MANHATTAN MONEE RD DETOUR (M3-1-2412, M1-50-3024, M4-9-3024)
- 20 E OF S KANKAKEE ST (60x12)
- 21 ROAD CLOSED 1/2 MILE (W20-3-4848)

\* M1-50-3024 SIGNS SHALL BE CUSTOM NAME SIGN. MIN. 6" BLACK UPPERCASE LETTERS ON ORANGE BACKGROUND OR WHEN LOWER CASE IS USED THEY SHALL BE 3/4 SIZE OF UPPERCASE USED.

NOTE: THE INTENT IS THE CONTRACTOR SHALL COMPLETE THE SITE FIRST AND OPEN IT TO LOCAL TRAFFIC AS SOON AS THE WORK IN THE AREA IS COMPLETE. THE CONTRACTOR SHALL THEN REMOVE ALL CONFLICTING SIGNS AND OPEN THAT AREA TO LOCAL TRAFFIC.

MODEL: Default  
 FILE: M:\GIS\Projects\2020\2020-152-20\2020-152-20\2020-152-20-01.dwg  
 PROJECT: 2020-152-20  
 OFFICE: DISTRICT 1  
 DATE: 12/11/2020

USER NAME = mldjja	DESIGNED -	REVISED -
	DRAWN -	REVISED -
PLOT SCALE = 100,000' / in.	CHECKED -	REVISED -
PLOT DATE = 12/11/2020	DATE -	REVISED -

**STATE OF ILLINOIS  
DEPARTMENT OF TRANSPORTATION**

**MONEE MANHATTAN ROAD BRIDGE OVER PRAIRIE CREEK  
DETOUR PLAN**

SCALE: SHEET OF SHEETS STA. TO STA.

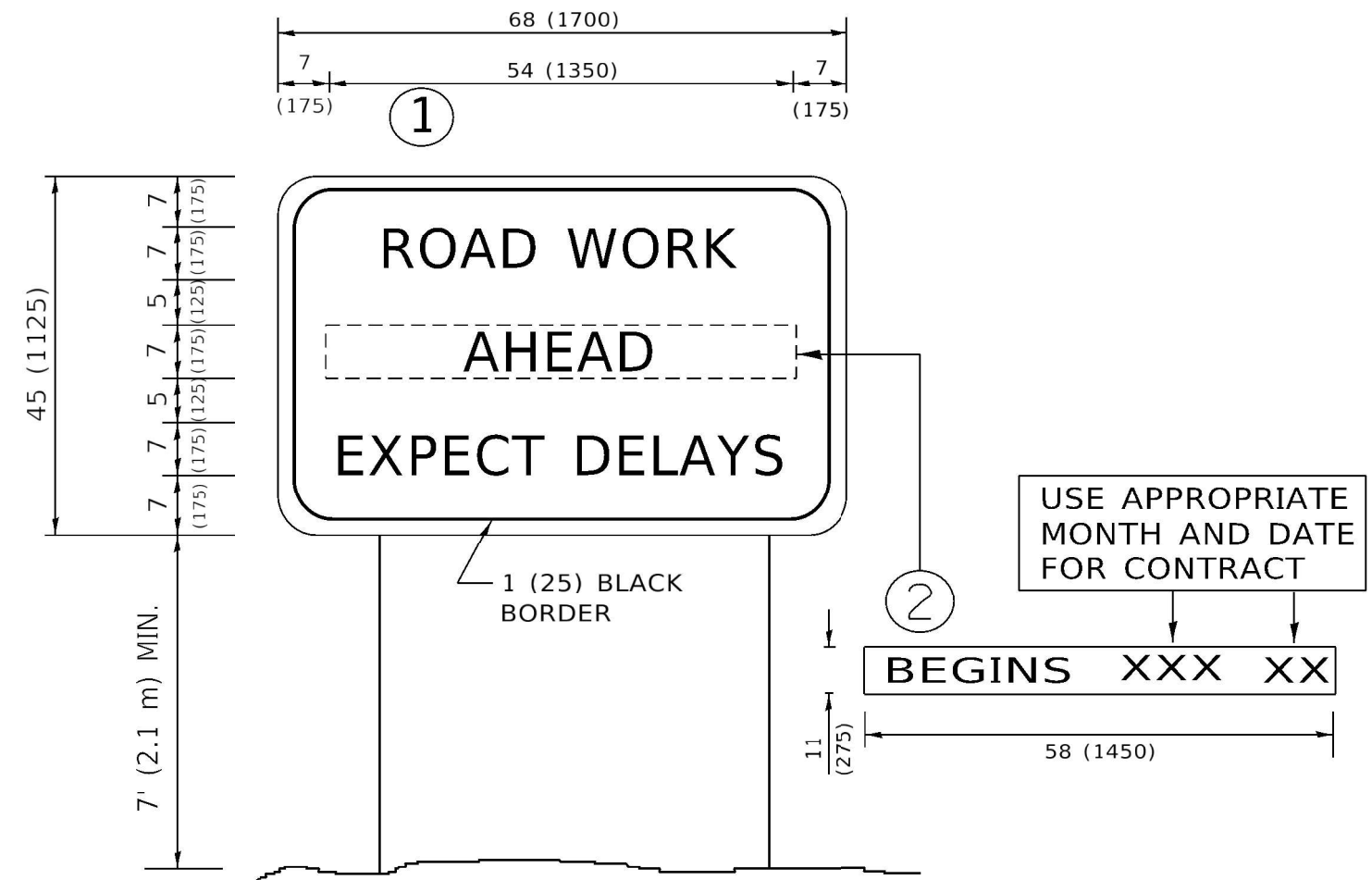
F.A.P. RTE.	SECTION	COUNTY	TOTAL SHEETS	SHEET NO.
351	2020-152-BR	WILL	11	7
CONTRACT NO. 62M27				
ILLINOIS FED. AID PROJECT				











**NOTES:**

1. USE BLACK LETTERING ON ORANGE BACKGROUND.
2. ERECT SIGNS IN ADVANCE OF THE LOCATION FOR THE "ROAD CONSTRUCTION AHEAD" SIGN AT LOCATIONS AS DIRECTED BY THE ENGINEER.
3. ERECT SIGN ① WITH INSTALLED PANEL ② ONE WEEK PRIOR TO THE START OF CONSTRUCTION.
4. REMOVE PANEL ② SOON AFTER THE START OF CONSTRUCTION.
5. SEE SPECIAL PROVISION FOR "TEMPORARY INFORMATION SIGNING" FOR ADDITIONAL INFORMATION.
6. ONE SIGN ASSEMBLY EQUALS 25.70 SQ. FT. (2.3 SQ. M.)
7. SHALL BE PAID FOR AS TEMPORARY INFORMATION SIGNING.

ALL DIMENSIONS ARE IN INCHES (MILLIMETERS) UNLESS OTHERWISE SHOWN.

MODEL: Default  
 FILE: Model - 10000000.dwg  
 PROJECT: P:\PROJECTS\2020\2020-152\BR\2020-152-01\2020-152-01.dwg  
 USER: gorenautab

USER NAME = gorenautab	DESIGNED -	REVISED - R. MIRS 09-15-97
	DRAWN -	REVISED - R. MIRS 12-11-97
PLOT SCALE = 100.0000" / in.	CHECKED -	REVISED - T. RAMMACHER 02-02-99
PLOT DATE = 12/1/2020	DATE -	REVISED - C. JUCIUS 01-31-07

**STATE OF ILLINOIS  
DEPARTMENT OF TRANSPORTATION**

**ARTERIAL ROAD  
INFORMATION SIGN**

SCALE: NONE SHEET 1 OF 1 SHEETS STA. TO STA.

F.A.P. RTE.	SECTION	COUNTY	TOTAL SHEETS	SHEET NO.
531	2020-152-BR	WILL	11	11
<b>TC-22</b>			CONTRACT NO. 62M27	
ILLINOIS FED. AID PROJECT				