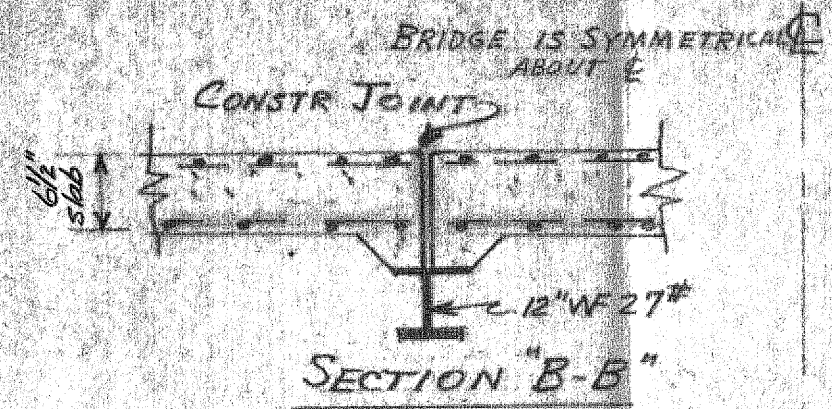
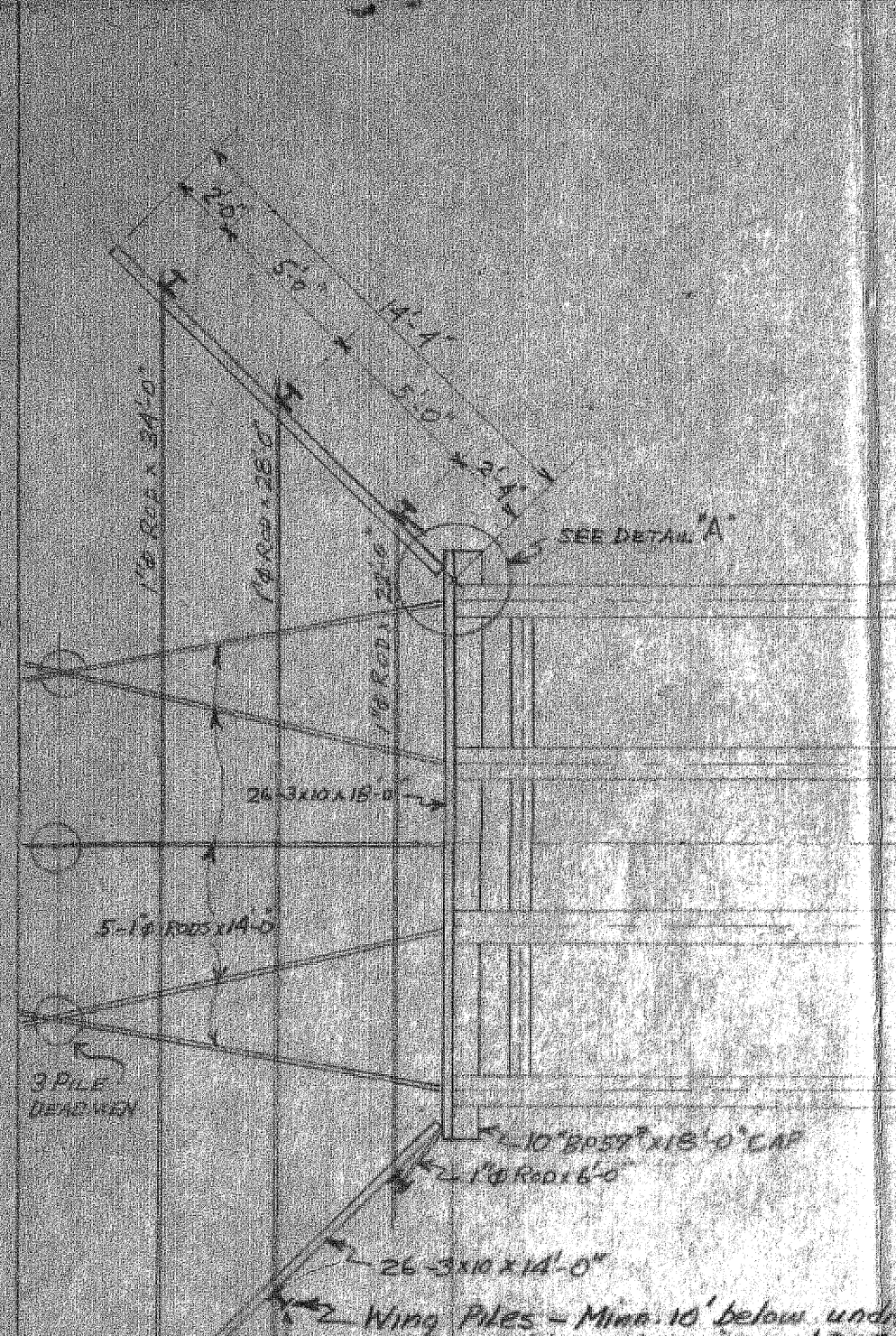
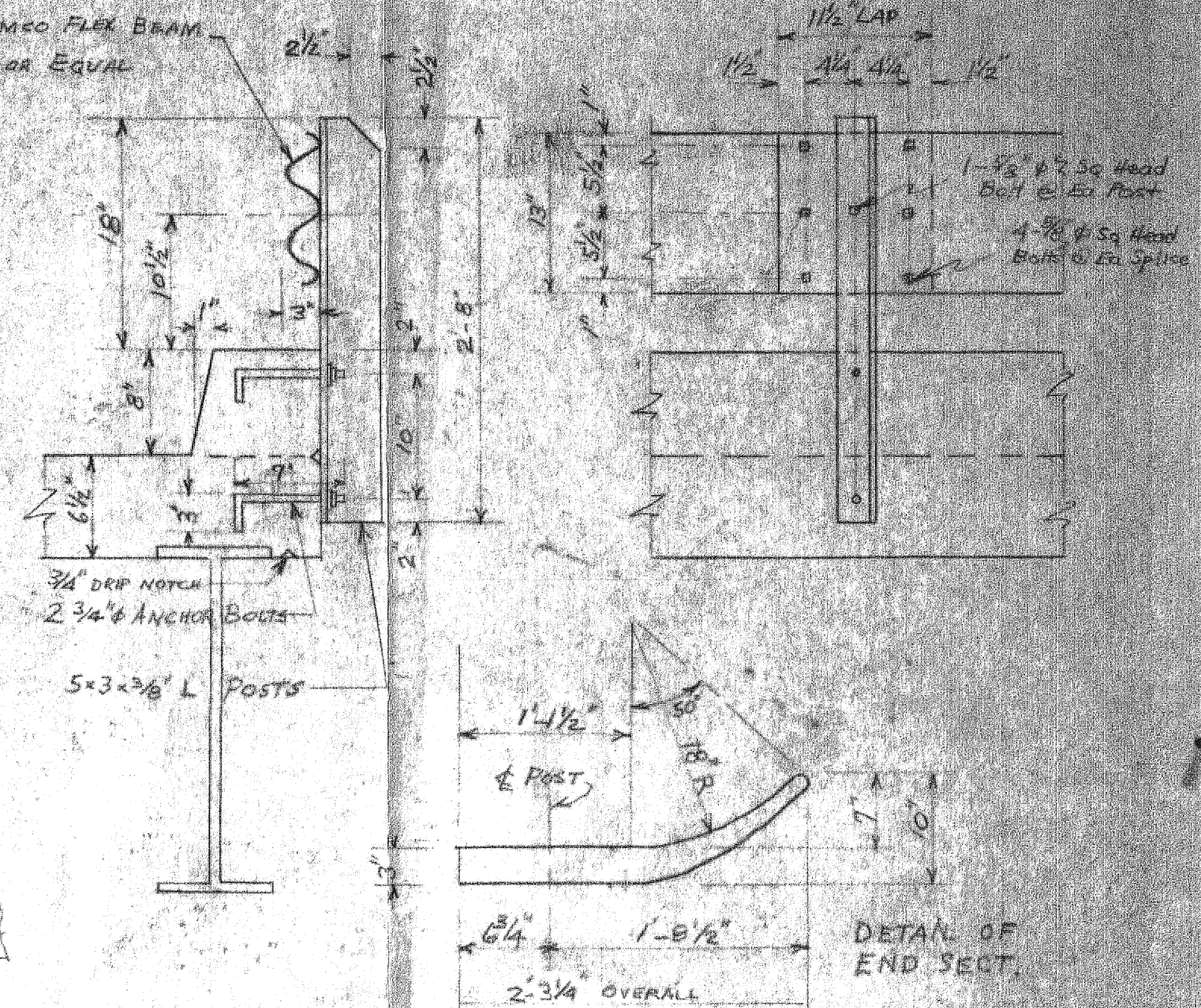
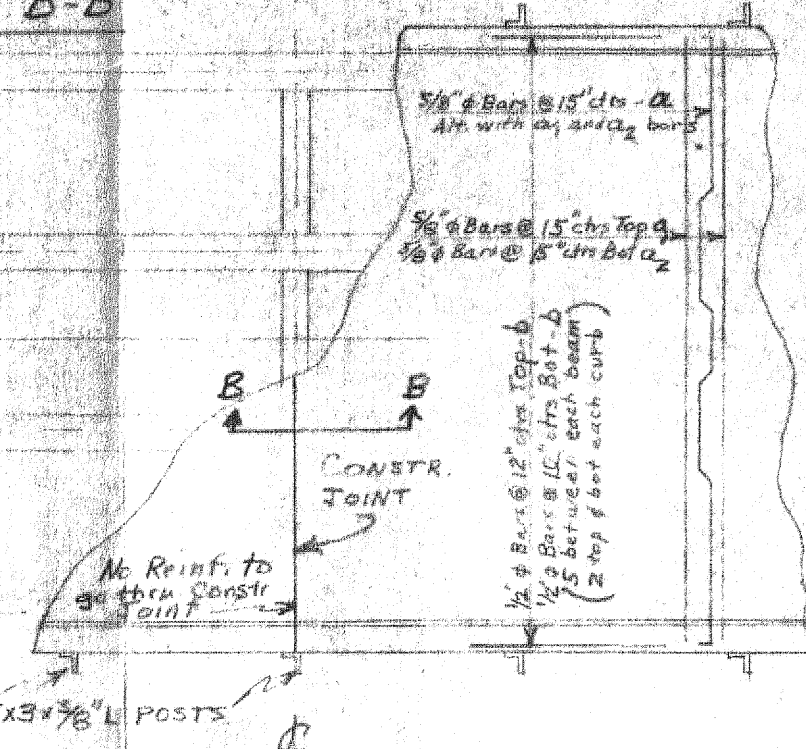


REINFORCING				
BAR	No	SIZE	LENGTH	SHAPE
a	81	#5	18'-11"	
a ₁	80	#5	17'-0"	
a ₂	80	#5	18'-10"	
b	164	#4	26'-6"	
d	200	#4	1'-0"	



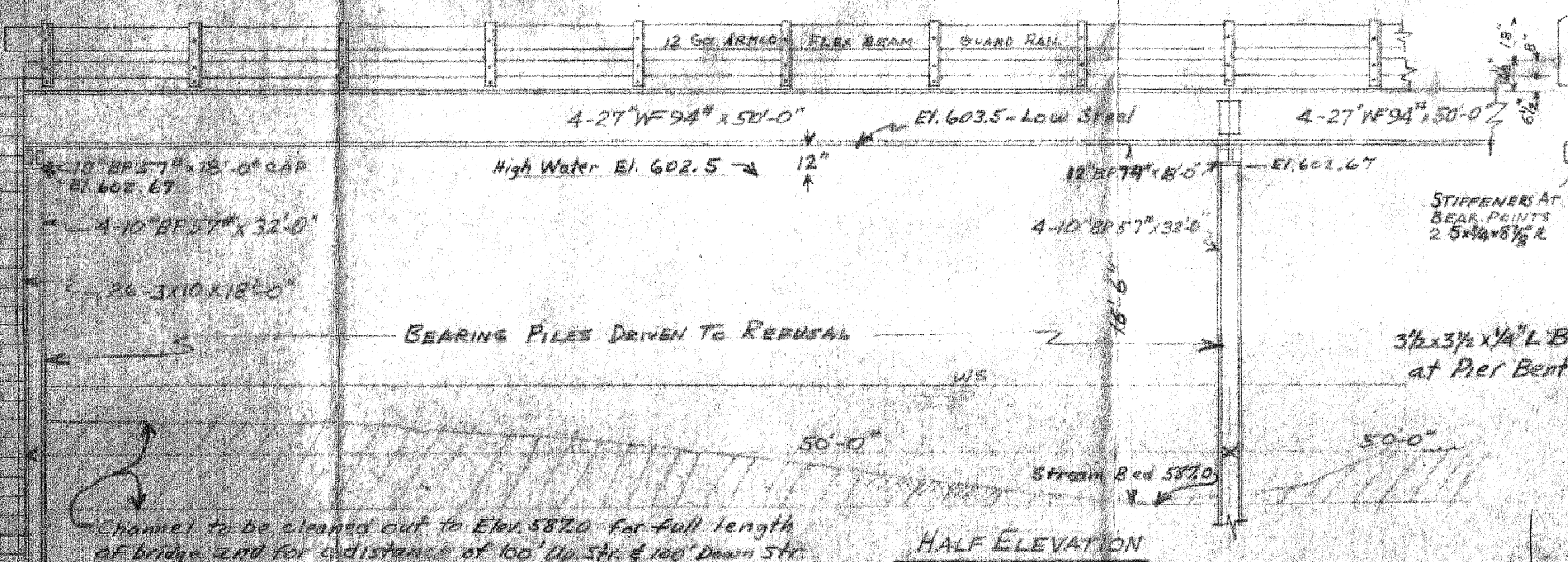
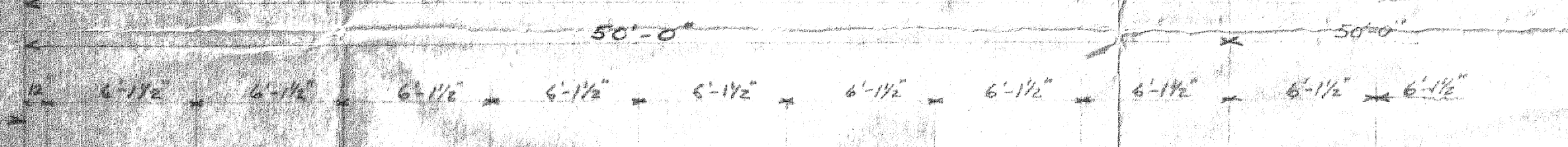
HALF PLAN



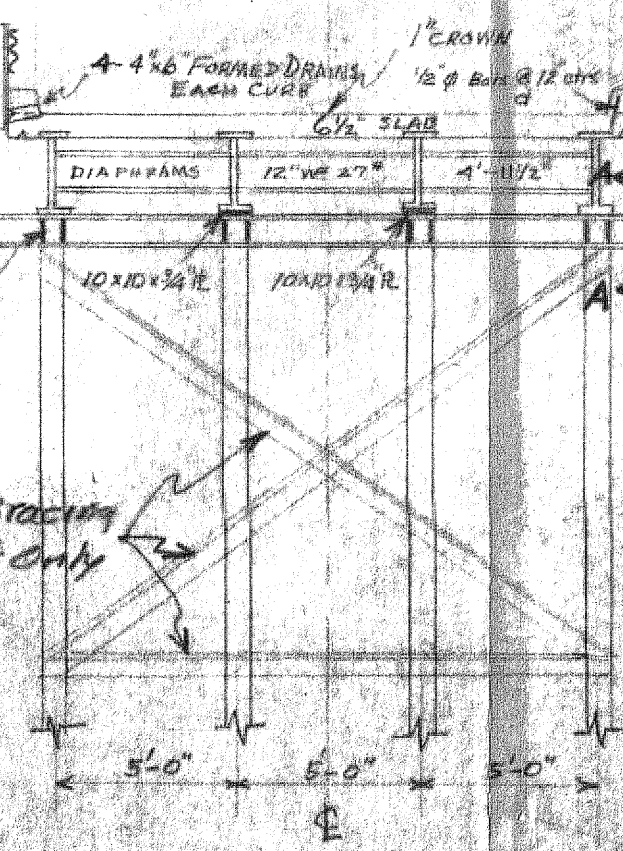
RAIL AND POST DETAILS

BILL OF MATERIAL	
12-8" BP 36" x 32-0"	768 LF
12-10" BP 57" x 32-0"	
4-4x6 x 17-0"	
52-3/4" x 18-0"	6116 LF
10-2x10 x 14-0"	
3-10" BP 57" x 18-0"	
8-27" W 94" x 50-0"	43,825
21-12" W 27" x 14-1/2"	
24-7/8" x 9" R	
6-3/4" x 10" x 10" R	
BEAM CLIP TIE ROD, ETC	1037.6
REINFORCING	8396
CONC FLOOR	1732 SF
ARMO HANDRAIL	2028 LF

SECTION A-A



HALF ELEVATION

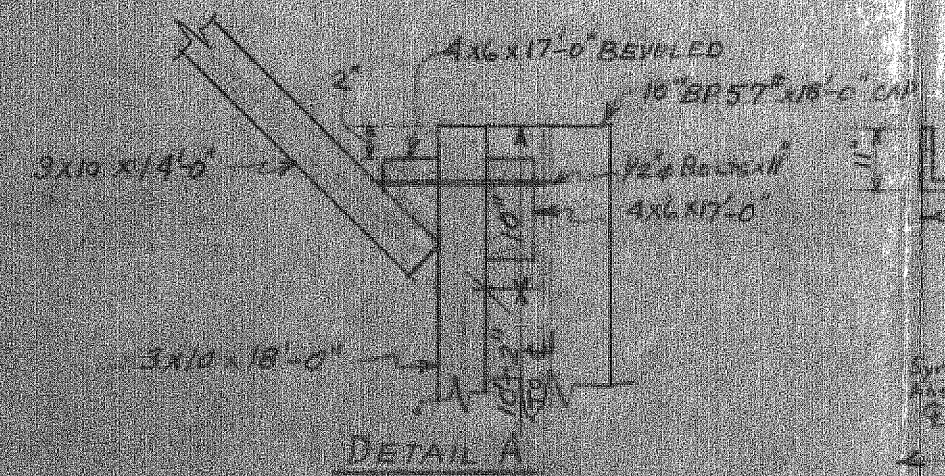


SECTION THRU ABUTMENT

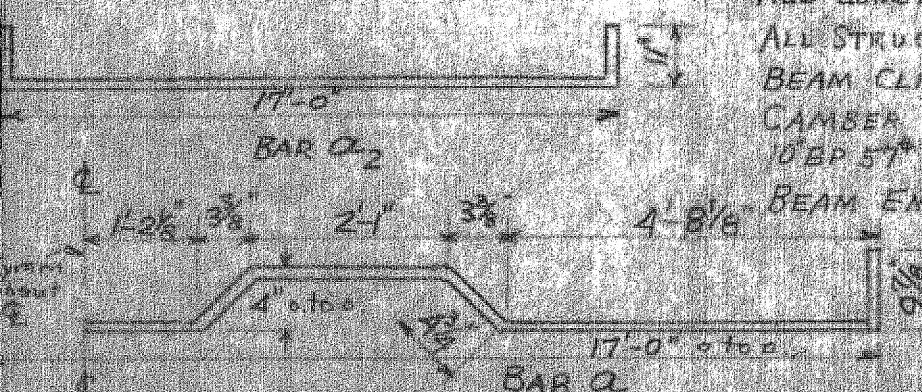
Channel to be cleaned out to Elev. 5820 for full length of bridge and for a distance of 100' Up Str. & 100' Down Str. Excavated Material to be placed in Approach Fills according to Art. 50.10 Stand Spec. 1-2-32.

NOTES

- ALL LUMBER TO BE CREOSOTED WITH 10% PRESSURE
- ALL STRUCTURAL STEEL CONNECTIONS TO BE WELDED
- BEAM CLIPS TO BE USED TO HOLD ABUT. PLANKING TO H PILES
- CAMBER TO BE BUILT IN OVERHANG OF CONC DECK ONLY
- 10" BP 57" CAPS TO HAVE DIAPHRAGMS WELDED BETWEEN FLANGES AT BEARING POINTS
- BEAM ENDS TO HAVE STRUTS WELDED TO NAIL PLANKING
- WATERWAY OPENING = 1511.59 FT.



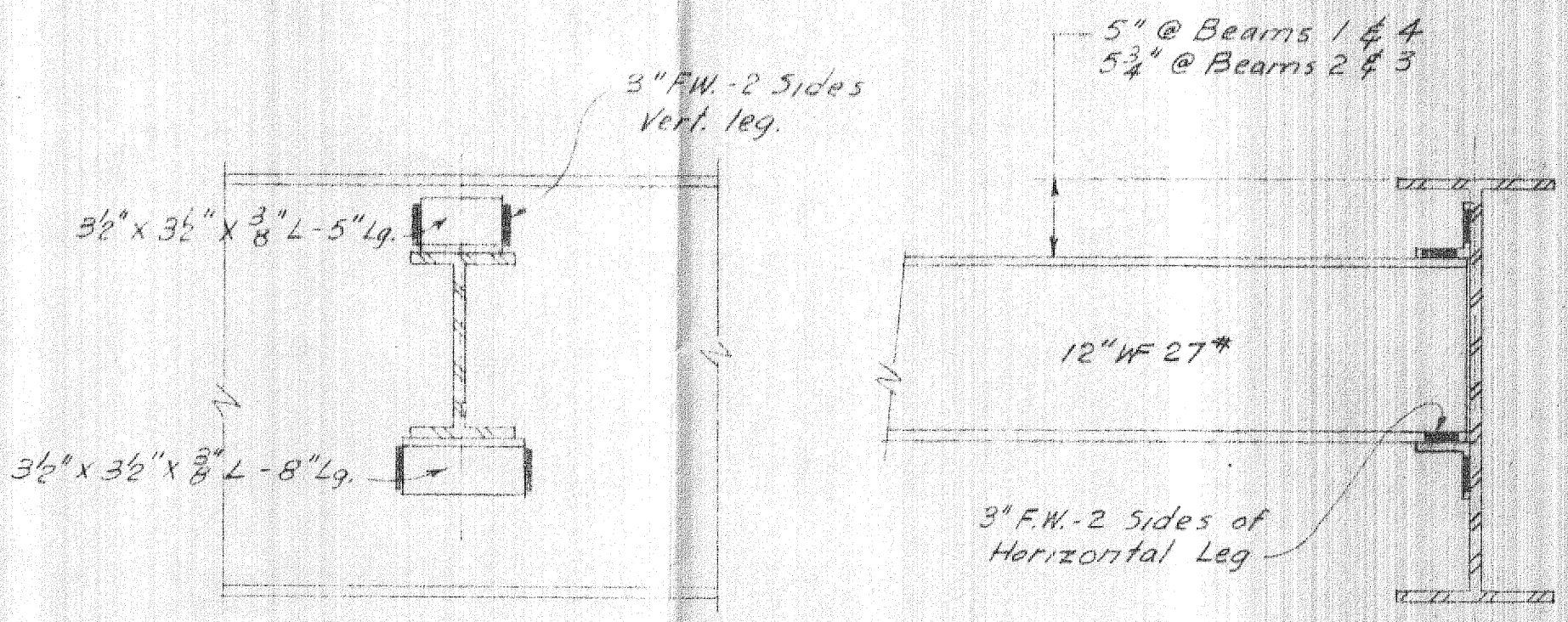
DETAIL A



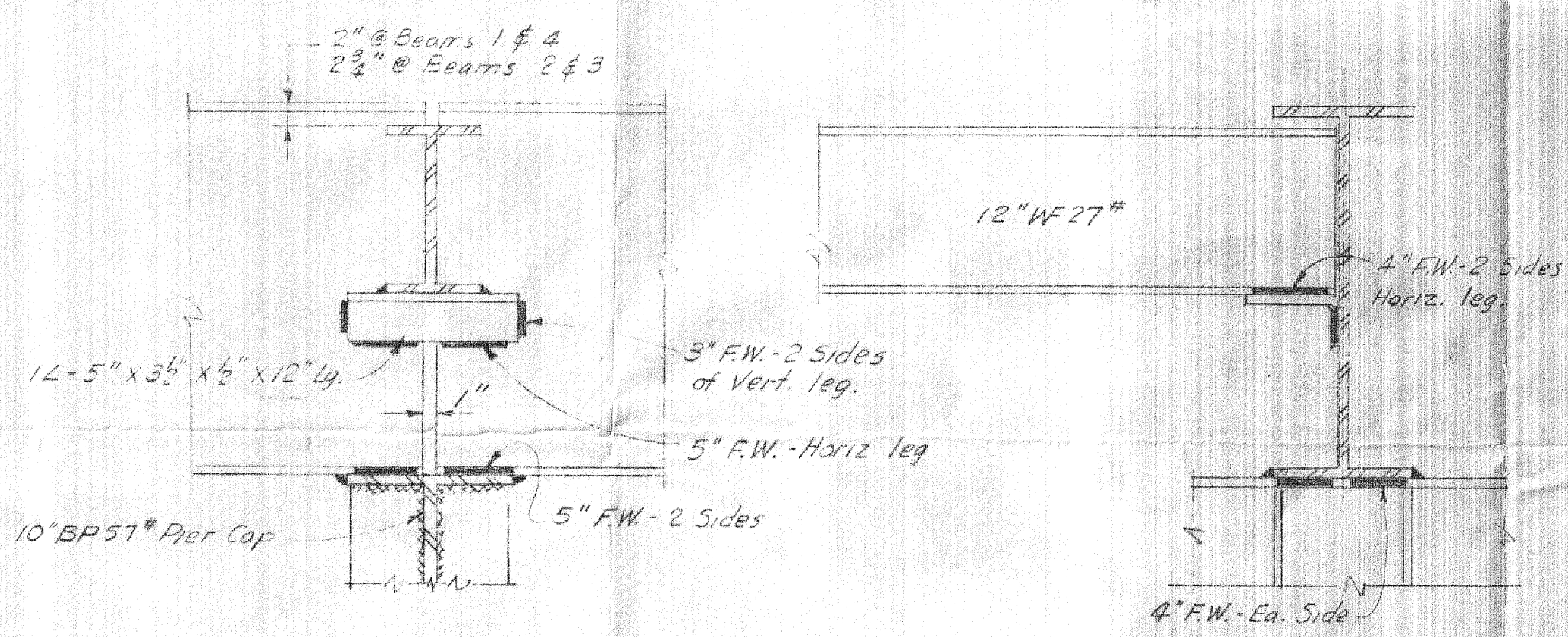
JO DAVIESS COUNTY HIGHWAY DEPT.
GALENA, ILL.
Twp Road 100 FT. SPAN over Apple River
MILLER BRIDGE
SW 1/4 of SE 1/4 Sec 4 T 37N R 12E of the 4th PM
WOODRINE TOWNSHIP
JO DAVIESS COUNTY

DATE 2-6-53
DRAWN W.A.S.
SCALE 3/16" = 1'-0"
H-15 LOADINGS
REVISED 3-17-53

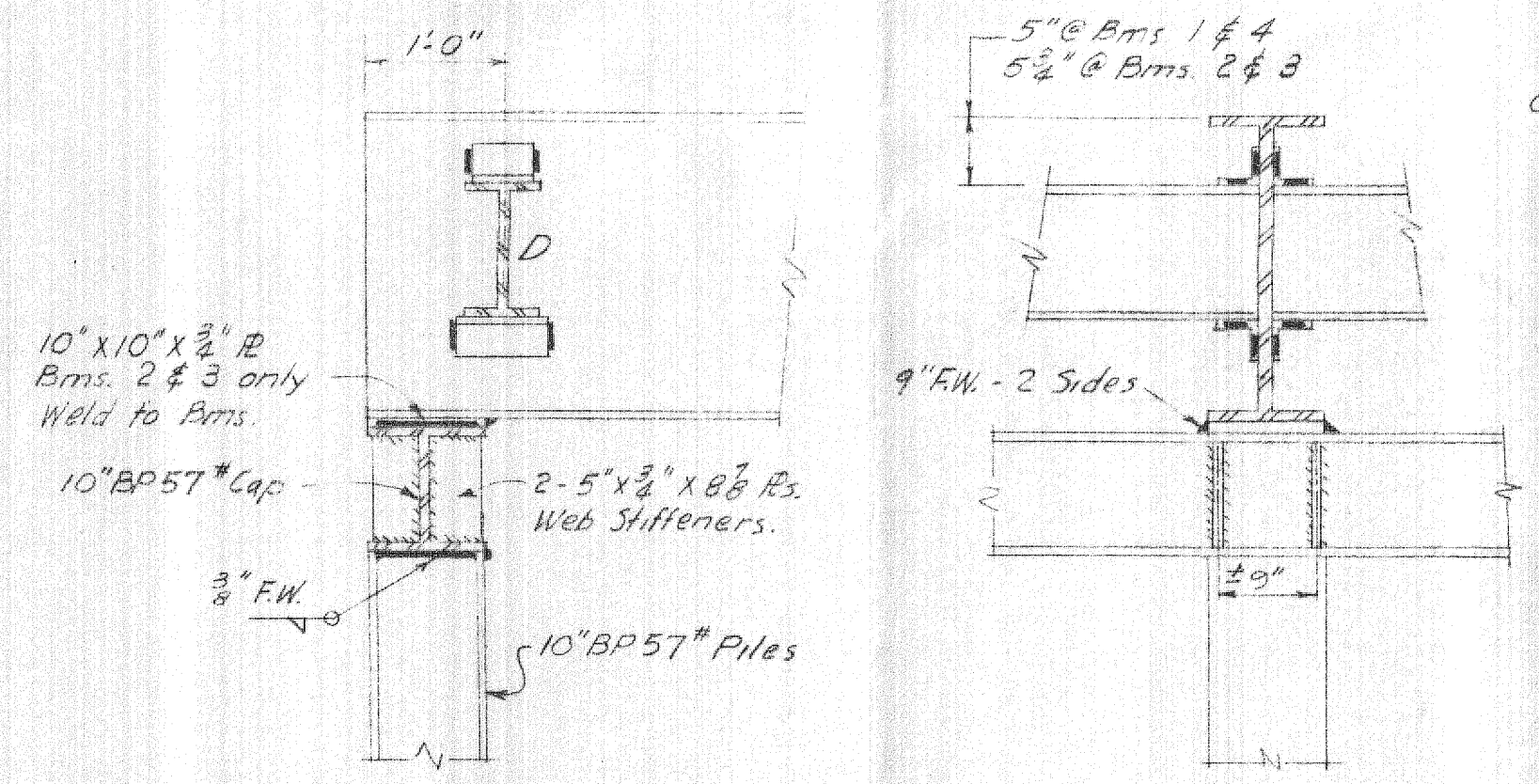
10'
47"
3'-7"
3'-58"
02.67
6'-5"
28'-2 1/2"
100'
26'
14'-0"
20.7'



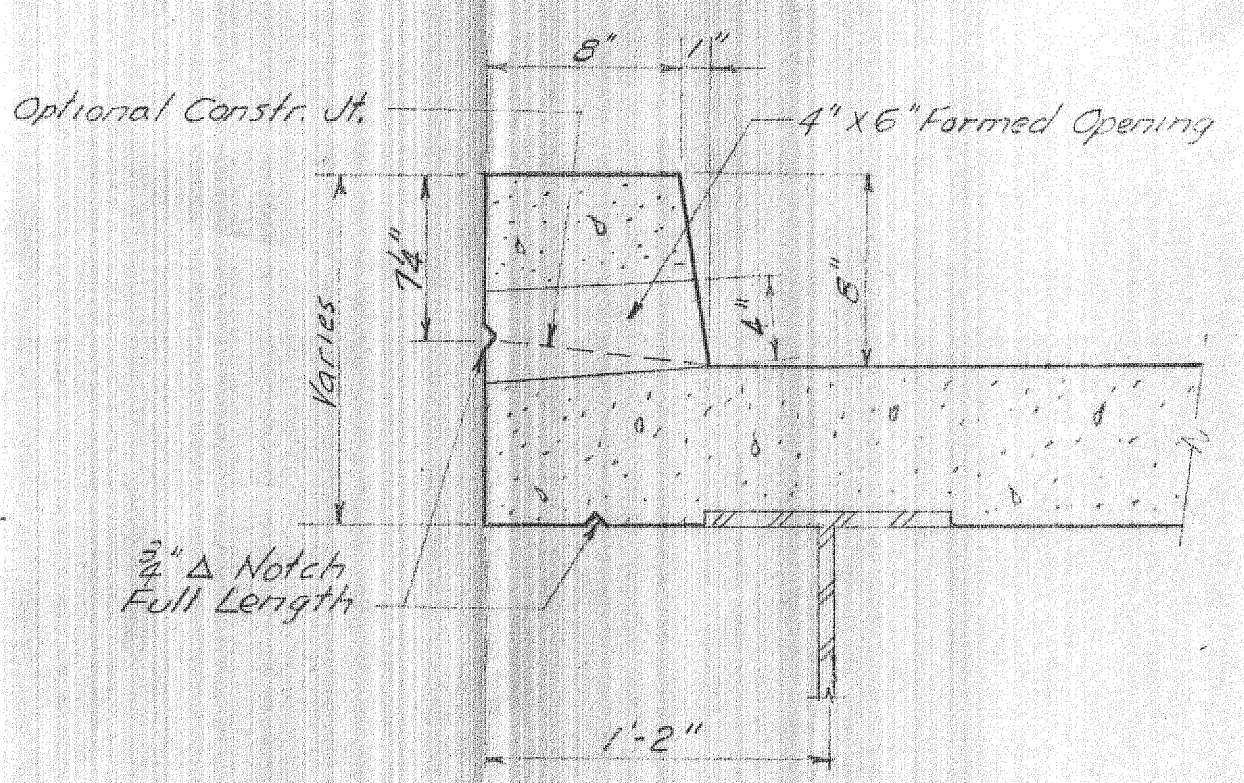
DIAPHRAGM D
18 Req'd.



DIAPHRAGM D1 @ PIER
3 Req'd.



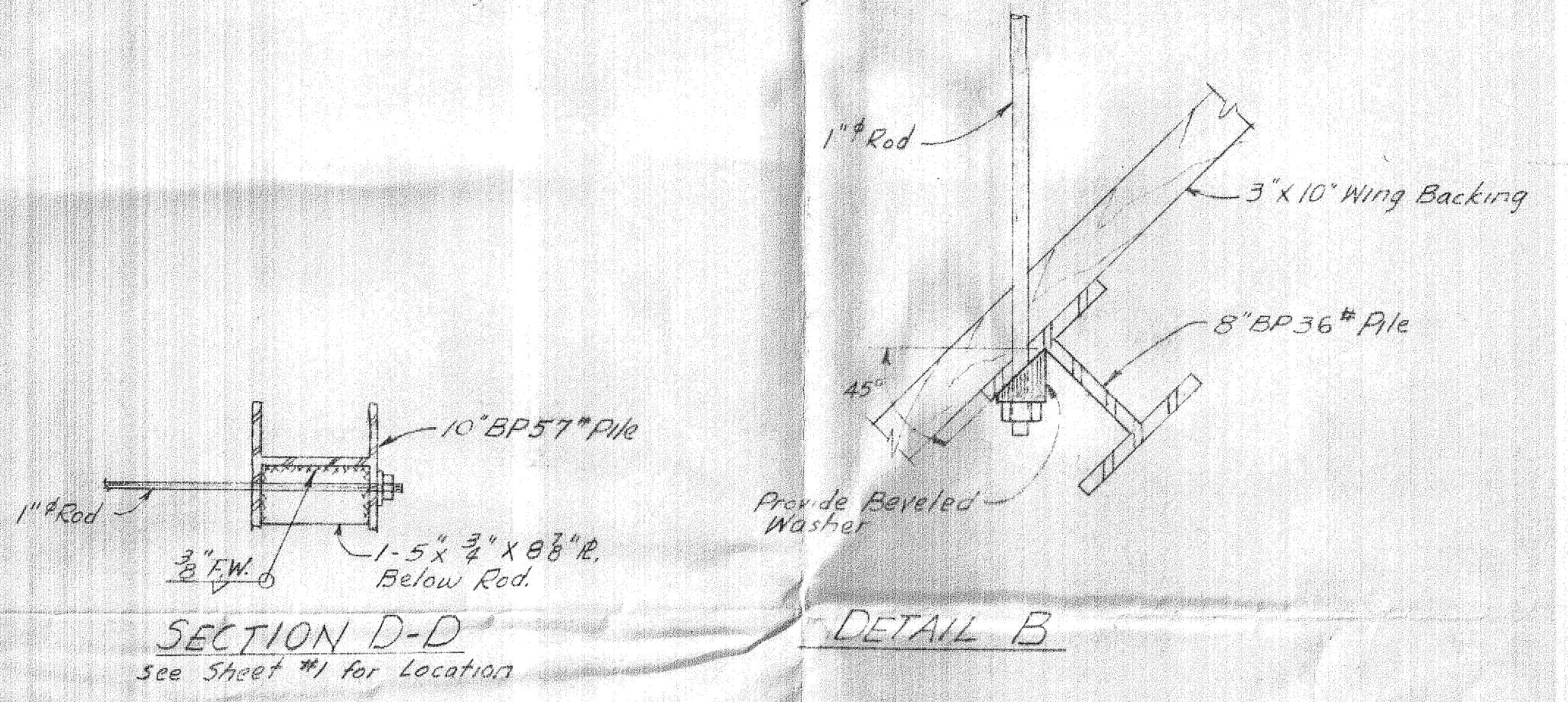
SECTION @ ABUTMENTS



DETAIL OF FLOOR DRAIN & CURB

GENERAL NOTES

Class X Concrete shall be used thruout.
 Concrete floor slab shall be finished in accordance with Art. 51.18a of the Std. Spec's. and shall be poured in one continuous operation, except as noted.
 All timber and hardware shall be furnished and installed in accordance with Section 58 of the Std. Spec's.
 All Structural Steel connections shall be welded, except as noted. Welding shall comply with Article 55.8(m) of the Std. Spec's.
 All welds shall be $\frac{3}{8}"$ Fillet welds unless otherwise noted.
 Structural Steel shall receive one coat of red lead paint and two coats of aluminum paint. All paint to be furnished by the Contractor.
 Metal Plate bridge rail shall receive one coat of red lead paint and two coats of aluminum paint.
 Handrail shall be paid for per lin. foot "Armco Handrail (or equal)" and shall include all nuts, bolts & washers. Rail posts and anchor bolts are included for payment as Structural Steel.
 Beam clips to be used to hold Abut. planking to steel piles.
 Camber to be built in overhang of Conc deck only.



BILL OF MATERIAL

ITEM	UNITS	QUANTITY
Class X Concrete	Cu. Yds.	40.0
Reinforcement Bar	Lbs.	7740
* Structural Steel	Lbs.	46520
Hardware	Lbs.	1930
Treated Timber	F.B.M.	6478
Armco Handrail (or equal)	Lin. Ft.	200
Steel Piles	Lin. Ft.	768

* Includes Abut. & Pier Cap beams

JO DAVIESS COUNTY HIGHWAY DEPT.
 GALENA, ILLINOIS

TWP. ROAD OVER APPLE RIVER
 MILLER BRIDGE
 WOODBINE TOWNSHIP
 JO DAVIESS COUNTY

DATE 5-4-53 REVISIONS _____
 DRAWN JTR _____
 SCALE _____