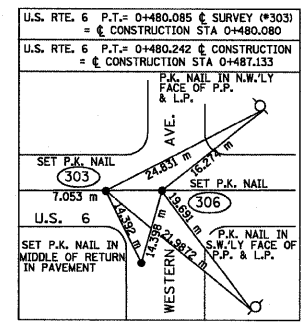
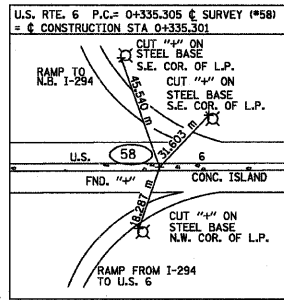
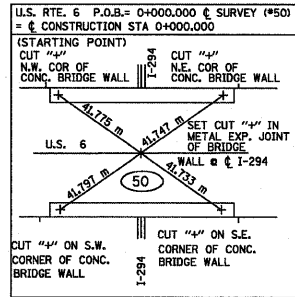
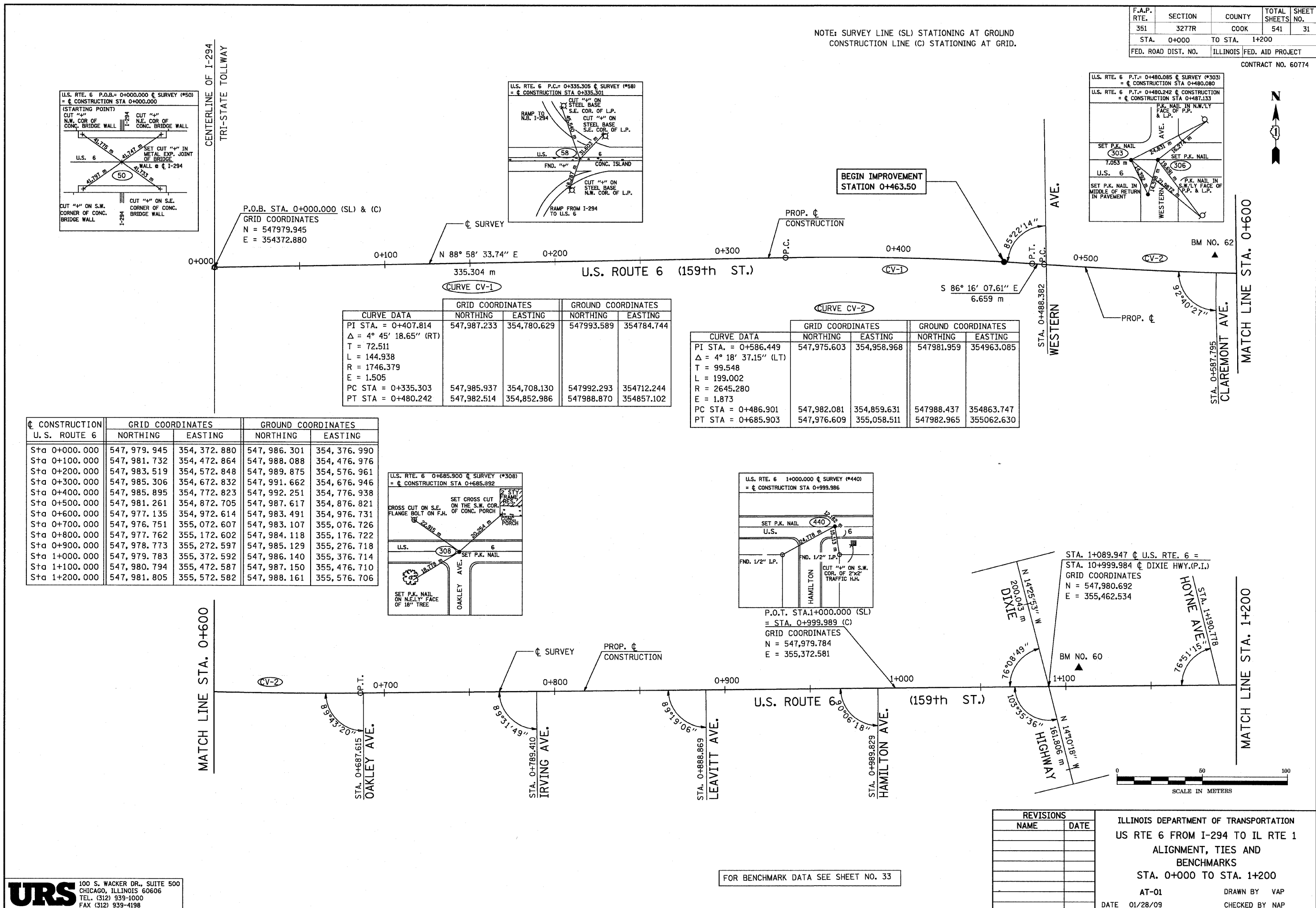


F.A.P. RTE.	SECTION	COUNTY	TOTAL SHEETS	SHEET NO.
351	3277R	COOK	541	31
STA. 0+000		TO STA. 1+200		
FED. ROAD DIST. NO.		ILLINOIS FED. AID PROJECT		

CONTRACT NO. 60774

NOTE: SURVEY LINE (SL) STATIONING AT GROUND  
CONSTRUCTION LINE (C) STATIONING AT GRID.



P.O.B. STA. 0+000.000 (SL) & (C)  
GRID COORDINATES  
N = 547979.945  
E = 354372.880

U.S. ROUTE 6 (159th ST.)

335.304 m

OP.C. CONSTRUCTION

OP.T. P.C.

CV-1

CV-2

85°22'14"

S 86°16'07.61" E  
6.659 m

STA. 0+488.382 WESTERN AVE.

STA. 0+587.795 CLAREMONT AVE.

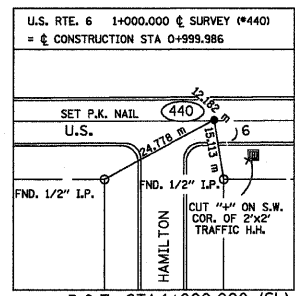
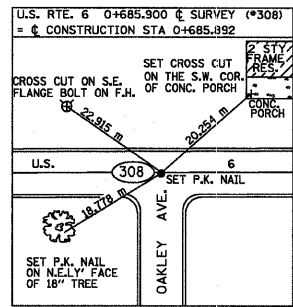
MATCH LINE STA. 0+600

CURVE DATA	GRID COORDINATES		GROUND COORDINATES	
	NORTHING	EASTING	NORTHING	EASTING
PI STA. = 0+407.814	547,987.233	354,780.629	547993.589	354784.744
Δ = 4° 45' 18.65" (RT)				
T = 72.511				
L = 144.938				
R = 1746.379				
E = 1.505				
PC STA = 0+335.303	547,985.937	354,708.130	547992.293	354712.244
PT STA = 0+480.242	547,982.514	354,852.986	547988.870	354857.102

CV-2

CURVE DATA	GRID COORDINATES		GROUND COORDINATES	
	NORTHING	EASTING	NORTHING	EASTING
PI STA. = 0+586.449	547,975.603	354,958.968	547981.959	354963.085
Δ = 4° 18' 37.15" (LT)				
T = 99.548				
L = 199.002				
R = 2645.280				
E = 1.873				
PC STA = 0+486.901	547,982.081	354,859.631	547988.437	354863.747
PT STA = 0+685.903	547,976.609	355,058.511	547982.965	355062.630

CONSTRUCTION U.S. ROUTE 6	GRID COORDINATES		GROUND COORDINATES	
	NORTHING	EASTING	NORTHING	EASTING
Sta 0+000.000	547,979.945	354,372.880	547,986.301	354,376.990
Sta 0+100.000	547,981.732	354,472.864	547,988.088	354,476.976
Sta 0+200.000	547,983.519	354,572.848	547,989.875	354,576.961
Sta 0+300.000	547,985.306	354,672.832	547,991.662	354,676.946
Sta 0+400.000	547,985.895	354,772.823	547,992.251	354,776.938
Sta 0+500.000	547,981.261	354,872.705	547,987.617	354,876.821
Sta 0+600.000	547,977.135	354,972.614	547,983.491	354,976.731
Sta 0+700.000	547,976.751	355,072.607	547,983.107	355,076.726
Sta 0+800.000	547,977.762	355,172.602	547,984.118	355,176.722
Sta 0+900.000	547,978.773	355,272.597	547,985.129	355,276.718
Sta 1+000.000	547,979.783	355,372.592	547,986.140	355,376.714
Sta 1+100.000	547,980.794	355,472.587	547,987.150	355,476.710
Sta 1+200.000	547,981.805	355,572.582	547,988.161	355,576.706



STA. 1+089.947 @ U.S. RTE. 6 =  
STA. 10+999.984 @ DIXIE HWY.(P.I.)  
GRID COORDINATES  
N = 547,980.692  
E = 355,462.534

P.O.T. STA. 1+000.000 (SL)  
= STA. 0+999.989 (C)  
GRID COORDINATES  
N = 547,979.784  
E = 355,372.581

REVISIONS	
NAME	DATE

ILLINOIS DEPARTMENT OF TRANSPORTATION  
US RTE 6 FROM I-294 TO IL RTE 1  
ALIGNMENT, TIES AND  
BENCHMARKS  
STA. 0+000 TO STA. 1+200  
AT-01 DRAWN BY VAP  
DATE 01/28/09 CHECKED BY NAP

FOR BENCHMARK DATA SEE SHEET NO. 33