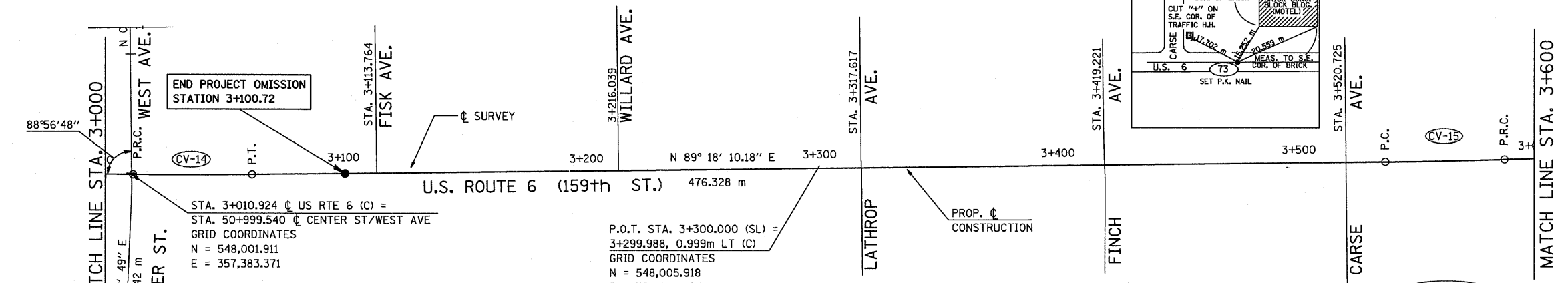


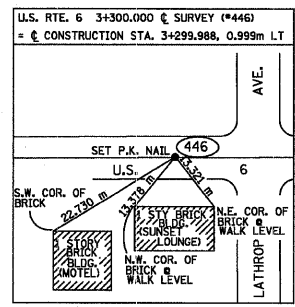
NOTE: SURVEY LINE (SL) STATIONING AT GROUND
CONSTRUCTION LINE (C) STATIONING AT GRID.

F.A.P. RTE.	SECTION	COUNTY	TOTAL SHEETS	SHEET NO.
351	3277R	COOK	541	34
STA. 3+000		TO STA. 4+171.846		
FED. ROAD DIST. NO.		ILLINOIS FED. AID PROJECT		
CONTRACT NO. 60774				



CURVE CV-14

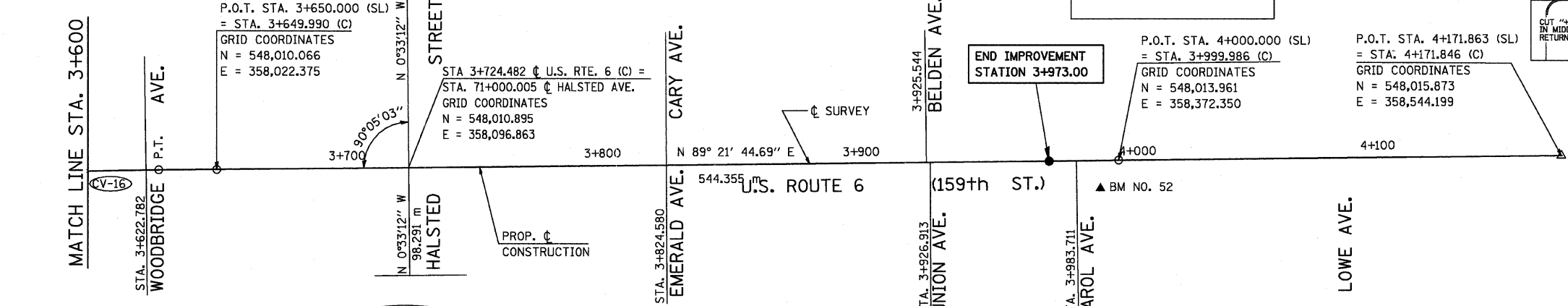
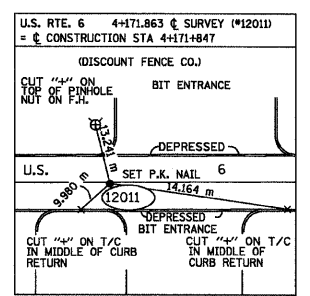
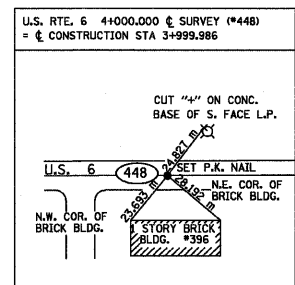
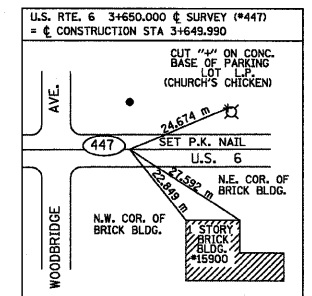
CURVE DATA	GRID COORDINATES		GROUND COORDINATES	
	NORTHING	EASTING	NORTHING	EASTING
PI STA. = 3+036.226	548,001.710	357,408.672	548,008.066	357,412.818
$\Delta = 1^\circ 08' 39.27''$ (LT)				
T = 24.964				
L = 49.927				
R = 2500.000				
E = 0.125				
PRC STA = 3+011.262	548,001.905	357,383.709	548,008.261	357,387.854
PT STA = 3+061.189	548,002.014	357,433.635	548,008.370	357,437.781



CURVE CV-15

CURVE DATA	GRID COORDINATES		GROUND COORDINATES	
	NORTHING	EASTING	NORTHING	EASTING
PI STA. = 3+562.512	548,008.114	357,934.921	548,014.470	357,939.073
$\Delta = 1^\circ 11' 14.94''$ (LT)				
T = 24.995				
L = 49.988				
R = 2411.904				
E = 0.130				
PC STA = 3+537.517	548,007.809	357,909.928	548,014.166	357,914.080
PRC STA = 3+587.505	548,008.936	357,959.902	548,015.292	357,964.054

U.S. ROUTE 6	GRID COORDINATES		GROUND COORDINATES	
	NORTHING	EASTING	NORTHING	EASTING
Sta 3+100.000	548,002.486	357,472.443	548,008.842	357,476.590
Sta 3+200.000	548,003.703	357,572.436	548,010.059	357,576.583
Sta 3+300.000	548,004.919	357,672.428	548,011.276	357,676.577
Sta 3+400.000	548,006.136	357,772.421	548,012.493	357,776.571
Sta 3+500.000	548,007.353	357,872.414	548,013.709	357,876.565
Sta 3+600.000	548,009.304	357,972.392	548,015.661	357,976.544
Sta 3+700.000	548,010.622	358,072.382	548,016.979	358,076.536
Sta 3+800.000	548,011.735	358,172.376	548,018.092	358,176.531
Sta 3+900.000	548,012.848	358,272.370	548,019.205	358,276.526
Sta 4+000.000	548,013.961	358,372.364	548,020.317	358,376.521
Sta 4+100.000	548,015.074	358,472.358	548,021.430	358,476.516



CURVE CV-16

CURVE DATA	GRID COORDINATES		GROUND COORDINATES	
	NORTHING	EASTING	NORTHING	EASTING
PI STA. = 3+607.499	548,009.593	357,979.885	548,015.950	357,984.037
$\Delta = 1^\circ 14' 49.45''$ (RT)				
T = 19.994				
L = 39.986				
R = 1837.124				
E = 0.109				
PRC STA = 3+587.505	548,008.936	357,959.902	548,015.292	357,964.054
PT STA = 3+627.491	548,009.816	357,999.878	548,016.172	358,004.030

REVISIONS	
NAME	DATE

ILLINOIS DEPARTMENT OF TRANSPORTATION
US RTE 6 FROM I-294 TO IL RTE 1
ALIGNMENT, TIES AND
BENCHMARKS
STA. 3+000 TO STA. 4+171.846
AT-04 DRAWN BY VAP
DATE 01/28/09 CHECKED BY NAP

URS
100 S. WACKER DR., SUITE 500
CHICAGO, ILLINOIS 60606
TEL. (312) 939-1000
FAX (312) 939-4198

FOR BENCHMARK DATA SEE SHEET NO. 33

