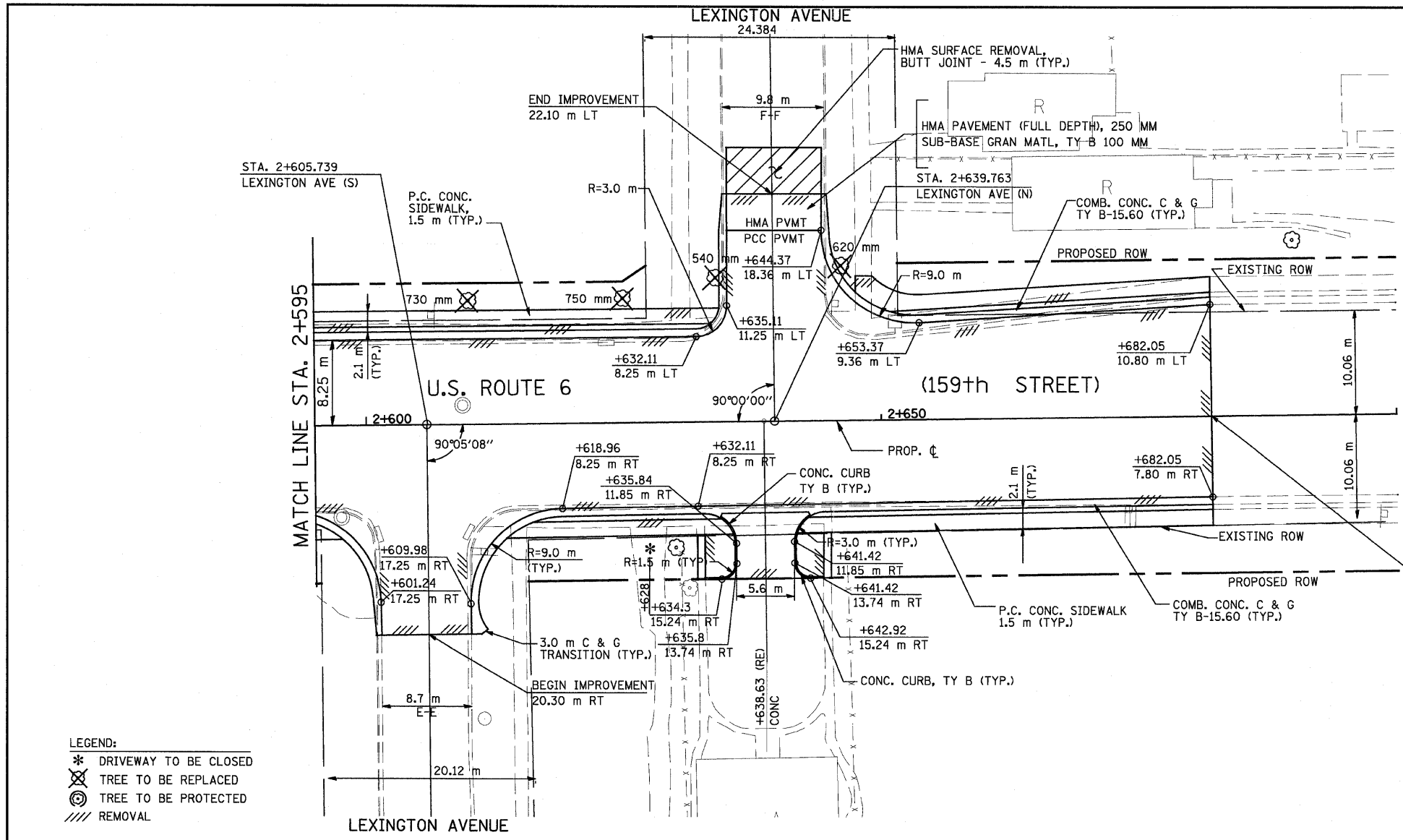


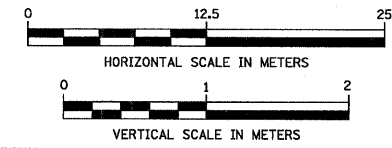
F.A.P. RTE.	SECTION	COUNTY	TOTAL SHEETS	SHEET NO.
351	3277R	COOK	541	90
STA. 2+595		TO STA. 2+700		
FED. ROAD DIST. NO.		ILLINOIS FED. AID PROJECT		
CONTRACT NO. 60774				

BY	DATE
FINAL SURVEY PLOTTED	
NOTE BOOK TEMPLATE	
AREAS CHECKED	
NO.	

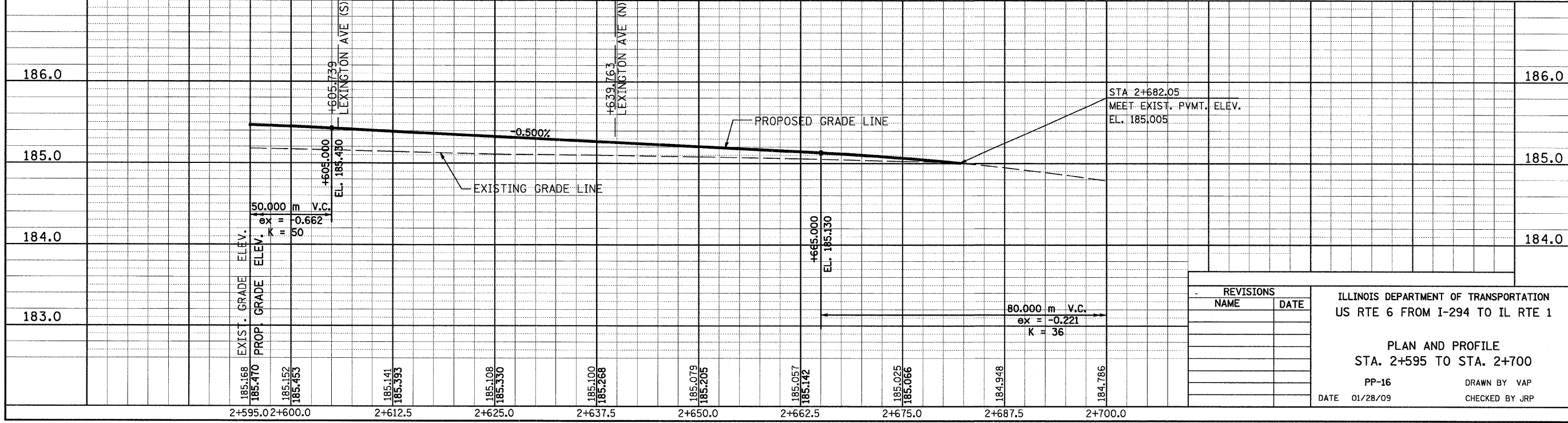


BEGIN OMISSION
STATION 2+682.05
MATCH EXISTING
CONSTRUCTED UNDER
CONTRACT 60E10

- LEGEND:
- * DRIVEWAY TO BE CLOSED
 - ⊗ TREE TO BE REPLACED
 - ⊙ TREE TO BE PROTECTED
 - /// REMOVAL



BY	DATE
ORIGINAL SURVEY PLOTTED	
NOTE BOOK TEMPLATE	
AREAS CHECKED	
NO.	



REVISIONS	
NAME	DATE

ILLINOIS DEPARTMENT OF TRANSPORTATION
US RTE 6 FROM I-294 TO IL RTE 1

PLAN AND PROFILE
STA. 2+595 TO STA. 2+700

PP-16 DRAWN BY VAP
DATE 01/28/09 CHECKED BY JRP