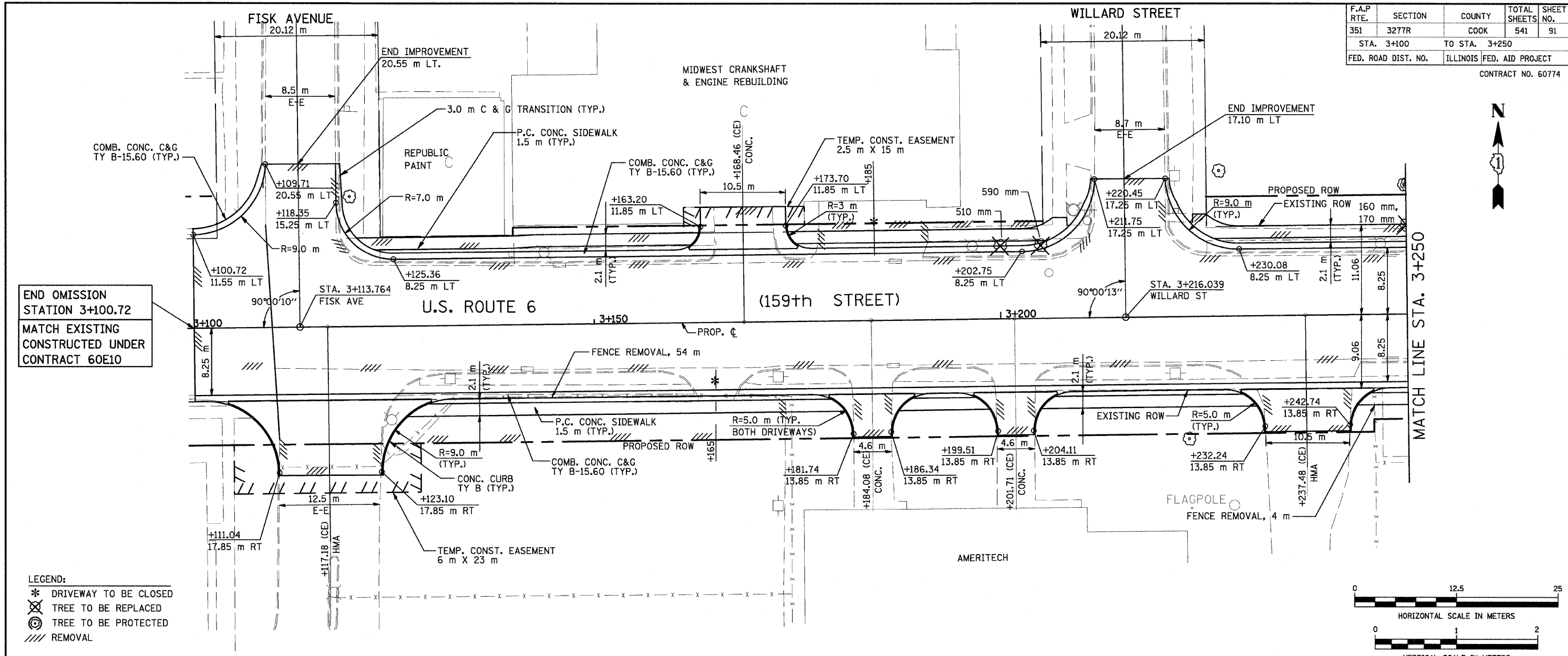


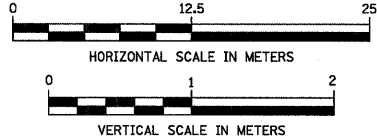
F.A.P. RTE.	SECTION	COUNTY	TOTAL SHEETS	SHEET NO.
351	3277R	COOK	541	91
STA. 3+100		TO STA. 3+250		
FED. ROAD DIST. NO.	ILLINOIS	FED. AID PROJECT		
CONTRACT NO. 60774				

FINAL SURVEY	BY	DATE
SURVEY PLOTTED		
NOTE BOOK TEMPLATE		
AREAS CHECKED		
NO.		

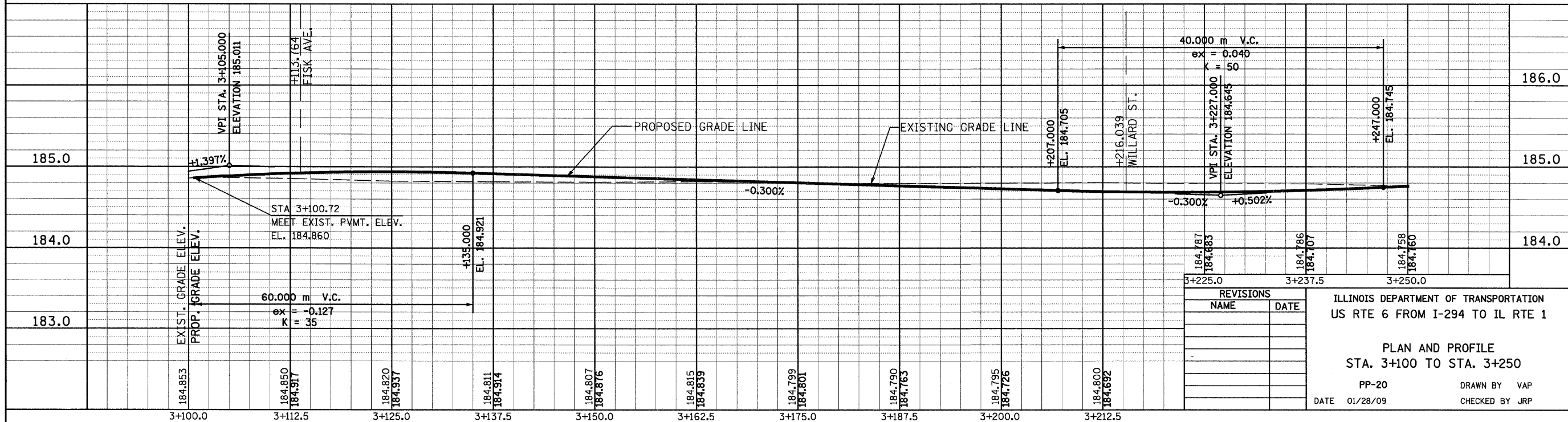


END OMISSION
STATION 3+100.72
MATCH EXISTING
CONSTRUCTED UNDER
CONTRACT 60E10

- LEGEND:
- * DRIVEWAY TO BE CLOSED
 - ⊗ TREE TO BE REPLACED
 - ⊙ TREE TO BE PROTECTED
 - /// REMOVAL



ORIGINAL SURVEY	BY	DATE
SURVEY PLOTTED		
NOTE BOOK TEMPLATE		
AREAS CHECKED		
NO.		



REVISIONS	
NAME	DATE

ILLINOIS DEPARTMENT OF TRANSPORTATION
US RTE 6 FROM I-294 TO IL RTE 1

PLAN AND PROFILE
STA. 3+100 TO STA. 3+250

PP-20 DRAWN BY VAP
DATE 01/28/09 CHECKED BY JRP