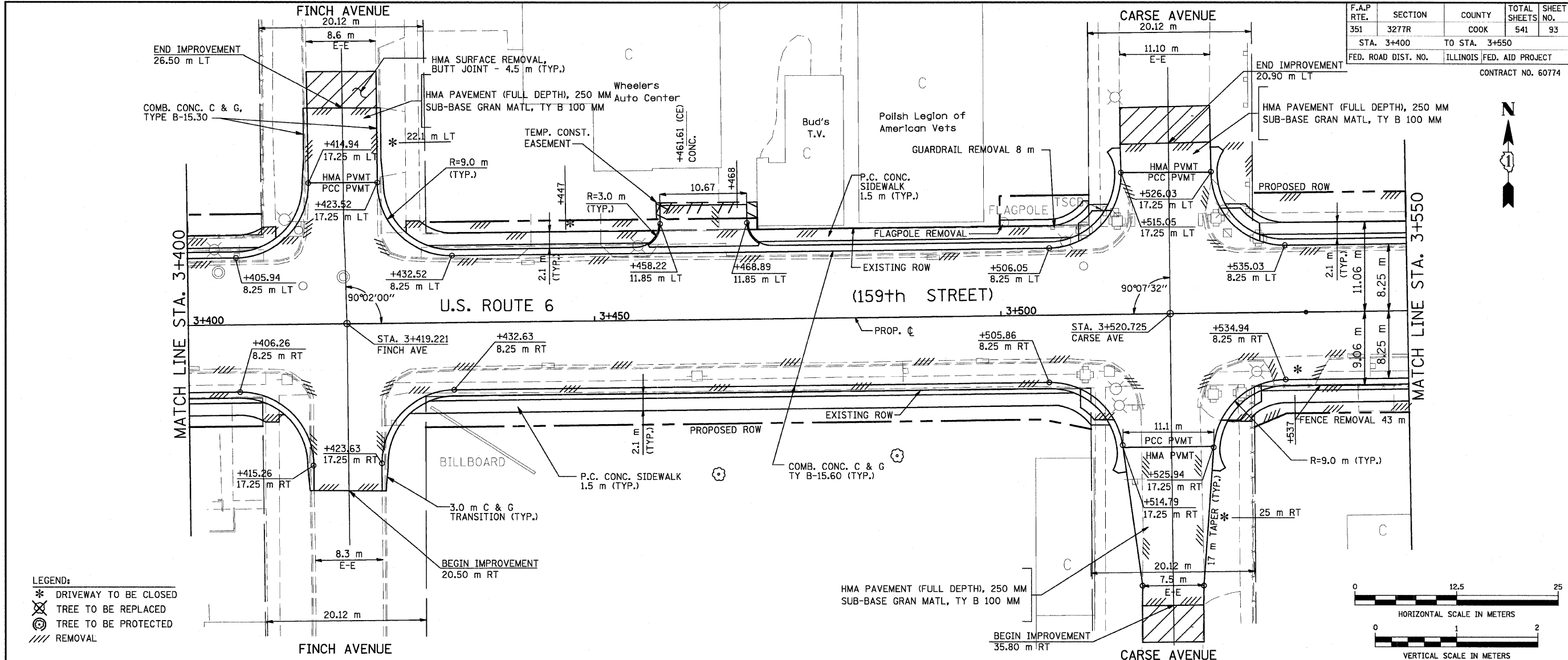


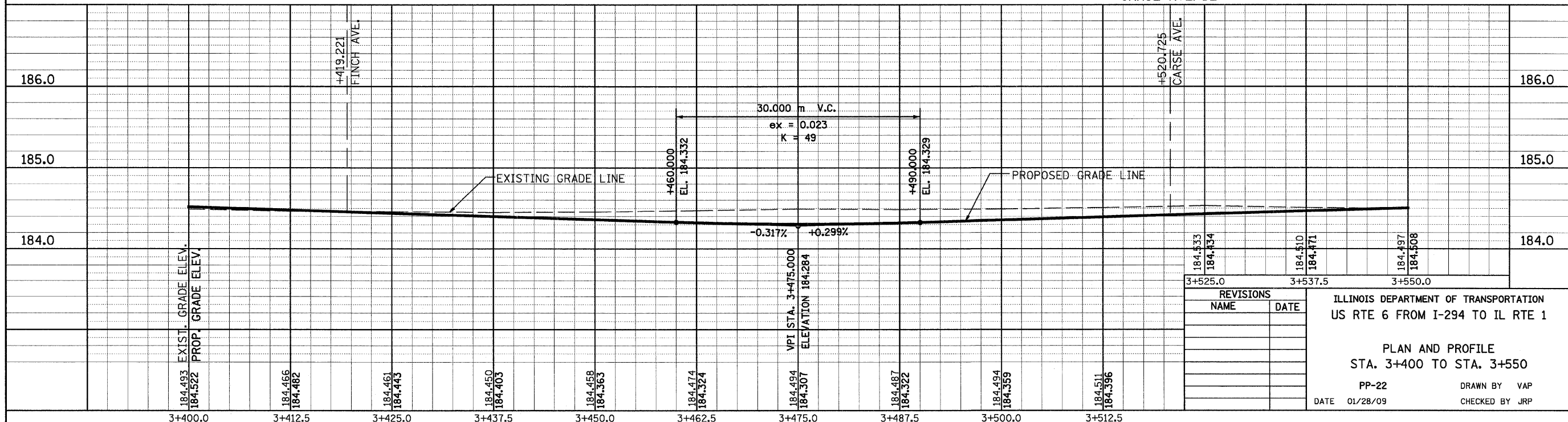
F.A.P. RTE.	SECTION	COUNTY	TOTAL SHEETS	SHEET NO.
351	3277R	COOK	541	93
STA. 3+400		TO STA. 3+550		
FED. ROAD DIST. NO.		ILLINOIS FED. AID PROJECT		
CONTRACT NO. 60774				

FINAL SURVEY	BY	DATE
SURVEY PLOTTED		
NOTE BOOK TEMPLATE		
AREAS CHECKED		
NO.		



- LEGEND:**
- \* DRIVEWAY TO BE CLOSED
  - ⊗ TREE TO BE REPLACED
  - ⊙ TREE TO BE PROTECTED
  - /// REMOVAL

ORIGINAL SURVEY	BY	DATE
SURVEY PLOTTED		
NOTE BOOK TEMPLATE		
AREAS CHECKED		
NO.		



REVISIONS	
NAME	DATE

ILLINOIS DEPARTMENT OF TRANSPORTATION  
 US RTE 6 FROM I-294 TO IL RTE 1

**PLAN AND PROFILE**  
 STA. 3+400 TO STA. 3+550

PP-22      DRAWN BY VAP  
 DATE 01/28/09      CHECKED BY JRP