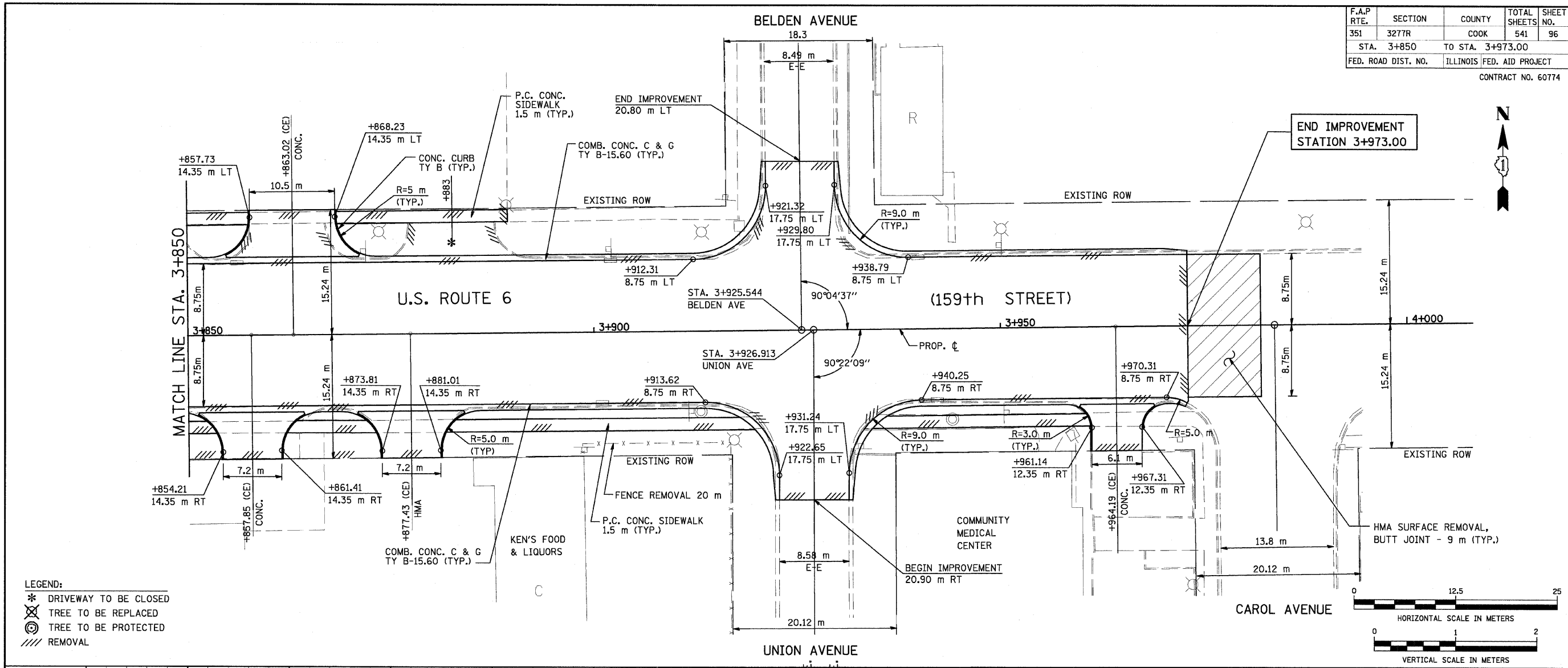


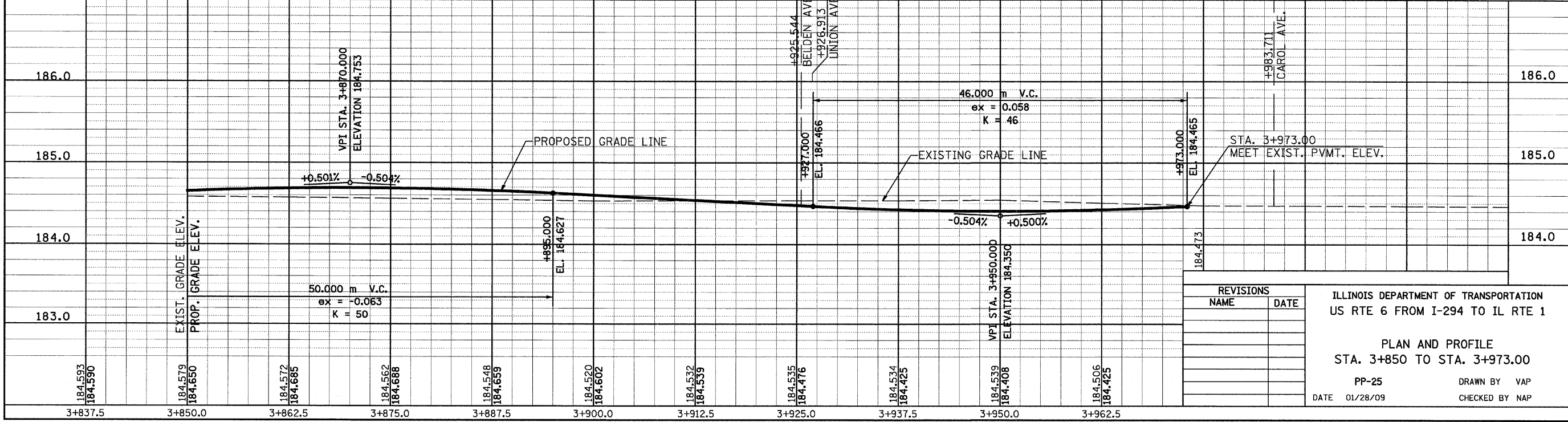
F.A.P. RTE.	SECTION	COUNTY	TOTAL SHEETS	SHEET NO.
351	3277R	COOK	541	96
STA. 3+850		TO STA. 3+973.00		
FED. ROAD DIST. NO.		ILLINOIS FED. AID PROJECT		

CONTRACT NO. 60774

BY	DATE
FINAL SURVEYED	
SURVEY PLOTTED	
NOTE BOOK TEMPLATE	
AREAS CHECKED	
NO.	



BY	DATE
ORIGINAL SURVEYED	
SURVEY PLOTTED	
NOTE BOOK TEMPLATE	
AREAS CHECKED	
NO.	



REVISIONS		ILLINOIS DEPARTMENT OF TRANSPORTATION US RTE 6 FROM I-294 TO IL RTE 1
NAME	DATE	
		PLAN AND PROFILE STA. 3+850 TO STA. 3+973.00 PP-25 DATE 01/28/09 DRAWN BY VAP CHECKED BY NAP