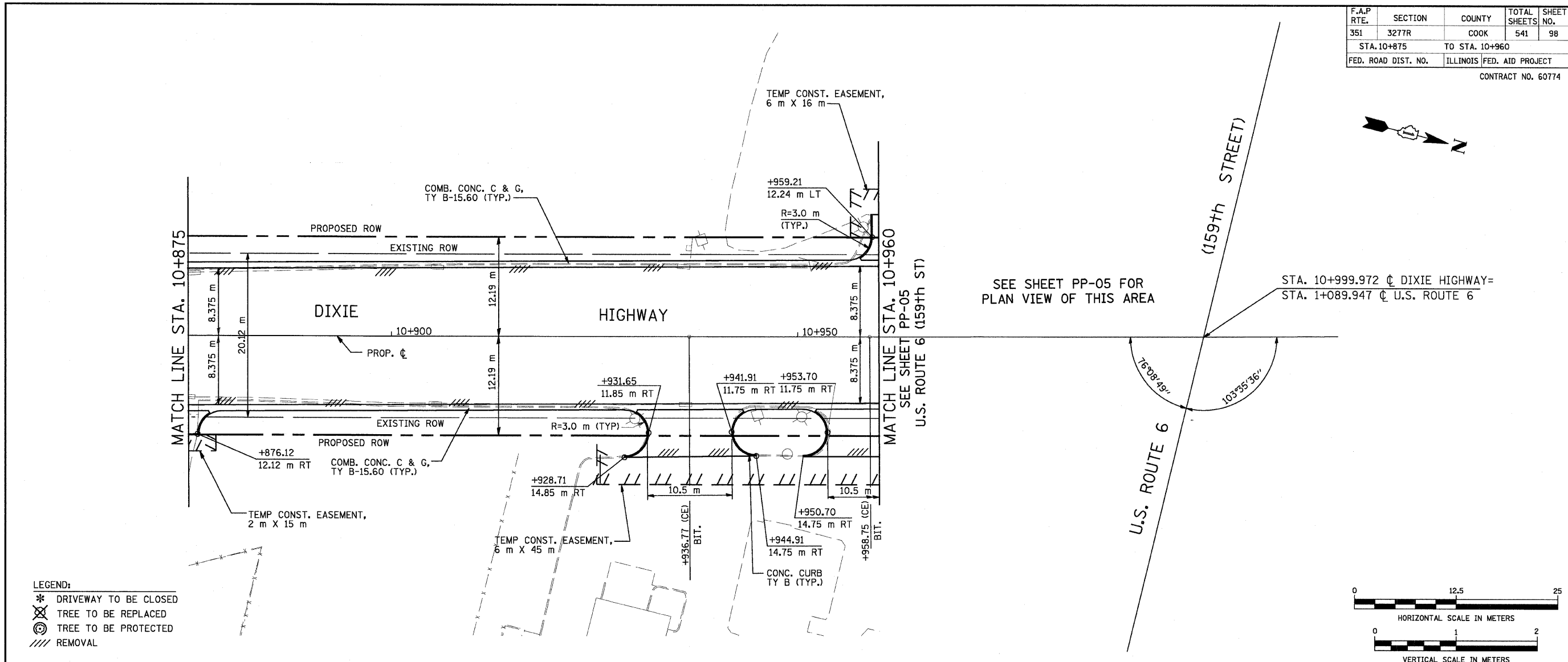
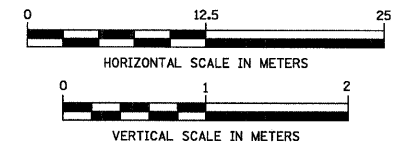


|                     |          |                  |              |           |
|---------------------|----------|------------------|--------------|-----------|
| F.A.P. RTE.         | SECTION  | COUNTY           | TOTAL SHEETS | SHEET NO. |
| 351                 | 3277R    | COOK             | 541          | 98        |
| STA. 10+875         |          | TO STA. 10+960   |              |           |
| FED. ROAD DIST. NO. | ILLINOIS | FED. AID PROJECT |              |           |
| CONTRACT NO. 60774  |          |                  |              |           |

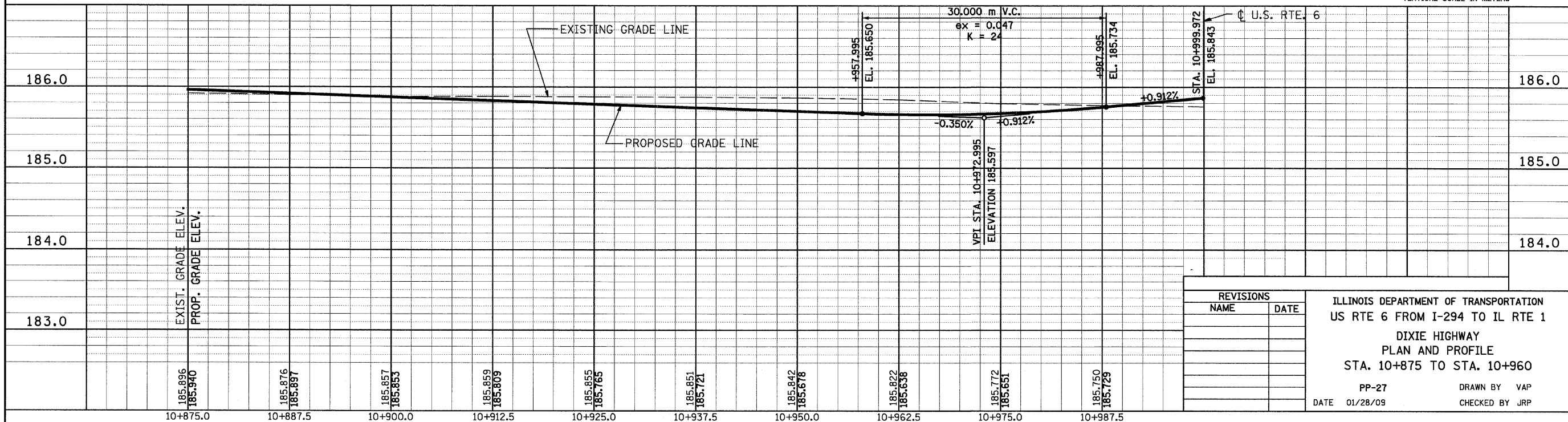
|                    |    |      |
|--------------------|----|------|
| FINAL SURVEY       | BY | DATE |
| SURVEY PLOTTED     |    |      |
| NOTE BOOK TEMPLATE |    |      |
| AREAS CHECKED      |    |      |
| NO.                |    |      |



- LEGEND:
- \* DRIVEWAY TO BE CLOSED
  - ⊗ TREE TO BE REPLACED
  - ⊙ TREE TO BE PROTECTED
  - /// REMOVAL



|                    |    |      |
|--------------------|----|------|
| ORIGINAL SURVEY    | BY | DATE |
| SURVEY PLOTTED     |    |      |
| NOTE BOOK TEMPLATE |    |      |
| AREAS CHECKED      |    |      |
| NO.                |    |      |



| REVISIONS |      |
|-----------|------|
| NAME      | DATE |
|           |      |
|           |      |
|           |      |
|           |      |
|           |      |
|           |      |
|           |      |
|           |      |
|           |      |
|           |      |

ILLINOIS DEPARTMENT OF TRANSPORTATION  
US RTE 6 FROM I-294 TO IL RTE 1  
DIXIE HIGHWAY  
PLAN AND PROFILE  
STA. 10+875 TO STA. 10+960

PP-27      DRAWN BY VAP  
DATE 01/28/09      CHECKED BY JRP