

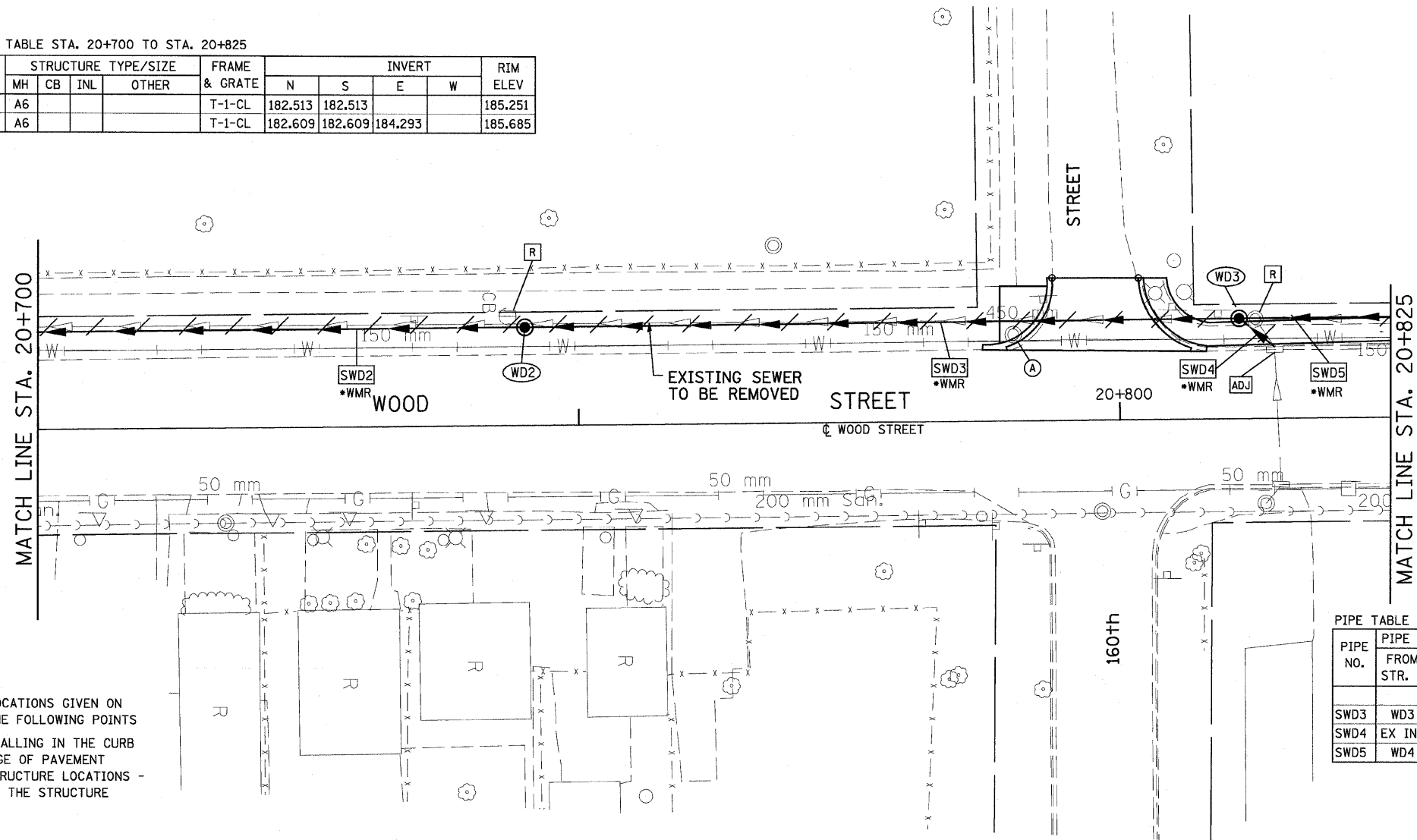
F.A.P. RTE.	SECTION	COUNTY	TOTAL SHEETS	SHEET NO.
351	3277R	COOK	541	134
STA. 20+700		TO STA. 20+825		
FED. ROAD DIST. NO.		ILLINOIS FED. AID PROJECT		
CONTRACT NO. 60774				

DRAINAGE STRUCTURE TABLE STA. 20+700 TO STA. 20+825

NO.	STA.	OFFSET	STRUCTURE TYPE/SIZE				FRAME & GRATE	INVERT				RIM ELEV
			MH	CB	INL	OTHER		N	S	E	W	
WD2	20+745.200	9.000 LT	A6				T-1-CL	182.513	182.513			185.251
WD3	20+811.000	9.200 LT	A6				T-1-CL	182.609	182.609	184.293		185.685

BY	DATE
FINAL SURVEY PLOTTED	
NOTE BOOK TEMPLATE	
AREAS CHECKED	
NO.	

BY	DATE
ORIGINAL SURVEY PLOTTED	
NOTE BOOK TEMPLATE	
AREAS CHECKED	
NO.	

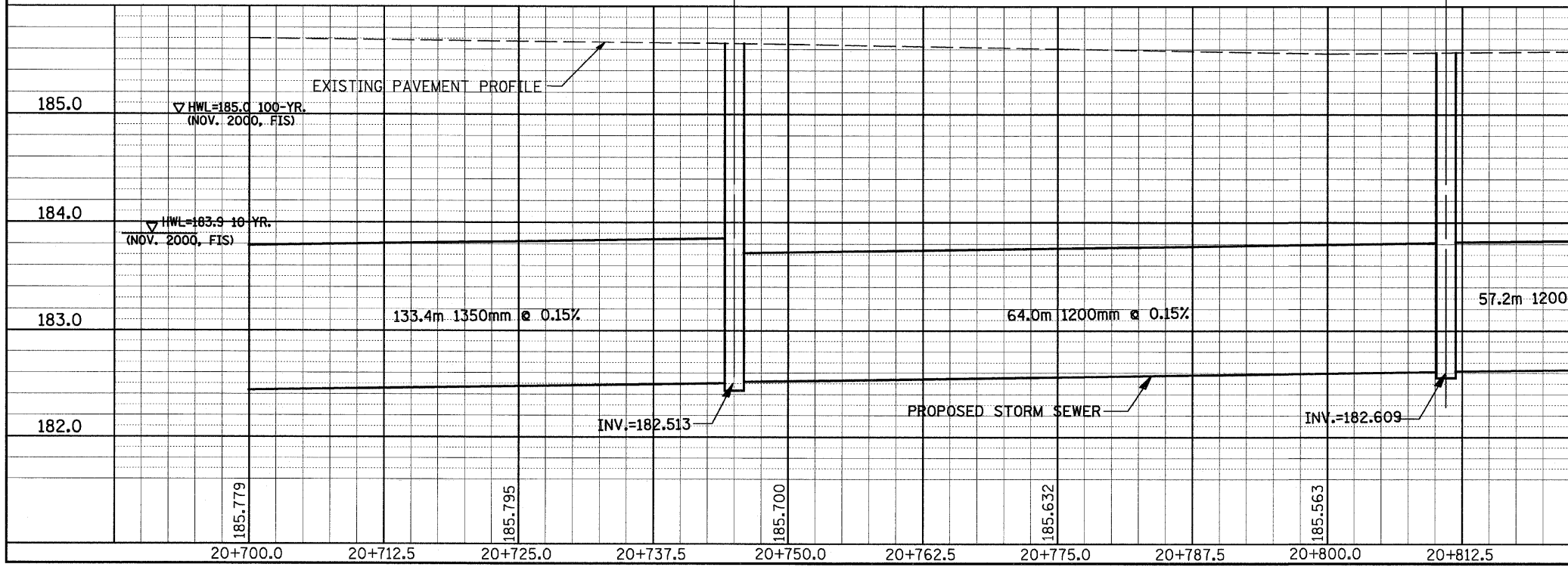
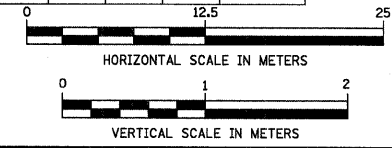


**DRAINAGE TABLE LEGEND**  
A4 = TYPE A, 1.2m DIAMETER  
A5 = TYPE A, 1.5m DIAMETER  
A6 = TYPE A, 1.8m DIAMETER  
A7 = TYPE A, 2.1m DIAMETER  
•WMR = WATER MAIN REQUIREMENTS

**NOTE:**  
STRUCTURE OFFSET LOCATIONS GIVEN ON THE PLANS ARE TO THE FOLLOWING POINTS  
A) FOR STRUCTURES FALLING IN THE CURB LINE - TO THE EDGE OF PAVEMENT  
B) FOR ALL OTHER STRUCTURE LOCATIONS - TO THE CENTER OF THE STRUCTURE

PIPE TABLE STA. 20+700 TO STA. 20+825

PIPE NO.	PIPE LOCATION		DESCRIPTION	DIA. (mm)	L (M)	S (%)	TRENCH BACKFILL VOLUME (CU M)
	FROM STR. #	TO STR. #					
SWD3	WD3	WD2	SS, WMR	1200	64.0	0.15	83.0
SWD4	EX INL	WD3	SS, WMR	300	4.3	1.00	3.1
SWD5	WD4	WD3	SS, WMR	1200	57.2	0.15	232.1



REVISIONS	
NAME	DATE

ILLINOIS DEPARTMENT OF TRANSPORTATION  
US RTE 6 FROM I-294 TO IL RTE 1  
WOOD STREET @ US RTE 6  
DRAINAGE AND UTILITIES  
STA. 20+700 TO STA. 20+825

DU-30  
DATE 01/28/09  
DRAWN BY JAM  
CHECKED BY JWK