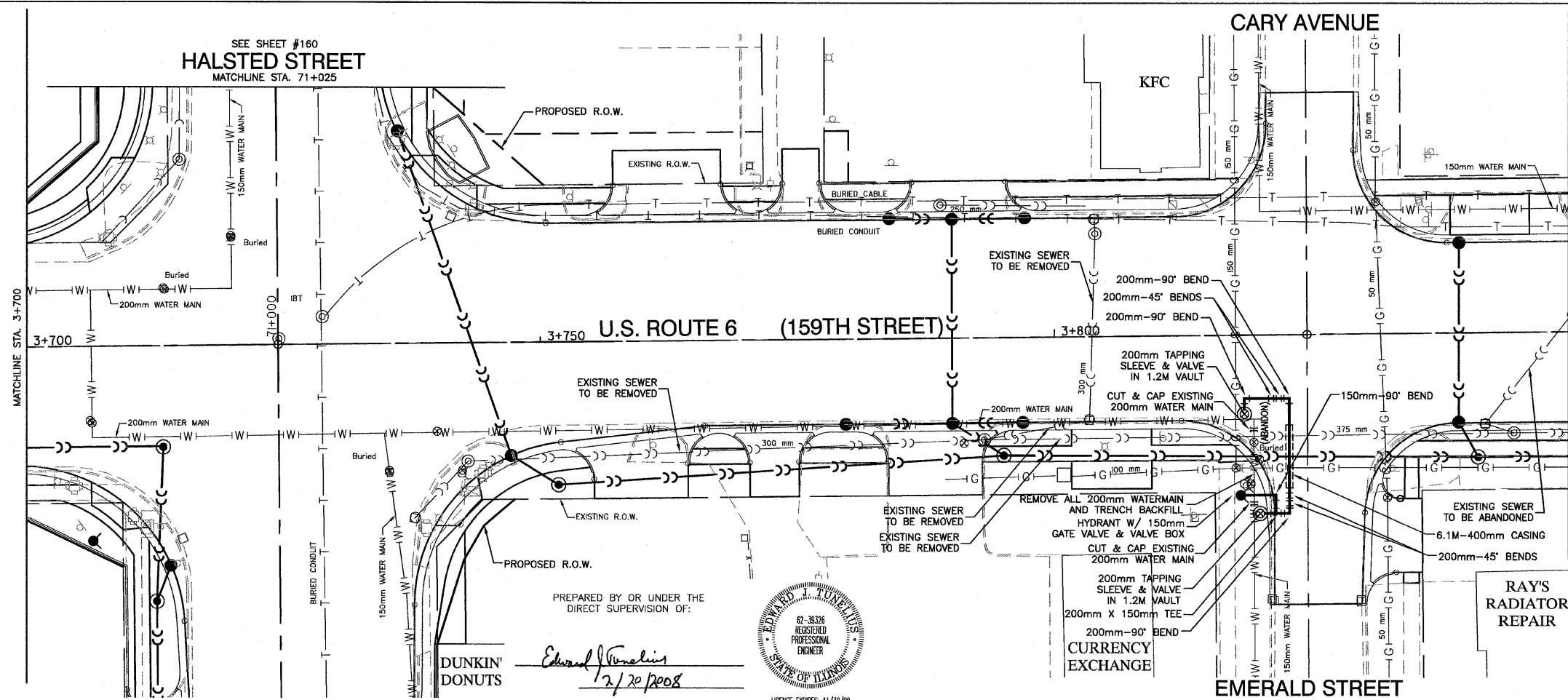
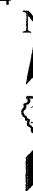


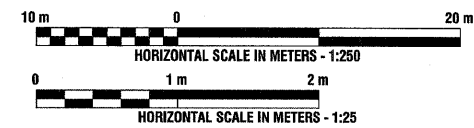
SEE SHEET #160  
**HALSTED STREET**  
 MATCHLINE STA. 71+025

F. A. L. NO.	SECTION	COUNTY	TOTAL SHEETS	SHEET NO.
351	3277R	COOK	541	159
STA. 3+700	TO STA. 3+850			
FED. ROAD DIST. NO.	ALIGNS	FED. AID PROJECT		

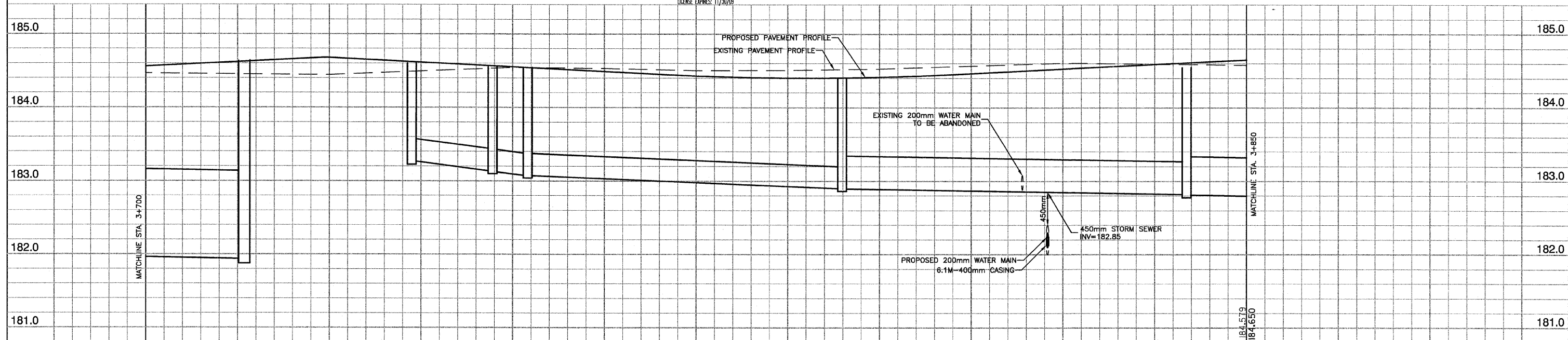
CONTRACT NO. 60774



- LEGEND**
- |W|— EXISTING WATER MAIN
  - |P|— PROPOSED WATER MAIN ADJUSTMENT
  - ▶ PROPOSED BUFFALO BOX
  - ⊘ PROPOSED REDUCER
  - ⊙ PROPOSED FIRE HYDRANT
  - ⊙ PROPOSED WATER VALVE IN VAULT



PREPARED BY OR UNDER THE DIRECT SUPERVISION OF:  
*Edward J. Tomalis*  
 12/20/2008



XXX.XX = EXISTING ELEVATION  
 XXX.XX = PROPOSED ELEVATION

3+700.0	184.464 184.558	3+712.5	184.452 184.620	3+725.0	184.441 184.677	3+737.5	184.495 184.615	3+750.0	184.542 184.552	3+762.5	184.530 184.490	3+775.0	184.503 184.430	3+787.5	184.507 184.403	3+800.0	184.511 184.415	3+812.5	184.566 184.465	3+825.0	184.606 184.527	3+837.5	184.593 184.590
---------	--------------------	---------	--------------------	---------	--------------------	---------	--------------------	---------	--------------------	---------	--------------------	---------	--------------------	---------	--------------------	---------	--------------------	---------	--------------------	---------	--------------------	---------	--------------------

REVISIONS	
NAME	DATE

ILLINOIS DEPARTMENT OF TRANSPORTATION  
**PROPOSED WATERMAIN RELOCATION**  
**U.S. ROUTE 6 FROM I-294 TO IL ROUTE 1**  
**DRAINAGE & UTILITIES**  
**STA. 3+700 TO STA. 3+850**

SCALE: VERT. 1:25  
 HORIZ. 1:250  
 DATE 2/29/08

DRAWN BY PS  
 CHECKED BY EJT