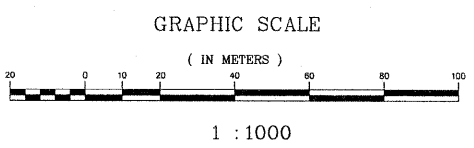
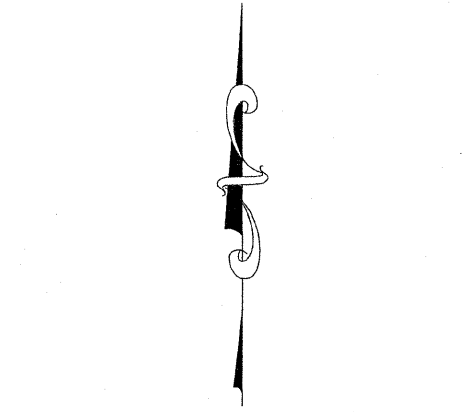
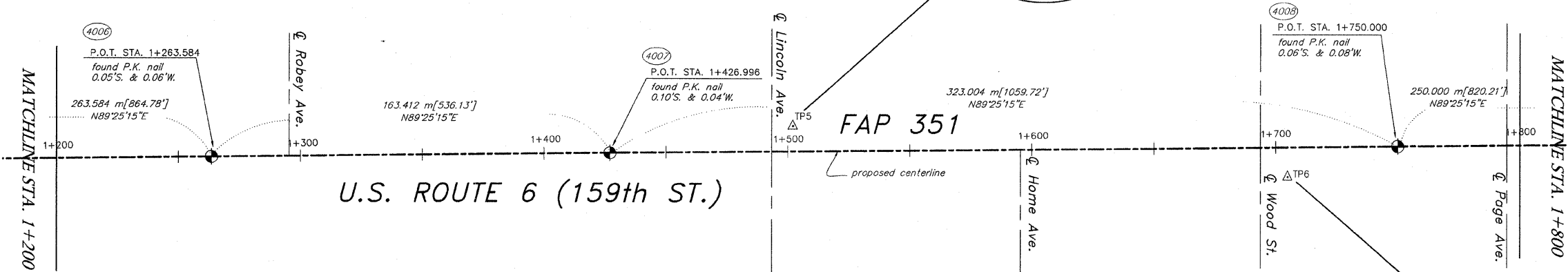
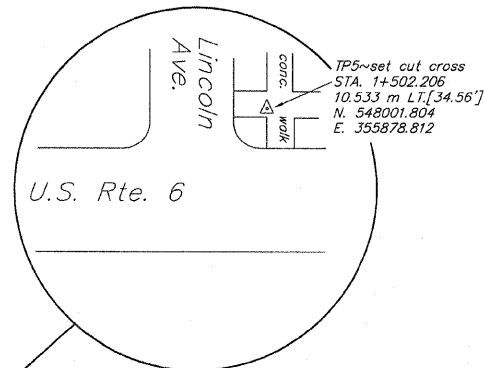
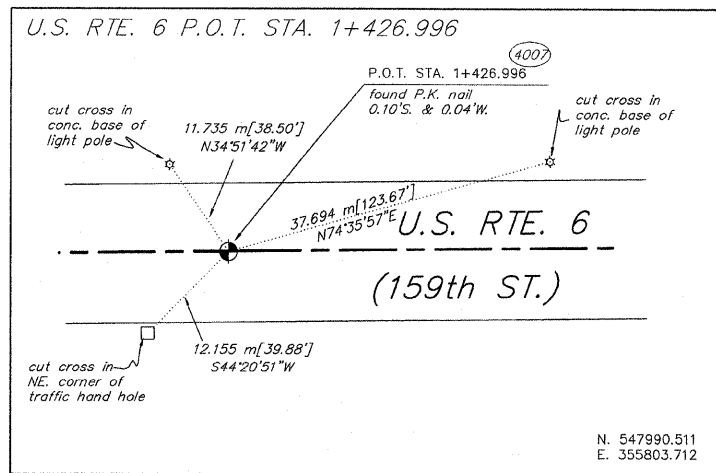


# PLAT OF SURVEY

TOTAL SHEETS 541  
NO. 166



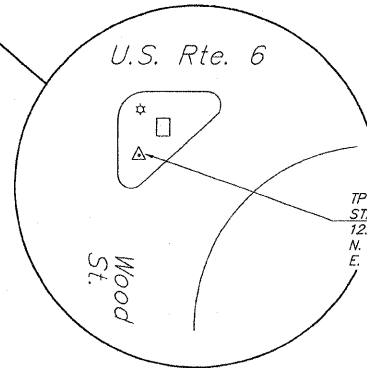
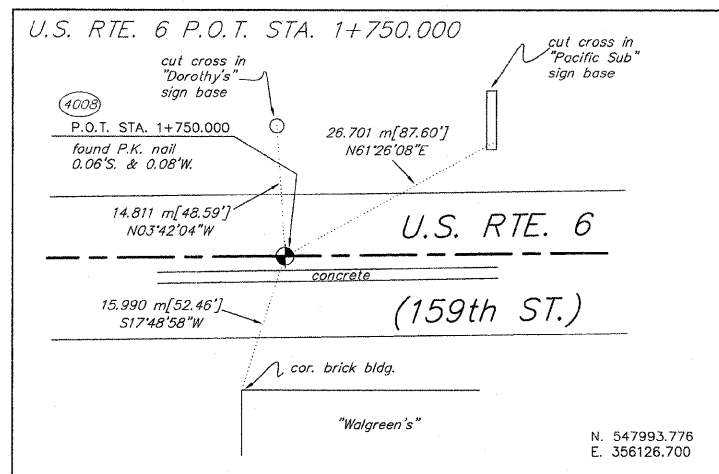
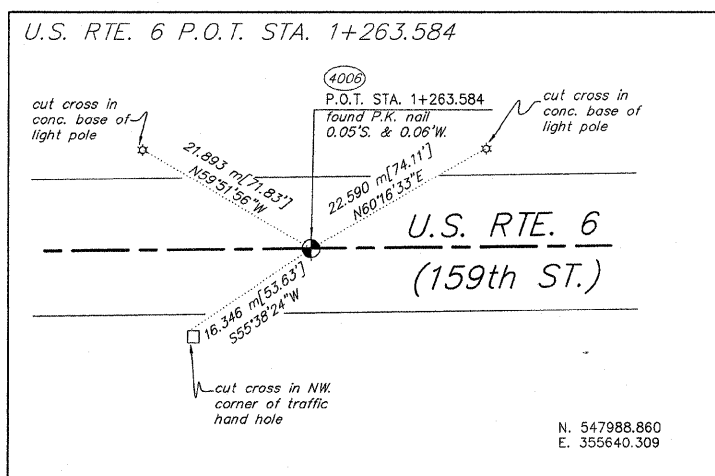
NOTES:

METRIC PROJECT COORDINATES ARE SHOWN FOR THE TRAVERSE POINTS AND CENTERLINE CONTROL MONUMENTS. COORDINATES ARE GROUND VALUES AND CAN BE CONVERTED TO GRID VALUES BY MULTIPLYING THE PUBLISHED GROUND COORDINATES BY 0.999988. COORDINATES OF CENTERLINE CONTROL ARE FOR THE COMPUTED LOCATION OF THE CONTROL POINT. POSITION OF FOUND MONUMENTS ARE REFERENCED TO THE COMPUTED POSITIONS. TIE DISTANCES ARE ALSO MEASURED TO THE COMPUTED LOCATIONS OF THE CENTERLINE CONTROL POINTS.

ALL CENTERLINE GEOMETRY, AND STATION AND OFFSETS SHOWN ABOVE ARE FOR THE PROPOSED CENTERLINE UNLESS OTHERWISE NOTED.

ALL STATIONING IS IN METRIC UNITS. DISTANCES ARE IN FEET AND METERS. [75.29'] DENOTES TYPICAL DISTANCE IN FEET. 41.774 m DENOTES TYPICAL METRIC DISTANCE.

SEE SHEET 8 FOR SECTION LINE INFORMATION.



RECEIVED  
MAR 31 2000  
LATS & LEGAL

STATE OF ILLINOIS )  
COUNTY OF WILL )SS

RUETTIGER, TONELLI & ASSOCIATES, INC., AN ILLINOIS PROFESSIONAL LAND SURVEYOR CORPORATION, HEREBY CERTIFIES THAT IT HAS SURVEYED THE CENTERLINE OF U.S. ROUTE 6 AS SHOWN ON THE ANNEXED PLAT, WHICH IS A TRUE AND CORRECT REPRESENTATION OF SAID SURVEY GIVEN UNDER THE CORPORATE SEAL THIS 30th DAY OF MARCH, 2000

BY: *[Signature]*  
ILLINOIS PROFESSIONAL LAND SURVEYOR

SHEET 3 OF 8

**RUETTIGER, TONELLI & ASSOCIATES, INC.**  
Land Surveyors/Consultants/Engineers/Planners

2174 ONEIDA STREET  
JOLIET, ILLINOIS 60435  
PH. (815) 744-8800

2603 SOUTH WASHINGTON STREET, SUITE 170  
NAPERVILLE, ILLINOIS 60565  
PH. (630) 459-7740

DATE 3-17-00 / SCALE 1:1000 / DRAWN BY TW / FIELD BOOK

ILLINOIS DEPT. OF TRANSPORTATION  
201 WEST CENTER COURT  
SCHAUMBURG, ILLINOIS 60196

LEGEND  
meas. = MEASURED  
rec. = RECORDED  
calc. = CALCULATED  
TO SET 5/8" PINS UNLESS OTHERWISE NOTED  
FOUND SURVEY MONUMENT

DRAWING No. 300-0161

N:\Tech\2000\0361\541\31.dwg Thu Mar 30 10:45:47 2000 TLW

ANY DISCREPANCY IN MEASUREMENT DISCOVERED UPON THE GROUND SHOULD BE PROMPTLY REPORTED TO THE SURVEYOR FOR EXPLANATION OR CORRECTION.

FOR BUILDING LINE AND OTHER RESTRICTIONS NOT SHOWN HEREON REFER TO YOUR ABSTRACT, DEEDS, CONTRACTS AND ZONING ORDINANCES.