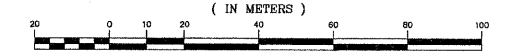


PLAT OF SURVEY

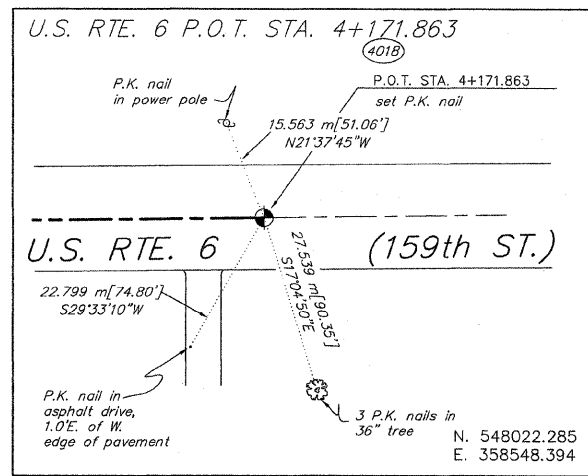
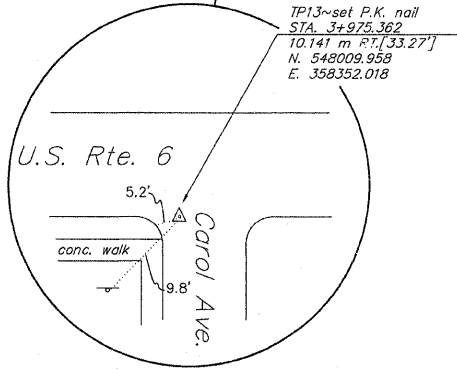
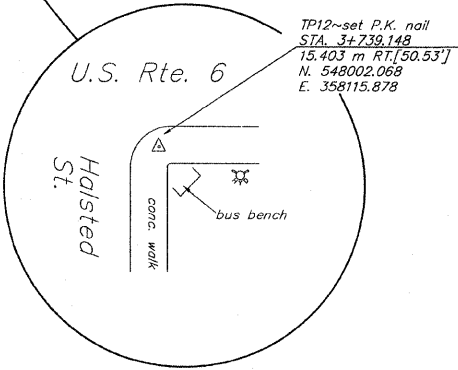
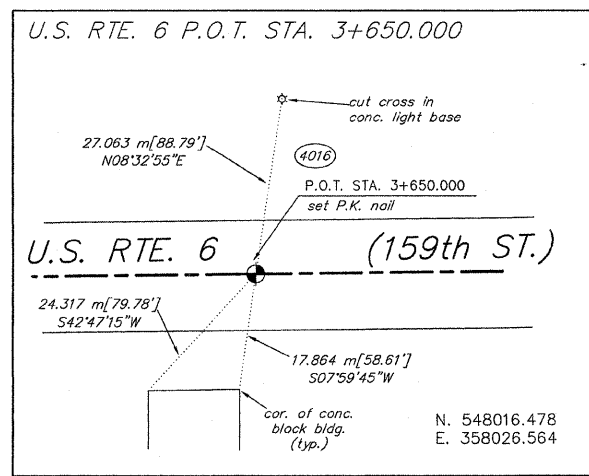
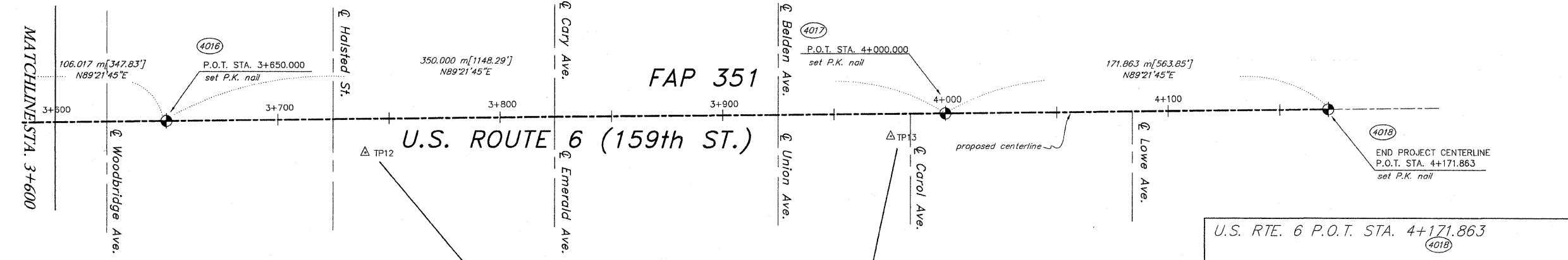
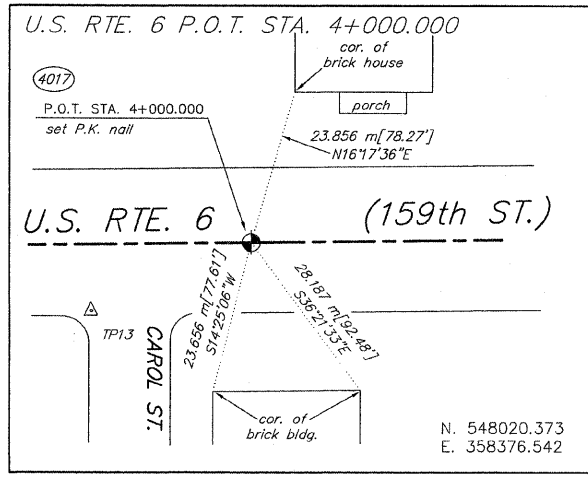
TOTAL SHEETS 541
SHEET NO. 170



GRAPHIC SCALE



1 : 1000



NOTES:
METRIC PROJECT COORDINATES ARE SHOWN FOR THE TRAVERSE POINTS AND CENTERLINE CONTROL MONUMENTS. COORDINATES ARE GROUND VALUES AND CAN BE CONVERTED TO GRID VALUES BY MULTIPLYING THE PUBLISHED GROUND COORDINATES BY 0.999988. COORDINATES OF CENTERLINE CONTROL ARE FOR THE COMPUTED LOCATION OF THE CONTROL POINT. POSITION OF FOUND MONUMENTS ARE REFERENCED TO THE COMPUTED POSITIONS. TIE DISTANCES ARE ALSO MEASURED TO THE COMPUTED LOCATIONS OF THE CENTERLINE CONTROL POINTS.
ALL CENTERLINE GEOMETRY, AND STATION AND OFFSETS SHOWN ABOVE ARE FOR THE PROPOSED CENTERLINE UNLESS OTHERWISE NOTED.
ALL STATIONING IS IN METRIC UNITS. DISTANCES ARE IN FEET AND METERS. [75.29'] DENOTES TYPICAL DISTANCE IN FEET. 41.774 m DENOTES TYPICAL METRIC DISTANCE.
SEE SHEET 8 FOR SECTION LINE INFORMATION.



RECEIVED
MAR 31 2000
"LATS & LEGAL"
STATE OF ILLINOIS }
COUNTY OF WILL }
RUETTIGER, TONELLI & ASSOCIATES, INC., AN ILLINOIS PROFESSIONAL LAND SURVEYOR CORPORATION, HEREBY CERTIFIES THAT IT HAS SURVEYED THE CENTERLINE OF U.S. ROUTE 6 AS SHOWN ON THE ANNEXED PLAT, WHICH IS A TRUE AND CORRECT REPRESENTATION OF SAID SURVEY.
GIVEN UNDER THE CORPORATE SEAL THIS 30th DAY OF MARCH, 2000
BY [Signature] ILLINOIS PROFESSIONAL LAND SURVEYOR

SHEET 7 OF 8

RUETTIGER, TONELLI & ASSOCIATES, INC.
Land Surveyors/Consultants/Engineers/Planners
2174 ONEDA STREET, JOLIET, ILLINOIS 60455
2803 SOUTH WASHINGTON STREET, SUITE 170, MAPLEVIEW, ILLINOIS 60465
PH. (815) 744-8600 PH. (630) 420-7740

DATE 3-17-00 SCALE 1:1000 DRAWN BY TW FIELD BOOK

ILLINOIS DEPT. OF TRANSPORTATION
201 WEST CENTER COURT
SCHAUMBURG, ILLINOIS 60196

DRAWING NO. 300-0161

N:\Tech\2000\0561\BHTx.dwg Thu Mar 30 11:18:11 2000 TLM

ANY DISCREPANCY IN MEASUREMENT DISCOVERED UPON THE GROUND SHOULD BE PROMPTLY REPORTED TO THE SURVEYOR FOR EXPLANATION OR CORRECTION.
FOR BUILDING LINE AND OTHER RESTRICTIONS NOT SHOWN HEREON REFER TO YOUR ABSTRACT, DEEDS, CONTRACTS AND ZONING ORDINANCES.