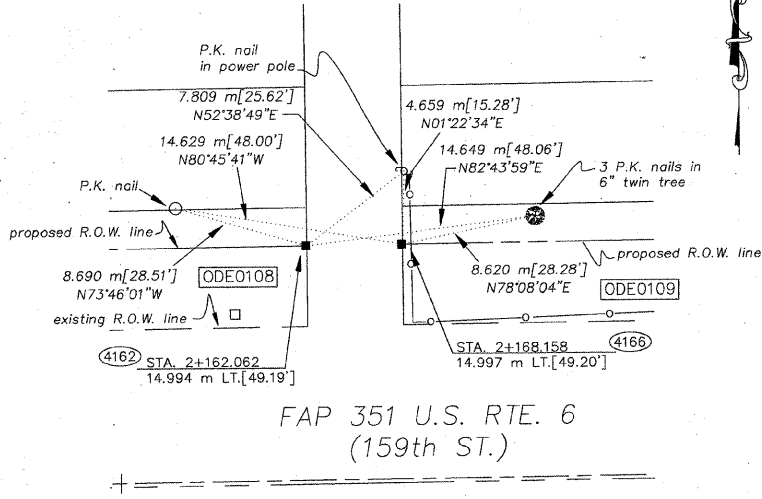
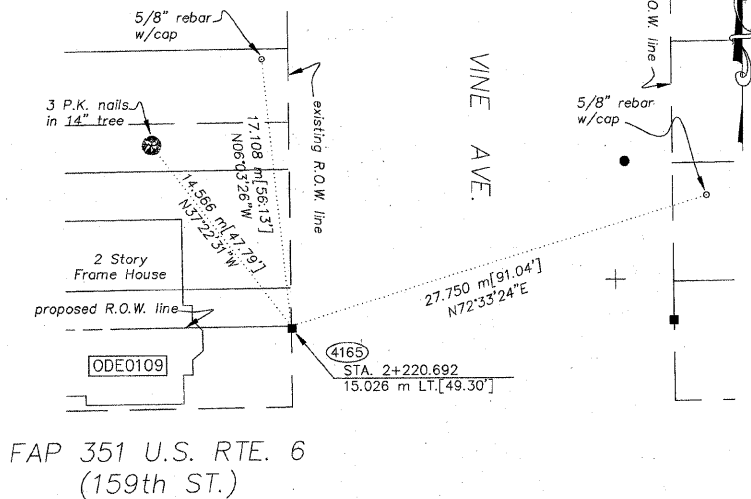


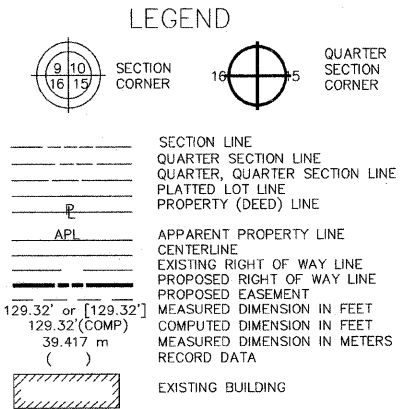
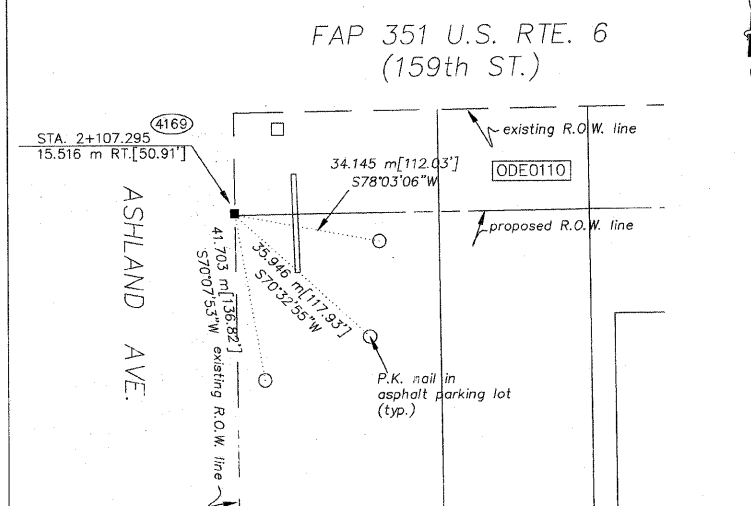
STA. 2+162.062/14.994 m LT. N.548013.101 E.356538.549
 STA. 2+168.158/14.997 m LT. N.548013.182 E.356544.645



STA. 2+220.692/15.026 m RT. N.548013.876 E.356597.174

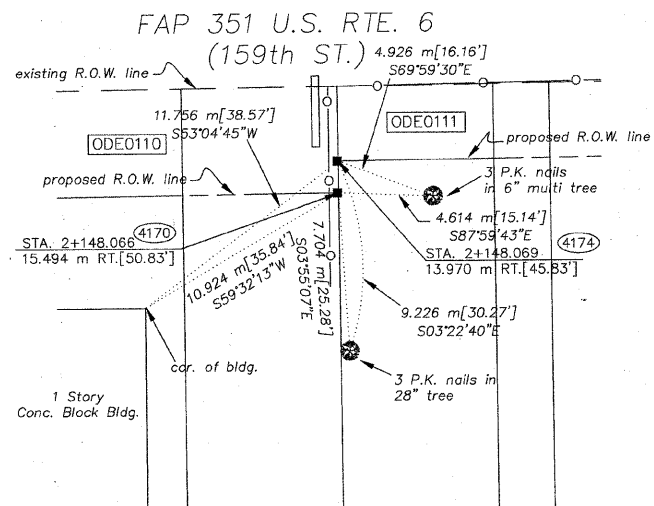


STA. 2+107.295/15.516 m RT. N.547981.899 E.356484.173

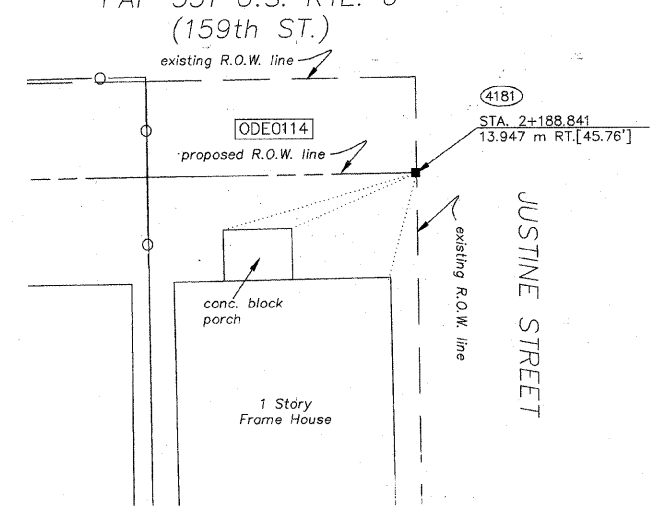


- IRON PIPE OR ROD FOUND
- + CUT CROSS FOUND OR SET
- T1 THESE STAKES REFERENCE FOUND OR SET MONUMENTATION. SET 5/8 INCH IRON ROD FLUSH WITH GROUND TO THE FOUND IRON STAKE. IDENTIFIED BY COLORED PLASTIC CAP BEARING SURVEYORS REGISTRATION NUMBER.
- T2
- T3
- BT1 THESE STAKES, IN CULTIVATED AREAS, REFERENCE FOUND OR SET MONUMENTATION. BURIED 5/8 INCH IRON ROD 20 INCHES BELOW GROUND TO THE FOUND IRON STAKE. IDENTIFIED BY COLORED PLASTIC CAP BEARING SURVEYORS REGISTRATION NUMBER.
- BT2
- BT3
- M STAKING OF PROPOSED RIGHT OF WAY. SET DIVISION OF HIGHWAYS SURVEY MARKER TO MONUMENT THE POSITION SHOWN. IDENTIFIED BY INSCRIPTION DATA AND SURVEYORS REGISTRATION NUMBER.
- PERMANENT SURVEY MARKER, I.D.O.T. STD. 2135 (TO BE SET BY OTHERS)
- RIGHT OF WAY STAKING PROPOSED TO BE SET.

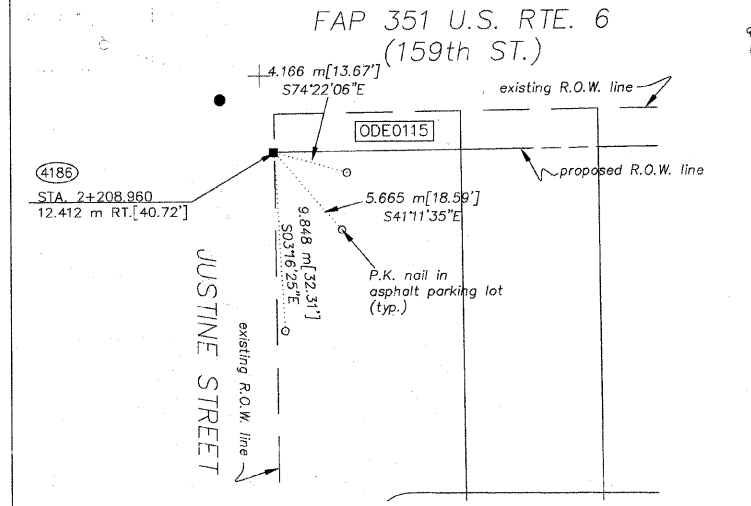
STA. 2+148.066/15.494 m RT. N.547982.438 E.356524.941
 STA. 2+148.069/13.970 m RT. N.547983.962 E.356524.924



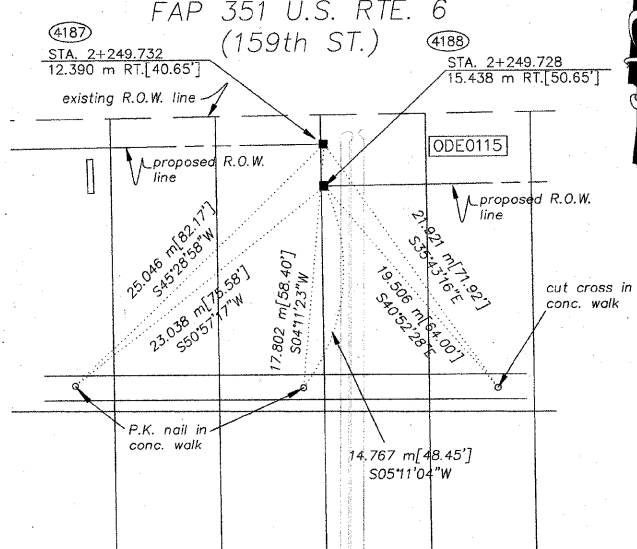
STA. 2+188.841/13.947 m RT. N.547984.501 E.356565.693



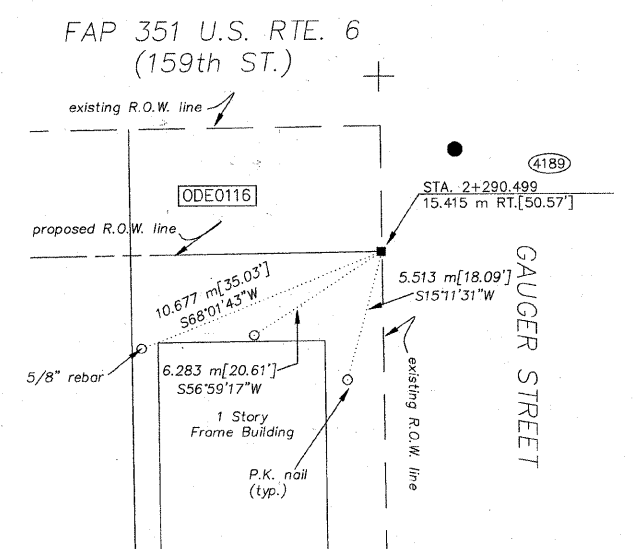
STA. 2+208.960/12.412 m RT. N.547986.291 E.356585.791



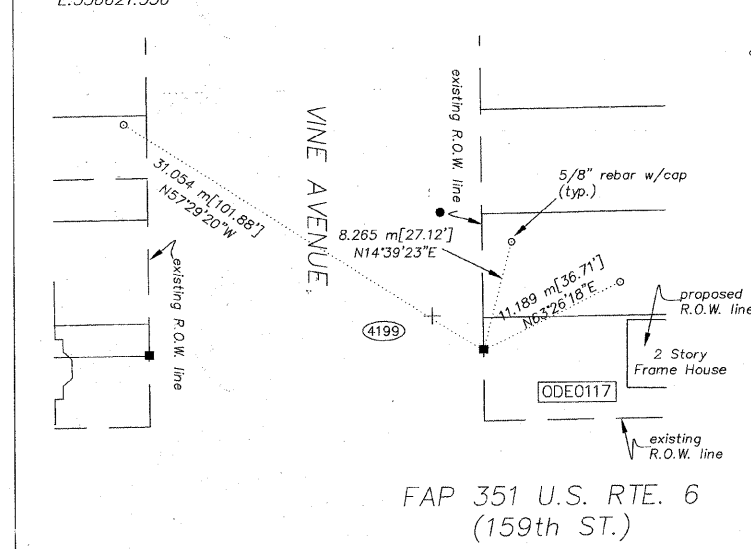
STA. 2+249.732/12.390 m RT. N.547986.830 E.356626.559
 STA. 2+249.728/15.438 m RT. N.547983.782 E.356626.593



STA. 2+290.499/15.415 m RT. N.547984.321 E.356667.362



STA. 2+245.077/15.040 m LT. N.548014.199 E.356621.556



STATE OF ILLINOIS)
 COUNTY OF WILL)



THIS IS TO CERTIFY THAT RUETTIGER, TONELLI & ASSOCIATES, INC., AN ILLINOIS DESIGN FIRM, HAS SURVEYED THE PLAT OF HIGHWAYS SHOWN HEREON BETWEEN SECTION 20, TOWNSHIP 36 NORTH, RANGE 14 EAST, AND SECTION 17, TOWNSHIP 36 NORTH, RANGE 14 EAST OF THE THIRD PRINCIPAL MERIDIAN, COOK COUNTY; THAT THE SURVEY IS TRUE AND COMPLETE AS SHOWN TO THE BEST OF MY KNOWLEDGE AND BELIEF; THAT THE PLAT CORRECTLY REPRESENTS SAID SURVEY, THAT ALL MONUMENTS FOUND AND ESTABLISHED ARE OF PERMANENT QUALITY AND OCCUPY THE POSITIONS SHOWN THEREON AND THAT THE MONUMENTS ARE SUFFICIENT TO ENABLE THE SURVEY TO BE RETRACED. MADE FOR THE DEPARTMENT OF TRANSPORTATION, STATE OF ILLINOIS.

DATED AT JOLIET, ILLINOIS THIS 19th DAY OF FEBRUARY 2007 A.D.
 RONALD F. HODGEN P.L.S. NO. 2630
 MY LICENSE EXPIRES 11-30-2008

METRIC PROJECT COORDINATES ARE GROUND VALUES AND CAN BE CONVERTED TO GRID VALUES BY MULTIPLYING THE PUBLISHED GROUND COORDINATES BY 0.999988.

RUETTIGER, TONELLI & ASSOCIATES, INC.
 Land Surveyors/Engineers/Planners/Landscape Architects/C.I.S. Consultants
 2714 GREGA STREET SUITE 170
 JOLIET, ILLINOIS 60435
 PH. (815) 744-5600 FAX (815) 744-0191

PLAT OF HIGHWAYS
 STATE OF ILLINOIS
 DEPARTMENT OF TRANSPORTATION
 FAP 351 U.S. RTE. 6 (159th ST.)
 SECTION COOK COUNTY
 PROJECT JOB NO. R90-011-99
 STATION TO STATION
 SCALE: N/A SHEET B17 OF B17

BUREAU OF LAND ACQUISITION
 201 WEST CENTER COURT
 SCHAUMBURG, ILLINOIS 60196

BASIS OF BEARINGS IS THE ILLINOIS STATE PLANE COORDINATE SYSTEM, EAST ZONE, NAD 83
 SHEET 1 IS A COVER SHEET AND IS NOT RECORDED.
 SEE SHEETS 16-23 FOR COORDINATE DATA & REFERENCE TIES.

REVISION DATE	REVISION	MADE BY