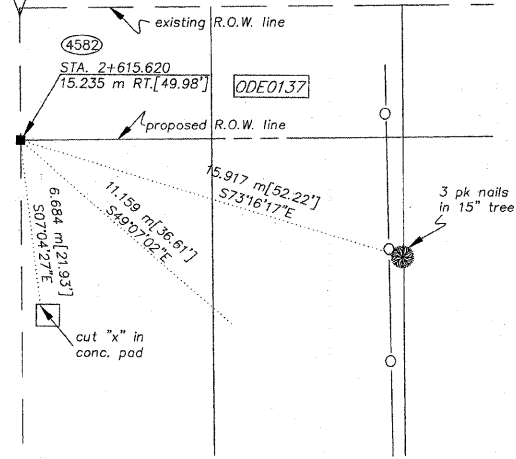


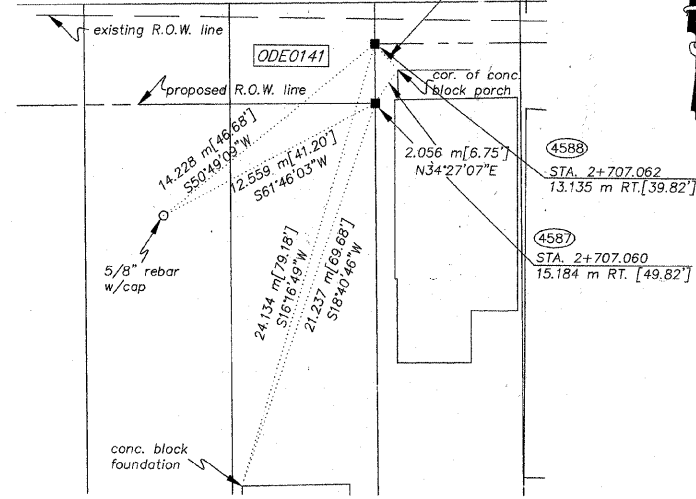
STA. 2+615.620/15.235 m RT.
N.547988.620
E.356992.453

FAP 351 U.S. RTE. 6
(159th STREET)

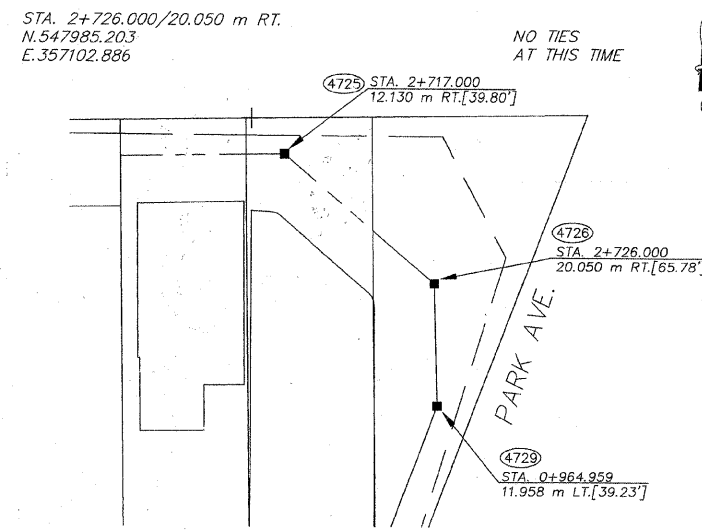


STA. 2+707.062/13.135 m RT. STA. 2+707.060/15.184 m RT.
N.547992.877 N.547989.829
E.357083.849 E.357083.885

FAP 351 U.S. RTE. 6
(159th STREET)

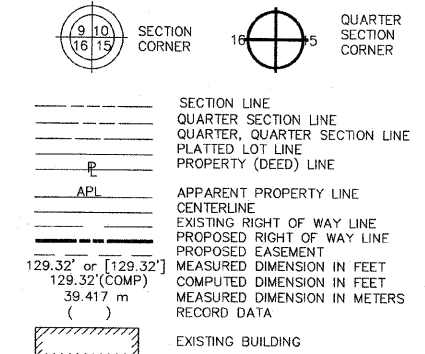


STA. 2+717.000/12.130 m RT. STA. 0+964.959/11.958 m LT.
N.547993.008 N.547977.699
E.357093.786 E.357103.078



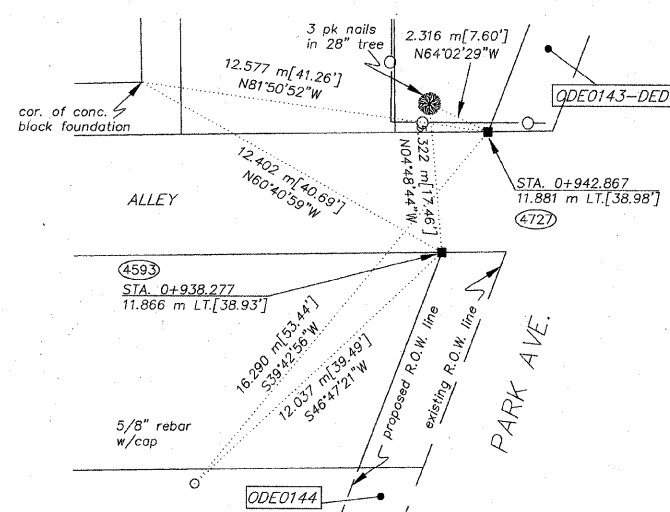
TOTAL SHEET NO. 541 208

LEGEND

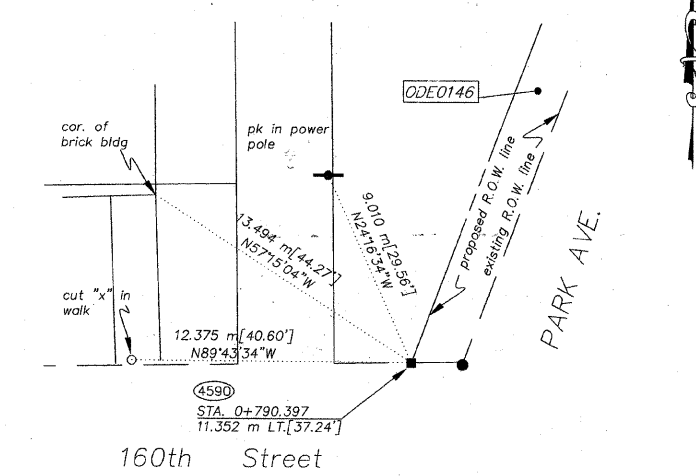


- IRON PIPE OR ROD FOUND
- + CUT CROSS FOUND OR SET
- T1 THESE STAKES REFERENCE FOUND OR SET MONUMENTATION. SET 5/8 INCH IRON ROD FLUSH WITH GROUND TO TIE FOUND IRON STAKE. IDENTIFIED BY COLORED PLASTIC CAP BEARING SURVEYORS REGISTRATION NUMBER.
- T2 THESE STAKES, IN CULTIVATED AREAS, REFERENCE FOUND OR SET MONUMENTATION. BURIED 5/8 INCH IRON ROD 20 INCHES BELOW GROUND TO THE FOUND IRON STAKE. IDENTIFIED BY COLORED PLASTIC CAP BEARING SURVEYORS REGISTRATION NUMBER.
- BT1 STAKING OF PROPOSED RIGHT OF WAY. SET DIVISION OF HIGHWAYS SURVEY MARKER TO MONUMENT THE POSITION SHOWN. IDENTIFIED BY INSCRIPTION DATA AND SURVEYORS REGISTRATION NUMBER.
- M STAKING OF PROPOSED RIGHT OF WAY IN CULTIVATED AREAS. BURIED 5/8 INCH METAL ROD 20 INCHES BELOW GROUND TO MARK FUTURE SURVEY MARKER POSITION. IDENTIFIED BY COLORED PLASTIC CAP BEARING SURVEYORS REGISTRATION NUMBER.
- PERMANENT SURVEY MARKER, I.D.O.T. STD. 2135 (TO BE SET BY OTHERS)
- RIGHT OF WAY STAKING PROPOSED TO BE SET.

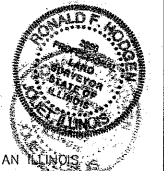
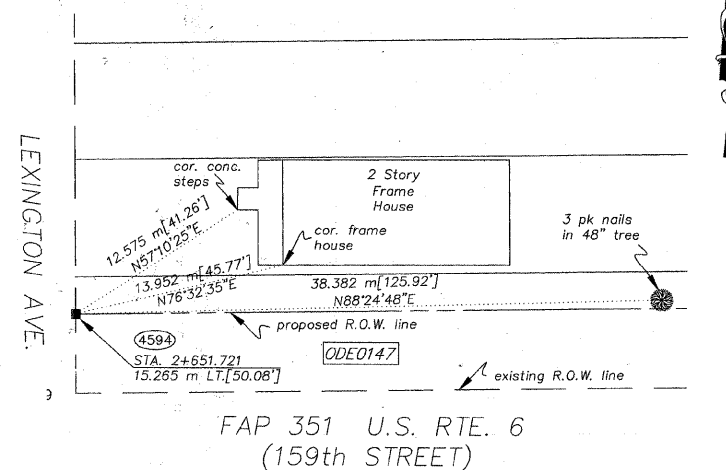
STA. 0+938.277/11.866 m LT. STA. 0+942.867/11.881 m LT.
N.547952.768 N.547957.057
E.357093.568 E.357095.204



STA. 0+790.397/11.352 m LT.
N.547814.598
E.357040.865



STA. 2+651.721/15.265 m LT.
N.548019.575
E.357028.166



STATE OF ILLINOIS }
COUNTY OF WILL }

THIS IS TO CERTIFY THAT RUETTIGER, TONELLI & ASSOCIATES, INC., AN ILLINOIS DESIGN FIRM, HAD SURVEYED THE PLAT OF HIGHWAYS SHOWN HEREON BETWEEN SECTION 20, TOWNSHIP 36 NORTH, RANGE 14 EAST, AND SECTION 17, TOWNSHIP 36 NORTH, RANGE 14 EAST OF THE THIRD PRINCIPAL MERIDIAN, COOK COUNTY; THAT THE SURVEY IS TRUE AND COMPLETE AS SHOWN TO THE BEST OF MY KNOWLEDGE AND BELIEF; THAT THE PLAT CORRECTLY REPRESENTS SAID SURVEY, THAT ALL MONUMENTS FOUND AND ESTABLISHED ARE OF PERMANENT QUALITY AND OCCUPY THE POSITIONS SHOWN THEREON AND THAT THE MONUMENTS ARE SUFFICIENT TO ENABLE THE SURVEY TO BE RETRACED. MADE FOR THE DEPARTMENT OF TRANSPORTATION, STATE OF ILLINOIS.

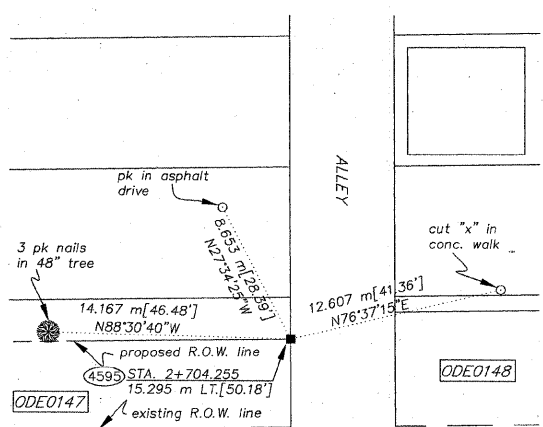
DATED AT JOLIET, ILLINOIS, THIS 15th DAY OF FEBRUARY 2007.

RONALD F. HODGEN P.L.S. NO. 2830
MY LICENSE EXPIRES 11-30-2008

METRIC PROJECT COORDINATES ARE GROUND VALUES AND CAN BE CONVERTED TO GRID VALUES BY MULTIPLYING THE PUBLISHED GROUND COORDINATES BY 0.9999988.

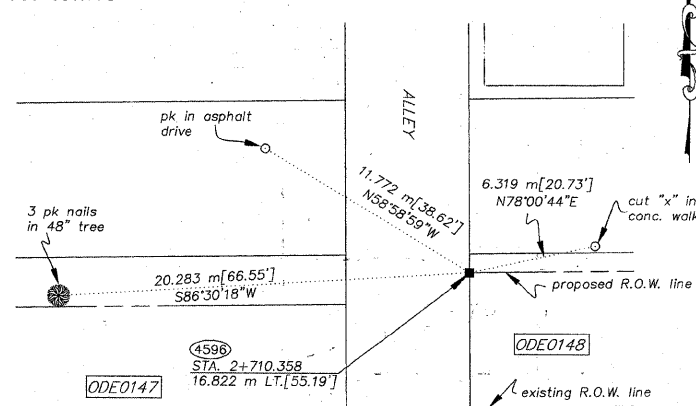
RUETTIGER, TONELLI & ASSOCIATES, INC.
Land Surveyors/Engineers/Planners/Landscape Architects/C.I.S. Consultants
2174 ONDIA STREET SUITE 170 2803 SOUTH WASHINGTON STREET SUITE 170
JOLIET, ILLINOIS 60435 MAPLEVIEW, ILLINOIS 60568
PH. (815) 744-6600 FAX (815) 744-0101 PH. (630) 420-7740 FAX (630) 420-7741

STA. 2+704.255
N.548020.270
E.357080.695



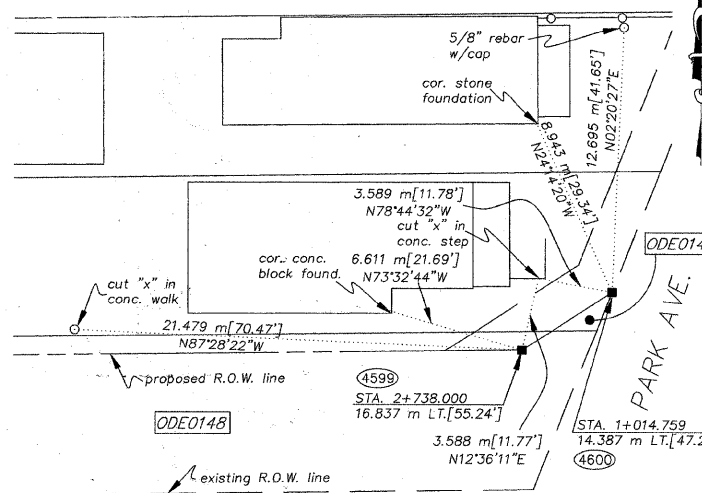
FAP 351 U.S. RTE. 6
(159th STREET)

STA. 2+710.358/16.822 m LT.
N.548021.874
E.357086.778



FAP 351 U.S. RTE. 6
(159th STREET)

STA. 2+738.000/16.837 m LT.
N.548022.240
E.357114.418



FAP 351 U.S. RTE. 6
(159th STREET)

BASIS OF BEARINGS IS THE ILLINOIS STATE PLANE COORDINATE SYSTEM, EAST ZONE, NAD 83
SHEET 1 IS A COVER SHEET AND IS NOT RECORDED.
SEE SHEETS 16-23 FOR COORDINATE DATA & REFERENCE TIES.

REVISION DATE	REVISION	MADE BY

PLAT OF HIGHWAYS
STATE OF ILLINOIS
DEPARTMENT OF TRANSPORTATION
FAP 351 U.S. RTE. 6 (159th ST.)
SECTION COOK COUNTY
PROJECT JOB NO. R90-011-99
STATION TO STATION
SCALE: N/A SHEET B20 OF B23
BUREAU OF LAND ACQUISITION
201 WEST CENTER COURT
SCHAUMBURG, ILLINOIS 60196

I:\2007\01\16\159th\159th.dwg, Layout, 1/30/07 8:52:37 AM, jfay