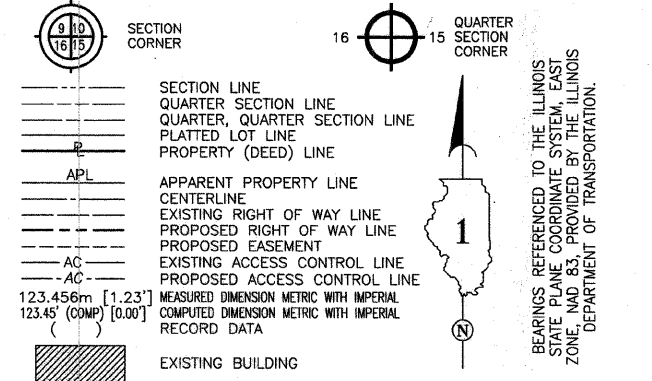


PROPOSED ROW TIE DIAGRAMS, FAP 351 (U.S. 6)

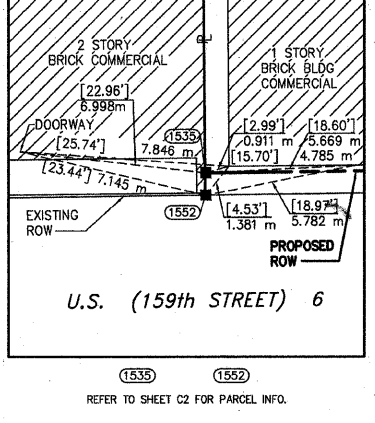
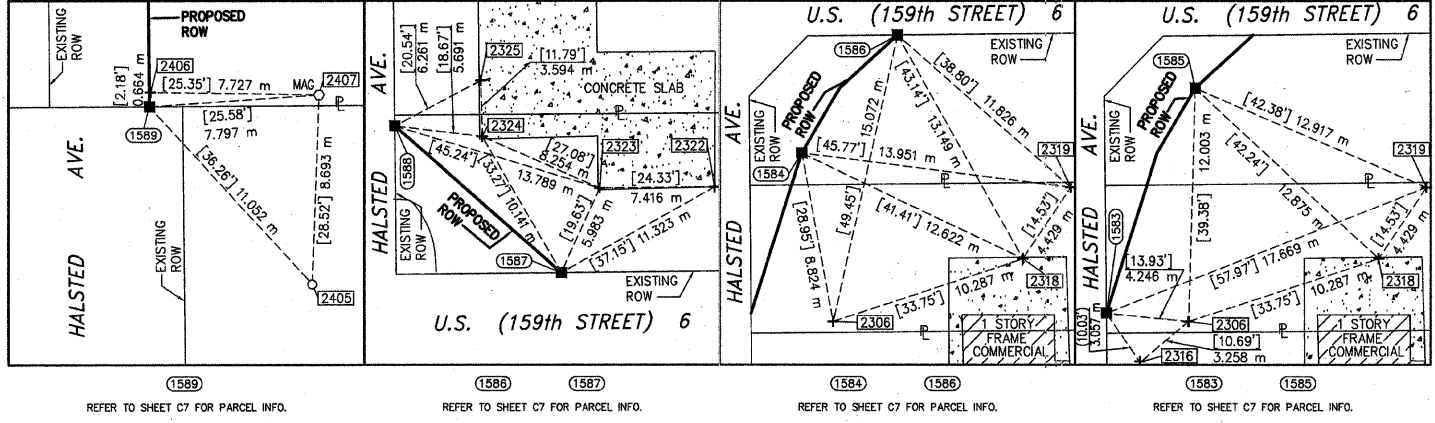
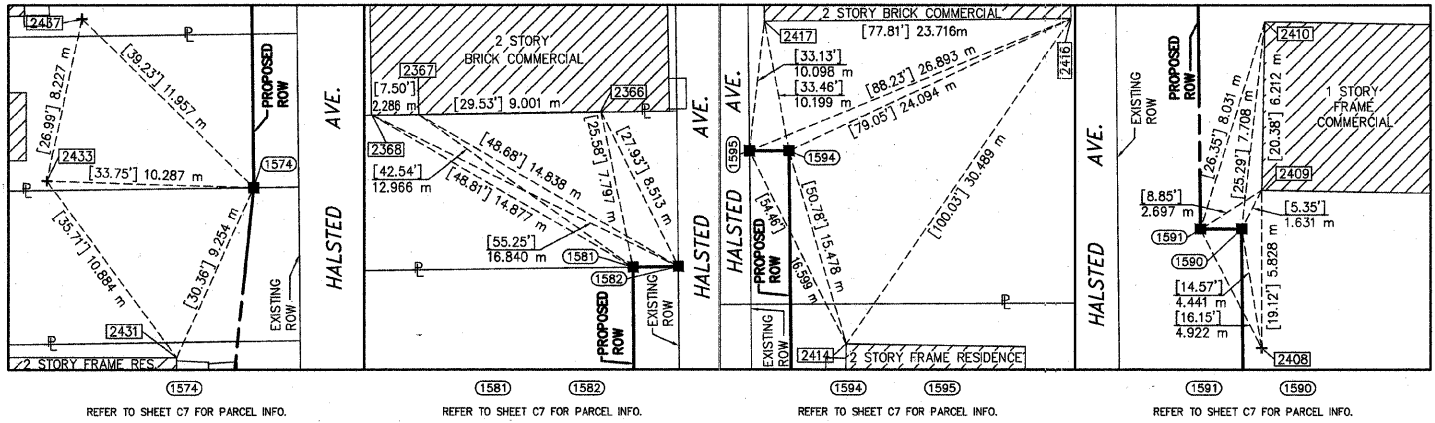
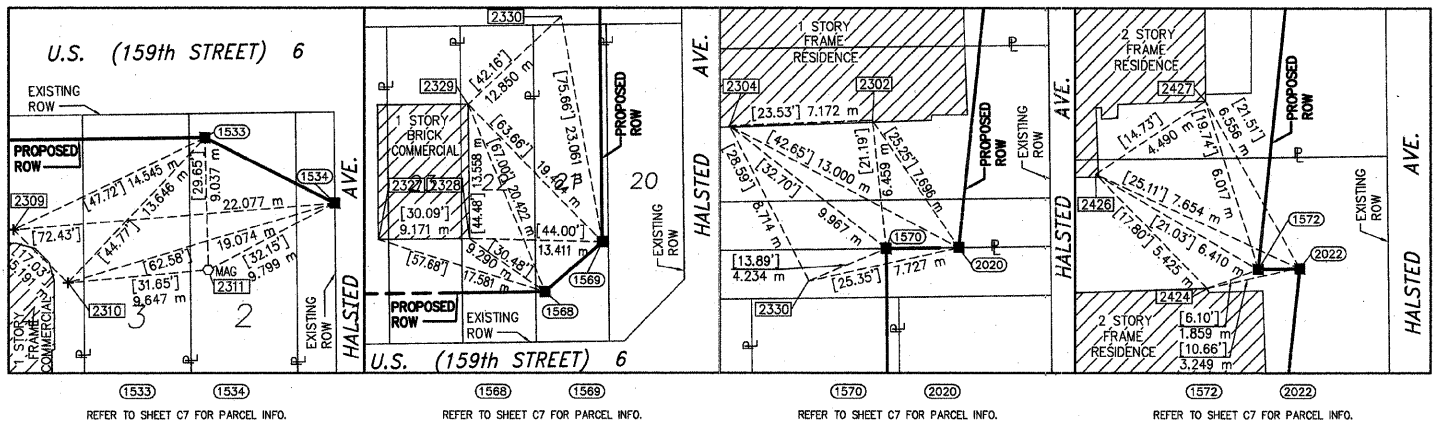
LEGEND



BEARINGS REFERENCED TO THE ILLINOIS STATE PLANE COORDINATE SYSTEM, EAST ZONE, NAD 83, PROVIDED BY THE ILLINOIS DEPARTMENT OF TRANSPORTATION.

COORDINATE VALUES  
METRIC PROJECT COORDINATES ARE GROUND VALUES AND CAN BE CONVERTED TO GRID VALUES BY MULTIPLYING THE PUBLISHED GROUND COORDINATES BY 0.999988, PROVIDED BY THE ILLINOIS DEPARTMENT OF TRANSPORTATION.

DATA POINT NO.	STATION	OFFSET	-N- COORDINATES	-E-
1583	0+970.776	15.240 m R	547,988.2245	358,116.1904
1584	0+978.990	17.920 m R	547,996.4639	358,118.7923
1585	0+982.304	19.914 m R	547,999.7960	358,120.7554
1586	0+984.976	22.909 m R	548,002.4962	358,123.7255
1570	1+044.499	18.300 m L	548,061.6146	358,081.9257
2021	1+044.506	15.266 m L	548,061.6526	358,084.9587
2022	1+058.376	13.074 m L	548,075.5444	358,087.0106
1572	1+058.373	14.481 m L	548,075.5267	358,085.6037
1574	1+077.423	12.300 m L	548,094.5974	358,087.5914
1589	1+118.664	13.716 m R	548,136.1009	358,113.1872
1590	1+143.000	13.716 m R	548,160.4355	358,112.9403
1591	1+143.007	12.192 m R	548,160.4266	358,111.4163
1594	1+175.000	12.192 m R	548,192.4183	358,111.0917
1595	1+175.018	9.144 m R	548,192.4057	358,108.0437
1581	1+176.453	12.300 m L	548,193.6231	358,086.5866
1582	1+176.459	10.059 m L	548,193.6513	358,088.8273
1552	3+139.118	10.181 m L	548,020.5519	357,515.5944
1535	3+139.121	11.004 m L	548,021.3748	357,515.5877
1568	3+700.000	15.259 m L	548,032.2929	358,076.3915
1533	3+700.000	16.746 m R	548,000.2908	358,076.7476
1569	3+705.837	20.200 m L	548,037.2992	358,082.1724
1534	3+708.840	21.300 m R	547,995.8352	358,085.6373
1588	3+739.381	24.985 m L	548,042.4570	358,115.6614
1587	3+750.000	15.415 m L	548,033.0059	358,126.3862

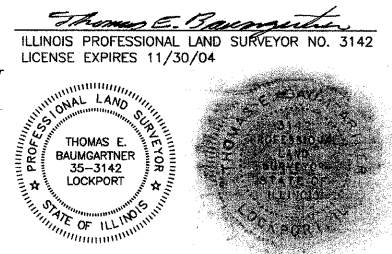


TIE #	DESCRIPTION
2302	W. EDGE GLASS BLOCK AT BASEMENT WINDOW
2304	W. EDGE GLASS BLOCK AT BASEMENT WINDOW
2306	CHISELED CROSS IN CONCRETE SLAB
2309	CHISELED CROSS IN WALK AT P.C., N. BLDG FACE
2310	CHISELED CROSS IN WALK AT P.T., W. BLDG FACE
2311	3 MAG NAILS IN ASPHALT PARKING LOT
2316	CHISELED CROSS IN CONCRETE SLAB
2318	CHISELED CROSS ON RAISED WALK AT N. END BLDG
2319	CHISELED CROSS N.E. CORNER SERVICE VAULT RIM
2322	CHISELED CROSS AT S.E. CORNER UNDERGROUND TANKS
2323	CHISELED CROSS AT S.W. CORNER UNDERGROUND TANKS
2324	CHISELED CROSS AT S.W. CORNER CONC. SLAB FOR PUMPS
2325	CHISELED CROSS AT W. EDGE CONC. SLAB AT 1ST PUMP N.
2327	S.W. CORNER BRICK BLDG
2328	S.E. CORNER BRICK BLDG
2329	N.E. CORNER BRICK BLDG
2330	TEMP WORK POINT
2431	N.E. CORNER BLOCK FOUNDATION
2433	CHISELED CROSS IN WALK AT S.E. CORNER GARAGE
2366	W. EDGE BRICK CUT OUT FOR BASEMENT WINDOW
2367	W. EDGE BRICK CUT OUT FOR BASEMENT WINDOW
2368	S.W. CORNER BRICK BLDG
2405	5/8" REBAR WITH YELLOW CAP
2406	CHISELED CROSS W. FACE END FENCE POST
2407	3 MAG NAILS S. EDGE ASPHALT LOT
2408	CHISELED CROSS W. EDGE GUARD POST AT GATE END
2409	S.W. CORNER CONCRETE FOUNDATION
2410	N.W. CORNER CONCRETE FOUNDATION
2414	N.W. CORNER CONCRETE LEDGE AT BASE OF STONE WALL
2416	N.W. CORNER CONCRETE LEDGE AT BASE OF STONE WALL
2417	N.W. CORNER CONCRETE LEDGE AT BASE OF STONE WALL
2424	N.E. CORNER BLOCK FOUNDATION
2426	S.E. CORNER BLOCK FOUNDATION AT JOG IN BLDG
2427	S.E. CORNER BLOCK FOUNDATION
2437	CHISELED CROSS NE CORNER CONC. SLAB AT STATION

STATE OF ILLINOIS } SS  
COUNTY OF WILL }

THIS IS TO CERTIFY THAT I, THOMAS E. BAUMGARTNER, AN ILLINOIS PROFESSIONAL LAND SURVEYOR, HAVE SURVEYED THE PLAT OF HIGHWAYS SHOWN HEREON BETWEEN SECTIONS 17 AND 20, TOWNSHIP 39 NORTH, RANGE 10 EAST, AND SECTIONS 16 AND 21, TOWNSHIP 39 NORTH, RANGE 10 EAST OF THE THIRD PRINCIPAL MERIDIAN, COOK COUNTY; THAT THE SURVEY IS TRUE AND COMPLETE AS SHOWN TO THE BEST OF MY KNOWLEDGE AND BELIEF; THAT THE PLAT CORRECTLY REPRESENTS SAID SURVEY; THAT ALL MONUMENTS FOUND AND ESTABLISHED ARE OF PERMANENT QUALITY AND OCCUPY THE POSITIONS SHOWN THEREON AND THAT THE MONUMENTS ARE SUFFICIENT TO ENABLE THE SURVEY TO BE RETRACED. MADE FOR THE DEPARTMENT OF TRANSPORTATION, STATE OF ILLINOIS. DATED AT LOCKPORT, ILLINOIS THIS 26TH DAY OF MARCH 2002 A.D.

Baird & Company  
- LAND SURVEYORS -  
AT THE HISTORIC RAILROAD DEPOT  
133 WEST THIRTEENTH STREET  
LOCKPORT, ILLINOIS 60441



PLAT OF HIGHWAYS  
STATE OF ILLINOIS  
DEPARTMENT OF TRANSPORTATION  
ROUTE FAP 351 (U.S. 6)  
SECTION PROJECT STATION SCALE: NO SCALE  
COOK COUNTY JOB NO. R-90-011-99 TO STATION SHEET C22 OF

BUREAU OF LAND ACQUISITION  
201 WEST CENTER COURT  
SCHAUMBURG, ILLINOIS 60196-1096

PRINTING DATE: JANUARY 22, 2003 ~ RWJ