



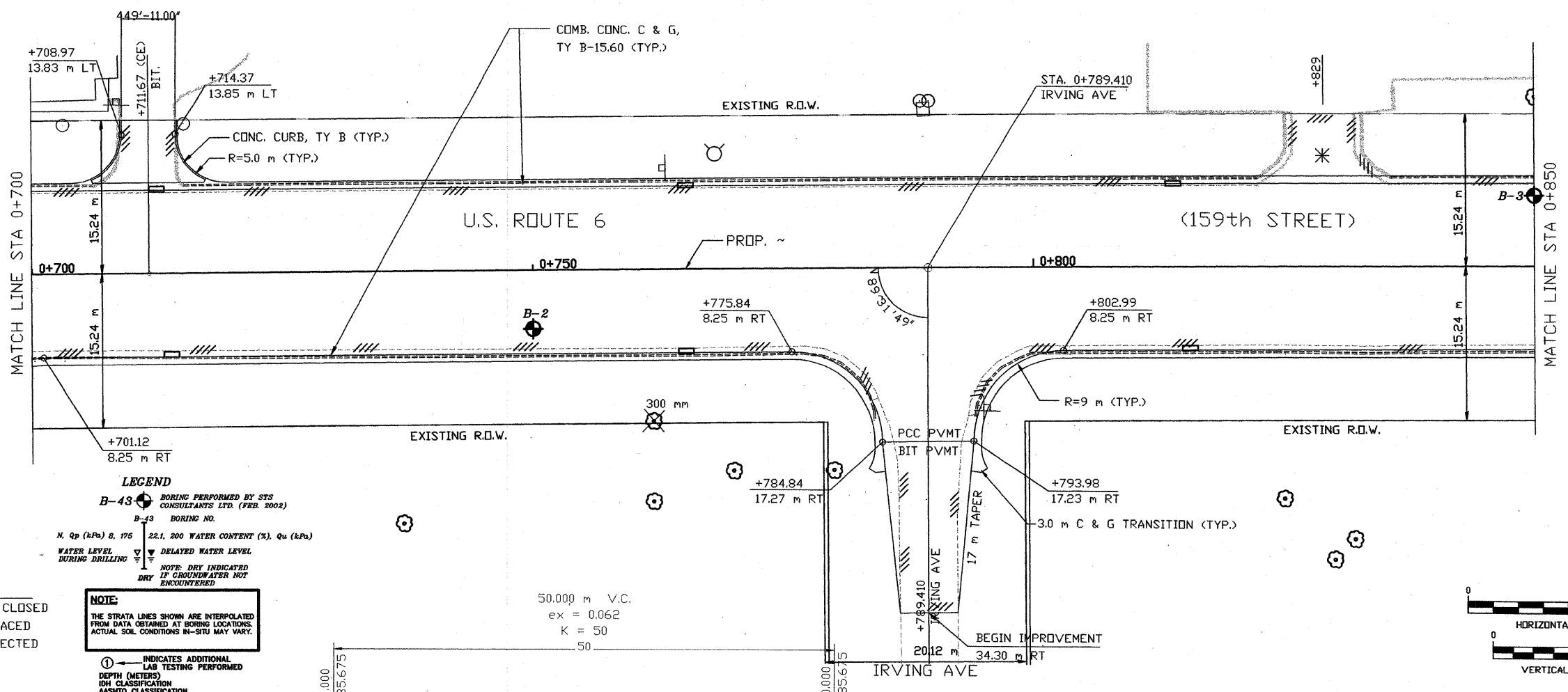
STS Consultants Ltd.
Consulting Engineers
STS PROJECT NO.: 32646

DRAWN BY: CJD 4-10-02
CHECKED BY: SEK 4-10-02
APPROVED BY: TDB 4-10-02

F.A. RTE.	SECTION	COUNTY	TOTAL SHEETS	SHEET NO.
351	3277R	COOK	541	236
STA. 0+700		TO STA. 0+850		
FED. ROAD DIST. NO.		ILLINOIS FED. AID PROJECT		

DATE	BY

DATE	BY



LEGEND

B-43 BORING PERFORMED BY STS CONSULTANTS LTD. (FEB. 2002)

B-43 BORING NO.

N. Qp (kPa) 8, 175 22.1, 200 WATER CONTENT (%), Qu (kPa)

WATER LEVEL DURING DRILLING DELAYED WATER LEVEL

NOTE: DRY INDICATED IF GROUNDWATER NOT ENCOUNTERED

LEGEND:

✱ DRIVEWAY TO BE CLOSED

⊗ TREE TO BE REPLACED

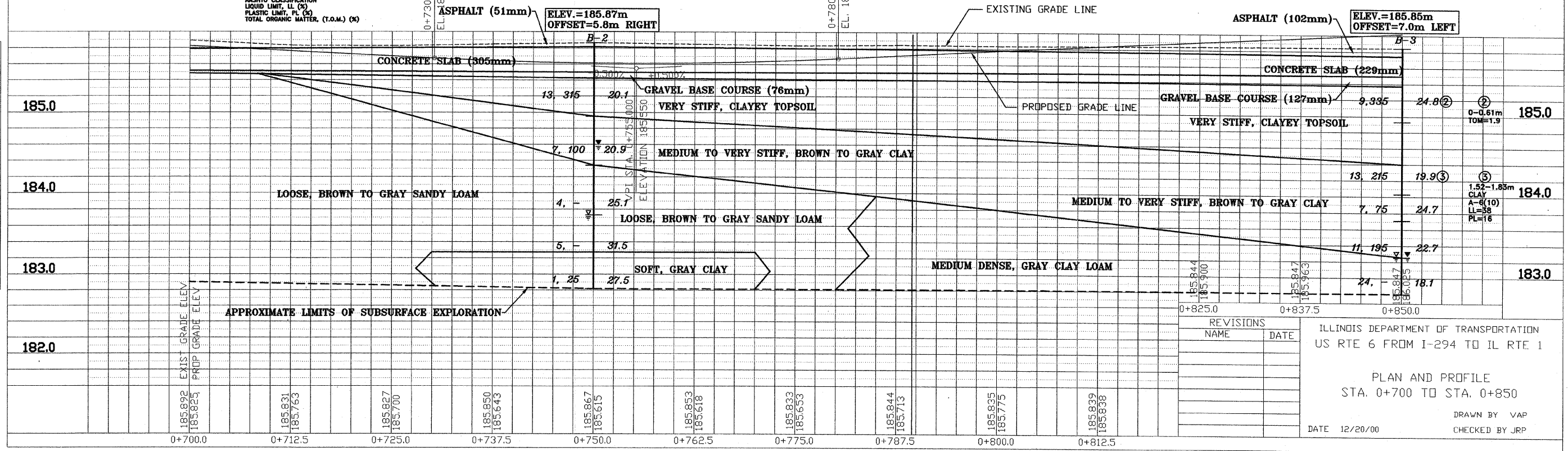
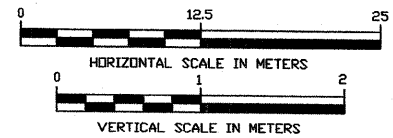
⊕ TREE TO BE PROTECTED

/// REMOVAL

NOTE:

THE STRATA LINES SHOWN ARE INTERPOLATED FROM DATA OBTAINED AT BORING LOCATIONS. ACTUAL SOIL CONDITIONS IN-SITU MAY VARY.

50.000 m V.C.
ex = 0.062
K = 50
50



REVISIONS	NAME	DATE

ILLINOIS DEPARTMENT OF TRANSPORTATION
US RTE 6 FROM I-294 TO IL RTE 1

PLAN AND PROFILE
STA. 0+700 TO STA. 0+850

DATE 12/20/00

DRAWN BY VAP
CHECKED BY JRP

X:\PROJECTS\32646\PROFILES\0+700_0+850.dwg
04/09/2002 21:59