

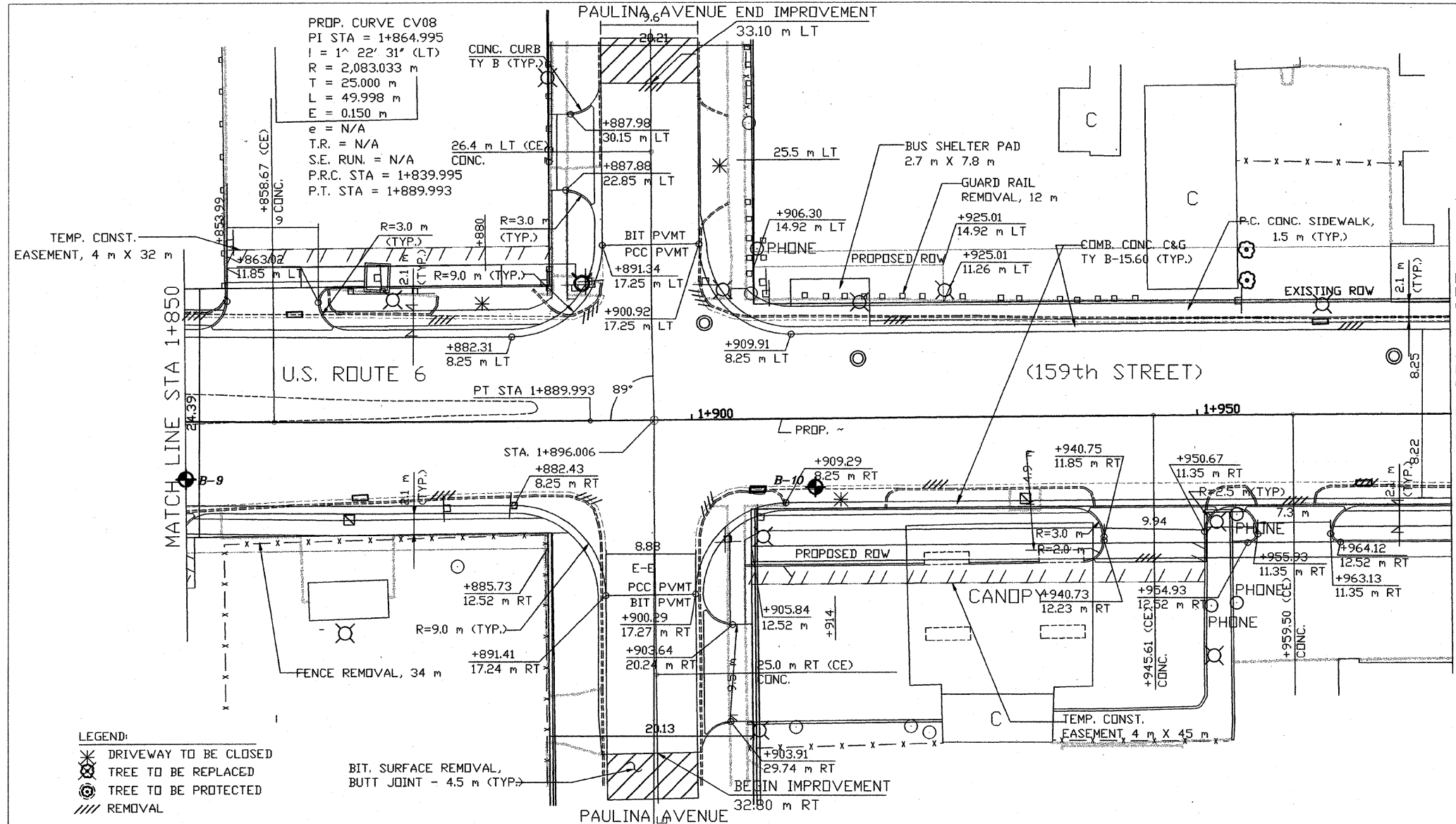


STS Consultants Ltd.
Consulting Engineers
STS PROJECT NO.: 32646

DRAWN BY: CJD 4-10-02
CHECKED BY: SEK 4-10-02
APPROVED BY: TDB 4-10-02

BY	DATE
FINAL SURVEYED	
SURVEY PLOTTED	
NOTE BOOK TEMPLATE	
AREAS CHECKED	
NO.	

BY	DATE
ORIGINAL SURVEYED	
SURVEY PLOTTED	
NOTE BOOK TEMPLATE	
AREAS CHECKED	
NO.	



LEGEND:

- ✖ DRIVEWAY TO BE CLOSED
- ⊗ TREE TO BE REPLACED
- ⊙ TREE TO BE PROTECTED
- /// REMOVAL

BIT, SURFACE REMOVAL,
BUTT JOINT - 4.5 m (TYP.)

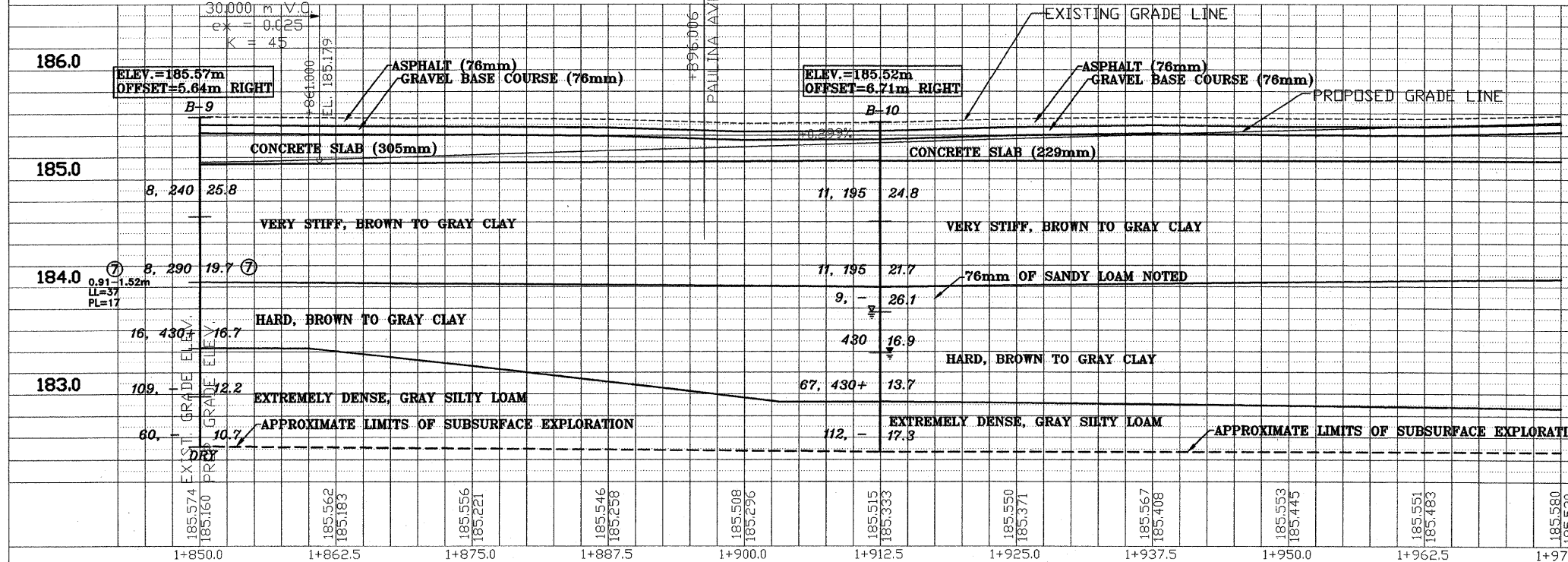
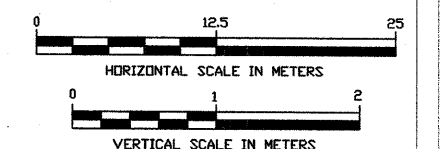
F.A. RTE.	SECTION	COUNTY	TOTAL SHEETS NO.	SHEET NO.
351	3277R	COOK	541	244
STA. 1+850		TO STA. 1+975		
FED. ROAD DIST. NO.		ILLINOIS		FED. AID PROJECT

LEGEND

- B-43 BORING PERFORMED BY STS CONSULTANTS LTD. (FEB. 2002)
- B-45 BORING NO.
- N, Qp (kPa) 8, 175 22.1, 200 WATER CONTENT (%), Qu (kPa)
- WATER LEVEL DURING DRILLING
- DELATED WATER LEVEL
- NOTE: DRY INDICATED IF GROUNDWATER NOT ENCOUNTERED

NOTE:
THE STRATA LINES SHOWN ARE INTERPOLATED FROM DATA OBTAINED AT BORING LOCATIONS. ACTUAL SOIL CONDITIONS IN-SITU MAY VARY.

- ① INDICATES ADDITIONAL LAB TESTING PERFORMED
- DEPTH (METERS)
- UIC CLASSIFICATION
- AASHTO CLASSIFICATION
- LIQUID LIMIT, LL (%)
- PLASTIC LIMIT, PL (%)
- TOTAL ORGANIC MATTER, (T.O.M.) (%)



REVISIONS	NAME	DATE

ILLINOIS DEPARTMENT OF TRANSPORTATION
US RTE 6 FROM I-294 TO IL RTE 1
PLAN AND PROFILE
STA. 1+850 TO STA. 1+975
DATE 12/20/00
DRAWN BY VAP
CHECKED BY JRP

X:\PROJECTS\32646\PROFILES\1+850 TO 1+975.dwg 04/09/2002 22:15