



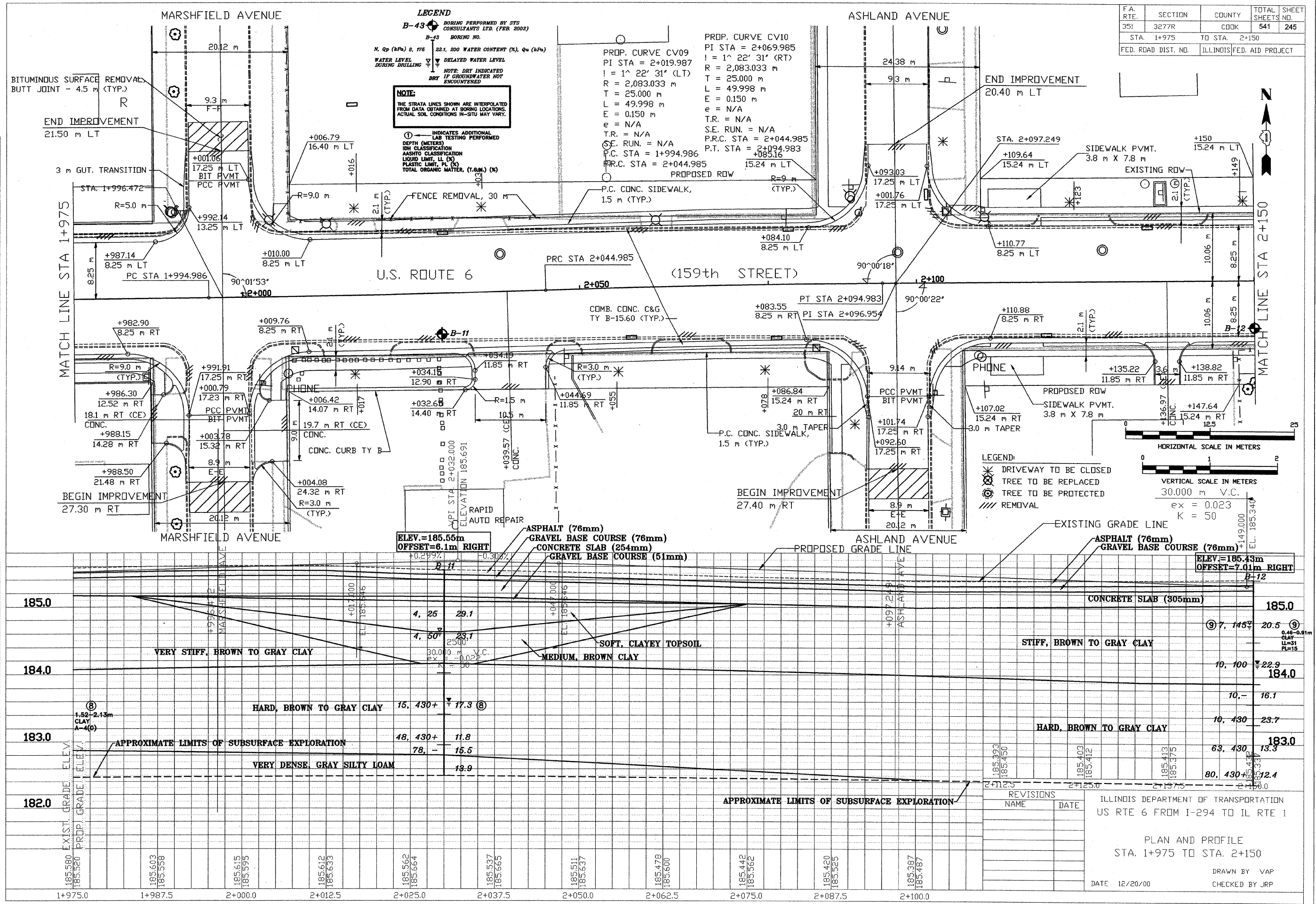
STS Consultants Ltd.
Consulting Engineers
STS PROJECT NO.: 32646

| | | |
|-------------|-----|---------|
| DRAWN BY | CJD | 4-10-02 |
| CHECKED BY | SEK | 4-10-02 |
| APPROVED BY | TDB | 4-10-02 |

| | |
|--------------------|------|
| BY | DATE |
| FINAL SURVEYED | |
| SURVEY PLOTTED | |
| NOTE BOOK TEMPLATE | |
| AREAS CHECKED | |

| | |
|--------------------|------|
| BY | DATE |
| ORIGINAL SURVEYED | |
| SURVEY PLOTTED | |
| NOTE BOOK TEMPLATE | |
| AREAS CHECKED | |

X:\PROJECTS\12046\PROFILES
04/09/2002 22:16



LEGEND
B-43 BORING PERFORMED BY STS CONSULTANTS LTD. (FEB. 2002)
B-43 BORING NO.
N, Qp (kPa) 8, 175 22.1, 200 WATER CONTENT (%), Qw (kPa)
WATER LEVEL DURING DRILLING
DELAYED WATER LEVEL
NOTE: DRY INDICATED IF GROUNDWATER NOT ENCOUNTERED
DRY

NOTE:
THE STRATA LINES SHOWN ARE INTERPOLATED FROM DATA OBTAINED AT BORING LOCATIONS. ACTUAL SOIL CONDITIONS IN-SITU MAY VARY.

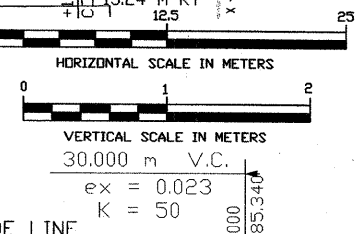
① INDICATES ADDITIONAL LAB TESTING PERFORMED
DEPTH (METERS)
SOIL CLASSIFICATION
ASHTO CLASSIFICATION
LIQUID LIMIT, LL (%)
PLASTIC LIMIT, PL (%)
TOTAL ORGANIC MATTER, (T.O.M.) (%)

PROP. CURVE CV09
PI STA = 2+019.987
I = 1° 22' 31" (RT)
R = 2,083.033 m
T = 25,000 m
L = 49,998 m
E = 0.150 m
e = N/A
T.R. = N/A
S.E. RUN. = N/A
P.C. STA = 1+994.986
P.R.C. STA = 2+044.985

PROP. CURVE CV10
PI STA = 2+069.985
I = 1° 22' 31" (RT)
R = 2,083.033 m
T = 25,000 m
L = 49,998 m
E = 0.150 m
e = N/A
T.R. = N/A
S.E. RUN. = N/A
P.R.C. STA = 2+044.985
P.T. STA = 2+094.983

| | | | | |
|---------------------|---------------|--------|------------------|-----------|
| F.A. RTE. | SECTION | COUNTY | TOTAL SHEETS NO. | SHEET NO. |
| 351 | 3277R | COOK | 541 | 245 |
| STA. 1+975 | TO STA. 2+150 | | | |
| FED. ROAD DIST. NO. | ILLINOIS | | FED. AID PROJECT | |

LEGEND:
* DRIVEWAY TO BE CLOSED
⊗ TREE TO BE REPLACED
⊙ TREE TO BE PROTECTED
/// REMOVAL



| REVISIONS | NAME | DATE |
|-----------|------|------|
| | | |
| | | |

ILLINOIS DEPARTMENT OF TRANSPORTATION
US RTE 6 FROM I-294 TO IL RTE 1
PLAN AND PROFILE
STA. 1+975 TO STA. 2+150
DATE 12/20/00
DRAWN BY VAP
CHECKED BY JRP