



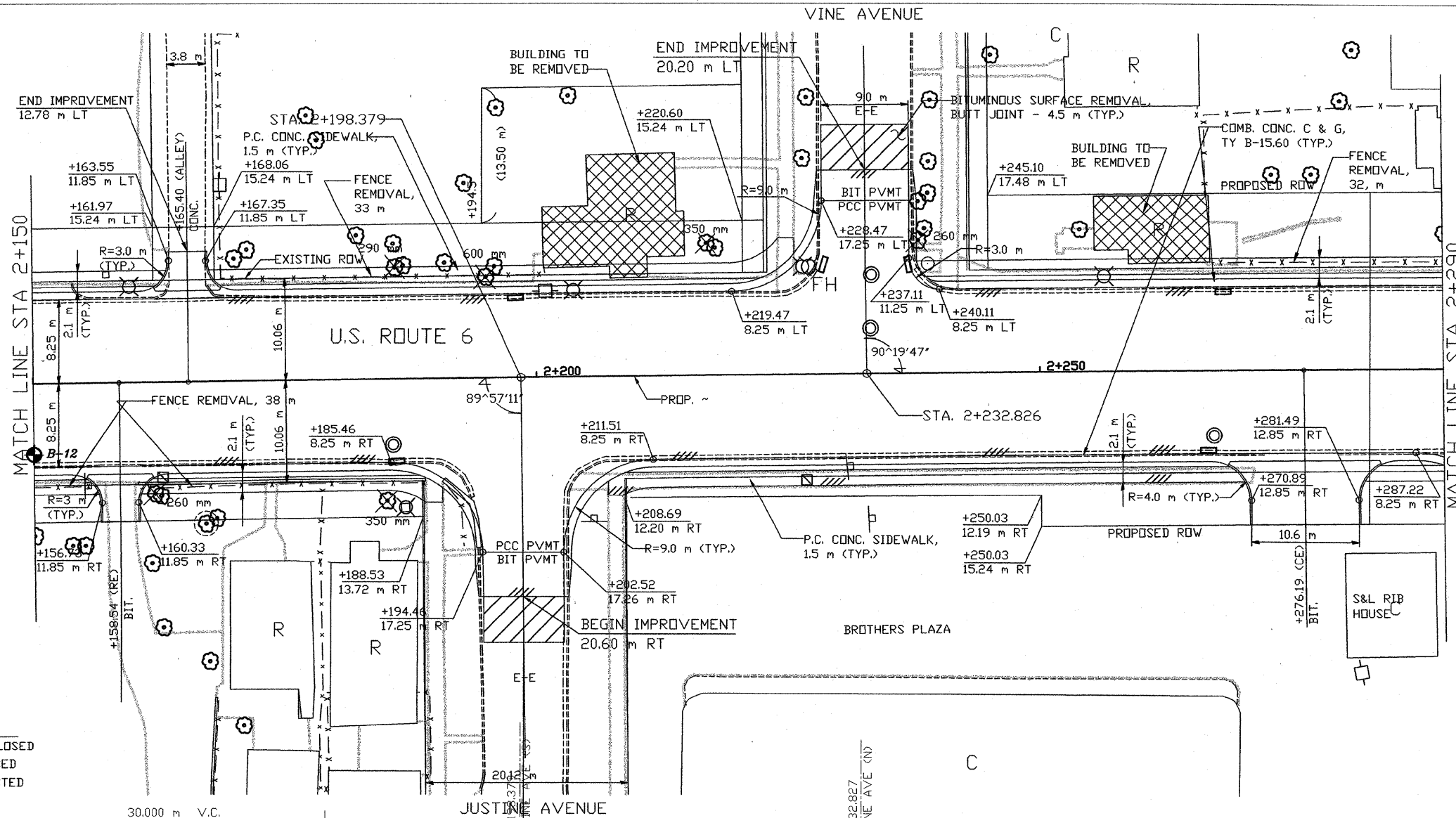
STS Consultants Ltd.  
Consulting Engineers  
STS PROJECT NO.: 32646

DRAWN BY	CJD	4-10-02
CHECKED BY	SEK	4-10-02
APPROVED BY	TDB	4-10-02

BY	DATE
FINAL SURVEY	
SURVEY PLOTTED	
NOTE BOOK TEMPLATE	
AREAS CHECKED	
NO.	

BY	DATE
ORIGINAL SURVEY	
SURVEY PLOTTED	
NOTE BOOK TEMPLATE	
AREAS CHECKED	
NO.	

SECTION 1226-46 PROFILES  
04/09/2002 22:19



- LEGEND:
- DRIVEWAY TO BE CLOSED
  - TREE TO BE REPLACED
  - TREE TO BE PROTECTED
  - REMOVAL

F.A. RTE.	SECTION	COUNTY	TOTAL SHEETS	SHEET NO.
351	3277R	COOK	541	246
STA. 2+150		TO STA. 2+290		
FED. ROAD DIST. NO.		ILLINOIS		FED. AID PROJECT



- LEGEND
- B-43 BORING PERFORMED BY STS CONSULTANTS LTD. (FEB. 2002)
  - B-43 BORING NO.
  - $N, Q_p$  (kPa) 8, 175
  - $22.1, 200$  WATER CONTENT (%),  $Q_u$  (kPa)
  - WATER LEVEL DURING DRILLING
  - DELAYED WATER LEVEL
  - NOTE: DRY INDICATED IF GROUNDWATER NOT ENCOUNTERED

NOTE:

THE STRATA LINES SHOWN ARE INTERPOLATED FROM DATA OBTAINED AT BORING LOCATIONS. ACTUAL SOIL CONDITIONS IN-SITU MAY VARY.

INDICATES ADDITIONAL LAB TESTING PERFORMED

DEPTH (METERS)

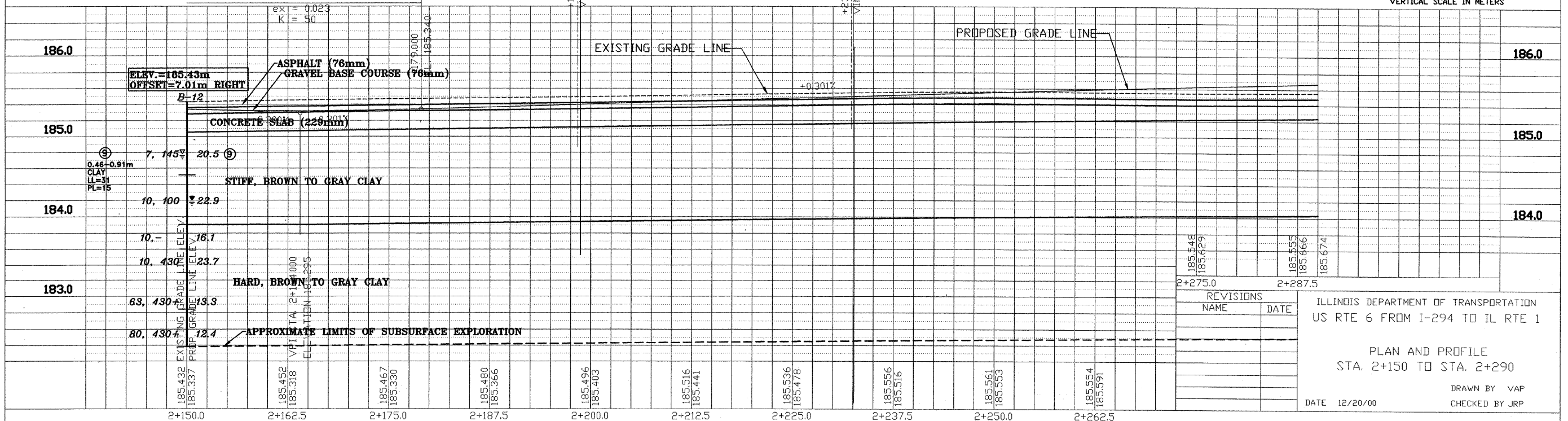
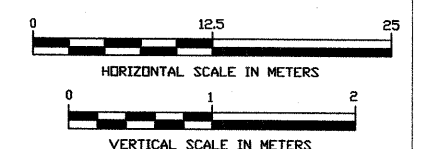
SOIL CLASSIFICATION

AASHTO CLASSIFICATION

LIQUID LIMIT, LL (%)

PLASTIC LIMIT, PL (%)

TOTAL ORGANIC MATTER, (T.O.M.) (%)



REVISIONS	NAME	DATE

ILLINOIS DEPARTMENT OF TRANSPORTATION  
US RTE 6 FROM I-294 TO IL RTE 1

PLAN AND PROFILE  
STA. 2+150 TO STA. 2+290

DATE 12/20/00

DRAWN BY VAP  
CHECKED BY JRP