



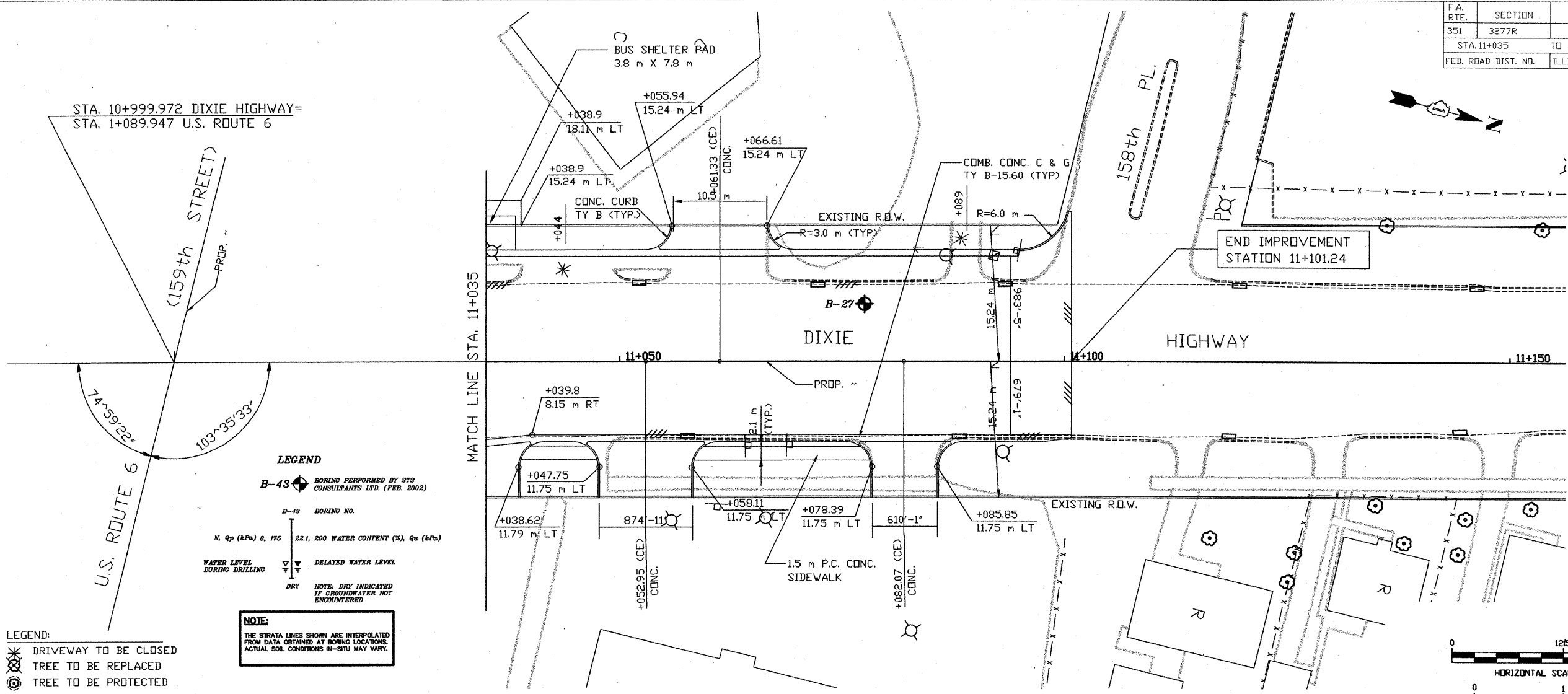
STS Consultants Ltd.  
Consulting Engineers

STS PROJECT NO.: 32646

DRAWN BY: CJD 4-16-02  
CHECKED BY: SEK 4-16-02  
APPROVED BY: TDB 4-16-02

BY	DATE
FINAL SURVEYED	
SURVEY PLOTTED	
NOTE BOOK TEMPLATE	
AREAS CHECKED	
NO.	

F.A. RTE.	SECTION	COUNTY	TOTAL SHEETS	SHEET NO.
351	3277R	COOK	541	258
STA. 11+035		TO STA. 11+101.24		
FED. ROAD DIST. NO.		ILLINOIS FED. AID PROJECT		



**LEGEND**

B-43 BORING PERFORMED BY STS CONSULTANTS LTD. (FEB. 2002)

B-43 BORING NO.

N, Qp (kPa) 8, 176 22.1, 200 WATER CONTENT (%), Qu (kPa)

WATER LEVEL DURING DRILLING

DELAYED WATER LEVEL

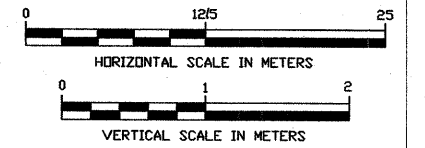
DRY NOTE: DRY INDICATED IF GROUNDWATER NOT ENCOUNTERED

**LEGEND:**

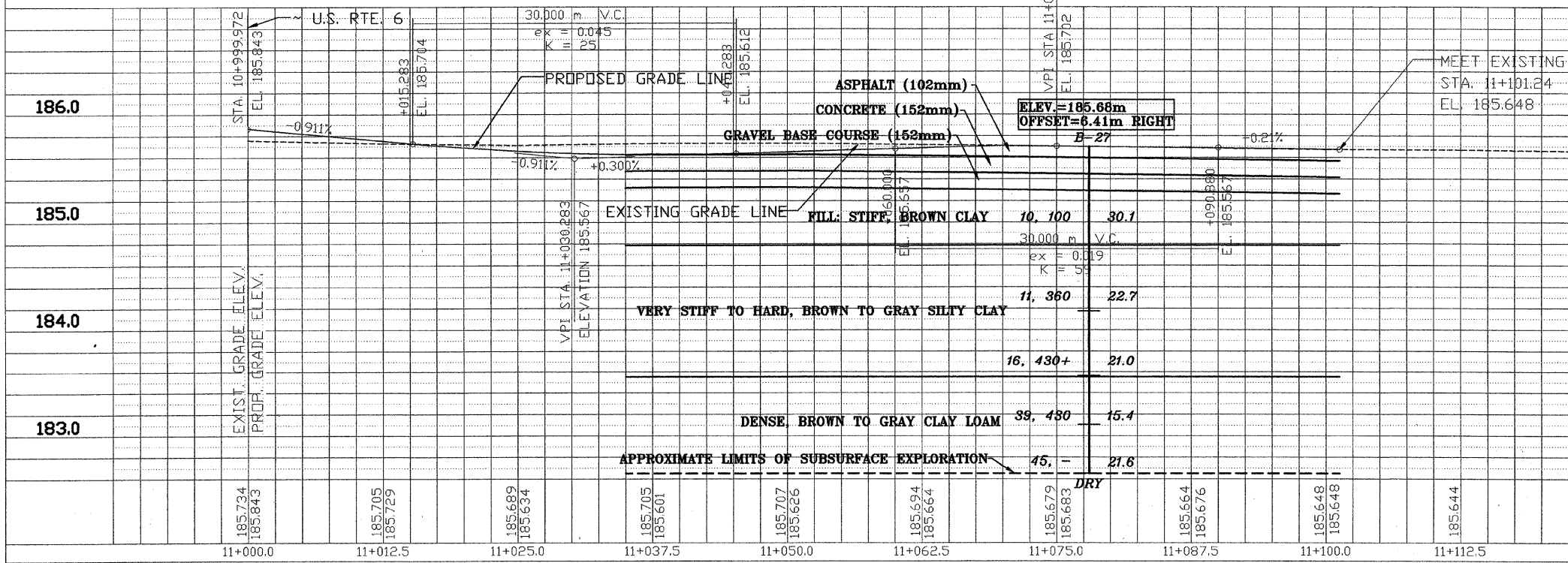
- DRIVEWAY TO BE CLOSED
- TREE TO BE REPLACED
- TREE TO BE PROTECTED
- REMOVAL

**NOTE:**

THE STRATA LINES SHOWN ARE INTERPOLATED FROM DATA OBTAINED AT BORING LOCATIONS. ACTUAL SOIL CONDITIONS IN-SITU MAY VARY.



BY	DATE
ORIGINAL SURVEYED	
SURVEY PLOTTED	
NOTE BOOK TEMPLATE	
AREAS CHECKED	
NO.	



REVISIONS	
NAME	DATE

ILLINOIS DEPARTMENT OF TRANSPORTATION  
US RTE 6 FROM I-294 TO IL RTE 1  
DIXIE HIGHWAY  
PLAN AND PROFILE  
STA. 11+035 TO STA. 11+101.24

DATE 12/20/00

DRAWN BY VAP  
CHECKED BY JRP

X:\PROJECTS\32646\PROFILES\11+035-11+101.24.dwg  
04/09/2002 22:46