



STS Consultants Ltd.  
Consulting Engineers  
STS PROJECT NO.: 32646

DRAWN BY	CJD	4-10-02
CHECKED BY	SEK	4-10-02
APPROVED BY	TDB	4-10-02

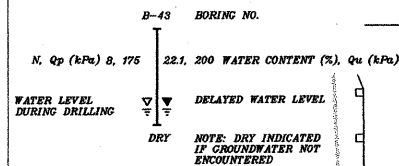
BY	DATE
FINAL SURVEYED	
SURVEY PLOTTED	
NOTE BOOK TEMPLATE	
AREAS CHECKED	
NO.	

BY	DATE
ORIGINAL SURVEYED	
SURVEY PLOTTED	
NOTE BOOK TEMPLATE	
AREAS CHECKED	
NO.	

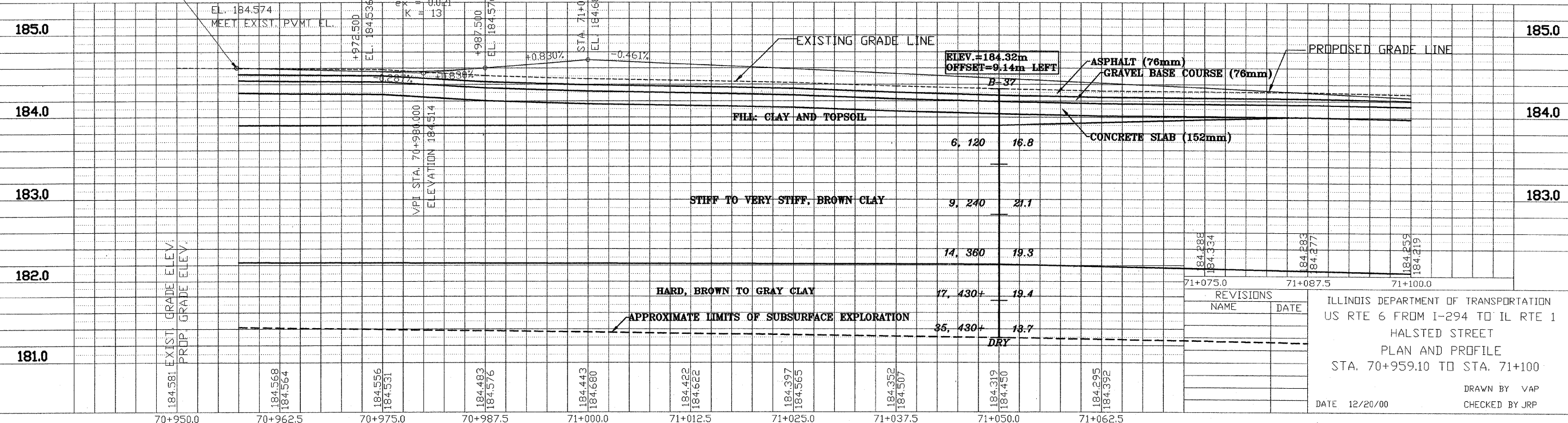
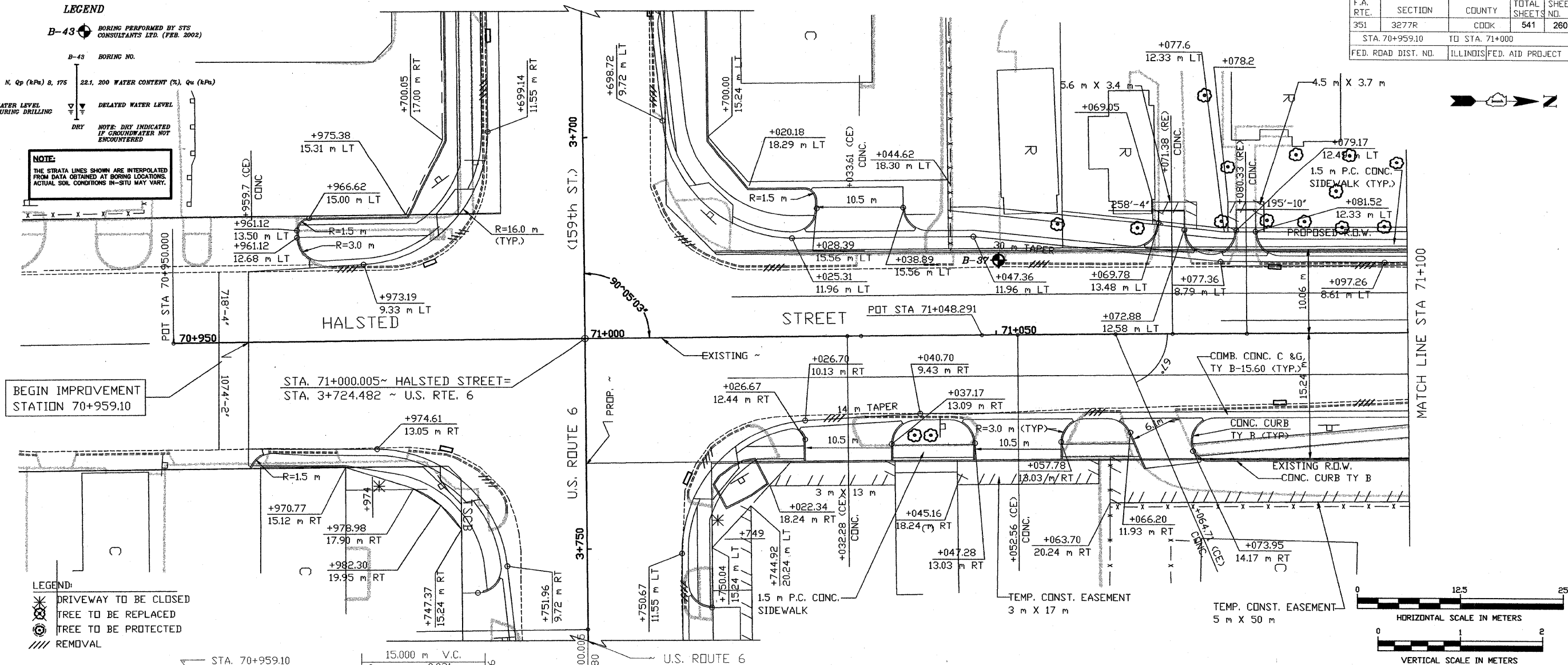
X:\PROJECTS\132646\PROFILES\70+959.10\_71+100.dwg  
04/10/2002 13:40

**LEGEND**

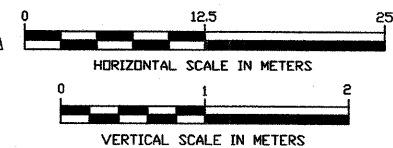
B-43 BORING PERFORMED BY STS CONSULTANTS LTD. (FEB. 2002)



**NOTE:**  
THE STRATA LINES SHOWN ARE INTERPOLATED FROM DATA OBTAINED AT BORING LOCATIONS. ACTUAL SOIL CONDITIONS IN-SITU MAY VARY.



F.A. RTE.	SECTION	COUNTY	TOTAL SHEETS	SHEET NO.
351	3277R	COOK	541	260
STA. 70+959.10		TD STA. 71+000		
FED. ROAD DIST. NO.		ILLINOIS FED. AID PROJECT		



REVISIONS	NAME	DATE

ILLINOIS DEPARTMENT OF TRANSPORTATION  
US RTE 6 FROM I-294 TO IL RTE 1  
HALSTED STREET  
PLAN AND PROFILE  
STA. 70+959.10 TO STA. 71+100  
DRAWN BY VAP  
CHECKED BY JRP  
DATE 12/20/00