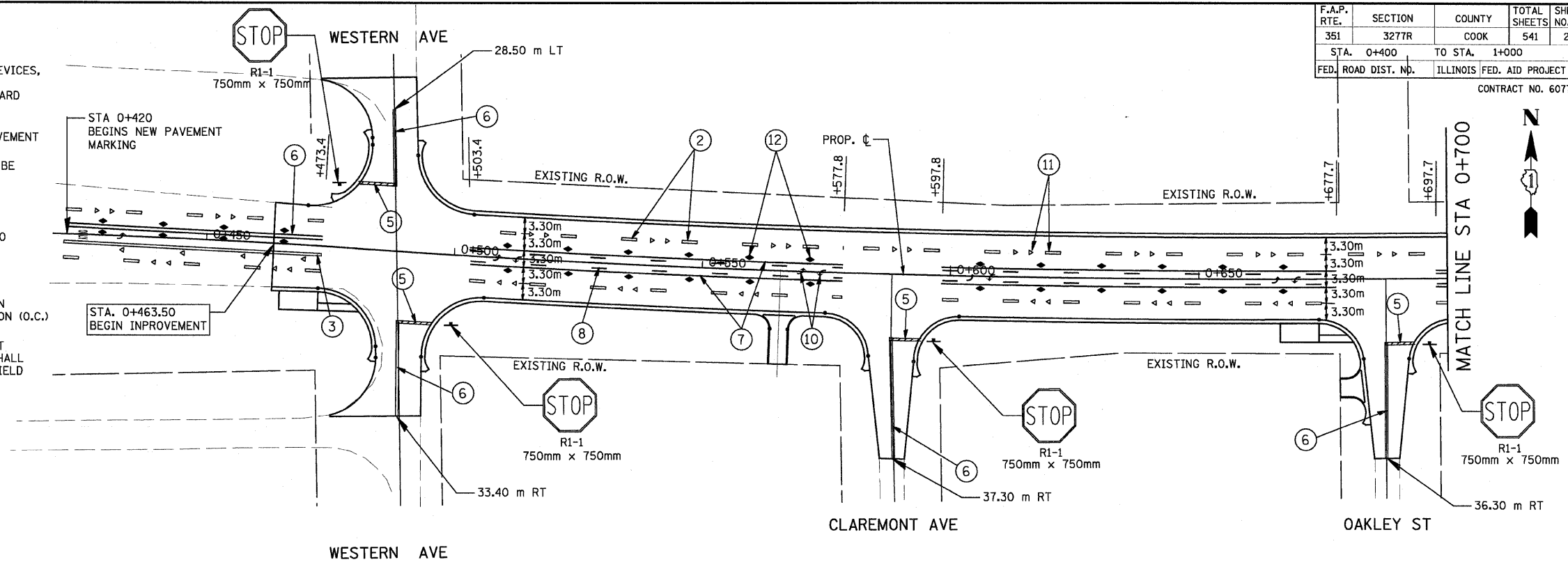


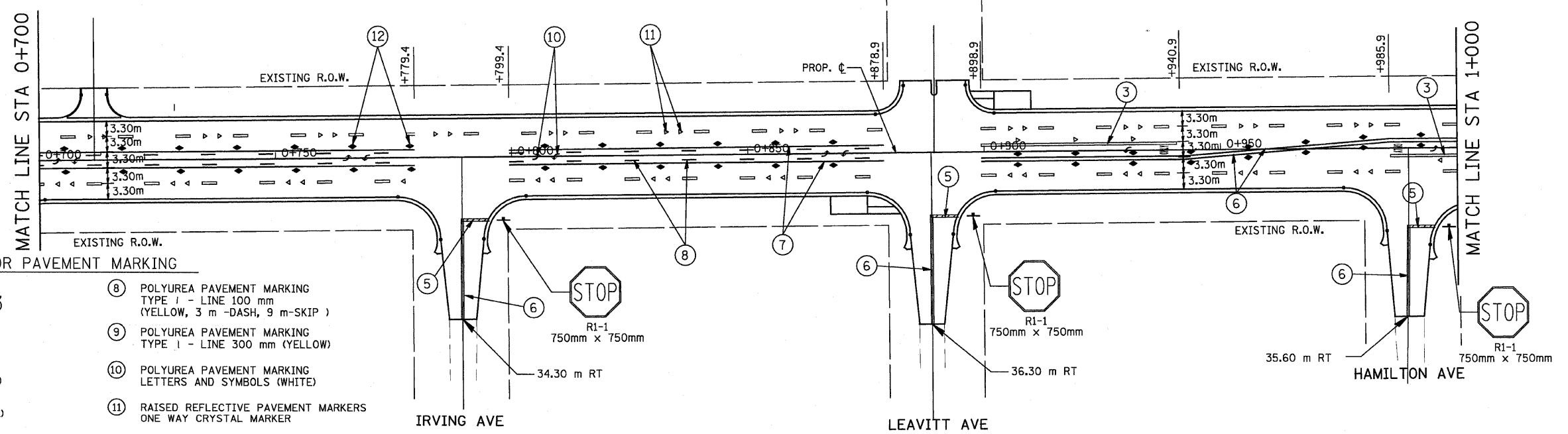
F.A.P. RTE.	SECTION	COUNTY	TOTAL SHEETS	SHEET NO.
351	3277R	COOK	541	276
STA. 0+400		TO STA. 1+000		
FED. ROAD DIST. NO.		ILLINOIS FED. AID PROJECT		
CONTRACT NO. 60774				

- PAVEMENT MARKING NOTES:**
- PAVEMENT MARKING AND RAISED REFLECTIVE MARKERS SHALL BE IN CONFORMANCE WITH THE ILL. MANUAL ON UNIFORM TRAFFIC CONTROL DEVICES, HIGHWAY STANDARDS 780001, DISTRICT 1 STANDARDS, THE PLAN DETAILS AND THE STANDARD SPECIFICATIONS FOR TRAFFIC CONTROL ITEMS.
 - ALL FINAL PAVEMENT MARKING MATERIALS TO BE USED ON CONCRETE AND BITUMINOUS PAVEMENT SHALL BE POLYUREA PAVEMENT MARKING.
 - ALL FINAL PAVEMENT MARKING SYMBOLS SHALL BE OF LARGE SIZE.
 - ALL 100mm EDGE LINES SHALL TERMINATE WHEN THEY MEET BARRIER CURBING EXCEPT WHERE OTHERWISE INDICATED IN THE PLANS.
 - RAISED REFLECTIVE MARKERS USED ADJACENT TO SOLID LINES SHALL BE OFFSET 51mm TO 76mm TOWARDS TRAFFIC AS SHOWN AND SPACED AT 12.190m ON CENTER (O.C.) EXCEPT WHERE OTHERWISE NOTED IN THE PLANS.
 - RAISED REFLECTIVE MARKERS USED WITH BROKEN (DASHED) LINES SHALL BE SPACED AT 24.38 m ON (O.C.) IN THE GAP BETWEEN SEGMENTS.
 - TWO WEEKS PRIOR TO PLACEMENT OF PERMANENT PAVEMENT MARKINGS THE RESIDENT ENGINEER SHALL CONTACT MS. PATRICE HARRIS, AREA TRAFFIC FIELD TECHNICIAN, AT (708) 597-9800.



U.S. ROUTE 6

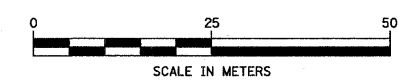
NOTE: ALL SIGNS TO BE MOUNTED ON TELESCOPING STEEL SUPPORTS



LEGEND FOR PAVEMENT MARKING

- | | |
|--------------------------------------------------------------------------------------|---------------------------------------------------------------------------------------|
| ① POLYUREA PAVEMENT MARKING
TYPE I - LINE 100mm (WHITE) | ⑧ POLYUREA PAVEMENT MARKING
TYPE I - LINE 100 mm
(YELLOW, 3 m -DASH, 9 m-SKIP) |
| ② POLYUREA PAVEMENT MARKING
TYPE I - LINE 100mm
(WHITE, 3m-DASH, 9m-SKIP) | ⑨ POLYUREA PAVEMENT MARKING
TYPE I - LINE 300 mm (YELLOW) |
| ③ POLYUREA PAVEMENT MARKING
TYPE I - LINE 150mm (WHITE) | ⑩ POLYUREA PAVEMENT MARKING
LETTERS AND SYMBOLS (WHITE) |
| ④ POLYUREA PAVEMENT MARKING
TYPE I - LINE 300mm (WHITE) | ⑪ RAISED REFLECTIVE PAVEMENT MARKERS
ONE WAY CRYSTAL MARKER |
| ⑤ POLYUREA PAVEMENT MARKING
TYPE I - LINE 600mm (WHITE) | ⑫ RAISED REFLECTIVE PAVEMENT MARKERS
TWO WAY AMBER MARKER |
| ⑥ POLYUREA PAVEMENT MARKING
TYPE I - LINE 100mm (YELLOW, 2-100mm
ø 280 mm C/C) | ⑬ POLYUREA PAVEMENT MARKING
TYPE A - LINE 150 mm
(WHITE, 0.6m-DASH, 1.8 m-SKIP) |
| ⑦ POLYUREA PAVEMENT MARKING
TYPE I - LINE 100mm (YELLOW SOLID) | ⑭ RAISED REFLECTIVE PAVEMENT MARKERS
ONE WAY AMBER MARKER |

U.S. ROUTE 6



REVISIONS	
NAME	DATE

ILLINOIS DEPARTMENT OF TRANSPORTATION
 US RTE 6 FROM I-294 TO IL RTE 1
 PAVEMENT MARKING AND SIGNING PLAN
 STA. 0+400 TO STA. 1+000
 LS-01
 DATE 01/28/09
 DRAWN BY TWR
 CHECKED BY NAP

URS 100 S. WACKER DR., SUITE 500
 CHICAGO, ILLINOIS 60606
 TEL. (312) 939-1000
 FAX (312) 939-4198