

SCHEDULE OF QUANTITIES

PAY ITEM	UNIT	QUANTITY
HANDHOLE	EACH	7
HEAVY-DUTY HANDHOLE	EACH	4
DOUBLE HANDHOLE	EACH	1
FULL-ACTUATED CONTROLLER AND TYPE V CABINET(SPECIAL)	EACH	1
TRANSCEIVER-FIBER OPTIC	EACH	1
TRAFFIC SIGNAL BACKPLATE	EACH	12
INDUCTIVE LOOP DETECTOR	EACH	13
*LIGHT DETECTOR	EACH	2
*LIGHT DETECTOR AMPLIFIER	EACH	1
PEDESTRIAN PUSH-BUTTON	EACH	2
TEMPORARY TRAFFIC SIGNAL INSTALLATION	EACH	1
REMOVE EXISTING TRAFFIC SIGNAL EQUIPMENT	EACH	1
REMOVE EXISTING HANDHOLE	EACH	8
REMOVE EXISTING CONCRETE FOUNDATION	EACH	9
SIGN PANEL - TYPE 1	SQ M	1.4
SIGN PANEL - TYPE 2	SQ M	2.1
CONDUIT IN TRENCH, 50MM DIA., GALVANIZED STEEL	METER	240
CONDUIT IN TRENCH, 65MM DIA., GALVANIZED STEEL	METER	28
CONDUIT IN TRENCH, 100MM DIA., GALVANIZED STEEL	METER	3
CONDUIT PUSHED, 50MM DIA., GALVANIZED STEEL	METER	92
CONDUIT PUSHED, 100MM DIA., GALVANIZED STEEL	METER	103
CONDUIT PUSHED, 125MM DIA., GALVANIZED STEEL	METER	47
TRENCH AND BACKFILL FOR ELECTRICAL WORK	METER	12
ELECTRIC CABLE IN CONDUIT, SIGNAL NO. 14 2C	METER	171
ELECTRIC CABLE IN CONDUIT, SIGNAL NO. 14 3C	METER	173
ELECTRIC CABLE IN CONDUIT, SIGNAL NO. 14 5C	METER	456
ELECTRIC CABLE IN CONDUIT, SIGNAL NO. 14 7C	METER	863
ELECTRIC CABLE IN CONDUIT, LEAD IN NO 4 1PAIR	METER	1458
ELECTRIC CABLE IN CONDUIT, SERVICE, NO. 6 2C	METER	38
TRAFFIC SIGNAL POST, GALVANIZED STEEL 4.85 METER	EACH	3
STEEL COMBINATION MAST ARM ASSEMBLY AND POLE, 7.92 METER	EACH	1
STEEL COMBINATION MAST ARM ASSEMBLY AND POLE, 9.75 METER	EACH	1
STEEL COMBINATION MAST ARM ASSEMBLY AND POLE, 10.36 METER	EACH	1
STEEL COMBINATION MAST ARM ASSEMBLY AND POLE, 13.41 METER	EACH	1
CONCRETE FOUNDATION, TYPE A	METER	3.6
CONCRETE FOUNDATION, TYPE D	METER	1.2
CONCRETE FOUNDATION, TYPE E 750 MM DIAMETER	METER	18.4
PREFORMED DETECTOR LOOP	METER	318
ELECTRIC CABLE IN CONDUIT, GROUNDING, NO. 6 1C	METER	182
ELECTRIC CABLE IN CONDUIT, NO. 20 3/C, TWISTED, SHIELDED	METER	104
TELEPHONE SERVICE INSTALLATION	L.SUM	0.5
SERVICE INSTALLATION, POLE MOUNT	EACH	1
SIGNAL HEAD, LED, 1-FACE, 3-SECTION, MAST ARM MOUNTED	EACH	5
SIGNAL HEAD, LED, 1-FACE, 5-SECTION, MAST ARM MOUNTED	EACH	7
SIGNAL HEAD, LED, 2-FACE, 5-SECTION, BRACKET MOUNTED	EACH	3
SIGNAL HEAD, LED, 2-FACE, 1-3 SECTION, 1-5 SECTION, BRACKET MOUNTED	EACH	1
PEDESTRIAN SIGNAL HEAD, LED, 1-FACE, BRACKET MOUNTED WITH COUNTDOWN TIMER	EACH	2
TEMPORARY TRAFFIC SIGNAL TIMING	EACH	1
UNINTERRUPTABLE POWER SUPPLY	EACH	1

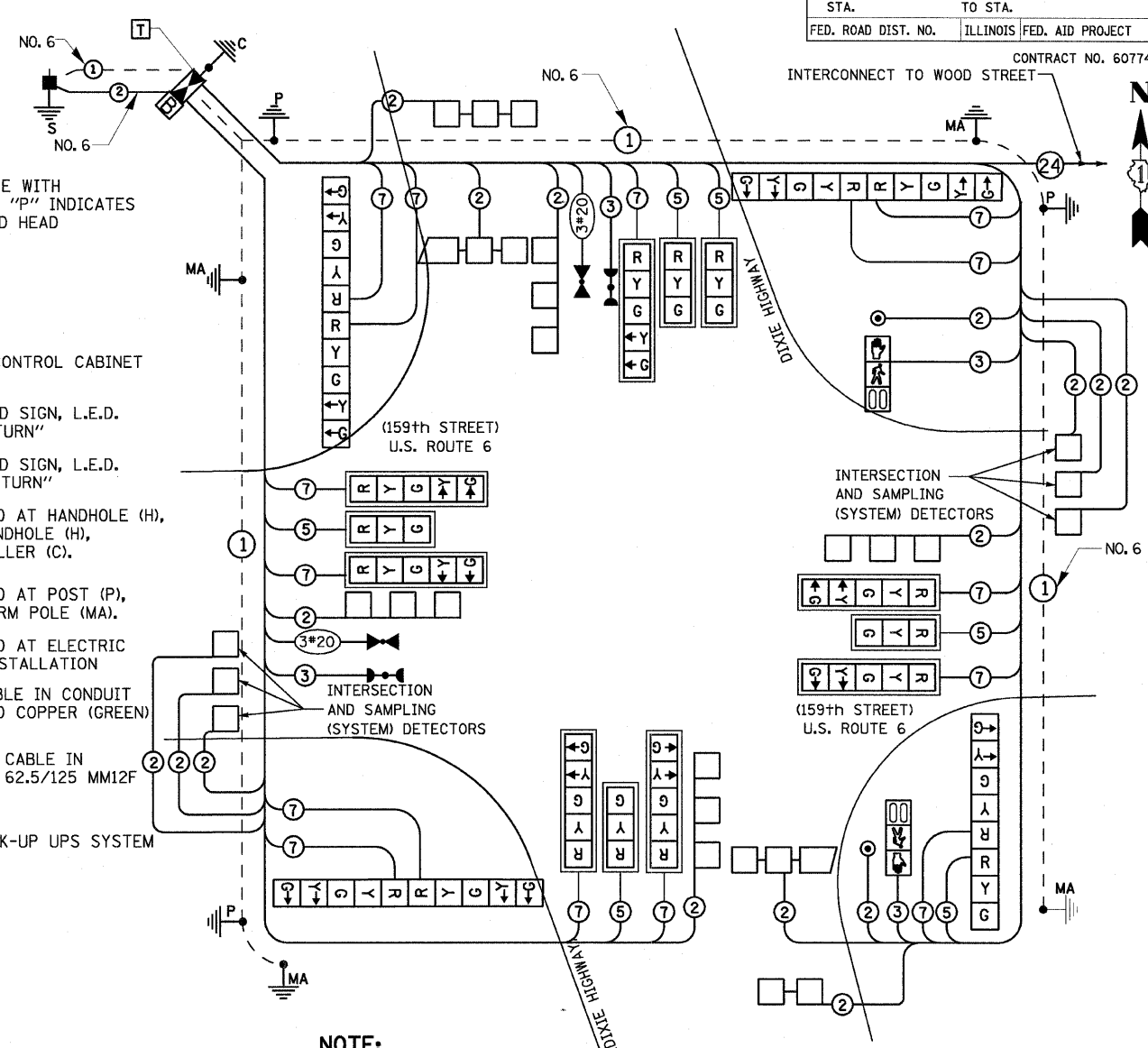
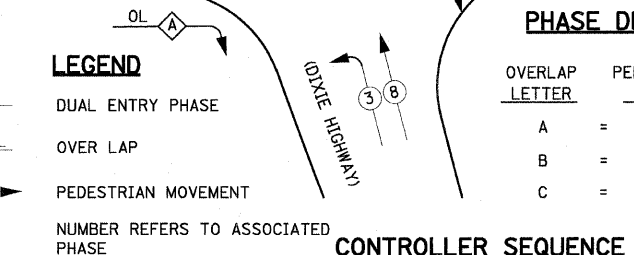
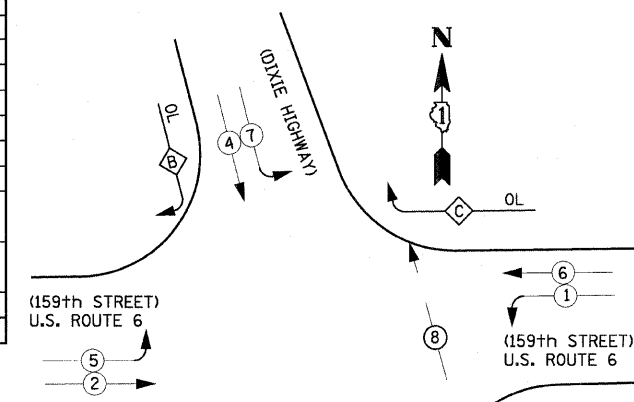
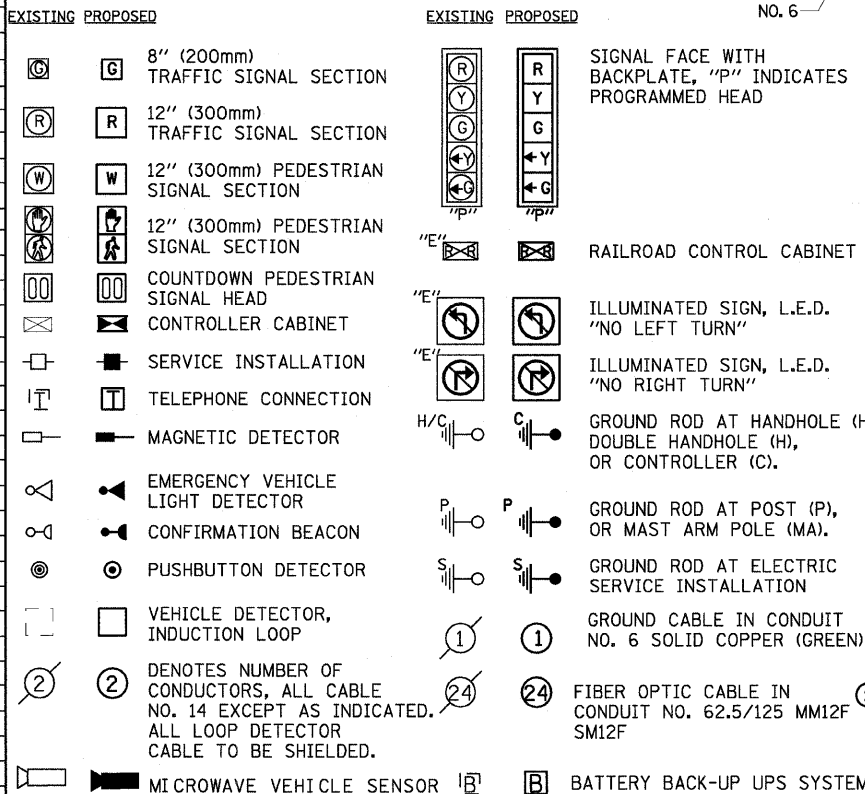
*50% cost to City of Harvey and 50% cost to City of Markham

I.D.O.T TRAFFIC SIGNAL INSTALLATION ELECTRICAL SERVICE REQUIREMENTS					TOTAL WATTAGE
TYPE	NO. LAMPS*	WATTAGE INCAND.	WATTAGE LED	*OPERATION	
SIGNAL (RED)	20	135	17	0.50	170.0
(YELLOW)	20	135	25	0.25	125.0
(GREEN)	20	135	15	0.25	75.0
ARROW	28	135	12	0.10	33.6
PED. SIGNAL	2	90	25	1.00	50.0
CONTROLLER	1	100	100	1.00	100.0
ILLUM. SIGN		84		0.05	

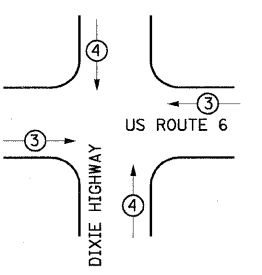
FOUNDATION (DEPTH)	FT. (m)	CABLE SLACK	FT. (m)	VERTICAL	FT. (m)
TYPE A - POST	4 (1.2)	HANDHOLE	6.5 (2.0)	ALL FOUNDATIONS	3.5 (1.0)
D - CONTROLLER	4 (1.2)	DOUBLE HANDHOLE	13 (4.0)	MAST ARM (L) POLE	20'-H-2-
E - M. ARM POLE		SIGNAL POST	2 (1.0)	(6m+L-0.6m)=	
	30" (750mm)	CONTROLLER CAB.	1 (0.5)	BRACKET MOUNTED	13 (4.0)
	36" (900mm)	FIBER OPTIC	13 (4.0)	PED. PUSHBUTTON	4 (1.2)
	36" (900mm)	ELECTRIC SERVICE	1 (0.5)	ELECTRIC SERVICE	13.5 (4.1)
	36" (900mm)	GROUND CABLE	1 (0.5)	SERVICE TO GROUND	13.5 (4.1)
				POST MOUNTED	6 (1.8)

ENERGY COSTS TO: TOTAL = 553.600
ILLINOIS DEPARTMENT OF TRANSPORTATION
201 WEST CENTER COURT
SCHAMBURG, ILLINOIS 60196-1096
CONTACT: MIKE LYNCH
PHONE: (847) 816-5331
COMPANY: COM. EDISON

CABLE PLAN LEGEND



PROPOSED EMERGENCY VEHICLE PREEMPTOR		
VEHICLE EMERGENCY PREEMPTOR	3	4
MOVEMENT	← →	↑ ↓



F.A. RTE.	SECTION	COUNTY	TOTAL SHEETS	SHEET NO.
351	3277R	COOK	541	304
STA. TO STA.		ILLINOIS FED. AID PROJECT		

CONTRACT NO. 60774

THE TRAFFIC SIGNAL CONTROL EQUIPMENT FOR THIS PROJECT SHALL BE "EAGLE" TO MATCH THE EXISTING ADJACENT SYSTEM.

REVISIONS	
NAME	DATE

ILLINOIS DEPARTMENT OF TRANSPORTATION
US RTE 6 FROM I-294 TO IL RTE 1
SCHEDULE OF QUANTITIES
AND CABLE PLAN
US RTE 6 & DIXIE HIGHWAY
SCALE: NONE
DATE 01/28/09
DRAWN BY DK
CHECKED BY JA

Delta Engineering, Inc.
CONSULTING ENGINEERS, CHICAGO, ILLINOIS.