

SCHEDULE OF QUANTITIES

PAY ITEM	UNIT	QTY.
HANDHOLE	EACH	5
HEAVY-DUTY HANDHOLE	EACH	2
DOUBLE HANDHOLE	EACH	1
FULL-ACTUATED CONTROLLER AND TYPE IV CABINET	EACH	1
TRANSCIVER-FIBER OPTIC	EACH	1
TRAFFIC SIGNAL BACKPLATE	EACH	10
INDUCTIVE LOOP DETECTOR	EACH	8
*LIGHT DETECTOR	EACH	2
*LIGHT DETECTOR AMPLIFIER	EACH	1
PEDESTRIAN PUSH-BUTTON	EACH	4
TEMPORARY TRAFFIC SIGNAL INSTALLATION	EACH	1
REMOVE EXISTING TRAFFIC SIGNAL EQUIPMENT	EACH	1
REMOVE EXISTING HANDHOLE	EACH	4
REMOVE EXISTING CONCRETE FOUNDATION	EACH	8
SIGN PANEL - TYPE 1	SQ M	1.4
SIGN PANEL - TYPE 2	SQ M	2.1
CONDUIT IN TRENCH, 50MM DIA., GALVANIZED STEEL	METER	163
CONDUIT IN TRENCH, 65MM DIA., GALVANIZED STEEL	METER	11
CONDUIT IN TRENCH, 100MM DIA., GALVANIZED STEEL	METER	3
CONDUIT PUSHED, 50MM DIA., GALVANIZED STEEL	METER	11
CONDUIT PUSHED, 100MM DIA., GALVANIZED STEEL	METER	74
TRENCH AND BACKFILL FOR ELECTRICAL WORK	METER	177
ELECTRIC CABLE IN CONDUIT, SIGNAL NO. 14 2C	METER	157
ELECTRIC CABLE IN CONDUIT, SIGNAL NO. 14 3C	METER	337
ELECTRIC CABLE IN CONDUIT, SIGNAL NO. 14 5C	METER	507
ELECTRIC CABLE IN CONDUIT, SIGNAL NO. 14 7C	METER	198
ELECTRIC CABLE IN CONDUIT, LEAD-IN, NO 4 1 PAIR	METER	708
ELECTRIC CABLE IN CONDUIT, SERVICE, NO. 6 2C	METER	21
STEEL COMBINATION MAST ARM ASSEMBLY AND POLE 9.75 METER	EACH	3
STEEL COMBINATION MAST ARM ASSEMBLY AND POLE 11.58 METER	EACH	1
CONCRETE FOUNDATION, TYPE D	METER	1.2
CONCRETE FOUNDATION, TYPE E 750 MM DIAMETER	METER	18.4
ELECTRIC CABLE IN CONDUIT, GROUNDING, NO. 6 1C	METER	159
ELECTRIC CABLE IN CONDUIT, NO. 20 3/C, TWISTED, SHIELDED	METER	77
PREFORMED DETECTOR LOOP	METER	113
SERVICE INSTALLATION, POLE MOUNT	EACH	1
SIGNAL HEAD, LED, 1-FACE, 3-SECTION, MAST ARM MOUNTED	EACH	8
SIGNAL HEAD, LED, 1-FACE, 3-SECTION, BRACKET MOUNTED	EACH	2
SIGNAL HEAD, LED, 1-FACE, 5-SECTION, BRACKET MOUNTED	EACH	2
SIGNAL HEAD, LED, 1-FACE, 5-SECTION, MAST ARM MOUNTED	EACH	2
PEDESTRIAN SIGNAL HEAD, LED, 2-FACE BRACKET MOUNTED WITH COUNTDOWN TIMER	EACH	4
TEMPORARY TRAFFIC SIGNAL TIMING	EACH	1
UNINTERRUPTABLE POWER SUPPLY	EACH	1

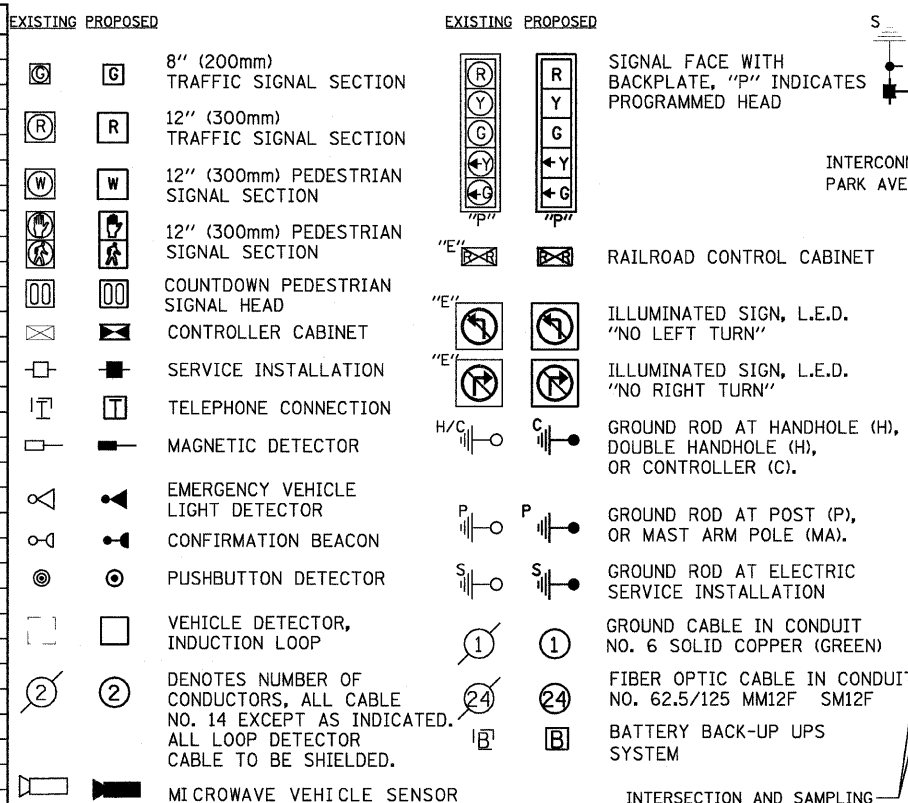
* 100% cost to City of Harvey

I.D.O.T. TRAFFIC SIGNAL INSTALLATION ELECTRICAL SERVICE REQUIREMENTS					TOTAL WATTAGE
TYPE	NO. LAMPS*	WATTAGE INCAND.	WATTAGE LED	% OPERATION	
SIGNAL (RED)	14	135	17	0.50	119.0
SIGNAL (YELLOW)	14	135	25	0.25	87.5
SIGNAL (GREEN)	14	135	15	0.25	52.5
ARROW	8	135	12	0.10	9.6
PED. SIGNAL	8	90	25	1.00	200.0
CONTROLLER	1	100	100	1.00	100.0
ILLUM. SIGN		84		0.05	

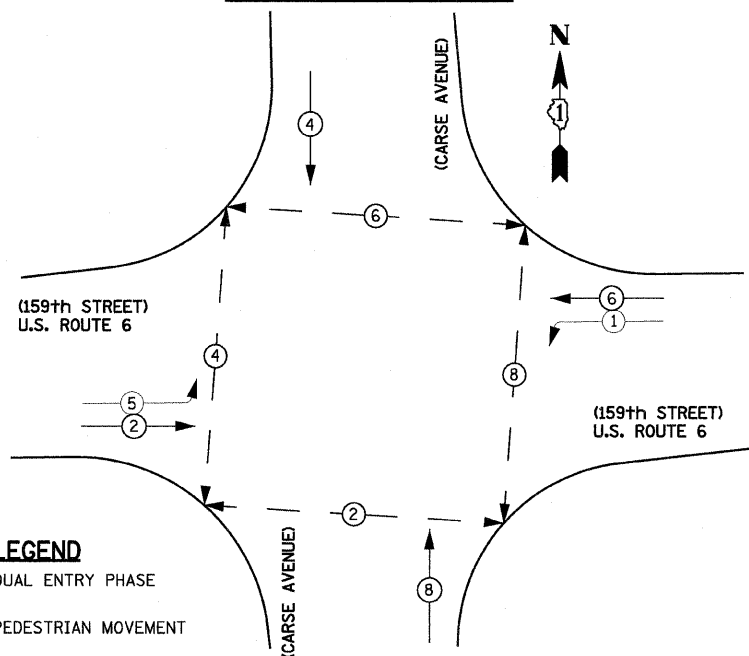
FOUNDATION (DEPTH)	FT. (m)	CABLE SLACK	FT. (m)	VERTICAL	FT. (m)
TYPE A - POST	4 (1.2)	HANDHOLE	6.5 (2.0)	ALL FOUNDATIONS	3.5 (1.0)
D - CONTROLLER	4 (1.2)	DOUBLE HANDHOLE	13 (4.0)	MAST ARM (L) POLE	20'-H-2= (6m+L-0.6m)
E - M. ARM POLE		SIGNAL POST	2 (0.6)	BRACKET MOUNTED	13 (4.0)
	30" (750mm)	CONTROLLER CAB.	1 (0.3)	PEDESTRIAN PUSHBUTTON	4 (1.2)
	36" (900mm)	FIBER OPTIC	13 (4.0)	ELECTRIC SERVICE	13.5 (4.1)
	36" (900mm)	ELECTRIC SERVICE	1 (0.3)	SERVICE TO GROUND	13.5 (4.1)
	36" (900mm)	GROUND CABLE	1 (0.3)	POST MOUNTED	6 (1.8)

ENERGY COSTS TO: TOTAL = 568.60
 ILLINOIS DEPARTMENT OF TRANSPORTATION
 201 WEST CENTER COURT
 SCHUMBERG, ILLINOIS 60196-1096
 ENERGY SUPPLY CONTACT: MIKE LYNCH
 PHONE: (847) 816-5331
 COMPANY: COM. EDISON

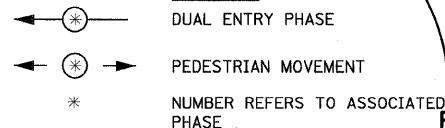
CABLE PLAN LEGEND



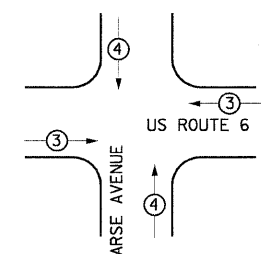
CONTROLLER SEQUENCE



LEGEND

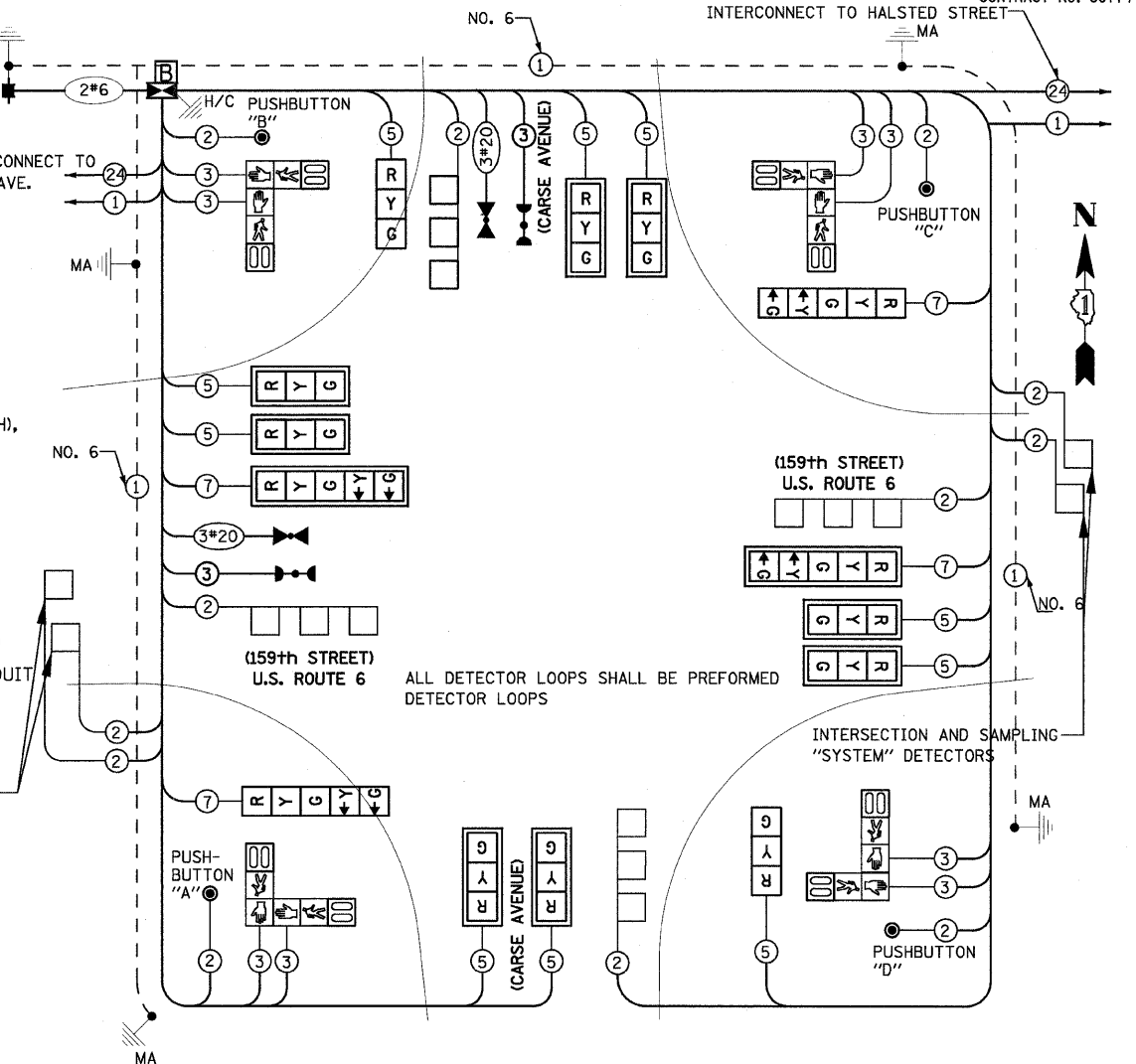


PHASE DESIGNATION DIAGRAM



NOTE:
 THE TRAFFIC SIGNAL CONTROLLER EQUIPMENT FOR THIS PROJECT SHALL BE "ECONOLITE" TO MATCH THE EXISTING ADJACENT SYSTEM.

PROPOSED EMERGENCY VEHICLE PREEMPTOR		
VEHICLE EMERGENCY PREEMPTOR	3	4
MOVEMENT	← →	↑ ↓



NOTE:

PUSHBUTTON "A" SHALL PLACE A CALL IN PHASES 2 AND 4
 PUSHBUTTON "B" SHALL PLACE A CALL IN PHASES 4 AND 6
 PUSHBUTTON "C" SHALL PLACE A CALL IN PHASES 6 AND 8
 PUSHBUTTON "D" SHALL PLACE A CALL IN PHASES 2 AND 8

REVISIONS	
NAME	DATE

ILLINOIS DEPARTMENT OF TRANSPORTATION
 US RTE 6 FROM I-294 TO IL RTE 1
 SCHEDULE OF QUANTITIES
 AND CABLE PLAN
 US RTE 6 & CARSE AVENUE

SCALE: NONE
 DATE 01/28/09
 DRAWN BY DK
 CHECKED BY JA