

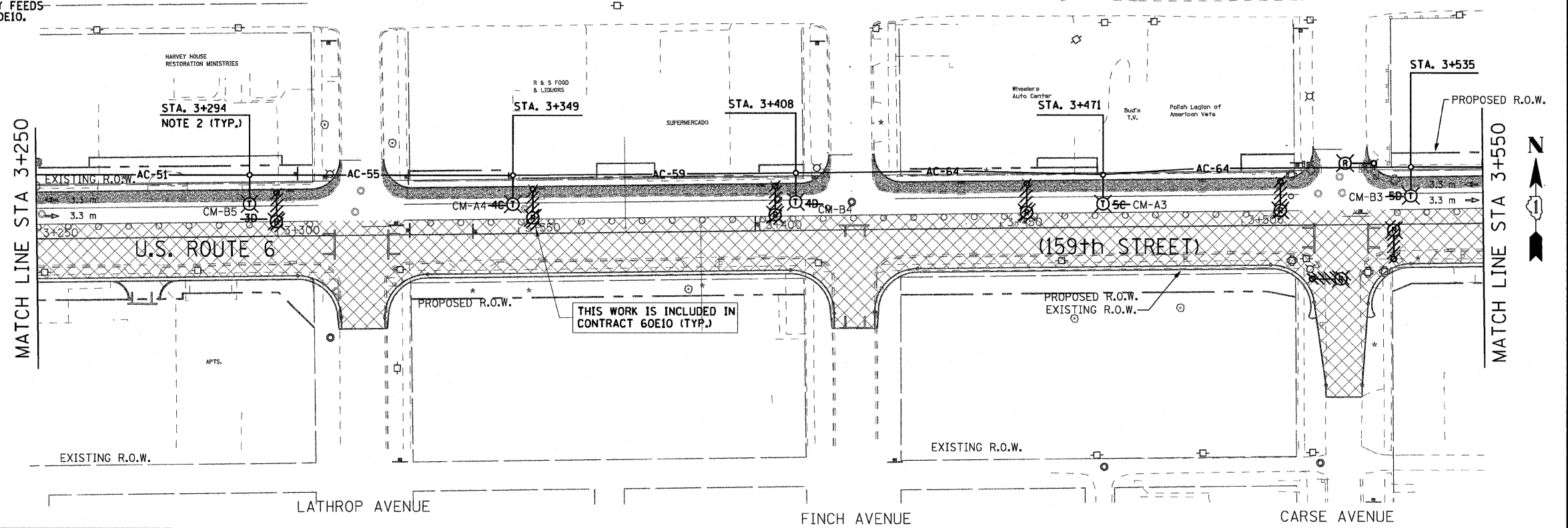
| F.A. RTE.           | SECTION | COUNTY        | TOTAL SHEETS | SHEET NO.        |
|---------------------|---------|---------------|--------------|------------------|
| 351                 | 3277R   | COOK          | 541          | 340              |
| STA. 3+250          |         | TO STA. 3+850 |              |                  |
| FED. ROAD DIST. NO. |         | ILLINOIS      |              | FED. AID PROJECT |
| CONTRACT NO. 60774  |         |               |              |                  |

**NOTES:**

- REFER TO LIGHTING NOTES ON DRAWING E-1.
- SETBACK FOR THE TEMPORARY POLES SHALL BE 1.82 M (6') MINIMUM FROM THE BACK OF THE CURB.
- CIRCUITS CM-A AND CM-B ARE TEMPORARY FEEDS FOR LIGHTING INSTALLED IN CONTRACT 60E10.

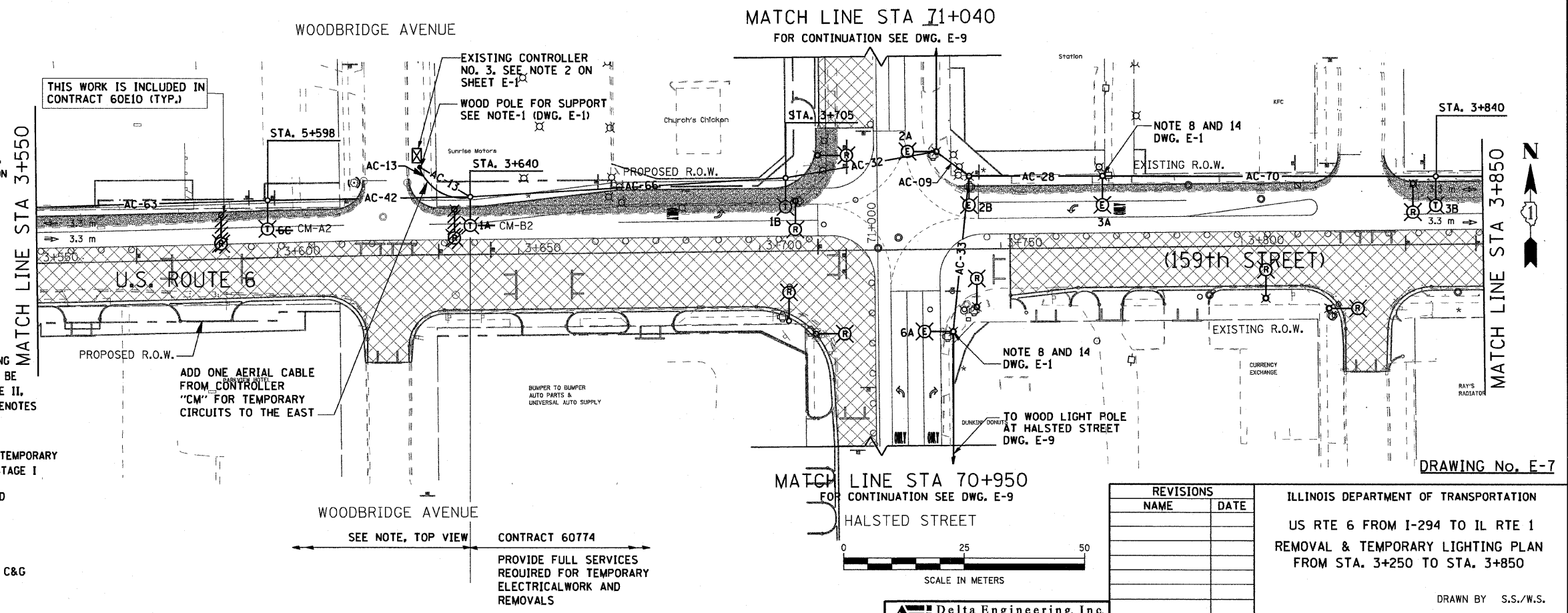
ALL LIGHTING SHOWN AS TEMPORARY PREVIOUSLY INSTALLED AS PART OF CONTRACT 60E10, AND BEING USED AS EXISTING LIGHTING IN THIS AREA.

THIS WORK SHALL BE REMOVED AS PART OF THIS CONTRACT (UPON COMPLETION OF NEW, PERMANENT LIGHTING SYSTEM).



**LEGEND**

- EXISTING LTG. POLE TO BE REMOVED
- EXISTING LTG. POLE TO REMAIN "AS IS" ON THE EXISTING CIRCUIT DURING CONSTRUCTION STAGE I ONLY. TO BE REMOVED DURING CONSTRUCTION STAGE II
- EXISTING PAVEMENT, SHOULDER CURB & GUTTER TO BE REMOVED BY OTHERS
- TEMPORARY AERIAL CABLE 3-1/2" NO. 2 ALUMINUM WITH STEEL MESSENGER WIRE XX-INDICATES LENGTH IN METERS
- LIGHT POLE, WOOD, WITH 4.5M MAST ARM AND 400W HPS LUMINAIRES DURING CONSTRUCTION STAGE I ONLY AND TO BE REMOVED DURING CONSTRUCTION STAGE II. SEE NOTE-6 ON SHEET E-1. LETTER DENOTES CIRCUIT IN EXISTING CONTROLLER.
- LIGHT POLE, WOOD, FOR SUPPORT OF TEMPORARY AERIALCABLE DURING CONSTRUCTION STAGE I
- EXISTING CONTROLLER TO BE REMOVED AT COMPLETION OF PROJECT
- CONSTRUCTION STAGE I.
- TEMPORARY PAVEMENT WITH TEMP. C&G



| REVISIONS |      |
|-----------|------|
| NAME      | DATE |
|           |      |
|           |      |
|           |      |
|           |      |

ILLINOIS DEPARTMENT OF TRANSPORTATION  
 US RTE 6 FROM I-294 TO IL RTE 1  
 REMOVAL & TEMPORARY LIGHTING PLAN  
 FROM STA. 3+250 TO STA. 3+850

DRAWN BY S.S./W.S.  
 CHECKED BY C.K./H.S.  
 DATE 01/28/09

**Delta Engineering, Inc.**  
 CONSULTING ENGINEERS, CHICAGO, ILLINOIS

CONTRACT 60774  
 PROVIDE FULL SERVICES  
 REQUIRED FOR TEMPORARY  
 ELECTRICALWORK AND  
 REMOVALS

DRAWING No. E-7